



# METAL ROOFING MAGAZINE

# 19TH ANNUAL METAL OF HONOR AWARDS

SEE PAGE 49

**MWI**  
COMPONENTS

SEE PAGE 48

**MRS**  
METAL ROLLFORMING SYSTEMS

SEE PAGE 20

**SHARKSKIN**  
The Ultimate Roof Underlayment

SEE PAGE 41

**THE BRADBURY GROUP**

SEE PAGE 47

**LOGAN**  
STAMPINGS

SEE PAGE 18

**Hershey's**  
METAL  
MEISTER LLC

Varibend

SEE PAGE 26

**mfm**  
BUILDING PRODUCTS CORP.

SEE PAGE 34

**SWI**  
MACHINERY

SEE PAGE 52

**TFC**  
TRIANGLE FASTENER  
CORPORATION

SEE PAGE 37

**AppliCad**

# SHOWTIME

Punch Your Tickets To Our Next Events!

FROM THE PUBLISHER'S OF ROLLFORMING MAGAZINE



**2023**  
**Rollforming** Construction Show

**SEPTEMBER 27-28, 2023**  
Duke Energy Center, Cincinnati, OH  
[constructionrollformingshow.com](http://constructionrollformingshow.com)

ADMIT 1

FROM THE PUBLISHER'S OF GARAGE, SHED & CARPORT MAGAZINE



**2024**  
GARAGE • SHED • CARPORT  
**BUILDER** SHOW

**JANUARY 24-25, 2024**  
Knoxville Convention Center, Knoxville, TN  
[garageshedcarportshow.com](http://garageshedcarportshow.com)

ADMIT 1

FROM THE PUBLISHER'S OF FRAME BUILDING NEWS



**2024**  
**POST-FRAME** BUILDER SHOW

**JUNE 19-20, 2024**  
Branson Convention Center, Branson, MO  
[postframebuildershow.com](http://postframebuildershow.com)

ADMIT 1

For More Information Contact Gary Reichert:  
[gary@shieldwallmedia.com](mailto:gary@shieldwallmedia.com) • PH 715-252-6360



# New Trade Show Destination in 2024

I have owned Shield Wall Media for almost four years now. It has been an adventure for me and the wonderful people who have chosen to come along for the ride. Like any endeavor, owning a company has its good days and its bad days. Today is a good day.

First, I can officially welcome a new passenger riding on the Shield Wall bus. Rocky Landsverk is now the editor of Rural Builder Magazine. He has more experience in publishing than I do, and is a great addition to our team.

Seeing new ideas progress from an idea or a sentence to reality feels like magic. The trip from “Hmmm, I wonder ...” to “Wow, look at that!” is where the fun is. Some places are known as destinations for fun; one of those is Branson, Missouri.

One tiny piece of fun and magic is now officially added to Branson. We officially launched the Post-Frame Builder Show

## POST-FRAME BUILDER SHOW

on the Building Wins Live podcast February 15. [<https://bit.ly/BldgWins>] The Post-Frame Builder Show will be in Branson on June 19-20, 2024.

In the last four years we have added Pro Tips On consumer books, trade shows, and new magazines. We could not have gotten here without your faith and support. Thank you to all of our subscribers, exhibitors, and advertisers for your confidence in our growing team and our mix of magazines, books, and shows. **MR**

## EDITOR'S LOG

By Karen Knapstein, Managing Editor

# Congratulations to All 2023 Metal of Honor Winners

As I write this, advertising director Missy Beyer and I have just returned to the office after attending the International Roofing Expo in Dallas. It was an excellent trip. Events that allow you to meet and learn directly from roofing industry manufacturers, suppliers, and so many others are few and far between.

IRE is enormous. With over 400 booths and displays at the 2023 event, we were only able to meet with a tiny fraction of the exhibitors. We did, however, make it a priority to meet with and deliver the remaining Metal of Honor plaques.

It was our honor to hand-deliver the award plaques to those winning companies that were exhibiting at IRE. (Some of the awards were delivered last month during Frame Building Expo in Louisville.) We took the opportunity to take photos of the winners with their awards; you will see them in an upcoming edition of Metal Roofing Magazine. (You'll also see and learn



more about the show in the next edition.)

The Metal of Honor is a big deal. It's an Industry's Choice award. All the winners were selected by you and your fellow roofing industry professionals.

If your favorite suppliers didn't show up on the winner's list, be sure to vote for them in December when the next voting cycle begins. If they are not on the ballot, you are free to nominate them by writing in their company name.

The next edition is the annual IDEA Book. Once again it will be filled with outstanding metal roofing projects. If ever you're thinking to yourself: "I can do better than that!" as you peruse the metal roofing Project of the Month or the IDEA Book projects, this is a standing invitation for you to send in a project. All we need is a component list, high resolution photos, and the project story. (Submit your project here: [bit.ly/IDEAbk23](https://bit.ly/IDEAbk23).) **MR**



71



# CONTENTS

## FEATURES



72



**7: Metal of Honor**  
47 Companies Recognized by Roofing Industry in 2023

**56: Product Feature**  
Colors of the Year 2023

**59: 2003: Metal Roofing Flashback**  
Metal and Photovoltaics

**71: MRA Update**  
Cornett Roofing, Modern Metal Recognized For Best Residential Roof

**75: Construction Survey Insights**  
Your Metal Roofing Peers — By the Numbers



## DEPARTMENTS

- 3 Publisher's Note
- 3 Editor's Note
- 54 New Products
- 65 Business Connections
- 68 News
- 72 Project of the Month
- 74 Products & Services

**GO TO PAGE 6 TO  
SUBSCRIBE  
TO MORE  
FREE MAGAZINES**

## MAY PREVIEW

- Metal Roofing Magazine
- IDEA Book:  
Outstanding Metal Roofs



### ON THE COVER:

Take a closer look at the Metal of Honor winning companies in this edition.

COVER DESIGN BY KEVIN ULRICH & TOM NELSEN.  
MWI COMPONENTS PHOTO COURTESY OF GREINER BUILDINGS, INC.

## INDEX OF ADVERTISERS

Company	Page #
AceClamp	61
Acu-Form	36, 66
AkzoNobel Coatings Inc.	8, 9
AppliCad Software	FC, 37
ASC Machine Tools Inc.	38, 66
Atlas Building Products	39
Aztec Washer Company	40, 66
Bradbury Group, The	FC, 41, 67
Deliverance Powered Safety Hammers LLC	67
Direct Metals Inc.	42, 66
Drexel Metals - Carlisle Construction Group	10, 11
DripStop Condensation Control	12, 13
Dynamic Fastener	14, 15
East Coast Fasteners	43
EPDM Coatings	58
Everlast Metals	16, 17, 65
Golden Rule Fasteners	66
Grabber Post Buildings, Inc.	44
Hershey's Metal Meister	FC, 18, 19, 65
Hixwood	45
I Beam Sliding Doors	65
Indiana Warm Floors	66
Kevmar Manufacturing	65
Kirsch Building Products - Sharkskin	FC, 20, 21
Levi's Building Components	46, 66
Logan Stampings	FC, 47
Malco Products	22, 23
Marion Manufacturing	65
Maze Nails	24, 25
Metal Exteriors	67
Metal Rollforming Systems	FC, 48
MFM Building Products	FC, 26, 27
Mid South Aluminum	BC
MWI Components	FC, 49
Onduline / Tuftex	28, 29
Petersen / PAC-CLAD	30, 31
Planet Saver Industries	65
Plyco Corporation	66
ProVia	32, 33
Raytec Manufacturing	53
RetroFitClip	67
rFOIL Reflective Insulation - Covertech	50
Roll Former LLC	63
S-51	51
Safe-Way Garage Doors	67
SmartBuild Systems	65
SWI Machinery	FC, 34, 35
Triangle Fastener	FC, 52
United Steel Supply	65

## YOUR PRIVACY IS IMPORTANT TO US

Unrelated third parties often attempt to sell mailing lists for what they say are our publications. You can be assured that WE DO NOT, HAVE NOT, AND WILL NOT EVER SELL OUR SUBSCRIBER LISTS. We will also NOT sell the attendee or exhibitor lists from our shows. We do provide attendee lists to the exhibitors free of charge and as a courtesy for their support, but we NEVER provide this or any other information to independent vendors.

**Gary Reichert,**  
Publisher, Shield Wall Media

# METAL ROOFING

MAGAZINE

### Managing Editor

Karen Knapstein  
karen@shieldwallmedia.com  
715-513-6767

### Editorial Staff

Linda Schmid, Marcus Josiger,  
Rocky Landsverk

### Circulation/Subscriptions

Barb Prill  
barb@shieldwallmedia.com  
920-471-4846

### Publisher

Gary Reichert  
gary@shieldwallmedia.com  
715-252-6360

### Director of Sales

Missy Beyer  
missy@shieldwallmedia.com  
920-216-3007

### Executive/Advertising Assistant

Kathy Budsberg  
kathy@shieldwallmedia.com

### Graphic Designers

Tom Nelsen, Kevin Ulrich

Metal Roofing Magazine (ISSN: 1533-8711) (Volume 22, Issue 2) is published seven times per year (March, April, May, July, September, November and December) by Shield Wall Media LLC, 150 Depot St, Iola, WI 54945. Periodical postage paid at Iola, WI, and at additional mailing offices. Canadian Agreement Number: 40665675. POSTMASTER: Send address changes to Metal Roofing Magazine, Barb Prill, PO BOX 255, Iola, WI 54945. Copyright 2023 Shield Wall Media LLC. Metal Roofing Magazine and its logo are registered trademarks. Other names and logos referred to or displayed in editorial or advertising content may be trademarked or copyright. Metal Roofing Magazine assumes no responsibility for unsolicited materials sent to it. Publisher and advertisers are not liable for typographical errors that may appear in prices or descriptions in advertisements. Mailed free to roofing contractors and their suppliers throughout North America. Others may subscribe: \$29.98 for 1 year, \$56.98 for 2 years, and \$80.98 for 3 years.

## ONLINE SERVICES:

- Subscribe FREE to Metal Roofing Magazine
- Archived Stories
- Subscribe to Construction Express e-newsletter



CHECK OUT OUR WEBSITE @  
[www.readmetalroofing.com](http://www.readmetalroofing.com)

E-MAIL THE EDITOR AT  
karen@shieldwallmedia.com





# SUBSCRIBE NOW!

Shield Wall Media brands are dedicated to serving the information needs of construction professionals.



**SUBSCRIBE ONLINE:** shieldwallmedia.com/subscribe or fill out & mail form below.



## FREE 3-YEAR SUBSCRIPTIONS!

1. Please check one or more boxes, sign & date:

I wish to receive:  Metal Roofing  Garage, Shed & Carport Builder  Metal Builder  
 Rural Builder  Frame Building News  Rollforming  Roofing Elements

Signature (REQUIRED): \_\_\_\_\_ Date: \_\_\_\_\_

Print Name: \_\_\_\_\_

Company: \_\_\_\_\_

Address: \_\_\_\_\_

City/State/Zip: \_\_\_\_\_

Phone or Email (REQUIRED): \_\_\_\_\_

Check this box if you wish to receive the email newsletter associated with the magazine subscription(s) above.

I would like to receive my subscription:  
 By Mail  
 Digitally

SWM2023

2. Choose which title applies:  
 President/Vice President  
 Principle/Shareholder  
 Sales Manager or Rep  
 Foreman/Crew Manager  
 Engineer/Architect  
 Other: \_\_\_\_\_

3. Describe your business:  
 Builder/Contractor  
 Dealer/Distributor  
 Manufacturer  
 Engineer/Architect  
 Other: \_\_\_\_\_

4. Please check all of the types of building or manufacturing you are involved with:

Post Frame  Residential  Metal Roofing  Rollforming  
 Metal Frame  Commercial  Trusses/Columns  Trim & Flashings  
 Fabric  Equine  Foundations  Insulation/  
 Agricultural  Roofing  Gutters/Snow Retention  Moisture Control



**MAIL TO:**  
 Shield Wall Media  
 ATTN: Barb Prill  
 PO Box 255, Iola, WI 54945





# WINNERS

**Congratulations to all of the 2023 Metal of Honor winners! The Metal of Honor awards were created to allow metal roofing installers an opportunity to honor those who help them most by providing quality products and excellent service.**

- AceClamp
- Acu-Form
- AkzoNobel Coatings
- AppliCad Software
- ASC Machine Tools
- Atlas Building Products
- Aztec Washer Company
- Bradbury Group, The
- Direct Metals Inc.
- Dripstop®
- Drexel Metals
- Dynamic Fastener
- East Coast Fasteners
- Englert
- Everlast Metals
- Garland Company, The
- Graber Post Buildings
- Hershey's the Metal Meister
- Hixwood
- Isaiah Industries
- Kirsch Building Products
- Leland Industries
- Levi's Building Components
- Logan Stampings
- Malco Products
- Maze Nails
- MBCI
- McElroy Metal
- Metal Rollforming Systems
- MFM Building Products
- MWI Components
- Onduline / Tuftex
- Petersen / PAC-CLAD
- ProVia
- rFOIL Insulation Products
- Ridgeline Safety Systems
- Roll Former LLC
- Roof Hugger
- S-5!
- Sherwin-Williams Coil Coatings
- SmartBuild Systems
- Snap-Z
- ST Fastening Systems
- SWI Machinery
- Triangle Fastener Corporation
- Titanium / Owens Corning
- Union Corrugating Company

---

These companies have been selected by the readers of *Metal Roofing Magazine* as a top supplier in the industry. You, the readers, nominated who you believe has the most:

- Quality products
  - Excellent service
  - Dependable delivery
  - Competitive prices
- 

*Many companies were nominated by our readers and the top percent of vote recipients—47 in all—make up the 19th class of honorees.  
Congratulations to all of the 2023 winners!*

# AkzoNobel

METAL OF HONOR AWARDS: 13 ■ WEBSITE: [coilcoatings.akzonobel.com/us](http://coilcoatings.akzonobel.com/us) ■ PHONE: 614-294-3361

## Ensure your metal roofing looks newer for longer!

The latest coatings from AkzoNobel combine powerful performance with excellent aesthetics.

The rising popularity of metal roofing in North America shows no sign of slowing down, fueled by growth in commercial, residential and industrial construction and renovation activity.

According to a recent Dodge Report, metal roofing accounts for 17% of the overall roofing market in 2021, up from 12% in 2019. The data shows that while the roofing market as a whole has grown, metal is getting an increasingly larger percentage of the total. And as consumer awareness of metal roofing increases, the percentage is expected to continue rising.

The growth in demand for metal roofing has been accompanied by a growing requirement for durable, weather-resistant coatings that can meet both the performance and aesthetic requirements of external applications. Architects, designers, and end-users are looking for coating technologies that enhance performance, strengthen reliability and provide excellent aesthetics, while also combining well with other colors in and around their buildings, so the roof looks as good in 10- or 20-years' time as it did when first built. They are also looking for more sustainable products, which is an increasingly important factor as industries look to reduce their carbon footprints.

At AkzoNobel, this is why we invest so much time and resources in our testing and weathering program. For decades, our metal coatings have been assessed at our weathering facilities in South Florida and other locations around the world. Our real-world exposure program is the largest in the industry, with over 40,000 panels in South Florida alone. Our test

panels are regularly reviewed to evaluate performance, increase our understanding and predict how they will perform across the fullest range of weather conditions.

Take CERAM-A-STAR® 1050, for example, the market-leading silicone-modified polyester (SMP) coating from AkzoNobel. CERAM-A-STAR 1050 has been protecting brands and



reputations since 2005 with the industry's strongest, most proven, durable and best performing SMP paint system.

The product was rigorously tested against other popular SMP products at our independently certified testing facility in Florida. CERAM-A-STAR 1050 was measured for color change and gloss retention after years of exposure, demonstrating exceptional product performance and best in class gloss and color retention, even when exposed to harsh elements like, UV, humidity, salt spray and driving rain.

Key results included:

- CERAM-A-STAR 1050 retained almost double the level of gloss retention compared to competitor products across all color options.
- For color fade, CERAM-A-STAR 1050 returned an average  $\Delta E$  color difference of 1.6. Competitor panels faded 1.5 times more than CERAM-A-STAR 1050.

• CERAM-A-STAR 1050 stays looking newer than any other SMP coil coating on the market.

This robust testing regime epitomizes AkzoNobel's commitment to adding value to customers through quality, service, and most importantly, protecting reputations as much as surfaces – being a trusted partner. Whatever product they use, customers and end-users can be confident that their projects will last for decades to come.

“AkzoNobel protects your brand and your reputation,” says Manoel Rodrigues, Regional Commercial Director, North America, Metal Coatings, AkzoNobel. “With expertise built up over 200 years, we go beyond performance with quality products designed to stand the test of time. As demonstrated with CERAM-A-STAR 1050, rigorous outdoor testing under the harshest weather conditions ensures that every coating we produce performs to a level that exceeds expectations.”

The product is supported by the CERAM-A-STAR 1050 Select standard color palette program, comprising 41 of the most popular coil industry colors.

The simple color selection process of CERAM-A-STAR 1050 Select reduces complexity and minimizes resources required, leading to an increase in operational efficiencies, improved availability and faster turnarounds on projects.

“As a trusted partner, we provide robust, long-lasting solutions for metal roofing and other coil and extrusion applications. Customers can rely on us to deliver an extensive portfolio of proven products coupled with excellent support when they need it,” says Manoel Rodrigues.

For more information on the durability and performance of AkzoNobel's coil coatings, contact your representative or visit the coil coatings website. **MOH**



# CERAM-A-STAR® 1050

## Proven Performance.

The strongest, most durable and best performing SMP coating technology.

- ↗ Protecting your brand and reputation since 2005
- ↗ Best in class gloss and color retention for long lasting performance

## Made Easy.

Now available in a standard color palette program. CERAM-A-STAR® 1050 Select makes color complexity a thing of the past.

- ↗ Reduced complexity to increase operational efficiencies
- ↗ Improved availability resulting in quicker turns on projects



Step up to  
proven performance  
that's made easy.



**AkzoNobel**

[coilcoatings.akzonobel.com/us/ceram-a-star](https://coilcoatings.akzonobel.com/us/ceram-a-star)

# Drexel Metals

METAL OF HONOR AWARDS: 17 ■ WEBSITE: [www.drexelmetals.com](http://www.drexelmetals.com) ■ PHONE: 888-321-9630

## Drexel Metals Lends a Hand and an ARM

Regional roll formers and metal roofing installers are good at what they do: manufacturing and installing long-lasting metal roofing. But even the best of the best need back-office support to keep projects running smoothly. That's why Drexel Metals created the Drexel Metals-Association of Regional Manufacturers (DM-ARM) program. Since 2011, Drexel Metals has assisted manufacturers and installers with critical details that make a metal roof roll forming business or installing operation successful. Far more than supplying premium products, the DM-ARM program provides local controls, efficiency and freight savings to installers and manufacturers.

Putting the program into practice, one such installer, RLS Metal Systems (RLS), saw the opportunity to alleviate ongoing sales disruptions with another supplier and expand into metal roof manufacturing. RLS partnered with Drexel Metals a decade ago and has since seen the following benefits: seamless transition into manufacturing, quality backed by industry-leading warranties and steady growth bolstered by high customer retention.



## Seamless Transition Into Manufacturing

Joining the DM-ARM program, RLS delved into manufacturing with lower overhead and startup costs than they would have had independently. In addition to supplying metals, Drexel Metals conducts warranty specification, system backing and systems testing to sideline substantial costs that RLS members would otherwise incur. With these aspects of the business taken care of, the transition into manufacturing was uncomplicated for the RLS team.

Now able to fabricate coil into metal roofing systems, RLS has increased their business capacities, boasting hundreds of thousands of square feet of aluminum and steel roofing sold and installed. They have also continued to provide their customers with ongoing support and service from Drexel Metals.



## Quality Assurance Backed By Industry-leading Warranties

RLS further gained access to a more stable supply of premium materials and time-tested roofing systems —enjoying on-time delivery even for urgent needs. These systems are also backed by Drexel Metals' full array of warranties, including the 35-Year Gold Standard Warranty that covers the entire metal roofing system deck and is transferable from owner to owner during the course of the warranty.

In addition to strong warranties that cover labor, adhesion, chalking and fading, RLS can now depend on the Drexel Metals inspection team to ensure quality installation. This allows RLS to back their work with Weather Tightness Warranties to provide peace of mind from the seams to eaves. Starting with high caliber materials installed with superior tools and backed by leading warranties, RLS can make their contractors' lives easier and deliver excellent results to their customers.

## Customer Retention and Steady Growth

A testament to Drexel Metals' ability to keep the supply chain moving even in difficult times, RLS has experienced a high customer retention rate since joining DM-ARM. Similarly, the team saw a steady growth of 50 – 60 percent annually (pre-pandemic) and has achieved a 30-40 percent growth rate during the ongoing pandemic.

While RLS has always been a first-rate roofing installer, their partnership with Drexel Metals has increased their business capacities, making it possible for them to quickly fabricate quality metal roofing systems.

## Get a Hand By Becoming a DM-ARM

RLS is just one of the more than 60 Authorized Fabricators throughout the U.S. benefitting from the DM-ARM program. Although headquartered in Louisville, Kentucky, Drexel Metals has expanded across the country, allowing more opportunities to join the DM-ARM program.

For more information, call 888.321.9630 or visit [www.drexelmetals.com](http://www.drexelmetals.com). **MOH**





# THANK YOU!

FOR HELPING DREXEL METALS WIN THE  
METAL OF HONOR AWARD 17 YEARS IN A ROW!

Year after year, we stand by our commitment to support the growth of installers, manufacturers and fabricators. With metal roofing on-demand, we offer better local control, greater profits, larger freight savings and less scrap.

As a back-office partner, we allow our certified installers more time in the local market, which gives them an advantage over the competition. As a recognized industry leader, we will continue to set the bar in the roofing industry by equipping our valued partners with the best products backed by the best service.

1234 Gardiner Lane | Louisville, KY 40213  
drexelmetals.com | Toll Free: 888-321-9630 | Fax: 877-321-9638

**DrexelMetals**   
Roofing Systems + Custom Fabrication  
A **CARLISLE** COMPANY

# Dripstop®

METAL OF HONOR AWARDS: 3 ■ WEBSITE: [www.dripstop.net](http://www.dripstop.net) ■ PHONE: 937-660-6646

As a builder or building owner, you may have received a call that began with: **“It’s raining inside my building!”**

It’s probably condensation. Once the building is up, the remedies are fewer, less effective, and more expensive. *The key is to install panels with a condensation control membrane like Dripstop® during construction.*

The reason you might not think about condensation until it is too late is... *You can’t see, touch, or feel it, until it’s already a problem.* Understanding what causes condensation and the solutions can be confusing.

However, builders who educate their customers about condensation before starting the job can avoid angry phone calls and problems after the build.

It is a simple scientific fact that just as a glass of ice water sweats on a hot day, bare metal roofing sweats under similar conditions. When warm, wet air meets a cold surface, condensation forms water droplets.

In most parts of the country, dripping is almost unavoidable due to seasonal climate changes. There are two different ways builders have typically combatted moisture inside metal buildings. Historically, a layer of insulation has been used to minimize the change in temperature—this helps stop humidity from forming water droplets. More recently, builders have found a new, more efficient way to “control” condensation using a felt membrane to “catch” the moisture as it forms overnight, then “release it” as the sun and air move across the metal roofing panels during the day. Dripstop® is the world’s most trusted and used condensation control membrane.



When insulation is installed to specifications, it can be an effective solution. A condensation control membrane like Dripstop® offers numerous advantages for both the builders and building owners. As the building is erected, Dripstop® arrives already installed on the metal panels. Therefore, there is no time spent installing insulation. This increases job site safety for the builder by eliminating blind steps to purlins covered with insulation. It also saves labor typically spent tacking that insulation down and taping the seams. Since no insulation is being used, windy days become much less of a challenge.

Our membrane will not require cleaning or maintenance. Birds will not peck holes in it and it will not sag or fall off. Dripstop® is virtually worry-free.

Most condensation control membranes like Dripstop® offer noise reduction to cut down on both impact noise and echoes from inside the building.

Dripstop®’s specially designed adhesive barrier also helps protect the steel from corrosion. Dripstop® on a properly installed and vented metal roof will perform exceptionally 20-plus years down the road!

## Ventilation

There are many potential sources of moisture in a metal building:

- Fill dirt/gravel
- Concrete
- Livestock
- Poor drainage
- High ground water table
- Use of heaters, propane, kerosene, etc.
- Snow melt from vehicles, or moisture from washing vehicles
- Washing down floor areas
- Storage of firewood, green lumber, or fresh-cut timber
- Hay storage or other farm commodities

Whatever condensation control option you choose, ensure proper ventilation.

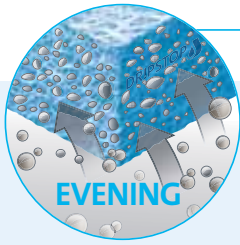
We want to thank our partners and customers for their continued trust and service. Dripstop® has served our customers for over 25 years and we look forward to serving for another 25.

**MOH**





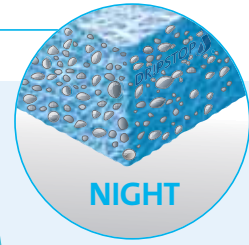
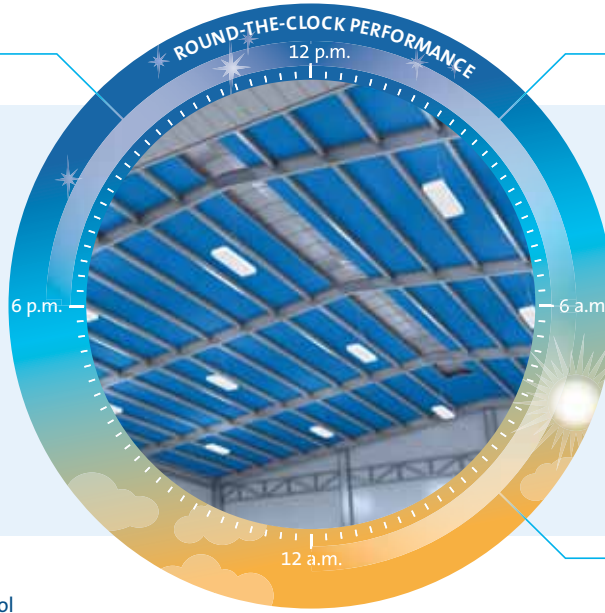
# Condensation control which Increase Profits not Labor Costs



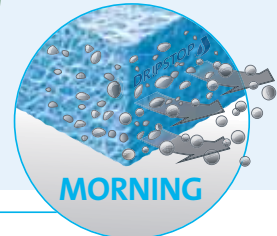
**EVENING**  
Water vapor is absorbed into the fibers



Effective condensation control requires good building ventilation



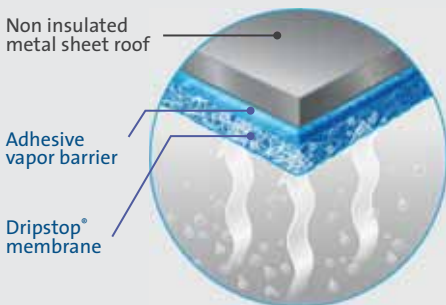
**NIGHT**  
Moisture is trapped in the fibers



**MORNING**  
Water evaporates through the roof opening

## A Necessity for Any Metal Roofed Building That is Not Climate Controlled.

- Post Frame/agricultural buildings
- Workshops/unattached garages
- Steel buildings
- Open-walled structures
- Self-storage
- Carports, truck ports & RV storage



## Better Science Equals Drier Buildings

When condensation occurs, moisture gets stored in the specially designed pockets of the Dripstop® membrane.

- Helps fight corrosion in livestock confinement
- Arrives on-site already on roof panels
- Cuts construction time in half
- Saves money



Get more information

Fight Condensation Without Insulation

Ask for it from your preferred steel panel supplier

Write to us [info@dripstop.com](mailto:info@dripstop.com) or call us at: 1-(937) 660-6646

# Dynamic Fastener

METAL OF HONOR AWARDS: 14 ■ WEBSITE: [www.dynamicfastener.com](http://www.dynamicfastener.com) ■ PHONE: 800-821-5448

**What is the definition of long life?** The answer would vary greatly depending upon the subject. For instance, the life expectancy of an African elephant on the Serengeti would be substantially different than that of a mosquito on your forearm.

Unfortunately for the metal roofer, the same nebulous and misleading signals are sent when some of Dynamic Fastener's competitors claim their fasteners have a long life coating. Once again, "long life" is just a relative phrase.

To eliminate unnecessary concerns on behalf of its valued customers, Dynamic Fastener quantifies the meaning of "long life." Since Dyna-Coat premium coating passes the 1,000-hour salt spray test, the company proudly proclaims "1,000 Hour" right next to the word Dyna-Coat. Rarely, if ever, does Dynamic Fastener see its competitors touting the tests that their screws pass. That is a suspicious omission.

To paraphrase the famous commercial, "What's on your fastener?" Removing the uncertainty on this very important topic is easy. Specify Dyna-Coat 1,000-hour salt spray premium coating on all screw requirements.

Dyna-Coat is a premium organic polymer coating designed to provide corrosion resistance for metal fasteners. Fasteners coated with Dyna-Coat exhibit excellent resistance to marring, chipping, and abrasion. The color of the coated fastener is metallic silver. Dyna-Coat employs several forms of corrosion resistance, such as replacement, inhibition, envelopment, and electrochemistry. These coated fasteners also have a strong resistance against acid and alkaline chemicals.

## Service

Dynamic Fastener is proud to have been chosen to receive the 2023 Metal of Honor Award by the readers of *Metal Roofing Magazine*. That devotion from readers is not an accident.

The company's success rests on its dedication to service, evident in the following areas:

- Standard orders received by 4 p.m. CST will ship that day more than 99% of the time.
- Dynamic Fastener's buying power enables it to competitively and successfully sell nationwide. The company has more than 45,000 customers representing all 50 states and 15 foreign countries.

## Catalog

Dynamic Fastener's free 140-page full-color Tool and Fastener Hand Guide (shown at right) covers fastener applications, engineering data, availability of

types, size ranges, and fastener materials.

The Hand Guide also features Dynamic Fastener's flagship products: D•F® screws, Dyna-Guard® snow retention system for metal roofs, Dyna-Clamps® to accommodate many different profiles of standing seam roofs, and 100 million D•F® rivets in stock, of which over 70 million are pre-painted and stocked in bags of 250 pieces.

In addition to discussing screws and anchors, the Guide provides prices and other information relating to flashings, sealants, insulation tapes, safety equipment, hand tools, power tools, and more.

There are seven Dynamic Fastener locations: Kansas City, Missouri (main office); Chicago, Illinois; Houston, Texas; Las Vegas, Nevada; Memphis, Tennessee; St. Louis, Missouri; and St. Paul, Minnesota. **MOH**



**Dynamic Fastener**

*Everything for the Metal Builder & Roofer®*

**2022 TOOL & FASTENER HAND GUIDE**

Over 99% of standard orders received by 4:00 p.m. CST will ship that *same day!*

<p>MAIN OFFICE <b>KANSAS CITY</b> 9911 E. 53rd St. Raytown, MO 64133 816-359-0899 Local 800-844-1199 Fax 800-821-5448 NEI</p>	<p><b>CHICAGO</b> 2575 W. LeMoine St. Melrose Park, IL 60139 708-615-1450 Local 708-615-1451 Fax 800-573-7787 NEI</p>	<p><b>HOUSTON</b> 1414 Brittonmoore Rd. Houston, TX 77043 713-647-8695 Local 713-647-8635 Fax 800-988-5490 NEI</p>	<p><b>LAS VEGAS</b> 6455 Dean Martin Dr. Ste J Las Vegas, NV 89118 702-566-1555 Local 702-566-0175 Fax 866-936-8665 NEI</p>	<p><b>MEMPHIS</b> 3700 Cherry Rd. Memphis, TN 38118 901-369-8000 Local 901-369-0105 Fax 800-727-0288 NEI</p>	<p><b>ST. LOUIS</b> 12800 Pennridge Dr. Bridgeton, MO 63044 314-739-8771 Local 314-739-8691 Fax 800-444-0515 NEI</p>	<p><b>ST. PAUL</b> 2316 Territorial Rd. St. Paul, MN 55114 651-644-1212 Local 651-644-1124 Fax 800-755-2426 NEI</p>
---	---	--	---	--	--	---

**D•F SELFDRILLERS**  
With Dyna-Coat®  
PG. 74-83

**D•F RIVET BOSS®**  
PG. 92-93

Pay as low as **\$1.22\***  
**D•F DYNA-CLIPS®**  
PG. 66

**D•F ultra-premium Impact-Resist™ nut runners**  
With Mag 10 **\$3.25**  
5/16 x 2-9/16" 100 **\$2.30** PG. 71

**DYNA-GUARD®**  
D•F SNOW RETENTION FOR METAL ROOFS  
PG. 66-69

**D•F DYNA-CLAMPS®**  
DC-U 600+ **\$6.45\*** \*see PG. 68

**DEWALT**  
#DW267, DW268 or DW269  
5+ **\$192.85** PG. 4

**Milwaukee**  
18V 1/2" hex impacting screwdriver kit with FREE 40-pc bit set  
2850-21P **\$99.95** PG. 28

**D•F DROP-STOP®**  
leaky metal roof?  
#3 **\$6.85** PG. 56, 57

**D•F DYNA-FLASH®**  
#3 **\$6.85** PG. 61-63

PRICES GUARANTEED UNTIL MARCH 31, 2023 OR WHILE SUPPLY LASTS - SUBJECT TO CHANGE WITHOUT NOTICE

**(800) 821-5448** Order online @ [www.dynamicfastener.com](http://www.dynamicfastener.com)

© Copyright 2022 D.F.S.

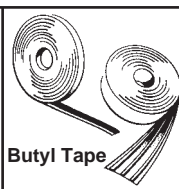
Call 800-821-5448 for your **FREE** 140 pg 2022 Hand Guide



# DYNAMIC FASTENER



Everything for the Metal Builder & Roofer®



You supply the crew.  
We'll supply the rest.™

CALL 800-821-5448 or Order Online @ [DYNAMICFASTENER.COM](http://DYNAMICFASTENER.COM)  
Call for your Free Full Color 140 Pg. Hand Guide. Better yet, call us for your next tool or fastener requirement. Discover for yourself why your peers enjoy doing business with our company!

# Everlast Metals

METAL OF HONOR AWARDS: 17 ■ WEBSITE: [www.everlastmetals.com](http://www.everlastmetals.com) ■ PHONE: 800-418-5057

## Uncompromising Quality & Service

Built on a foundation of uncompromising product quality, Everlast Metals is a leader in high-performing architectural metal roof and wall systems. Our pursuit of the highest quality materials and commitment to our customers is unmatched.

Everlast Metals maintains one of the largest inventories of coil and flat stock in the industry; as a partner, you get the material you need when needed. Coil warehouses strategically located in Mid-Atlantic, Midwest, and New England put Everlast Metals in the unique position to supply customers using our fleet of company trucks and joint carrier freight partners. In addition to flexible freight options, Everlast leverages its large coil, flat sheet inventory, and strong supplier relationships to ensure customers get the products they need as quickly as possible.

When selecting Everlast Metals as your architectural roofing and wall systems partner, you'll get endless creative options. We offer an inventory of up to 26 colors in 24 gauge and .032, and .040 aluminum, coated with the high-performance Fluoropon® 70% PVDF paint system. In addition, up to 18-gauge steel



and .063 aluminum are also available as special orders. Inventory of 26-gauge steel is available in 24 designer colors, 8 of which have a Matte finish. Designed for durability, all 26-gauge colors utilize the strongest SMP coating available in the industry.

Coil and flat sheet widths up to 48" are available. And Everlast Metals' manufacturing capabilities allow customers to slit coil and flat sheet to their specifications.

Everlast Metals panels are available in a wide variety of materials and finishes. Substrates include G-90 Galvanized Steel, Galvalume® steel, and Aluminum. In addition, we provide eight profiles of concealed fastener roof panels and seven custom wall and soffit panels.

All Everlast Metals panels carry UL and ASTM testing to give architects and building owners confidence in the quality of our components. By selecting Everlast Metals as your architectural systems provider, you're choosing a manufacturer with industry-leading structural and performance testing, commitment to continuous improvement, and trendsetting science.

We understand the performance demands of your clients. Everlast Metals believes in looking at each customer relationship as a partnership, working to find solutions tailor-made to your specific needs. Even when projects call for technical drawings and weather-tightness warranties, Everlast has the knowledge and expertise to take that project from conception to completion.

Everlast Metals is the logical choice for uncompromising quality if you are looking for a partner in the architectural roof and wall systems. **MOH**





# WEATHERTIGHT WARRANTIES AVAILABLE



## OFFERING:

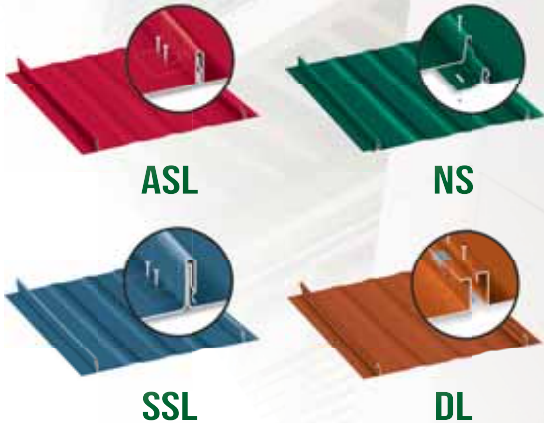
- Heavy Gauge Painted Steel or Aluminum
- Solid or Vented FP & RP Panels for Wall or Soffit Applications
- Double Folder Capabilities for Custom Trim or Hard to Find Wall Panels
- Quick Turn Around for Slit Coil
- Ready to Ship Fluropon® and Polyester Aluminum Flat Sheets
- Eight Concealed Fastener Standing Seam Profiles Available

## PAINT:

- Up to 26 colors in 24 gauge and .032 and .040 aluminum coated with Fluropon® 70% PVDF
- Up to 24 designer colors in 26 gauge in the strongest SMP coating available in the industry



## ROOF AND WALL SYSTEMS



CONTACT EVERLAST METALS FOR QUICK SERVICE ON SLIT COIL, FLAT SHEETS AND ALL OF YOUR EXTERIOR METAL BUILDING COMPONENT NEEDS.



## PLANT LOCATIONS:

- Lebanon, PA  
10 Enterprise Court, Lebanon, PA 17042
- Bridgton, ME  
24 JR Mains Drive, Bridgton, ME 04009

# Everlast Metals

FOR MORE INFORMATION CALL: 800-418-5057 OR VISIT US AT [WWW.EVERLASTMETALS.COM](http://WWW.EVERLASTMETALS.COM)

# Hershey's Metal Meister

METAL OF HONOR AWARDS: 2 ■ EMAIL: info@hersheysmm.com ■ PHONE: 877-289-3030



We are very humbled by the Metal of Honor nomination and will continue to do our part in providing quality products along with unmatched service to accommodate our customers.

We have some exciting news to share regarding new features and new machines we are bringing to market.



**1 Slinet S1.0 cut-to-length automatic slitter.** This slitter is where performance and simplicity meet. For an affordable price that fits your budget, you still get automatic knife adjustment, crosscut, and user-friendly touch screen controls.

**2 Halo H6.1 uncoiler.** This machine will rival any existing uncoiler and pairs very nicely with our Slinet S1.0. It features a 7-inch main shaft, a strong tube steel frame, 6-ton capacity, and the ability to feed up to 300 feet per minute. We are excited to see the impact it will have on the metal market.

**3 V-link integration.** This integrated software allows our machines to be networked together. Utilizing a barcode system, we can bring efficiency to your trim manufacturing process from design to finished product!

We strive to meet and exceed the needs of our customers and will continue to provide solutions for your trim production demands.



You may have also noticed we have recently changed our Variobend logo! We concluded that a nice facelift was needed and are excited to see our products display our new look!

We want to thank everyone for their part in nominating us for this award. We commit to doing our best to make sure we deserve it for years to come.

Thank you! **MOH**

SIMPLIFY YOUR OPERATION WITH **v-link**

Our integrated software eases the steps of design to production in a smooth, simplified process.

- 1. DESIGN**  
Design Your Profile.
- 2. CUT**  
Cut Metal into with our Slinet Machine.
- 3. LABEL**  
Apply barcode labels.
- 4. BEND**  
Scan barcode and bend metal profile with Variobend folder.
- 5. TRIM**  
Create custom trim products.



SIMPLIFY YOUR OPERATION WITH

# v-link

Our Integrated Software Eases Steps of Design to Production in a Smooth Simplified Process.



## DESIGN



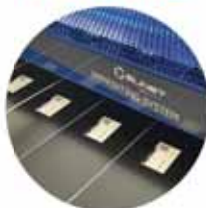
Design Your Profile

## CUT



Cut Metal Flats with Our Slinet Machine

## LABEL



Apply Bar Code Labels

## BEND



Scan Barcodes and Bend Metal Profile with Variobend Folder

## TRIM



Create Custom Trim Products



[info@hersheysmm.com](mailto:info@hersheysmm.com)



420 Progree Dr.  
Mattoon, IL 61938

**SLINET**  
ASCO machines

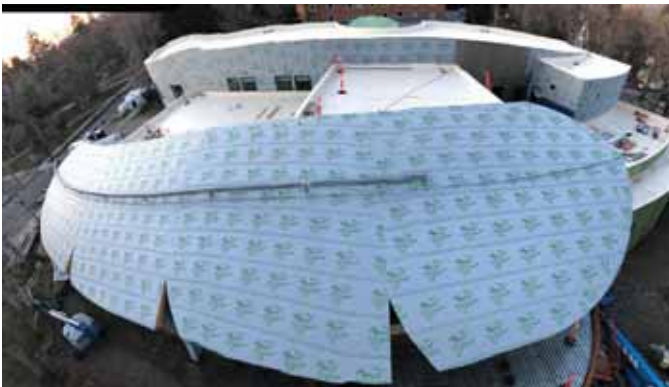
Toll Free: (877) 289-3030

*Speed. Accuracy. Service.*

*Don't Just Bend Trim. Variobend It! Call Today!*

# Kirsch Building Products

METAL OF HONOR AWARDS: 2 ■ WEBSITE: [www.sharkskinroof.com](http://www.sharkskinroof.com) ■ PHONE: 877-742-7507



Photos, top & middle: Montana State University & Chris Kamman (SkyLab Media House). Bottom: Zach Kilwein, Beartooth Metal Roofing.

**Metal Roofing Manufacturer:**  
Sheffield Metals International, Sheffield, Ohio

**Roofing Contractor:** Zach Kilwein, Beartooth Metal Roofing, Billings, Montana

*“In an eagle, there is all the wisdom of the world.”*

Lame Deer,  
19th century Lakota leader

## Eagle Feather Metal Roof Honors Native American Heritage & Culture

Kirsch Building products has a product for every roofing and wall barrier project. Sharkskin Ultra SA® was chosen as the roof and wall underlayment for Montana State University’s American Indian Hall, which honors Native American cultures, beliefs, and traditions.

Of special note on the Bozeman, Montana campus building, which has been in the works since 2004, is the metal roof designed as an eagle feather.

Prior to the standing seam roof and metal wall panels being installed, Sharkskin Ultra SA® provided excellent protective qualities, which included long term UV resistance and excellent high wind uplift resistance.

The beautiful eagle feather metal roof detail was designed and specified to last. The roof is comprised of 22-ga. 70% PVDF-coated Galvalume panels that transition from Silver Metallic on the left end to Slate Gray as the middle tone to Dark Bronze on the right end. The Sharkskin Ultra SA® was selected as the roof underlayment beneath the multi-colored feather-shaped metal roof and metal wall panels, as it will provide long term moisture resistance.

Beneath the standing seam metal roof and wall cladding, Sharkskin Ultra SA® is also providing high-temperature resistance.

In addition to benefitting the roofing system, Sharkskin Ultra SA® has benefits roofers will appreciate. Benefits include its excellent adhesion properties ... it will adhere to the roof and wall substrate, at 10° F and rising, without the need for “primer” which saves the roofer time = labor dollars.

Another important benefit: Sharkskin Ultra SA® is slip-resistant — even when wet — allowing for a safe walking surface no matter the conditions during installation.

Sharkskin Ultra SA® is designed to perform in the most challenging circumstances. It is Miami-Dade County, ICC-ES, Florida Building Code and Texas Department of Insurance approved. The high-performance underlayment also has no VOCs, contributes to LEED, and recyclable.

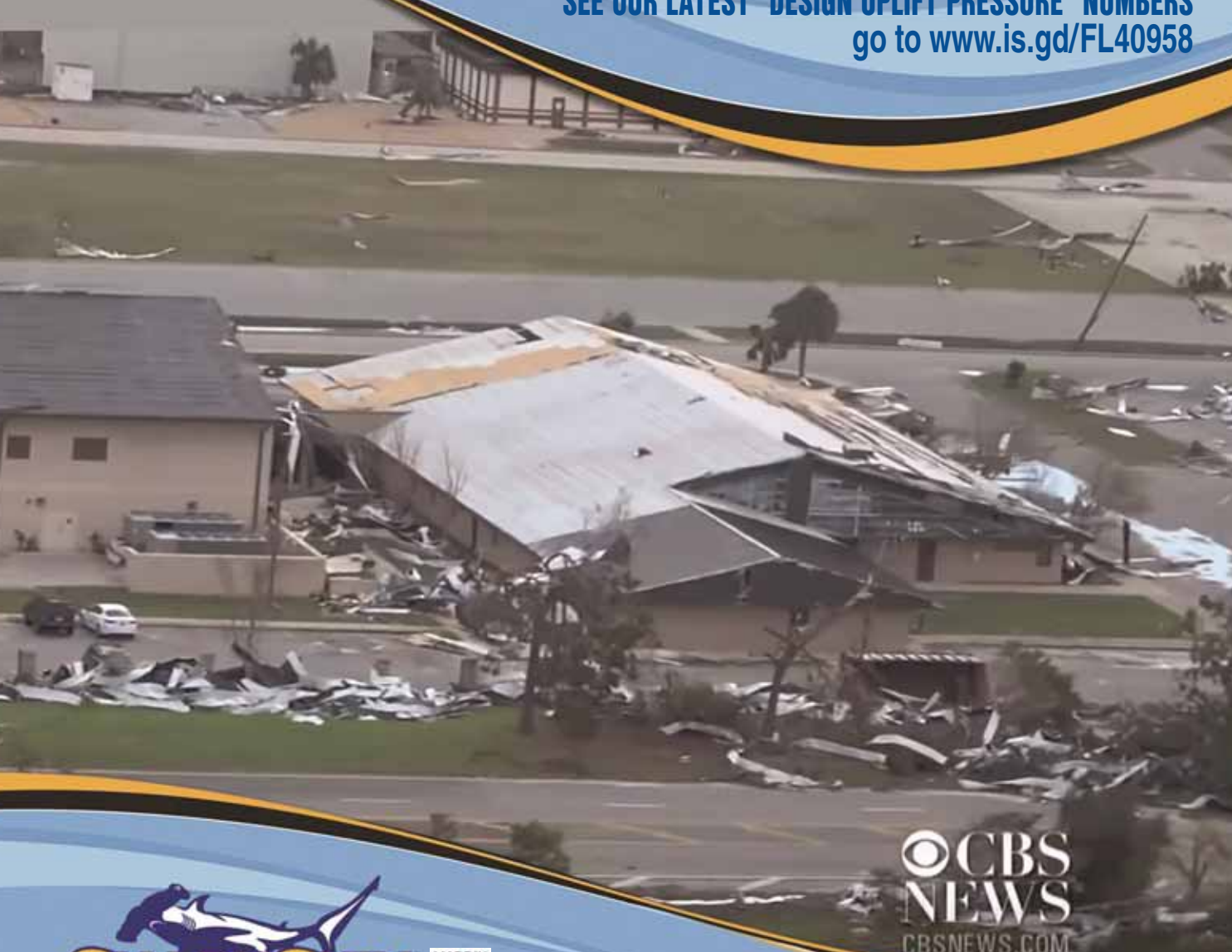
Kirsch Building Products offers a Sharkskin product for every roofing and wall barrier project. Visit [www.sharkskinroof.com](http://www.sharkskinroof.com) today for more information. **MOH**



# Why **SHARKSKIN**? We Outperform the Competition!

**Tyndall AFB, Hurricane Michael, Ground Zero:  
Although the metal roof was lost, Sharkskin  
Ultra SA<sup>®</sup> maintained its integrity with no failure  
against 175 mph winds with 200 mph gusts.**

**SEE OUR LATEST "DESIGN UPLIFT PRESSURE" NUMBERS  
go to [www.is.gd/FL40958](http://www.is.gd/FL40958)**



**CBS  
NEWS**  
CBSNEWS.COM

  
**SHARKSKIN**  
*The Ultimate Roof Underlayment*  
MADE IN THE USA

877.742.7507  
[www.sharkskinroof.com](http://www.sharkskinroof.com)



**WINNER**

2023 METAL OF HONOR WINNER

# Malco Products

METAL OF HONOR AWARDS: 8 ■ WEBSITE: [www.malcotools.com](http://www.malcotools.com) ■ PHONE: 320-274-7387



Malco is a 70+ year leading solution developer and manufacturer of high-quality tools for the building trades that set the standard for efficiency and safety on the job.

Malco offers a variety of versatile and built-tough tools for metal roofing, including the TurboShear® line of drill attachments for cutting and fabricating a broad range of building materials and sheet metal, and the reliable and ergonomic Andy™ Snips for crisper cuts in many types of materials.

## 20 Years of TurboShears

This year, Malco is celebrating 20 years of TurboShears. Malco has introduced more than 9 different TurboShear products since its initial introduction in 2003, from sheet metal to vinyl to backerboard.

One of the most popular products in the line is the TSCM TurboShear for corrugated metal, which has elongated blades that create a steep 75-degree offset approach for easy cross cuts, quick lengthwise cuts, and precise outlet cuts

on corrugated mild steel. They're made to last and highly portable, as well as facilitating easy material flow.

Another best-selling TurboShear is the TSMD, a double-cut metal shear that fits on a drill you already own, and is one of the most versatile models Malco offers. TSMD can navigate up to 90° outside profiles of metal roofing panels or metal ductwork with clean shearing on both edges of the cut, and are highly durable.

TurboShear drill attachments are designed to make clean cuts the first time and help save valuable time on the job, providing maximum efficiency and ergonomics.

## New Andy Offset Left Snips

New in 2023, Malco launched the new Andy Aluminum Handled Offset Left Snips, which provide up to 60% faster cutting speeds and up to 45% longer cuts when operating one-handed for superior material flow and maneuverability, verified by internal testing.

These Andy snips are built with

incredibly strong, lightweight aluminum for ease of use and durability, and the ergonomic offset handle provides a safer and more comfortable angle for cutting to reduce hand fatigue. **MOH**







**WHEN MANUAL SNIPS DON'T CUT IT,  
TURN YOUR DRILL & IMPACT INTO A POWERED SHEAR!**

**CELEBRATING**



**YEARS**  
OF TURBOSHEARS

2003-2023



TS1

TSHD

TSCM



#DamnGoodTools

2023 METAL OF HONOR WINNER

# Maze Nails

METAL OF HONOR AWARDS: 7 ■ WEBSITE: [www.mazenails.com](http://www.mazenails.com) ■ PHONE: 800-435-5949 ■ FAX: 815-223-7585

Let's get back to the basics! How has Maze Nails survived through the years in the Building Industry? Simply put – Maze doesn't sacrifice quality for price, they know the value of customer service, they keep a large inventory of nails and their sales and manufacturing teams are proud to make all of their nails in the US - out of American-Made Steel!

Maze Nails has been serving the building industry for the past 2 centuries with top-quality Double Hot-Dipped Galvanized, stainless steel, aluminum and copper nails. Lifetime homes require lifetime fasteners that withstand the elements. The true test of a product is shown over time and Maze performance has surpassed all other nail manufacturers in the market. Don't be fooled by the cheap imports—TRUST the experts, TRUST the facts and TRUST Maze!

Maze Nails has an educated team ready to answer all your fastener questions, offer tips and give guidance to help you complete your job. When you call the toll-free phone number, you always get an experienced sales team member! Your business



is highly valued — and Maze wants to make sure you're happy with your fasteners. Contact a Maze representative today!

Huge inventories are ready for immediate shipment from the Maze plant in Peru, IL. Most Maze orders ship within 2-3 days! Time is money — and slow shipments of fasteners that hold up your project are unacceptable to Maze.

Buyer beware: Not all galvanized nails are created equal. Hot-Dipped Galvanizing (HDG) is the most reliable and preferred way to coat steel nails with zinc. Maze Double Hot-Dipped nails are dipped twice in molten zinc, which fills any pinholes and adds thickness to the outer layer of zinc. Thickness and uniformity of zinc are the key to a truly corrosion-resistant fastener.

Proudly supporting the Post Frame Industry and American builders for well over 100 years has earned Maze an A+ rating amongst their customers! Maze will stay true to their beliefs and continue supplying top-notch fasteners to the industry that has built their successful business! **MOH**







# Celebrating

# 175 YEARS

# MAZE



## MAZE LUMBER

- 1848 Founded by Samuel Maze in Peru, Illinois
- 1886 Purchases First Nail Machine to Produce Nails from Pure Zinc
- 2023 *Maze Lumber is the Oldest Lumberyard in Illinois*

## MAZE NAILS

- 1900 First Manufacturer to Pack Nails in 50 Lb. Boxes
- 1905 First Manufacturer to Pack Nails in 5 Lb. Boxes
- 1914 Produces the First Hot-Dipped Nails by Hand
- 1930 Designs and Launches Spiral Shank Nail Product Line
- 1934 Designs and Launches Ring Shank Nail Product Line
- 1955 Develops Exclusive Stormguard Double Hot-Dip Galvanizing
- 1996 Founded S.S.E., our Collating Division
- 2006 Earns Miami-Dade County Approval on Selected Roofing Nails
- 2008 Certified by Scientific Certification Systems for Recycled Content
- 2011 Fifth Hot-Dip Galvanizing Production Line Installed
- 2011 Highlighted on ABC News, Diane Sawyer's *Made In America*
- 2016 Installs Second Paint Production Line for Trim Nails
- 2023 *EVERY Maze Nail still 100% Made in the USA*

## AMERICA'S PREMIER SPECIALTY NAIL MANUFACTURER





2023 METAL OF HONOR WINNER

# MFM Building Products

METAL OF HONOR AWARDS: 9 ■ WEBSITE: [www.mfmbp.com](http://www.mfmbp.com) ■ PHONE: 800-882-7663



*Peel & Seal® is the original, self-adhering low-slope roofing membrane designed that can be left exposed to the elements indefinitely. Ideal for repairing or sealing seams on metal roofing systems for a watertight seal.*



*Ultra HT Wind & Water Seal® offers premium performance without having to paying a premium price. A rock-solid product to withstand your most demanding metal roofing application.*

## Committed to the Roofing Industry

MFM invested in a major expansion project that was completed in 2022 to increase our capacity and availability of high-temperature underlayments for the metal roofing industry. We offer several self-adhered steep slope underlayments rated to 250°F that are specifically engineered to take the heat of metal roofing and metal shingles.

MFM also offers a full line of other self-adhering and self-sealing roofing products that protect the structure before, during and after the final roofing system has been installed. All



*MFM Roof Deck Tape™ is designed to effectively seal the seams on plywood and OSB roofing panels. Cover with any of MFM's underlayment products for complete waterproofing protection! Watch the video on our website.*

of our products are suited for new construction or re-roofing applications.

## Look to MFM for:

- Granulated ice & water underlayments
- High-temperature underlayments
- Tile and metal underlayments
- Shingle starter membranes
- Low-slope roofing membranes
- Specialty roofing and construction tapes
- And so much more!

## Battling Mother Nature

MFM Building Products specializes in only waterproofing membranes and sealing tapes. Count on MFM and our more than 60 years of proven waterproofing expertise to provide the right solution for your specific application and keep Mother Nature from wreaking havoc on your project.

MFM is an Employee-Owned ESOP company and takes great pride in the quality of our work. Our products are manufactured in the United States and come with a rock-solid warranty to back it up. It's the way we've been doing business since 1961.

## Need a Sample?

Check us out at [www.mfmbp.com](http://www.mfmbp.com) or email [info@mfmbp.com](mailto:info@mfmbp.com) to learn more about our products or to request a FREE sample to see the quality for yourself. **MOH**





# ULTRA HT

WIND & WATER SEAL®  
HIGH TEMPERATURE

## The best roof protection under the sun.

Regardless of the project, big or small, commercial or residential, Ultra HT is the premium, high temperature, self-adhering underlayment engineered to take on any roof application.

- High temperature rated up to 250°F
- Non-slip, cross-laminated construction
- Self-seals around roofing fasteners
- Split release liner for easy valley installation

Give your project the best protection before, during and after installation of the final roofing system. Peace of mind you and your customer will appreciate.

**mfm**® BUILDING PRODUCTS CORP.

Visit [mfmbp.com](http://mfmbp.com) for a free sample or call 800.882.7663 today.



MIAMI-DADE COUNTY  
APPROVED





2023 METAL OF HONOR WINNER

# Onduline North America

METAL OF HONOR AWARDS: 1 ■ WEBSITE: [us.onduline.com](http://us.onduline.com) ■ PHONE: 540-898-7000 ■ FAX: 540-898-4991

Onduline North America is proud to be honored as top supplier in the industry. Our waterproof roofing solutions got you covered from lightweight corrugated asphalt sheets of the Ondura® family to PVC, Polycarbonate, and Multiwall panels of the Tuflex® family.

At Onduline, we are committed to protect you and your professional needs, above all. **MOH**

**Onduline**<sup>®</sup>  
Lightweight roofing systems







# Onduline<sup>®</sup>

NORTH AMERICA

Our lightweight roofing solutions integrate versatile products perfect for your agricultural and professional needs.



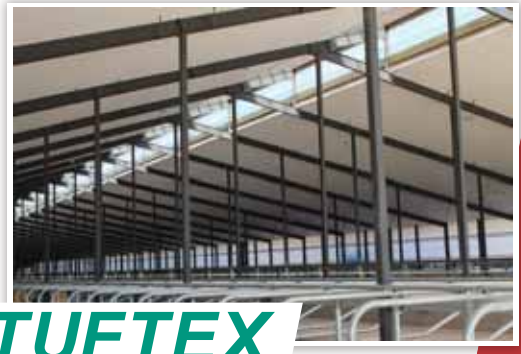
Waterproof



Easy to install



Excellent performance



**TUFTEX**



**ONDURA<sup>®</sup> PREMIUM** SERIES



For distribution opportunities, orders, and customer service call 540-898-7000 or email us at [customerservice@onduline-usa.com](mailto:customerservice@onduline-usa.com)



# PAC-CLAD | Petersen

METAL OF HONOR AWARDS: 18 ■ WEBSITE: PAC-CLAD.com ■ PHONE: 800-PAC-CLAD

## Fire Station's Award-Winning Metal Roof is a Community Standout

Formed in 1926, the Prince Frederick Volunteer Fire Department has been a community feature for more than 90 years. So, when it came time to replace Company 2's previous firehouse, built in the 1950s, community was at the heart of the designers' plans. Topping the new structure is a classic standing-seam metal roof that promises performance.

"The station is situated at the boundary into the 'Old Town' district of Prince Frederick. The building design was meant to convey a welcoming presence and is a modern take on the traditional architecture of the area," says project manager Michael Matula of Bignell Watkins Hasser Architects, Annapolis, Md.

The façade's design highlights the glass apparatus-bay doors, which feature old-school arched outlines. The doors' curves and two flat-roofed, tower-style bump-outs help balance the horizontal orientation of the building's long front elevation. "The bump-outs were placed to generate visual interest and break up the mass of the main façade along the road," Matula explains.



## Unmatched Performance

Prince Frederick is less than five miles to the hurricane-prone Chesapeake Bay coast and its frequent high winds. "We decided to use a metal roof, due to the long-term reliability and look of the product," Matula says. "We wanted a roof system that will remain intact during the worst weather conditions."

Orndorff & Spaid of Beltsville, Md., installed PAC-CLAD panels for the roof and several locations throughout the exterior and interior. These include Tite-Loc Plus panels in Dark Bronze for the roof, and Reveal panels to highlight the façade around the glass-enclosed fire-slide pole and to fill gable space.

Mike McKinney, Orndorff & Spaid's

project manager on the job, praises Petersen's availability throughout each project: "I started putting on Petersen panels in 1979 — dealing with their details is second-nature for us," he says. "Whenever we have any issues, they're always there to help us out."

## Highly-Praised Design

The firehouse design has had a tremendous response from department volunteers and area residents, as well as receiving an Excellence in Design merit award and the People's Choice award from the AIA's Chesapeake chapter. McKinney adds, "We receive compliments from members of the fire service throughout the region and also on a national level when we attend conferences."

Petersen, a Carlisle company, manufactures a wide range of PAC-CLAD architectural metal roofing and cladding products in multiple gauges of steel and aluminum. All are available in PAC-CLAD's wide spectrum of PVDF finishes including brilliant metallics, sophisticated wood grain and rich ore finishes. Many colors meet LEED requirements and are Cool Roof-rated, and all finishes are backed by an outstanding non-prorated finish warranty. **MOH**

*Photos by hortonphotoinc.com.*





# Rustic Design

With a metal roof in a weathered steel finish



A metal roof in a Weathered Steel finish gives this wildlife refuge visitor center a classic farm-style look reminiscent of agricultural buildings seen at the time of President Roosevelt's visit to this area.

Theodore Roosevelt Visitor Center, Onward, MS    Installing Contractor: Central Roofing  
Architect: John S. Odom    Photo: hortonphotoinc.com



**PAC-150 (180° seam)**  
Metal Roof System  
Weathered Steel Finish



[View the case study](#)



# ProVia

METAL OF HONOR AWARDS: 2 ■ WEBSITE: [www.provia.com](http://www.provia.com) ■ PHONE: 800-669-4711 ■ FAX: 877-735-2057

ProVia metal roofing is a smart choice for building professionals — dealers, builders, roofing contractors, and installers. Homeowners love its beauty, durability and long-term value, and building pros appreciate its strength, installation integrity, and return on investment.

## Eight Advantages of the ProVia Metal Roofing System:

1. It's a premium metal roofing product, manufactured with 26-gauge G-90 galvanized steel — up to 30% more than the industry average, but three times lighter than asphalt shingles

2. The GalvaTec™ finish reflects UV rays, resists extreme temperatures, and protects against fading and corrosion

3. The 4-way locking system and built-in screw flange of the shake and slate panels provide superior edge-to-edge protection against wind uplift, wind-driven rain and snow; the barrel tile profile uses two anchor points for a secure and fixed installation

4. The system is third-party tested and certified for tensile strength, fire, wind, rain, and corrosion protection

5. The shake and slate profiles are certified to withstand wind speeds up to 180 mph and are approved for High Velocity Hurricane Zones (HVHZ) within Florida, including Broward and Miami-Dade counties; the barrel tile profile is certified to endure winds up to 130 mph

6. The system was developed with the installer in mind and reduces jobsite labor — the preformed starter panels are ready to install right out of the box, and the trim / accessory package is custom engineered for ease of use

7. The embossed panels provide the authentic look of cedar shake, quarried slate, and Spanish barrel tile, offering great curb appeal that homeowners love

8. The system has a limited lifetime non-prorated transferrable warranty and a 50+ year lifespan



Homeowners want metal roofing systems that aren't so industrial looking, like most exposed fastener and standing seam systems on the market today; they prefer a more elegant and traditional looking roof that makes their home stand out. ProVia's handsome embossed and variegated panels, in natural earthtone shades and the texture and look of shake, slate, and clay tile, complement any style of home.

## Partner with ProVia

ProVia is a nationally known manufacturer of professional-class entry door systems, vinyl replacement windows, vinyl siding, manufactured stone, and metal roofing. ProVia stands for "The Professional Way," and that means we hold ourselves to a higher standard of integrity, accountability, and quality.

Customers count on ProVia for premium quality products, manufactured using progressive technologies combined with old world craftsmanship. Professionals and homeowners trust in the durability, energy efficiency, security, and long-lasting beauty of our products.

ProVia customers also benefit from resources like our Installer Certification Programs, online design and visualizer tools, how-to video library, and prompt, industry-leading customer service and sales support.

Learn more about ProVia metal roofing by visiting [www.provia.com/6reasons](http://www.provia.com/6reasons) or email [metalroofing@provia.com](mailto:metalroofing@provia.com).

THANK YOU TO METAL ROOFING MAGAZINE FOR OUR 2023 METAL OF HONOR. **MOH**



# HEY ROOFING PRO!

INCREASE YOUR PROFITS WITH  
PROVIA METAL ROOFING



ProVia Metal Roofing is **more profitable per square** than asphalt roofing. It's the next generation of metal roofing—a premium stamped panel roof system that elevates your product offering, provides long-term ROI, and boosts your bottom line as well.



DOORS | WINDOWS  
SIDING | STONE | ROOFING

SCAN TO  
LEARN MORE



2023 METAL OF HONOR WINNER

# SWI Machinery

METAL OF HONOR AWARDS: 1 ■ WEBSITE: [www.swimachinery.com](http://www.swimachinery.com) ■ PHONE: 770-766-0880

As the demand for durable, energy-efficient metal roofing grows, so does the need for sheet metal machinery as dependable as the roofing materials themselves. And, as we all know, the price of materials has seen a sharp increase in recent years, making efficiency and waste minimization even more paramount than ever before. SWI Machinery has fully recognized these needs for years and is proud to rise to the challenge no matter what your sheet metal operation entails.

SWI has established itself as an international leader in sheet metal machinery. Our state-of-the-art machines provide superior, dependable solutions for operations both large and small throughout the industry. Our customers include some of the world's largest roofing companies as well as hundreds of family-owned enterprises located around the globe. With literally thousands of machines in operation today across multiple continents, SWI is widely known as the go-to provider for reliable, efficient sheet metal technology to meet virtually any construction need.

Our world-class, innovative machines are fast, flexible, easy to operate, and contain a host of advanced features to maximize production and safety for operators. Our range includes Simplex folders, Duplex folders, Marxman manual and automatic slitters, Uncoilers, and Recoilers.

When any of our machines are purchased, our customers can rest assured that it's not the end of the line for their business relationship with us. Our team continually strives to offer unmatched support that lasts well past the initial install. That includes training, technical improvements, maintenance, and a



host of general inquiries to ensure the customer gets the absolute best out of their machine to meet all their manufacturing needs. Thanks to our fleet of service vans located throughout the country and stocked full of tools and parts, customers can have the peace of mind knowing that any needed maintenance is not far away.

We provide this ongoing support for every SWI customer, large or small. That goes for customers who may have recently purchased their first SWI machine to the loyal customers who've acquired an arsenal of our machines over the years. Our commitment to impeccable customer service has led to approximately 60% of our customers being repeat business. Creating happy customers through our team's commitment to their success is what truly sets SWI apart in the industry.

It's easy to see why the reliable, state-of-the-art technology of our machines is in such high demand for the efficiency it brings to any operation.

Learn more by visiting [swimachinery.com](http://swimachinery.com) or calling (770) 766-0880 today. **MOH**





## ADVANCED EFFICIENCY FOR **YOUR SHEET METAL OPERATION.**

*Maximize Efficiency & Minimize Waste with SWI Machinery.*

SWI Machinery is engineered to help maximize efficiency in your operation. By combining innovative features that minimize waste while requiring less manual operation, SWI's complete catalog of sheet metal machines can help your bottom line.



### **DUPLEX**

SWI Duplex folders are built for speed and durability. The Duplex eliminates the inefficiencies seen in other up & down folders through intelligent design and incredible ease of use. With the seemingly endless race to make folders move faster,

SWI has taken advice from some of Europe's most experienced safety experts to engineer a machine that provides exceptional throughput with movements limited to sensible speeds that are less hazardous to operators.



### **MARXMAN PRO**

The Marxman Pro is one of the most advanced sheet metal blanking systems on the market. Automatic knife setup and auto nesting ensure all jobs are processed quickly and with minimal material waste. Plus, with the Pro's part cut system, you can part cut ANY slit, even in the middle of a sheet, with no damage to adjacent parts. Or, when all parts are the same length, simply use the shearing blade to cut them all to length.

The Marxman Pro also comes standard with an automatic labeling system, which applies custom printed barcodes to each part, allowing you to move, scan, and load projects between slitter and folder with minimal downtime and reduced risk of operator error.

2023 METAL OF HONOR WINNER

# Acu-Form

METAL OF HONOR AWARDS: 1 ■ WEBSITE: [www.acuformequipment.com](http://www.acuformequipment.com) ■ PHONE: 330-674-4003 ■ FAX: 330-674-4035

For the last decade, Acu-Form has provided nothing less than the highest quality roll formers, implementing a tried-and-true manufacturing production process that prioritizes quality control checks, systems, and customer support.

The Acu-Form Promise includes:

**On-Time Delivery:** Your timeline matters. The timeline we promise is the timeline we deliver.

**Pre-Tested Machines:** Your machine will be pre-tested with your materials so when your machine arrives on-site it will be ready to put into production.

**Versatile Growth Opportunities:** Beyond your initial investment in the roll former, you have the ability to add and create new equipment to match your profile to expand your product offerings.

**Exclusive Through-Hardened D2 Tool Steel:** Our machines are manufactured with higher quality materials to ensure durability and performance at costs our competitors can't match.

**Power Options:** We offer hydraulic, mechanical, or electrical



power sources according to your needs. With options to do full automation.

**Shipping, Delivery, and Installation Available:** Once your product is ready, we can provide full-service shipping, delivery, and installation for you, including arranging for an electrician to match the specs of your project.

**Customer Service:** We are here to support you beyond delivery and installation. If you have a breakdown, we have parts in stock, in house, and can ship the same day. **MOH**



## Roll Forming Equipment



### Why Choose Us!

- Complete machine setup with exclusive through-hardened D2 Steel
- Equipment pre-tested to ensure production readiness
- Shipping, delivery and on-site installation available
- We are here to support you beyond delivery and installation
- Electric, Hydraulic & Mechanical systems available

## Our Products








- Panel Lines	- Shears	- Wrappers
- Trim Machines	- Slitters	- J Channel
- Uncoilers	- Corners	- Ridge Caps
- Custom Machines		

 (330) 674-4003  
Fax: (330) 674-4035

 [wayne@acu-form.com](mailto:wayne@acu-form.com)

 <https://www.acuformequipment.com/>

 10550 Township Road 262  
Millersburg, OH 44654



2023 METAL OF HONOR WINNER

# AppliCad Software

METAL OF HONOR AWARDS: 2 ■ WEBSITE: [www.applicad.com](http://www.applicad.com) ■ PHONE: 561-748-0545

## AppliCad's Innovations Make Roof Wizard the Metal Roofing Software Takeoff Tool of Choice

Over 30 years ago, AppliCad was the first to develop 3D CAD-based estimating tools for roofers, allowing them to replicate the geometry of a roof and simulate the application of roofing materials. Over time, AppliCad developed various methods to account for the reuse of offcut material and replicate what many installers were already doing in practice. This led to the development of a 'map'

or panel layout with a matching cutting list that allowed everyone to work off the same page.

AppliCad also developed a system that could extract the cutting list and send it directly to the controller on the roll forming machine. This reduces errors, improves productivity, and labels each sheet to identify where it should be installed. This improves accuracy and efficiency both in the factory and on-site and has been in use for more than 20 years.

With Roof Wizard, the team at AppliCad arguably developed the most

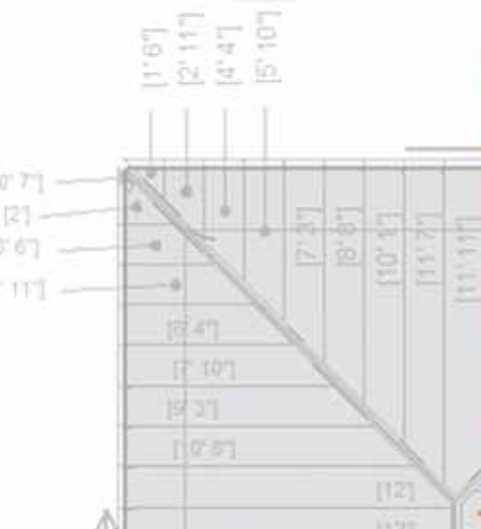
comprehensive toolkit for metal roofing estimators/quantity surveyors in the world. This toolkit allows them to extract the most accurate information for every job in a timely manner. Experienced operators using Roof Wizard software can estimate between 10 and 15 residential jobs per day, complete with detailed labor and material costs and production/fabrication documentation.

The AppliCad team proudly keeps adding functions that improve the estimating work for roofing and siding projects, no matter how complex. **MOH**



# THANK YOU

FOR VOTING FOR US, AGAIN!



Daniel, Ray, and Nick Smith

2023 METAL OF HONOR WINNER

# ASC Machine Tools

METAL OF HONOR AWARDS: 2 ■ WEBSITE: [www.ascmt.com](http://www.ascmt.com) ■ PHONE: 509-534-6600

## WHICH PANEL ROLLFORMING LINE FITS MY NEEDS?

The decision to purchase the right Panel Rollforming Line for your current and future needs is not easy! Each configuration has advantages and disadvantages depending on the application and existing setup in your plant.

ASC is proud to offer three Panel Rollforming Lines, which all feature High Quality Cast Rollformer Stands and multiple Pre- and Post-Cut Options. All Lines come with a Touchscreen Controller with optional Upload/Download of Orders, and Remote Support.

1. The **ALPHA SERIES™** is a feed-to-stop Rollforming Line and the lower-cost option for customers with reduced production volumes. The Line features a close-coupled front end or a hydraulic Post-Cut Shear, both keeping the line footprint under 40'!



2. The **SELECT SERIES™** is designed for customers with increased production needs and offers a variety of additional features to improve throughput and efficiency. Depending on the product and Cut-Off System, the Line offers production speeds between 150 and 250 FPM!



3. The **CLASSIC SERIES™** has been the strongest workhorse in the industry for decades! Paired with ASC's Mechanical Press, the line offers the highest Net Throughput speed in the Industry with up to 400 FPM on 10' panel lengths!



All of these lines are proudly designed and manufactured in the U.S. in Spokane, Washington, since 1949. **MOH**



## ASC MACHINE TOOLS, INC.

PREMIUM QUALITY ROLLFORMING MACHINERY - MADE IN THE USA SINCE 1949



PANEL LINES



TRIM LINES



DECKING LINES



TRACK LINES



ROLL UP DOOR LINES



CHANNEL LINES



CZ PURLIN LINES



PURLIN STACKER



SEAMING STATIONS



ROLL-UP STATIONS





2023 METAL OF HONOR WINNER

# Atlas Building Products

METAL OF HONOR AWARDS: 2 ■ WEBSITE: [www.atlasfasteners.com](http://www.atlasfasteners.com)

It has been a privilege for Atlas Building Products to serve the metal roofing and building community since 1896. Although a lot has changed in 127 years, our dedication to making our customers' lives easier has not.

Atlas understands the complexity of our customers' businesses and the difficulty in getting the best products, in the exact quantities, in the correct color, to the right place at the right time. We are honored by the trust they put in us to handle this complexity for them.

We are able to handle this complexity because we have the widest assortment of metal-to-metal and metal-to-wood fasteners in the industry, do custom

painting, and will even bundle fasteners with additional products like closure and sealant, so that our customers can get exactly what they need easily.

With multiple offices, manufacturing facilities, and warehouse locations across the United States, Atlas can quickly service our customers no matter which state they operate in.

For our existing customers, know that we appreciate you and we will strive to know and serve you better in the coming year. If you don't currently work with us, please reach out to one of our branches.

We'd love to chat about how we can partner with your business to meet your needs, whether big or small. **MOH**



USA MANUFACTURING & DISTRIBUTION TO SUPPORT YOUR BUILDING PRODUCT NEEDS  
VISIT OUR WEBSITE TO VIEW MORE OF OUR PRODUCTS



## FLAT TOP®

- HIGHER HEX PROVIDES POSITIVE SOCKET ENGAGEMENT
- SPECIAL UNDERCUT DESIGN ENTRAPS SEALING WASHER



## #10 WOODTITE HLX

- TYPE-17 POINT HELPS TO QUICKLY PENETRATE MULTIPLE LAYERS OF METAL PANELS
- HIGH MAJOR THREADS WITH LOW MINOR THREADS FOR ENHANCED PULLOUT VALUES

ASHLAND  
OHIO

1628 TROY ROAD  
ASHLAND, OH  
(800) 321-6977

FLAT ROCK  
NORTH CAROLINA

161 COMMERCIAL BLVD  
FLAT ROCK, NC  
(828) 629-2603

HOUSTON  
TEXAS

4822 N. SAM HOUSTON PKWY W.  
SUITE 100  
HOUSTON, TX  
(800) 503-2105



ATLASFASSTENERS.COM



METAL ROOFING  
METAL OF HONOR  
2023

Aztec Washer Company

## BUY AMERICAN ACT

ROOFING • PLUMBING • ELECTRICAL • HV/AC • SOLAR

Sealing pipes, cables, conduit, wire, solar, refrigeration lines, venting, etc.,.

ROHS , REACH, DFARS COMPLIANCE



### UNIVERSAL Master Flash®

**2 Compounds:**

13 EPDM Colors or High Temp Silicone

**10 Sizes - Pipe Range:**

Fits: 1/8" to 20" Pipes • Base Ranges: 4" to 25-1/4"



### STANDARD Master Flash®

**2 Compounds:**

10 EPDM Colors or High Temp Silicone

**15 Sizes - Pipe Range:**

Fits: 1/8" to 39-1/2" Pipes • Base Ranges: 2-1/4" to 44"



PH: (858) 513-4350 • FAX: (858) 513-4305  
info@aztecwasher.com • www.aztecwasher.com

2023 METAL OF HONOR WINNER

# Aztec Washer Company, Inc.

METAL OF HONOR AWARDS: 1

WEBSITE: [aztecwasher.com](http://aztecwasher.com)

PHONE: 1-800-WASHER5 ■ FAX: 858-513-4305

Aztec Washer Company, Inc. has served the building and construction industries for over 50 years. The industry-leading company is well-known for its competitive, dependable, quality products and reliable customer care. Aztec offers two primary sealing product lines: Master Seal® bonded sealing washers and Master Flash® pipe flashings. Master Seal® bonded sealing washers are vulcanized together through a process that allows the metal & rubber portion to maintain optimal weathering resistance from ozone, ultraviolet light, and most standard environmental agents. The Master Seal® bonded washers are designed to provide sealing, cushioning, and vibration resistance for applications where expansion and contraction occur, including metal roofing and siding. The Master Seal® Bonded Washers are designed to suit both common and unique applications. Our in-house design and stamping capabilities allow us to create custom washers that meet our customers' unique application requirements. (Call 800-washer5, email [sales@aztecwasher.com](mailto:sales@aztecwasher.com), or fax 858-513-4305.)

Aztec's in-house lab and network of resources provide top-rated compounds for its end-users with over 25 styles of Master Flash® pipe flashings available, plus the ability to develop designs to meet evolving conditions. With a minimum 20-year warranty as a standard for the Master Flash® pipe flashings, these ICC, IAPMO & UPC listed products are suitable for double-wall heated pipes (type-B vents) and many others such as electrical conduits, venting, and solar applications. Our parts are exceptional, as evidenced by an ICC listing, an ISO 9001-2015 certification, one of the best warranties, and customer satisfaction worldwide.

Our unique product quality and commitment and loyalty to our customers set Aztec apart from our counterparts. Working closely with our distribution network ensures that the right parts, in the right quantities, are available for customers' orders and delivered correctly the first time. Our customer service team personally works with clients to ensure their needs and satisfaction are met.

In today's ever-changing world, with shipping and supply chain challenges, Aztec has committed itself to our customers by doubling our inventory and increasing the volume of stock on hand. We have also extended shipping hours for carriers to provide superior shipping options and meet customers' just-in-time delivery requirements.

Continuous improvement means we strive for unsurpassed quality, service, and innovative product developments to keep Aztec Washer Company in its leadership position, and bodes well for continued success in the future. **MOH**



2023 METAL OF HONOR WINNER

# The Bradbury Group

METAL OF HONOR AWARDS: 1 ■ WEBSITE: [www.bradburygroup.com](http://www.bradburygroup.com) ■ PHONE: 620-345-6394

The companies within The Bradbury Group provide quality equipment and exceptional service to customers with all production level requirements. We offer entry-level pre and post-cut panel roll forming lines that produce the highest quality panel in the industry. For manufacturers already in the panel production business needing to increase their output rate, the Bradbury B.O.S.S.™ panel line has production speeds up to 300 FPM with an accuracy of 1/16". Bradbury builds hydraulic trim folders and trim roll formers that provide profile flexibility while saving floorspace. Bradbury controls make production machines more profitable by increasing manufacturing efficiency with our office to shop capabilities. We offer control retrofits — one of the most economical ways to increase productivity and reduce scrap on an existing machine. Bradbury Group equipment will increase your production and effectively grow your business. Call us to find out more about our products and services. One Bradbury Group working for you. **MOH**



## THE BRADBURY GROUP



Roof & Wall Panel Roll Forming Lines | Cee & Zee Purlin Roll Forming Lines  
Steel Framing Roll Forming Lines | Insulated Metal Panel Production Lines  
Hydraulic Trim Folders | Trim Roll Formers | Gutter & Downspout Machines  
Metal Shingle Production Lines | CTL / Slit Recoiling Lines  
Retrofits & Rebuilds | Controls | Operator / Maintenance Training

**[bradburygroup.com](http://bradburygroup.com) + 1.620.345.6394**

METAL  
OF  
HONOR  
2023

2023 METAL OF HONOR WINNER

# Direct Metals, Inc.

METAL OF HONOR AWARDS: 3 ■ WEBSITE: [www.directmetalsinc.com](http://www.directmetalsinc.com) ■ PHONE: 855-800-8878

Direct Metals Inc. (DMI) supplies fasteners, solid and vented closures, and other building accessories to the commercial, agricultural, industrial, and residential building industries. Key to its objective of bringing value to all its business partners is its commitment to a high level of product quality and customer service. DMI has an extensive network of authorized distributors to whom product is shipped from 2 convenient distribution centers in Fort Myers, Florida, and Plymouth, Indiana.

The core of the DMI product line is its extensive line of 304 SS cap SCAMP and zinc-aluminum alloy head DIRECT SEAL metal roofing fasteners for residential, post-frame, and pre-engineered metal buildings. Coatings and paint systems are now very sophisticated on metal roofing panels. DMI's long-life fasteners provide a 40-year warranty against red rust and match the panel warranties, giving building owners peace of mind that their investment is secure.

There is also a complete line of DMG85 coated PAN CLIP Pancake and Wafer head screws, panel clips, and painted rivets for standing seam roof systems. The 304 SS SCAMP and PAN CLIP all meet strict Dade County requirements for corrosion resistance. Solid 3' foam closures and vented 10' and 20' rolls provide protection and ventilation in roof systems. A complete line of butyl mastic, colored tube sealants for painted metal roofs, Dade County listed concrete anchors, Florida Building Code approved pipe flashings for metal and shingle roofs, PVC and polycarbonate panels for skylights, and reflective foil insulation round out the product offerings.

Direct Metals Inc. is truly a one-stop shop for all fasteners and accessories on a building project. We would like to thank the readers of *Metal Roofing Magazine* for this Metal of Honor recognition. We will continue to work hard to earn our customers' trust as we continue to pursue our mission of bringing value to all of our business partnerships. **MOH**

## SINGLE SOURCE

### PANCLIP SCAMP



**Whether a metal roof is standing seam or exposed fastener, DMI has the high quality products for a successful roof project.**

- PANCLIP low-profile Pancake & Wafer Head standing seam roof screws & panel clips for SNAP-LOCK & MECHANICAL LOCK profiles.
- SCAMP 304 SS Cap Type 17 & SD Points for Post-Frame & Steel-Frame metal building applications have a 40 year warranty.
- PANCLIP & SCAMP Fasteners meet Dade County, FL specifications for coastal, high-corrosion applications.
- Accessories such as Pipe Flashings, Butyl Mastic & tube sealants, 304 SS Rivets, solid & vented foam closure strips round out the product line.



**Let DMI be the SINGLE SOURCE  
you can rely on for your next metal roof project.**

**CALL 855-800-8878 • [www.directmetalsinc.com](http://www.directmetalsinc.com)**



2023 METAL OF HONOR WINNER

# East Coast Fasteners

METAL OF HONOR AWARDS: 9 ■ WEBSITE: [www.plyco.com](http://www.plyco.com) ■ PHONE: 800-558-5895

## East Coast Fasteners Wins Ninth Metal of Honor

This is getting to be a regular occurrence and that's a good thing. East Coast Fasteners is proud and excited about being recognized by the readers of *Metal Roofing Magazine* as one of the top suppliers in the industry for the ninth time.

It's satisfying to know we're keeping our customers happy. We're committed to providing the highest quality products and service to the commercial construction and post-frame industries with a growing variety of fasteners designed to deliver the best product for each specific project.

Introduced in 2019, East Coast Fasteners received our patent in 2020 for the Ply-Lo Driller design intended to

be more forgiving than other fasteners when installing at a slight angle. The Ply-Lo Driller is available in colors to match virtually any panel as a #10 fastener in lengths of 1", 1½", 2", 2½", and 3".

The Driller is getting great reviews from our customers. Its design drills quickly as well as minimizes dust and pigtails. The Driller has also been designed to reduce the likelihood of "walking," thereby reducing the chance of ruining your panel during installation.

East Coast Fasteners constantly tests and improves its products to ensure we are delivering the best products available in the market. This attention to detail provides the strongest and most effective building components for fastening wood,

aluminum, steel, roof deck, and plywood.

Another recent innovation from the company, introduced in 2018, is its 40-year Ply-Lo fastener, The Ply-Lo EXTREME, a fastener designed for extreme environments. Ply-Lo EXTREME has all the features and benefits of the original Ply-Lo and has a 40-year warranty. Ply-Lo EXTREME is available in #10, #12, and #14 diameters.

East Coast Fasteners has also upgraded the original Ply-Lo fastener—the Ply-Lo EXTENDED is the fastener designed exclusively for the post-frame industry and now has a 12-year warranty.

To find the best fastener or closure for your project, contact an East Coast/Plyco territory manager. **MOH**

## BUILDING CONNECTIONS

East Coast Fasteners produces durable, long lasting fasteners for all combinations of building materials.

- Quick Ship Program
- Extended Warranties
- Colors to match any rollformed steel
- High quality products for any application

East Coast Fasteners...**Building Connections** for the construction industry.



800.558.5895 ■ [www.plyco.com](http://www.plyco.com)

The FASTEST, SHARPEST, CLEANEST Drilling Fasteners Available!!  
Ply-Lo Extended • Ply-Lo Extreme • Ply-Lo Driller • Ply-Fast • Metalfast  
Stainless Steel • Ply-Lo Low Profile • Flashers • Closures • Wood Deck

2023 METAL OF HONOR WINNER

# Graber Post Buildings, Inc.

METAL OF HONOR AWARDS: 2 ■ WEBSITE: [www.graberpost.com](http://www.graberpost.com) ■ PHONE: 800-264-5013

Graber Post Buildings continues to be a leading material supplier for contractors and wholesalers across the Midwest, Southeast, Mid-Atlantic and Northeast portions of the United States. GPB has seen great success in the last century and has continued to make improvements to handle even more growth in the upcoming years. In the last two years, GPB has built a completely new facility for our truss and laminated column productions. This facility includes the latest equipment and technology available in the industry. This has helped us increase efficiency in production and keep our lead times as low as possible. This expansion also featured 6 buildings to house the lumber for dry storage. Graber Post also added a new



roll-former in 2019 for our Board and Batten metal panel. This has been a huge hit for the residential side of business and has offered our customers more options than just a standard ag style look.

In 2003 Glen Graber (founder of GPB) purchased a similar company to Graber Post in Versailles, Missouri, by the name of Martin Metal. Martin Metal has a very similar business strategy and does most of its business in the Midwest and

Southwest. Together Graber and Martin Metal cover a very wide footprint of the United States and over 85 years of experience in the metal manufacturing and post frame supply business. Each company has its own fleet of delivery trucks for timely and convenient yard deliveries.

Graber Post still operates by a practice that Glen started many years ago, offering the best product at a fair price and providing the best customer service possible. We plan to use this strategy for many years to come and we believe it will work. GPB is always open to new contractors and wholesalers to add to our dealer network. If you have any questions about becoming a partner of GPB, give us a call or visit us online. **MOH**

**Celebrating**  
**50**  
1973 - 2023  
**years**

**GRABER**  
**GPB**  
POST BUILDINGS, INC.

## YOUR ONE-STOP SHOP FOR ALL YOUR ROOFING & BUILDING NEEDS

**METAL OF HONOR  
2023**

**DEALER/INSTALLER OF:**  
**G.H.I.**  
OVERHEAD DOORS

TRUSSES | LUMBER  
WINDOWS | DOORS  
LAMINATED COLUMNS  
STANDING SEAM METAL  
METAL ROOFING &  
SIDING PANELS  
METAL TRIMS &  
COMPONENTS  
STONE COATED  
STEEL SHINGLES  
COMPLETE POST-FRAME  
KITS W/ DELIVERY  
& MUCH MORE!

**(800) 264-5013**

**WWW.GRABERPOST.COM**

7716 N. 900 E.  
Montgomery, IN 47558



2023 METAL OF HONOR WINNER

# Hixwood

METAL OF HONOR AWARDS: 2 ■ WEBSITE: [www.hixwood.com](http://www.hixwood.com) ■ PHONE: 715-644-0765 ■ FAX: 715-644-0994

## Get It Fast. Make It Last.

Your entire business depends on how fast you can get your metal products and get it built. The Hixwood goal is to help your business grow and that means placing your order accurately, and getting it to you within a day or two whenever we can.

## Massive Metal Supply

Hixwood stocks more metal than anyone in the region. You have 35+ metal colors to choose from plus metal options to meet your budget and specifications. Every project is different so we stock everything from metal trim and siding to metal roofing.

## Onsite Metal Fabrication

Need something that we don't stock? We have the industry's leading equipment and will get you what you need before the other guys can even get the order to their fabricators in another state.



## Experts Who Know Metal

Nothing is worse than trying to place an order with someone who doesn't understand the product. Metal is what we do! We'll place your order accurately and get you your products quickly so you can focus on your business. **MOH**



**Thank you  
to all readers**  
*for the nomination of the  
Metal of Honor award.*



715-644-0765 — Fax: 715-644-0994



*Hixwood has been a leading supplier for quality building materials since 1998. Contractors and homeowners alike have come to rely on our exceptional dedication to top quality building components. We have been recognized as industry leaders when we first introduced the Textured Super-Rib panel to the industry in 2006. Board & Batten and Seamless Siding in 2013. To add to our line of quality products we will be introducing the 26 ga. R-panel in April 2023!*

2023 METAL OF HONOR WINNER

# Levi's Building Components

METAL OF HONOR AWARDS: 3 ■ WEBSITE: [www.levisbuildingcomponents.com](http://www.levisbuildingcomponents.com) ■ PHONE: 877-897-7020

Levi's Building Components® began as a small operation in Bird-in-Hand, Pennsylvania. Founder Levi Fisher developed innovative solutions to common problems facing the metal roofing industry, such as the Snow Defender snow guards and the ReGrip™ screw originally made to replace failing nails.

Levi also developed innovative, time-saving and cost-effective methods for custom painting and color matching roofing fasteners. With a strong and well-established business, Levi's son, Steve Fisher, became the new owner and CEO and brought the company into a period of growth with a rapidly expanding catalog of products and a newly constructed, state-of-the-art facility in 2021.



Today, Levi's Building Components® products can be found on homes and buildings nationwide. Suppliers across the country trust its ability to deliver on consistent product quality, customer ser-

vice and quick shipping. With a large and continuously growing line of products, Levi's Building Components® is the one-stop shop for reliable metal roofing and post frame accessories. **MOH**



## WE HAVE INVENTORY!

Experience our industry leading quick ship service!  
Over 75% of our orders ship complete same or next day!

Popular Products Include:

FloVent



Fastgrip



Snow  
DEFENDER.



Call us today about becoming your preferred supplier!

(866) 520-3453 | [www.levisbuildingcomponents.com](http://www.levisbuildingcomponents.com)



2023 METAL OF HONOR WINNER

# Logan Stampings

METAL OF HONOR AWARDS: 6 ■ WEBSITE: [www.loganstampings.com](http://www.loganstampings.com) ■ PHONE: 547-722-3101

## Providing You With All of Your Precision Metal Products

For over 50 years, Logan Stampings has been providing the highest quality metal building components, clips, parts, and assemblies worldwide. We proudly combine our history in the industry with new technology to allow us the versatility to grow with the ever-changing needs of today's customers.

Our commitment to exceeding our customers' expectations is what makes us a leader in the metal stamping and fabrication industry.

With an impressive 170,000+ square feet of state-of-the-art equipped facilities, we supply metal building components to

everyone from the large metal building manufacturers to the independent, on-site roll-formers.

Logan Stampings manufactures roof clips and accessories for BPD, which offers a full line of clips for standing-seam (roll-formed) panels, including those produced by New Tech Machinery, Englert, Knudson, Quadro Pro, Ultra Seam, and Zimmerman Metals roll-forming machines.

We are very pleased to have been chosen once again as a Metal of Honor award recipient by the readers of *Metal Roofing Magazine*.

The employees of Logan Stampings believe that our success is a direct result

of our personalized service that we give to each and every client—something that can easily be taken for granted in today's fast-paced world. We are problem-solvers and take great pride in using our wealth of knowledge, cultivated over the past 50+ years, to satisfy each client's individual needs.

## Proud to Provide Material Manufactured in the USA

Logan Stampings believes in the importance of keeping materials manufactured in the United States. This value is and has always been a central focus of our company and our clients.

**MOH**



**METAL ROOFING MAGAZINE**  
**METAL OF HONOR 2023**

*Thank You*

**Supplying clips and accessories for the Metal Roofing industry!**

*From our entire team - Thank you for awarding us with the Metal of Honor!*

**LOGAN STAMPINGS**

**547-722-3101**  
**LoganStampings.com**

**LSI GROUP INC.**  
METAL BUILDING COMPONENTS

**ROOF HUGGER**

**bpd**

**LOGAN STAMPINGS**

2023 METAL OF HONOR WINNER

# Metal Rollforming Systems

METAL OF HONOR AWARDS: 2 ■ WEBSITE: [www.mrsrollform.com](http://www.mrsrollform.com) ■ PHONE: 888-284-6794

Metal Rollforming Systems (MRS) is proud and honored to receive our second Metal of Honor award. MRS has been designing, manufacturing, and selling roll formers and accessories since 1993. We constantly strive to create the best quality roll forming equipment possible. Metal Rollforming Systems aims to be your one-stop shop for all your roll forming needs, allowing you to save time and money when purchasing a roll former. Along with our complete selection of panel roll formers, we also specialize in custom trim profiles along with all the needed accessories to complete your metal panel needs.

As a leader in the light gauge panel roll forming market we continue to press

the boundaries of what is possible with cutting edge panel design and industry leading innovations. Some of our newer-to-market profiles include the Quad Rib, Board and Batten, and F&J trims. These have all generated great interest in the marketplace and have helped our customers continue to raise the bar and differentiate themselves.

We pride ourselves on helping our customers both before and after the sale. We believe this is a major reason why our customers and the industry continue to praise and commend us with awards like the Metal of Honor. Our customers' success is our success and our business is based largely on repeat customers and referrals. We are honored that our

customers speak so highly of us. We strive to make the best experience for our customers and to make them confident they've purchased the right roll former from the right company.

Metal Rollforming Systems has grown from a single man building roll formers to a 100-person crew. Our complete in-house design and production allows our team to keep precision control over each aspect of the manufacturing process. This assures that each roll former is done right and will be reliable for our customers for many years to come. From our family to yours, thank you for the honor of this award and for the privilege of serving the industry for over three decades! **MOH**



**Panel Rollformers**  
*Titan, Signature & Patriot*

**Trim Rollformers**  
*Single & Multi Profiles*

**Slitting Lines**  
*Stand Alone, Cut to Length, & Slit to Recoil*

**Decoilers, Upenders, Shears**  
*and much more!*

The Affordable Rollforming  
Equipment Manufacturer



A 30 YEAR  
HERITAGE



888.284.6794 | [www.mrsrollform.com](http://www.mrsrollform.com)  
[info@mrsrollform.com](mailto:info@mrsrollform.com)  
4511 N Freya St. | Spokane, WA 99217





2023 METAL OF HONOR WINNER

# MWI Components

METAL OF HONOR AWARDS: 16 ■ WEBSITE: [www.mwicomponents.com](http://www.mwicomponents.com) ■ PHONE: 800-360-6467

MWI Components is thrilled to receive the Metal of Honor award!

After another year in the post frame/metal roofing industry, our goal is to continue providing quality products to all types of builders—teaming with them as they tackle new projects requiring metal roofing.

We specialize in roofing accessories and ventilation products, such as decorative cupolas, Ridg-Vents®, Uni-Vent®, vented closures, sealants and retrofit products. Plus, within the last few years, we've started manufacturing foil insulation: Infinity Shield®, which has no seam on 6' and 8' rolls!

Uni-Vent® and Universal Ridge Clips offer the most convenient method for

venting standing seam and corrugated roofing panels. With Uni-Vent® II there is no need to be profile specific, since the product conforms to the rib panel. For those who prefer profile-specific systems, our UniVent® Pro-Series is available for 6" OC 7-rib, 11.66" OC 4-rib or 9" OC. Finally, our Uni-Vent® III provides the same conforming benefits as Uni-Vent® II, but rather than applying to the roof panel (as you would with Uni-Vent® II), this product is applied to the ridge (prior to fastening the ridge). Finally, our Universal Ridge Clip will provide assistance with standing seams by eliminating the need for "Z" closure installation.

Cupolas offer the perfect decoration for any metal roofing project. We offer

24", 36", 48", and 66" square cupolas along with 48" and 84" octagon cupolas (all models available with window or louvered sides).

MWI also has route trucks in many areas, so customers can conveniently combine products to reduce freight costs, inventory, and challenges.

Thanks to our outstanding customers, we have been able to support the industry for over 35 years while becoming a leading manufacturer/supplier of cupolas, Ridg-Vents®, steel & aluminum soffits, trim, horse stalls, Dutch doors, sliding doors & accessories, polycarbonate skylight panels, foil insulation and more.

Once again, thank you for awarding us with a 2023 Metal of Honor! **MOH**



## UNI-VENT® RIDGE VENTILATION

At MWI, we offer a variety of ridge ventilation options. Scan the QR code to download our literature!

### Contact Us:

800-360-6467  
[mwicomponents.com](http://mwicomponents.com)



2023 METAL OF HONOR WINNER

# rFOIL Insulation Products

METAL OF HONOR AWARDS: 1 ■ WEBSITE: [www.rfoil.com](http://www.rfoil.com) ■ PHONE: 800-837-8961

rFOIL Reflective Insulation has been a leading manufacturer of thermal insulation for the metal building and metal roofing markets for nearly 35 years. Manufactured by Covertech Inc., rFOIL has earned a reputation for quality, performance, and durability.

rFOIL Reflective insulation has grown in popularity for use in metal buildings and metal roofing systems across North America for its ability to control heat transfer and to help prevent interior condensation.

Metal building and metal roofing systems are notoriously difficult to insulate. In the summer, enormous amounts of heat radiate from the hot metal into the structure, often raising the interior tem-

peratures well above ambient outside air temperatures. This is the result of the sun making the metal extremely hot, much hotter than the outside air, and essentially becoming a radiator of this heat into the structure. In cold seasons, this interior heat is a challenge to contain as well.

The key to rFOIL's thermal performance is the reflective aluminum surface. Aluminum has outstanding thermal properties and reflects up to 96% of the heat that is radiating inward from the hot metal exterior. This dramatically reduces interior heat gain. Conventional mass insulations do virtually nothing to stop radiant heat gain.

In cold seasons, rFOIL also helps reduce heat loss, due to its low-emittance

properties. The low emittance of rFOIL makes it more difficult for heat to radiate away from its reflective surface, thereby helping to keep heat inside.

rFOIL Reflective insulation is composed of two highly reflective aluminum surfaces, and an inner core of high-strength bubble. The bubble core provides the added benefit of reducing interior condensation, by providing a thermal break between the exterior metal and the building interior. A white interior facing is also a popular option.

rFOIL would like to thank the readers of *Metal Roofing* for this Metal of Honor Award. We are honored by your support and confidence in our insulation products. **MOH**



## THE BEST WAY TO INSULATE METAL & POST FRAME BUILDINGS

• Residential Metal Roofing • Garages, Sheds & Carports • Pre-Engineered Steel Buildings • Post Frame / Pole Barns • Agricultural Buildings

### Benefits:

- Blocks 96% of Radiant Heat Transfer
- Prevents Interior Condensation
- Class 1/A Fire-Rated
- Unaffected by Humidity
- Will not Promote Mold and Mildew
- Easy to Install
- UV-Resistant
- Patented Product



888-887-3645 [www.rFOIL.com](http://www.rFOIL.com)

Manufactured by:  
**COVERTECH**



2023 METAL OF HONOR WINNER

# S-5!

METAL OF HONOR AWARDS: 13 ■ WEBSITE: [www.s-5.com](http://www.s-5.com) ■ PHONE: 888-825-3432

*The Right Way*™ is not just our slogan — it is our credo and rule of conduct. Having served the industry since 1992 as the original inventor of an all-new and distinctive product category, we have the knowledge, research, engineering, testing, production capability, ingenuity, and expertise to develop and manufacture our products like no other.

**Simple Solutions:** With 100+ issued patents and a track record of 30 years as the industry's leading provider of metal roof attachment technologies, S-5! is dedicated to offering permanent solutions for the life of the metal roof. It's our only business.

**Continuous Innovation:** S-5! continues to innovate new and better solutions and is in a constant improvement, invention/reinvention mode within the space we originally created.

**100% Made in the U.S.A.:** Made in our own automated facility, S-5! products are sold in 70+ countries and installed on 2.5 million metal roofs worldwide with never a single documented product or system failure.

**Certified Material; Certified Manufacturing:** Our manufacturing plant represents state-of-the-art equipment and automation, certified to ISO 9001-15 quality assurance standards. We

use only certified raw material and are regularly audited.

**Certified Testing:** We use only ISO 17025 accredited testing labs following strict ASTM standards. Accepted by the International Code Council, S-5! established the industry's testing protocols and has conducted 5,000 individual load tests on every conceivable metal roof profile in numerous gauges and materials.

**Warranties:** S-5! confidently stands behind its quality assurances with the industry's only lifetime product and performance warranties on all goods sold. **MOH**

## ColorGard®

Let us help you plan your next metal roof snow guard project.



Use our online calculator to get a complete bill of materials.



888.825.3432 | [www.S-5.com](http://www.S-5.com)

2023 METAL OF HONOR WINNER

# Triangle Fastener Corporation

METAL OF HONOR AWARDS: 19 ■ WEBSITE: [www.trianglefastener.com](http://www.trianglefastener.com) ■ PHONE: 800-486-1832

Triangle Fastener Corporation has been supplying a full line of fasteners, sealants, tools, and accessories for the commercial construction industry since 1977. From our 24 locations and 7 paint shops, we specialize in high-performance standard and specialty products used in a wide range of roofing applications.

We offer job site and technical support, inventory management, and delivery programs. Select from a wide array of popular commercial-grade products, including our high-performance TFC SPECIFIC™ brands.

Call us toll-free for more information: 800.486.1832. **MOH**

#### Corporate Office:

Triangle Fastener Corporation  
1925 Preble Avenue  
Pittsburgh, PA 15233

#### Phone:

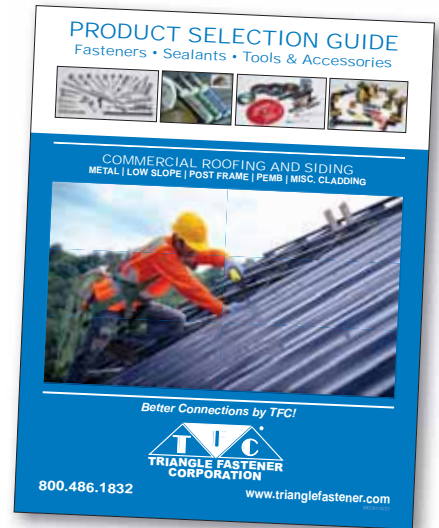
800.486.1832

#### Fax:

412.321.7838

#### Website:

[www.trianglefastener.com](http://www.trianglefastener.com)



## No ordinary post frame screws!



**PANEL-TITE**  
BURR-BUSTER

- Low-angle thread reduces backout and over-driving the washer
- Saw tooth thread reduces tapping torque
- Patented BURR-BUSTER® Point reduces burrs caused when piercing steel



Checkout the performance versus ordinary screws!

**TFC**  
TRIANGLE FASTENER CORPORATION  
[www.trianglefastener.com](http://www.trianglefastener.com)  
800.486.1832

**Call for free samples!**

We make connections better!



# Check Out Our Digital Magazine Websites

[www.ruralbuildermagazine.com](http://www.ruralbuildermagazine.com)

[www.framebuildingnews.com](http://www.framebuildingnews.com)

[www.readmetalroofing.com](http://www.readmetalroofing.com)

[www.rollformingmagazine.com](http://www.rollformingmagazine.com)

[www.garageshedcarportbuilder.com](http://www.garageshedcarportbuilder.com)

[www.roofingelements.com](http://www.roofingelements.com)



[RaytecLLC.com](http://RaytecLLC.com)

METAL PARTS THAT FIT

CUSTOM METAL  
FABRICATING

QUALITY  
METAL  
PRODUCTS

- SEAMLESS GUTTER ACCESSORIES
- ROOFING PRODUCTS
- STORAGE SHED TRIM

LASER CUTTING  
CNC PUNCHING  
NOTCHING  
SHEARING  
FORMING

**Hangfast**<sup>®</sup>

Gutter Hanger



**Hangtite**<sup>™</sup>

Gutter Hanger  
with Clip



**REAL**<sup>®</sup>

Gutter Cover



**FLASHING**

- Step
- Apron
- Roll



**Rezist**<sup>™</sup>



SERVING THE  
Seamless Gutter & Roofing Industry  
FOR OVER 40 YEARS

[RaytecLLC.com](http://RaytecLLC.com) | [Sales@RaytecLLC.com](mailto:Sales@RaytecLLC.com) | 877-800-2500

## NEW PRODUCTS



### Malco Products: Ergonomic Andy™ Snips

Malco Products, SBC, one of the nation's leading solution developers and manufacturers of a variety of high-quality tools for the building trades, has launched a new product within its popular Andy™ snips line, the lightweight and ergonomic Andy Aluminum Handled Offset Left Snips 12" (MC12L).

With this versatile tool, trade pros can make longer, tighter, higher-quality straight and left curve cuts in many types of materials, including sheet metal, metal roofing, aluminum, stainless steel, steel siding, and vinyl.

The MC12L Andy snips are built with incredibly strong, lightweight aluminum for ease of use and durability, and the ergonomic offset handle provides a safer and more comfortable angle for cutting to reduce hand fatigue.

A full 3" cutting length reduces the total number of cuts and repetitive motions, saving the user time and effort. The sharp bottom cutting jaw is constructed of investment-cast tool steel, which allows for starter holes as small as 1/2"; the upper cutting blade can be easily replaced every 20,000 cycles to extend its overall life.

"Andy snips are one of Malco's most popular product lines, so we are proud to continue building on this legacy of excellence by bringing this high-quality, new offset version to contractors," said Nancy Gunnerson, Malco's director of marketing. "Our team's innovative design of the MC12L meets the most rigorous standards of cut quality, length and ease of use."

[www.malcoproducts.com](http://www.malcoproducts.com)



### McElroy Metal Modern-Rib Panel

Modern-Rib from McElroy Metal combines the economics of an exposed fastener panel along with major ribs that simulate the aesthetics of standing seam panels. Modern-Rib adds beauty and sophisticated styling to residential roofs and post-frame structures with a 3/4" rib. It is available in Silicone Modified Polyester (SMP) as well as Sherwin-Williams Fluoropon

PVDF/Kynar 500® coatings. The 36" striated panel comes standard in 29-ga. Galvalume, but is also available in 26-ga. Galvalume and 29-ga. G-90 bare and G-100 painted, in lengths up to 48'.

[www.mcelroymetal.com](http://www.mcelroymetal.com)

### Coated Metals Group Natural Matte Colors

Coated Metals Group (CMG) has introduced a line of Natural Matte® paint finishes. Exclusive to CMG, Natural Matte® is a range of ultra-matte exterior finishes for metal roofing and siding. It uses microscopic light-distruptive technology to eliminate unwanted shine and glare without sacrificing color depth or finish durability.

Within the metal construction industry, building designers and homeowners have gravitated toward low gloss finishes to highlight contemporary and modern design. This new finish uses innovative paint technologies to offer a new benchmark for ultra-matte finish options, which enables Natural Matte® finished metal to be used in new environments, including those that have traditionally restricted the use of metal due to sheen, glare, and LRV ratings.

The new coating, which offers a delicate satin texture, has a 40-year finish warranty and a 30-year warranty against color fade.

[www.cmgmetals.com](http://www.cmgmetals.com)



Regular gloss product compared to Natural Matte.

### CAMO® Code-Compliant Structural Screws

National Nail's CAMO® brand has introduced a new line of high-performance structural screws. Certified IRC/IBC code compliant and rigorously third-party tested and certified by DrJ Engineering, CAMO Structural Screw applications include the deck substructure, internal framing, ledger and general construction.

The screws are engineered to start fast without pre-drilling, drive smooth, and hold strong.

All structural screws feature CAMO's proprietary PROTECH™ ULTRA 4 coating, a four-layer system for corrosion resistance and tested 2X longer than industry standards. The Ledger, Multi-ply and Truss screws also do double-duty, requiring fewer fasteners per job and less SKUs for dealers. All CAMO structural screws can be used for interior and exterior projects.

The CAMO Structural Screw product line includes Truss Screws, Multi-Ply Screws, Ledger Screws, Framing Screws, and Multi-Purpose Screws. In addition to CAMO's PROTECH ULTRA 4 Coating, Multi-Purpose Screws are available in hot-dip galvanized options for coastal applications.

[www.camofasteners.com](http://www.camofasteners.com) **MR**





# Tell 100,000 subscribers about your new product

**If your company has developed a new product for builders or contractors, email a new product announcement to one of the contacts listed below for possible publication in our business-to-business magazines.**

*Include a clear, high resolution image of the product (no logos or advertisements), along with a brief description of your product and the problems it solves.*

**Submission is not a guarantee of publication. We reserve the right to edit all submissions for content, length, and clarity.**



**Metal Roofing Magazine; Roofing Elements Magazine; Rollforming Magazine: Karen Knapstein – [karen@shieldwallmedia.com](mailto:karen@shieldwallmedia.com)**  
**Rural Builder; Frame Building News; Garage, Shed & Carport Builder: Rocky Landsverk – [rocky@shieldwallmedia.com](mailto:rocky@shieldwallmedia.com)**

**GET GUARANTEED PLACEMENT BY ADVERTISING: Missy Beyer – [missy@shieldwallmedia.com](mailto:missy@shieldwallmedia.com) • 920-216-3007**



# Top Off Their World with Style

Color of the Year 2023

By Linda Schmid

Paint and coating colors can seem like secondary considerations in the building process. Yet, they can be important to the client who lives or works in a space every day. Paint and coating manufacturers choose colors of the year that they believe reflect our cultural state of mind, the ideals to which we aspire, an expression of the collective soul if you will. This year's choices definitely seem a case in point.

After all of the uncertainty of the last couple of years, people seemed to turn to the outdoors looking for comfort and inspiration, hence the masses of people heading to parks of all kinds, not to mention all of the people who took up gardening and back yard projects.



AzkoNobel's Wild Wonder. PHOTO COURTESY OF AKZONOBEL

Hence, AzkoNobel's color of the year is Wild Wonder, which they describe as having "a glowing natural tone that connects us to nature and helps us feel better in our homes and in the world around us. It is based on the idea that, as people search for support, connection, inspiration and balance in their lives, they're diving into the wonders of the natural world to find it. The accompanying color palettes are Forest Hues, Raw Colors, Meadow Brights, and Seashore Tones.

Sherwin Williams has chosen Redend Point as their color of

the year. This earthy tone is warm, subtle and comforting, reminiscent of natural earth-scapes.

PPG's Color of the Year is Vining Ivy, a saturated and luxurious color, evocative of both deep forest greens and turquoise seas.

Behr's Blank Canvas is a warm and inviting neutral color with a lovely palette of colors to complement it.

Gentle Violet is one of Valspar's colors for 2023, a youthful color that embodies a coming together of natural and synthesized colors for a feeling of harmony and connectivity.

## PPG and the Art of Color Trending

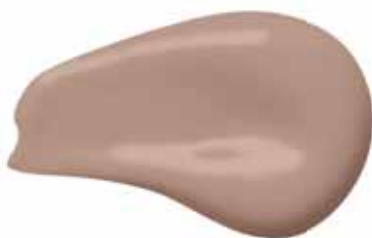
PPG lays great emphasis on colors because they have seen that it is important to the people who live and work in the buildings that are enveloped in these colors. There is a strong psychological aspect to the colors they offer.

PPG is involved in many industries: The company provides paints and coatings for different markets including automotive, agricultural, aerospace, consumer products, and construction applications, among others. This vast breadth of markets helps inform each market; no industry performs in a bubble.

Color experts look not only at micro-trends, or what is popular now and in the next couple of years, they also forecast what is going to be popular in 5 to 10 years, the macro-trends. Of course, most of the time people don't know why one color does nothing for them or why another color seems to resonate. They don't need to know why; they can just enjoy. However, the color experts could probably tell them why, because it's their job to know why.

They know because they look at what has happened in the recent past to understand what people are looking for today and what they are likely going to be looking for tomorrow. Does that sound a bit esoteric? Let's take a look at how they came up with their 2023 color forecasts.

They began with what had been happening culturally in the previous decade or so, 2010-2019 and found these themes: recession, reduction, social media, climate, me too, equality,



Sherwin Williams's Redend Point



PPG's Vining Ivy



Behr's Blank Canvas



Valspar's Gentle Violet



# LIVING COLOR

and crypto-currency. Then the psychology of how these things affected people come into play. For example, recession could give people a need for something soothing, yet minimal, while climate concerns could make them yearn for colors from nature that feel stable and comforting or refreshing and inspiring.

The next step was to develop themes from these analyses. They came up with three: Serenity, Origin, and Duality.

Serenity is about disenchantment with a chaotic world and the need for sanctuary and calm. It includes graceful, watery tones and warm neutrals. Think of it as a mental reset to something romantic, ethereal and escapist, or cool and echo friendly. In fact, Vining Ivy, PPG's Color of the Year, comes from this palette of colors, and is often used as an accent color with warm neutrals.

Origin colors are about a sense of wonder, a balance between the earth and the cosmic. It includes natural and mystical hues, fibrous earth-like materials, and raw, distressed-looking patinas. Much of Origin design looks quite ancient, or alternatively,

clean and contemporary like stone and marble.

Duality is a theme full of contrasts. It can be a blending of traditionalism and fantasy, bold and soft, real and “augmented.” It can be quite dramatic — “old school glamor for the modern age” or a playful blend of design through the decades for a new and contemporary creative. One thing is for sure: duality design is anything but boring!

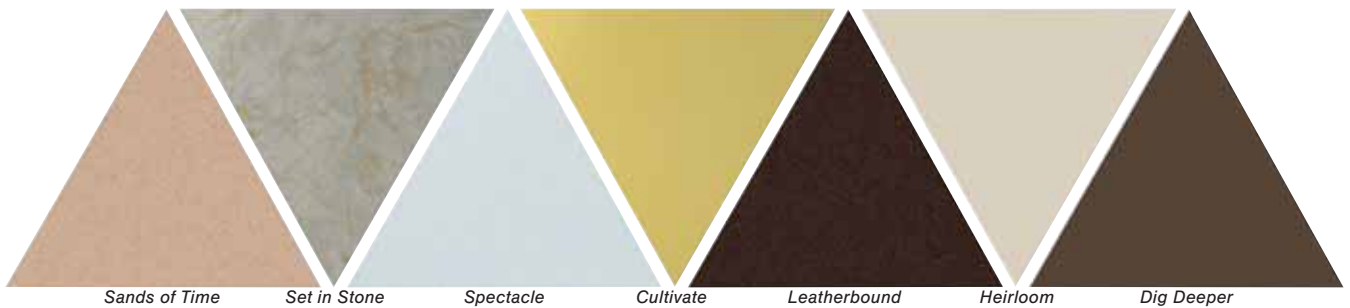
## Sherwin Williams' Perspective

Sherwin Williams has their own predictions for architectural color trends, based on facts about our collective experiences and influenced by abstract conceptualization. They find that color trend forecasting is “both science and art, serving dual purposes — to simultaneously inspire and inform.”

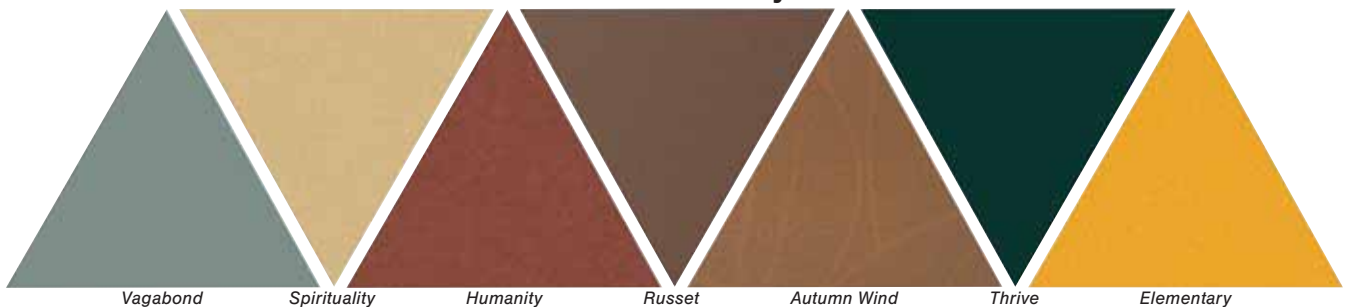
Sherwin Williams' 2023 color trends are based on macro-level trends that they see impacting contemporary culture: nostalgia, a sense of carpe diem, and the promise of the future.

A yearning for the past comes through in their “Pause

## Sherwin Williams' Pause and Rewind Collection



## Sherwin Williams' Push Play Collection



## Sherwin Williams' Fast Forward Collection





PH: 888-525-3002

WWW.EPDMCOATINGS.COM

**FIX ROOF LEAKS ONCE!**

The **ONLY** Liquid BUTYL Rubber In The World WITH THESE BENEFITS

Fully Stocked Ready To Ship

Before



After



**30Yr History Of Success**

- One Coat-Never a Primer needed
- Proprietary solvent-based system allows for unique chemical cross-linking to occur
- Applies directly to 90% of all roof types
- Great for pitch or flat roof
- Rust inhibitor-adhesion promotor and UV inhibitor
- Built in Mildewcides
- Withstands ponding water 365 days a year
- ASTM certified
- Cool Roof Rated Council
- Custom colors are available
- Call Today for Volume Pricing Over 1000 sq ft.



## LIVING COLOR

and Rewind” palette. These nostalgic colors feel warm and comforting after the uncertainty of the past few years.

The desire to live life to the fullest right here in the present is evoked in their “Push Play” collection. The rich nature-inspired colors intimate connectivity and wellness while bold colors seem to signify action.

Excitement and possibility are evoked in their “Fast Forward” colors, many of which feel as if they are changing right before your eyes, a parallel to a changing future. These colors “signify an open mind with soft purple chromas and regenerative browns.”

### Novagard On Color

You might think that color is unimportant in Novagard’s world; after all they make sealants, and sealants are supposed to be invisible to the end product, right?

Diane Petro, Senior Marketing Manager at Novagard explains that is not the case.

“Accurate color matching is a huge part of what makes any sealant invisible in the application. We offer a translucent sealant, and it is appropriate for many jobs, particularly when you have overlapping panels and precisely fitting parts. However, if there is a gap between panels, you need a solid-color sealant to close the gap and fill the shadow. Otherwise, you risk customer callbacks ‘because it looks like there’s a gap in there.’”

Color development is actually a big part of the service Novagard offers their customers as they work closely with them and manufacturer partners to understand what colors are trending and what new colors are needed.

Novagard is launching several new color collections for 2023, including a new line of hybrid sealants color matched to James Hardie siding. They are also launching color matched silicone and hybrid sealants for Pella and Andersen windows.

Full-color matching is possible for new colors with strong demand. Recently they introduced “Embellished Cream,” a custom color in the NovaBond line which matches the James Hardie siding being installed as part of rebranding/remodeling of 500+ Wawa convenience stores.

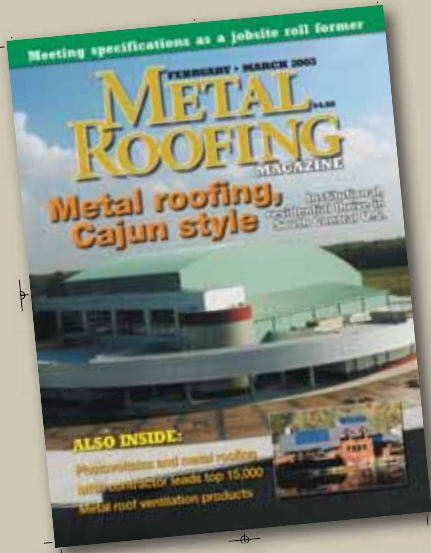
The top dozen or so colors represent the majority of the sales volume, probably 70-80%. The mix of popular colors have evolved over the last few years with less brown and taupe and more black and deep charcoal.

Something exciting is coming on the horizon, too.

“Looking ahead to 2024, we are planning to offer small-batch, on-demand color matching,” Petro said. **MR**







*Metal Roofing Magazine* was born as a supplement to *Rural Builder* magazine in 1999. A few more supplements were published in 2000. In 2001 it was elevated to a stand-alone magazine, and today it is over 20 years old.

If you have been involved in the PV scene in the last 20 years or would like to comment on the PV developments since 2003, we'd love to hear from you.

Contact Karen Knapstein, [karen@shieldwallmedia.com](mailto:karen@shieldwallmedia.com). In the meantime, enjoy this bit of metal roofing history!



Two different applications, two different styles of photovoltaics. A residence in Northern California sports an architecturally discreet 4-kilowatt thin-film laminate solar panel, made by Uni-Solar, on its standing seam metal roof; installation by DC Power. At left, a 340 kW crystalline module PV system, made by Solarex (now BP Solar), installed on the vaulted metal roof of the main swimming facility for the 1996 Atlanta Olympics, at the time the world's largest building-based PV system. DANIEL MARINO

(ABOVE), BP POWER PHOTOS

## Metal & Photovoltaics

### A marriage of materials, methods & markets

By Ryan Reed

**E**lectricity-generating solar cells, or photovoltaics, are everywhere these days, powering highway signs and call boxes, pocket calculators, and most of those satellites circling overhead.

While PVs have proven their mettle in isolated situations off the utility electrical grid, their use in generating power for consumers with grid access is

still rare. Solar power may become to the 21st century what oil was to the last, as some experts claim, but at present PVs account for far less than 1 percent of the nation's energy needs. [In 2023, PV contributes more than 3% of US energy needs. — Editor]

Yet a critical stage for photovoltaics has clearly arrived. It may be decades before solar can compete head-to-head



*Massive building-mounted arrays, such as this one in Germany, are becoming popular on commercial rooftops; unobtrusive systems on homes may be the wave of the future. SHELL SOLAR, UNI-SOLAR PHOTOS*

with oil, but political and market pressures building over the past few years are making PVs an economically viable option in many locations. It's an opportunity not just for solar designers and installers, but for design professionals, builders, and roofers as well.

PVs are going into grid-connected schools, public facilities, commercial buildings, and both luxury and modest homes – buildings whose owners can afford the up-front cost and can accept a long-term return on investment.

PVs can be made into window glazing, mounted on walls or awnings, but their most popular structural location is the rooftop. With appropriate mounting brackets and sealant, modules can go over any roof material. But many architects, solar designers, and installers are finding that standing seam metal is, for practical reasons, the best material support for their rooftop installations. There are even PV products designed specifically for standing seam panels.

As a recyclable and long-lasting material with proven thermal performance, metal has long appealed to those in the green building movement. But its primary appeal is to those who appreciate long-term life-cycle costing, and who are willing to put up with a higher up-front cost. Sound familiar? The same customers, whether residential or commercial, who are inclined to metal roofing are also candidates for PV installations.

According to the National Renewable Energy Laboratory, the cost of photovoltaic power per watt has dropped 87 percent since 1980. The lower price helps, but the biggest change has come from political and public pressures that have led to an array of state and local incentives, buy-down programs, and subsidies that can cut the initial cost of a system in half.

The incentives aren't just a function of environmental idealism. Utilities in some areas are desperate to shave their peak energy demand – usually reached in the hottest part

of summer, just when PVs are producing the most output. Even modest numbers of PVs hooked to the grid can make the difference between needing a new power station or not. Utilities across the country have mounted programs to buy "green" power at premium rates, and even to install PV systems to "donor" rooftops.

"Utilities are pushing solar with the immediate goal of not having to put in more coal and nuclear plants," says BP Solar's Jerry Paner, who has been promoting commercial PV projects large enough to affect such decisions.

Many states and localities, whether for political or practical reasons, have instituted buy-down programs and other incentives to encourage PV installations. Some of these pay for more than half the up-front cost. Grid-connected systems benefit from net metering, initiated by utilities over the past decade, which allows consumers to feed excess power back into the grid for credit. At the same time, doubts about the grid have led others to set up PV systems with batteries that give them both a back-up power source in case of a blackout and power not subject to the kind of wildly fluctuating prices suffered in Western states two years ago.

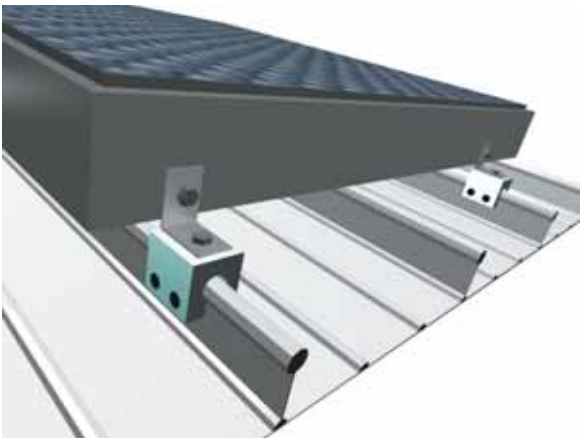
Both public agencies and commercial owners are often under pressure to design buildings with LEED ratings, a system developed by the US Green Building Council. Points are awarded to a building for its environmental impact. Supplying 5 percent or more of a building's needs with an alternative energy source such as solar is one way to rack up the LEED points.

Finally, the environmental benefits of solar power appeal to an increasing proportion of the American public, including homeowners. Consumers investigating PV systems using web-based calculators can get both cost calculations and the tons of greenhouse gas emissions a given system will keep out of the





This installation at Oberlin College, on a Zip-Rib roof manufacture by Merchant & Evans, was one of the first to use a rated clip – the S5!, designed specifically for that panel profile. Below: Several styles of the S5!, and artwork detailing the standing seam PV detail. BP SOLAR, METAL ROOF INNOVATIONS PHOTOS



atmosphere.

Public attitudes about the environment present another angle for commercial clients. Many companies, whether wineries or oil corporations, are finding benefit in projecting a “green” image. Photovoltaics are perhaps the flashiest way to demonstrate a commitment to the environment: let’s face it, a solar-powered gas station makes for better public relations than installing more insulation or energy-saving light fixtures, even if the power savings are the same.

### Up On The Roof

Until recently, the high cost of PVs has dictated that they be used at utmost efficiency: south-facing, tilted at 20-30 degrees (depending on the latitude), and adjusted seasonally. This made field arrays, often fitted with tracking devices, the preferred way of mounting the modules. But with lower cost, losing a

few percentage points in efficiency doesn’t loom as large. Most roofs that are either flat or basically south-facing are now candidates for solar installations. Unlike field arrays, rooftop PVs don’t take up real estate, they’re relatively secure from vandalism or damage, and don’t block any views. Rooftop mounting can help lower overall system costs.


But putting PVs on rooftops brings up both aesthetic and practical issues. Photovoltaic systems are generally warranted for 20 to 25 years, and may well last twice that long; rooftops are often covered with materials that need replacing much sooner. Removing modules to reroof isn’t difficult, but it certainly adds to the costs of reroofing and the potential for damage.

More importantly, modules installed on racks over most materials require penetrations to tie them into the framing. This means careful detailing, additional maintenance, and a greater likelihood of leaks. “Beyond the first cost, the idea of roof penetrations is a non-starter for a lot of architects,” notes Paner.

Aesthetic issues also come up. The standard method of mounting PVs on pitched roofs has been to build large metal or wood frames, bolted to the roof, that float above or sit on the roofing material. In some cases, frames have been inset into the roofing material, but at additional expense.


**SNOWTITAN®**  
**SPANS THE DISTANCE**  
**SNOW RETENTION FOR**  
**LOW-SLOPE ROOFS & WIDE SPANS**


Handles up to 48" spans



**PATENTED NON-PENETRATING SLIDING-PIN CLAMPS**


Pins apply equal pressure with just a single fastener





**ONE-OF-A-KIND STRONG CLAMPING CLAW**

No assembly, lower labor, fewer parts



SNAP IN ICE FLAGS

**ACECLAMP®**  
 Innovative Roofing Solutions™

Orders: 860-773-4144  
[www.AceClamp.com](http://www.AceClamp.com)



*At far right, installers field-laminate the thin-film PV material onto a metal roofing panel before its installation as part of a metal roof. The material works as well on structural panels (on awnings at the Mendoza Elementary School, Imperial Beach, Calif., left) as on architectural panels (Top: on the Nature Conservancy's Conservation Learning Center near Orlando, Fla.). TOP AND TOP RIGHT, UNI-SOLAR; RIGHT: GEORGE KOTT/CHROMA*

In either case, the geometric grid of PVs presents a sharp contrast to the textured, organic aesthetic of shakes, tile, or shingles. Over the years, PV manufacturers have tried to make modules that look like traditional roofing materials to minimize the aesthetic clash. There are now several PV materials that mimic asphalt shingles, slate, or flat tiles. But the stylistic range is limited, and the shinier PV surface never really blends in with the organic materials. The products tend to be more expensive than modules as well, and sometimes require considerable wiring in the attic space below.

## Metal Roofing & PVs

There are a number of practical and aesthetic issues that make standing seam metal the ideal rooftop for mounting PVs. Racks of modules can be clamped firmly to the seams without creating penetrations. With an engineered product such as Metal Roof Innovations' S-5!, designed for snow fences and other roof attachments, the connection can meet specific wind uplift and load ratings.

"Metal is simply the best substrate for photovoltaic installations," says Paner. Installers have used various arrangements of hat channel to mount racks on metal, but direct clamping is also possible. Making the connection with a rated clamp designed for the

specific metal profile, he says, helps solve liability issues that can arise on large projects.

The markets for metal roofing and PVs clearly overlap, says Paner. Most PV customers plan to own their buildings for a long time. That's why public agencies, schools and universities, the military, and well-heeled corporations are ideal. And that's the same criteria for clients who benefit most from premium metal roofs.

Standing seam roofing also smooths the aesthetic clash of PVs with traditional roofing materials. The geometric patterns of PVs simply look more at home on the vertical seams of metal than bolted over tile or shake.

## PVs and Metal – The BIPV Option

There are two basic kinds of PV modules, monocrystalline and polycrystalline, and they are made by dozens of companies worldwide. They vary by price and efficiency, but both types require a metal frame with a plate glass covering. But there's another kind of photovoltaic material developed in recent years — and it's even more preferential to metal. Triple junction thin-film amorphous silicon photovoltaics, a proprietary

technology of Michigan-based Uni-Solar, use layers of silicon deposited on a thin sheet of stainless steel to create a flexible membrane. The resulting product is far less efficient than crystal modules, and requires greater area to produce the same wattage, but is less expensive to manufacture.

Uni-Solar has used the lightweight, flexible material to make products such as roll-out battery rechargers. They've also formed it into roofing materials, including shingle-style sheets and tiles. It hopes eventually to make the material into an independent, TPO-style roofing material.

But its most practical current rooftop use is simply laminated to a standing seam metal roofing panel. Created in widths to fit neatly into a 16-in. metal pan, the material can be installed by a roofer and wired through the ridgcap, with no penetrations for mounting or wiring.

Uni-Solar first bought metal panels and factory-bonded the PV material to them. This meant limited panel lengths, long waits, and high freight costs. The company then developed a peel-and-stick adhesive backing for the material. This allowed panels to be delivered to or fabricated on site, field-laminated with the PV material by company-trained



installers, then installed on the roof, as the roof, by a roofing contractor.

Some installers found that the material slid down slope on hot days; the company began recommending fastening the material to the pan at the top edge with a few screws under the ridgecap. The slippage raised questions about the material's long-term adhesion. Although Uni-Solar has stuck by its 20-year adhesion warranty, it is planning to switch to a different adhesive, currently undergoing testing.

Adhered to a roofing pan, the material now becomes what is known as a building-integrated PV, or BIPV, as opposed to a building-applied PV such as the modules. BIPVs are part of the building envelope itself, and include thin-film (translucent) PV window and skylight glazing, modules used as awnings, and PVs made into roofing materials such as shingles or tiles.

Since BIPVs are part of the building membrane, the PV is doing double-duty as part of the building — in theory allowing for cost savings in the total assembly. In the case of the membrane adhered to a metal roof, the laminate eliminates the need for racks, clamps, and a lot of the rooftop wiring.

The other advantage of BIPVs is aesthetic. The laminate isn't invisible (unless the metal roofing is very dark blue), but it arguably blends into different architectural aesthetic with ease. As an essentially untextured, glossy patch of color, it is well suited to vertical seam metal.

Setting the PV laminate against crystalline modules makes for an apples-to-oranges comparison. The modules are much more efficient, and so require less space per watt; the laminate is less expensive, though not necessarily cheaper per rated watt. Crystal panels have been tested against hail up to 1-in., but the glass is still breakable; the flexible laminate won't shatter, but the system can still be damaged by large enough objects. The triple-junction laminate performs well in low-light situations and even partial shade, and also retains efficiency

at high temperatures; crystal modules lose efficiency in other situations.

It's tempting to view the two types of PVs as ideal suited to different applications. On lower-sloped buildings, modules won't prompt the aesthetic concerns they can on some pitched roofs. With no attic space to dissipate heat gain, shade-creating panels can boost the building's thermal performance in cooling climates.

On sloped roofs, especially residences, the sleek look of the laminate may be more suitable than clamped-on modules, and the impact of the dark material on the metal roof is minimized over a vented attic. And no glass means no complaints about glare.

But in fact both styles of PVs have been used in either situation, usually for reasons specific to that installation. Some smaller roofs, for instance, may need the higher efficiency of crystalline modules to achieve a desired kilowatt output.

On the other hand, some low-slope roofs may need the qualities of the laminate. At San Francisco International Airport, solar designer Tibor Fischl of Occidental, Calif.-based Renewable Energy Resources used the laminate on metal panels that were then mounted, module-style, on a built-up roof. "The airport was concerned about the reflection off glass modules disturbing pilots," says Fischl. The material's performance in low-light situations also seemed appropriate for the often fog-bound locale.

Fischl also used laminate on metal panels mounted on a flat roof for a custom home across the Bay in Oakland. The concern was primarily aesthetics and reducing glare for the hillside dwellers above the home. Fischl created what he calls a "piano" layout of standing seam metal panels across the multiple surfaces of the flat roof, resulting in a unique hybrid roof of metal and ballasted membrane.

Some module panels are finding their way onto metal roofs through a product designed specifically for flat roofs. Powerlight Solar Electric Systems, based in Berkeley, Calif., buys crystalline PVs from a variety of sources, then laminates them onto modular insulation boards. These squares interlock along their slotted edges, and can be placed on flat membrane roofs and held down with ballast or edge fasteners.

The system was also used successfully on an industrial metal building topped with a ribbed panel. When the Hayward Lumber Company began planning a new truss manufacturing plant in Santa Maria, Calif., it decided to build a LEED-rated plant powered entirely by PVs. The architect specified 14,000 sq. ft. of Powerlight's insulated PowerGuard PVs to go over the building's R-panel roof in order to cut the cost of insulation, since the PVs would insulate the roof from above. A special perimeter mounting system (with penetrations sealed with butyl tape) was developed to tie the panels to the purlins.

**VS-150**

METAL OF HONOR 2003

- 1" & 1-1/2" "Mech Lock" Standing Seam
- Snap Lock Panels & more!
- Quick and Easy profile changeover

Our most versatile, multiple profile machine.....forming seven 1" and 1-1/2" profiles.

**ROLLFORMER**

CHANGING THE SHAPE OF METAL

Ph: 215.997.2511 • Fx: 215.997.5544 • [www.rollformerllc.com](http://www.rollformerllc.com)  
Email John Dumke - [jdumke@rollformerllc.com](mailto:jdumke@rollformerllc.com)

1" & 1-1/2"  
STANDING SEAM



### Whose business is this, anyway?

Few in the metal roofing industry have shown much excitement over photovoltaics, or metal's fine prospects in that market, and it's easy to see why: the volume is still miniscule. If it's just a matter of metal companies supplying someone else with material, there isn't much to even talk about.

But there are some who have visions of marketing metal roofing and PVs together. Paula Grider, a sales rep for McElroy Metal in Southern California, has been including an introduction to building-integrated PVs in the regular metal roofing seminars she gives for architects. She's had some success. "I'm helping one architect get a platinum LEED rating by using PVs and metal," she says.

Dan Perkins, a metal roofer from Michigan's Upper Peninsula, sees small-scale systems as an opportunity for reroofing contractors, including job-site roll formers. "For a lot of the metal roofs you sell, you could price out a PV system at the same time." With installation a major cost of roofing, and the laminate easily applied before installation, the homeowner could see a window of opportunity to put up both a new roof and a new power system.

That's exactly the way it's working for some installers, particularly those selling small systems. "About two-thirds of our customers come to us," says Joseph Marino of DC Power, a Uni-Solar distributor in Leightonville, Calif. "One third, the roofer finds an interested customer, sells a metal roof, and gets us to come on site and laminate the materials."

Roofers are supposed to install roofing, not PV systems, but BIPVs blur the boundaries. With small-scale systems, it may become tempting for roofers to dabble in solar design and electrical work without appropriate training — a prospect that appalls solar contractors. "PV systems need experienced designers, integrators, and electricians," says Fischl. He's seen projects where an architect's aesthetic principles trumped the fundamentals of glancing the electrical system, resulting in an unworkable mess. "You can't just put odd numbers of modules wherever you want," says Fischl. "Architects who design without a solar consultant should be spanked."

On the other hand, roofers need to be in the mix as well. Neither electricians nor PV installers are as well versed in waterproofing, and are more likely to rely on tubefuls of caulk to keep a roof from leaking. One Sacramento architect was



*Tibor Fischl of Renewable Energy Resources used standing seam panels laminated with PV material on a flat ballasted roof in Oakland.*  
PHOTOS © RENEWABLE ENERGY RESOURCES

shocked to find a PV laminate adhered to a metal roof with the added — and unwanted — help of screws around its perimeter. Needless to say, the assembly leaked badly. "PV guys generally don't want to mess with roofing," notes Perkins, "and they shouldn't."

There's an ongoing battle in California as the electricians' union is trying to assert authority over PV installations. "Everyone wants control of the work," says Scott Womack of Powerlight. "You need electricians because these are electrical systems, and they need to do all the wiring after installation. But they aren't set up to use cranes, offload materials, and detail roofing." He considers his company's product a roofing material, and has had to fight to have roofers install it.

In the meantime, the opportunity in photovoltaics keeps growing. Commercial installations remain the most promising for metal roofers, with the economies of scale making PV systems viable in many settings and with metal an accepted material in that market.

As for the residential market, California's Local Government Commission reports that nearly 20 homebuilders in the state are now providing PV options in new subdivisions. The home models range from entry-level to luxury, and the PV systems add as little as \$11,000 to the bottom line. But few if any of these builders are offering homes with metal roofs — the most sensible choice for PVs.

Which may call for a bit of education.

**MR**



# BUSINESS CONNECTIONS

**Productive Trim Solutions**



**Variobend**  
USA

**SLINET**  
RECO machines

**Hershey's METAL MEISTER LLC**

877-289-3030  
info@hersheysmm.com

METAL OF HONOR 2023

**Everlast Metals**

**ROOF AND WALL SYSTEMS**



ASL NS  
SSL DL

**CONTACT EVERLAST METALS FOR QUICK SERVICE ON SLIT COIL, FLAT SHEETS AND ALL OF YOUR EXTERIOR METAL BUILDING COMPONENT NEEDS.**

**OFFERING:**

- Heavy Gauge Painted Steel or Aluminum
- Solid or Vented FP & RP Panels
- Double Folder Capabilities for Custom Trim or Hard to Find Wall Panels
- Up to 26 Standard Fluoropon® Colors Available
- Quick Turn Around for Slit Coil
- Ready to Ship Fluoropon® and Polyester Aluminum Flat Sheets
- Eight Concealed Fastener Standing Seam Profiles

**PLANT LOCATIONS:**

Lebanon, PA 10 Enterprise Court  
Bridgton, ME 24 JR Mains Drive

FOR MORE INFORMATION CALL: 800-418-5057 OR VISIT US AT [WWW.EVERLASTMETALS.COM](http://WWW.EVERLASTMETALS.COM)

METAL OF HONOR 2023

**smartbuild systems**

THE COMPLETE DESIGN SOFTWARE FOR POST FRAME AND ALL METAL BUILDINGS!

[SmartBuildSystems.com](http://SmartBuildSystems.com)  
303.579.6277

METAL OF HONOR 2023

**I BEAM SLIDING DOORS**

MADE IN USA

**DOORS THAT WORK!**

960 E Cemetery Ave, Chenoa, IL 61726  
815-945-3667 • [ibeamdoor.com](http://ibeamdoor.com)  
ibeamdoor@gmail.com



Manufacturers of Residential & Commercial Garage Doors



**KEYMAR MFG.**

Arthur, IL. 61911 sales@keymar.net 217.543.2828

**WE ADD THE VALUE TO THE METAL**

**MARION MANUFACTURING**



- Automation Systems
- Metal Construction Rollformers
- Coil Processing
- Forming & Fabrication
- Recondition Existing Machines

620-382-3751  
[www.marionmanufacturing.com](http://www.marionmanufacturing.com)

METAL OF HONOR 2023

**UNITED STEEL SUPPLY**

STEEL PRODUCTS FOR THE METAL ROOFING & METAL BUILDING INDUSTRY

Understanding Superior Service



512-263-0954 • [unitedsteelsupply.com](http://unitedsteelsupply.com)

**PSI Green Post™**  
Planet Saver Industries

THE MOST AFFORDABLE, ALL-IN-ONE SOLUTION FOR IN-GROUND POST DECAY AND UPLIFT RESTRAINT

P (610) 377-3270  
[www.planetsaverind.com](http://www.planetsaverind.com)



Made in the USA

# BUSINESS CONNECTIONS



## Strength in all Seasons

Since 1951, Plyco has stood by you and by their products. Plyco offers a complete line of entry doors that surpass building codes and customer expectations.

**Build Plyco Strong.**

**PLYCO**

800.558.5895 • [www.plyco.com](http://www.plyco.com)



## Radiant Floor Heat!

- Warm, Silent & Efficient
- Hot Water or Electric
- Tankless Hot Water
- Slabs
- Wood Floors
- Geothermal
- Wood Boilers

935 N. 275 W. Suite B • Angola, IN 46703  
**See us at [www.indianawarmfloors.com](http://www.indianawarmfloors.com)**  
 260-668-8836 • 800-700-8830



## DMI = BUILDING INVESTMENT PROTECTION

**Let DMI complete your building project with Code Approved & Warrantied:**

HW & PANCAKE FASTENERS • ANCHORS • PIPE FLASHINGS  
 REFLECTIVE INSULATION • POLYCARBONATE PANELS  
 SOLID & VENTED FOAM CLOSURES

[www.directmetalsinc.com](http://www.directmetalsinc.com) 855-800-8878



## LEVI'S BUILDING COMPONENTS

**Did you know...**

Currently over 75% of our orders are shipped complete same or next day!

If service matters, call (877) 897-7020 or visit [www.levisbuildingcomponents.com](http://www.levisbuildingcomponents.com) today for the Levi's experience!



## Acu-Form Roll Forming Equipment

### MANUFACTURER OF ROLL FORMING EQUIPMENT

PHONE: (330) 674-4003      EMAIL: [WAYNE@ACU-FORM.COM](mailto:WAYNE@ACU-FORM.COM)  
 FAX: (330) 674-4035      WEBSITE: [ACUFORMEQUIPMENT.COM](http://ACUFORMEQUIPMENT.COM)



## TAKE THE GUESSING OUT OF THE INSTALLATION.

Will the pipe flashing you have handle the correct pitch?

The NEW and IMPROVED Master Flash® Roof Pitch Data Calculator  
 From the largest to the smallest Pipe Boots Available

<https://rpc.aztecwasher.com>



## PREMIUM QUALITY ROLLFORMING MACHINERY

**ASC MACHINE TOOLS, INC. MADE IN THE USA EST. 1949**

PANEL ROLLFORMER      PURLIN LINES  
 TRIM ROLLFORMER      DECKING LINES  
 SLITTING LINES      CHANNEL LINES

[WWW.ASCMT.COM](http://WWW.ASCMT.COM) TEL: (509) 534-6600



## Golden Rule FASTENERS

### QUALITY PRODUCTS COMPETITIVE PRICES & MOST ORDERS SHIP THE SAME DAY

- Screws • Closures • Ridge Vent
- Pipe Flashings • Butyl Tape • And much more!

Ph: (334) 283-4030 - FAX (334) 283-4032  
[info@goldenrulefastenersinc.com](mailto:info@goldenrulefastenersinc.com) - [www.goldenrulefastenersinc.com](http://www.goldenrulefastenersinc.com)



**WRAP THEIR BUILDING UP WITH WARMTH!** **NEW!!!**



**FAST • EASY • LOW COST**

**RetrofitClip**

www.retrofitclip.com • retrofitclip@hotmail.com  
1-800-431-9661 • Manitoba, Canada

**FASTER THAN EVER**



**SAFE-WAY GARAGE DOORS**

CALL US TODAY!  
**(877) 775-1670**  
SAFEWAYDOOR.COM



**OUR LEAD TIMES WILL BLOW YOU AWAY!**

Pre-Cut Rollformers  
Post-Cut Rollformers  
Trim Folders  
Trim Rollformers  
Slit & Recoil Lines  
Controls

**Your Single Source Equipment Provider**



THE BRADBURY GROUP

1.620.345.6394  
bradburygroup.com





**4th ANNUAL Construction Rollforming Show**

**SEPTEMBER 27-28, 2023**

Duke Energy Center, Cincinnati, OH

**FOR MORE INFORMATION CONTACT GARY REICHERT:**  
gary@shieldwallmedia.com • 715-252-6360



**DELIVERANCE**  
ANTI-SHOCK SAFETY HAMMERS  
"TOUCHLESS"

**ANTI-SHOCK SAFETY HAMMERS**

Drive Nails & Spikes Faster!  
Reduce Repetitive Use Injuries

www.DeliverancePoweredSafetyHammers.com

**DID YOU KNOW?**

It costs less to buy a Business Card ad than it does to have cards printed.

We even give your "cards" to more than 40,000 potential customers.



**FOR MORE INFO CONTACT MISSY BEYER:**  
missy@shieldwallmedia.com • 920-216-3007

METAL ROOFING Rollforming Magazine Rural Builder GARAGE • BIRD • HARBOR BUILDER  
FRAMEBUILDING S&W ROOFING ELEMENTS Metal Builder

**RECOILING CALL. CUT. DONE.**

**METAL EXTERIORS**



• Precision slitting  
• Custom blanking  
• 36 color options  
• 26 gauge steel

WeatherXL

CALL US: 419-896-2200 metalexteriors.com

## Reibus Adds Red Metals to Digital Marketplace

Reibus International, the independent digital marketplace for industrial metals, has announced the expansion of its product offering to include red metals — copper, brass, and bronze — which are key ingredients in the electrical, metal roofing, and pipe manufacturing processes. In a recent report by S&P Global, copper demand alone is projected to nearly double by 2035, and market opportunities are emerging for copper product recycling.

“Red metals, especially copper, are in high demand, and current market conditions make it very difficult to locate and purchase inventory,” said John Armstrong, founder and CEO of Reibus. “This product expansion will enable global manufacturers and service centers to buy, sell, finance and transport copper, brass and bronze, reducing supply chain friction and improving cash flow.”

Reibus helps buyers and sellers navigate challenges and opportunities created by supply chain and geopolitical volatility in industrial metals. Founded in 2018, thousands of companies rely on Reibus to buy and sell materials, improve liquidity and cash flow, and maximize market share.

## Mill Steel Offering Stainless Steel, Aluminum Products

Mill Steel Co., one of the nation’s largest distributors of flat-rolled carbon steel, has expanded into the flat-rolled stainless steel and aluminum metal markets with the acquisition of Cleveland Metal Exchange (CME) and Chicago Stainless Metal Exchange. This represents the largest acquisition to date for Mill Steel Co. The entire CME team is joining Mill Steel’s team of carbon flat-rolled specialists.

A full line of stainless steel and aluminum products is now available through the Mill Steel Stainless and Aluminum division led by former CME CEO Randy Horvat and President Jeff Haas.

“We are thrilled to be entering the

## In Memoriam: Scott Kriner

Scott A. Kriner, 63, of Macungie, died January 26, 2023 at South Mountain Memory Care, Emmaus, Pennsylvania. He was the husband of Natalie R. “Lee Ann” (Ryba) Kriner to whom he was married 36 years.

Born in Allentown, September 13, 1959, Scott was the son of Robert A. Kriner of Allentown and the late LaRue V. (Ritter) Kriner. He earned a Bachelor’s Degree in Metallurgical Engineering and a Masters of Engineering both from Lehigh University. Scott owned Green Metal Consulting LLC in Macungie from 2009-2020. Prior to that, he was a technical consultant for the Metal Construction Association and the former Bethlehem Steel Corp.

Active in the life of his church, Scott was a member of Jordan United Church of Christ, Allentown, serving two terms as President of the Consistory and Festival Committee Chairman for 20 years. Scott was a hardworking, loyal and caring man with a great sense of humor. He always put his family first. He has left a positive impact on everyone he had the pleasure of knowing. His dedication to raising funds to fight this terrible disease is beyond admirable. Scott was an amazing musician. He enjoyed playing drums, and especially the marimba. Scott was a lifelong fan of The Three Stooges and always entertained those who had the pleasure of his company with his large repertoire of jokes. His laughter and contagious smile will be missed by all.

stainless and aluminum industry. This was an easy decision made by our customers and supports our plans for continued growth. I have the utmost respect for the CME team and confidence in our combined efforts to deliver a superior customer experience,” said Pam Heglund, CEO of Mill Steel.

Mill Steel plans to leverage its processing footprint and dedicated carrier network along with CME’s extensive supply chain to bring competitively priced aluminum and stainless products to market.



## Triangle Fastener Corp. Launches New Website

Triangle Fastener Corporation has launched its new website, [www.trianglefastener.com](http://www.trianglefastener.com). A new format provides easy access to product information for the metal roofing, flat roofing, post frame, and commercial/

drywall industries.

New feature updates include:

- Updated dropdown navigation to include more products
- Extensive technical information and installation tips for a variety of fastening systems
- New search tool for faster navigation
- View, download, email, or print product information via .pdf format
- Product videos.

Triangle Fastener offers standard and specialty fasteners, sealants, flashings, and tools for metal building, metal roofing, low slope roofing, steel decking, steel framing, and miscellaneous cladding materials. The company has 24 locations and provides technical assistance and an inventory management program.

## New Guide Helps Installers With Solar Grant Applications

As part of its mission to help people go solar, national nonprofit Solar United Neighbors (SUN) has released a new guide to help farmers and rural small business owners apply for a key federal grant and loan. This will make it easier for solar installers to guide them through the process of installing solar energy at their property. The comprehensive guide takes applicants step-by-step through the Rural Energy for America Program



(REAP) application process.

“It’s a great time for farms or rural small businesses to go solar,” said Anya Schoolman, Solar United Neighbors Executive Director. “We’re excited to offer this first-of-its-kind guide to help installers guide customers through the process.”

REAP started in 2002 as part of the federal Farm Bill. The U.S. Department of Agriculture (USDA) Office of Rural Development administers this grant and loan program. The program is designed to help farmers and rural small businesses access renewable energy and energy efficiency technologies.

The REAP program has been so popular that funding for the grants has not been able to meet the demand. The Inflation Reduction Act, passed last year, addresses this challenge. It quadruples REAP funding over the next ten years.

“Going solar eight years ago is one of the best decisions I have made since I started farming,” said Art Thicke of Enchanted Meadows dairy farm in LaCrescent, Minnesota. “We have enough solar panels to produce the electricity we use so our energy costs are fixed. When energy prices go up we don’t notice. Farmers looking to control costs and increase sustainability should take advantage of REAP and other programs to go solar.”

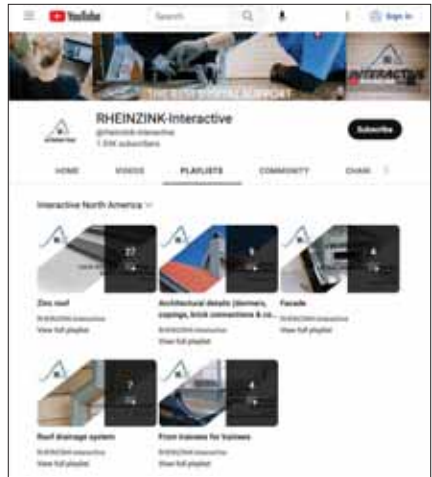
Farmers and rural small business owners can receive loan guarantees of up to 75% of total eligible project costs through REAP. They can receive grants for up to 40% of the total project cost.

Solar United Neighbors has helped more than a dozen applicants apply for a REAP grant or loan.

The USDA accepts applications twice a year. The first deadline is March 31. The second is October 31.

Solar United Neighbors is a nonprofit organization that works nationwide to represent the needs and interests of solar owners and supporters. Solar co-ops are part of the organization’s mission to create a new energy system with rooftop solar at the cornerstone. Solar United Neighbors holds events and education

programs to help people become informed solar consumers, maximize the value of their solar investment, and advocate for fair solar policies.



**RHEINZINK Offers Digital Training, Continuing Education For Working With Zinc**

RHEINZINK-Interactive offers the largest free, digital training library for tradespeople working with architectural zinc. Whether in the shop or in the field, more than 50 videos for English speakers in the North American market can be conveniently accessed through YouTube (<https://bit.ly/ZincRHEIN>).

Showcasing and sharing best practices, the North American video tutorials are organized by application categories: façade and wall cladding systems, zinc roofs, roof drainage and gutters, and architectural details such as dormers, coping and chimney cladding. An additional playlist features videos “from trainees for trainees.” Many of the videos provide step-by-step instructions with downloadable templates and are suitable for a wide range of experienced professionals. An emoji of a flexed bicep indicates the difficulty level with one emoji indicating beginner content and up to three emojis indicating highly complex content.

**EagleView Builds on Recent Launch of EagleView Cloud**

EagleView, a leading provider of aerial imagery, data, and analytics announces

the expansion of its EagleView Cloud offering to all customers following a successful launch to Government customers. EagleView Cloud for enterprise is a one-stop shop for customers who want access to high-quality and frequently captured aerial imagery that can be used to improve their capacity to make data-driven decisions.

“With EagleView Cloud for enterprise and our innovative, patented capture technologies, we are advancing our capabilities to provide customers and the market with a platform and data that meets their needs,” said Chris Jurasek, EagleView’s Chief Executive Officer. “This is an exciting time for us here as we continue to push the envelope in geospatial and aerial imagery innovation.”

In addition to expanded availability in roofing, solar, insurance, infrastructure and other commercial markets, EagleView Cloud will now cover more than 94% of the US population. This includes 1”, 3” and 6” image capture over more urban areas flown as frequently as 2x per year. With the inclusion of more frequent and more distributed images, EagleView reaffirms its position as the leader and industry standard for customers who need property-specific imagery and data.

These upgrades enable process improvements across multiple industries, such as:

- Residential and commercial property service providers who want to improve their business processes by reducing the amount of site visits and surveys, thus reducing everyday operating expenses.
- Companies that need to assess and respond to changes in landscape by vegetation or by building expansion.
- Insurance carriers who can now utilize improved access to pre-event imagery to better understand severity of claims and more rapidly respond and process those claims with greater confidence.

This subscription-based service offering will provide the market with the recency and coverage that is needed to power their businesses as well as stable pricing for the length of the subscription.

## Marco Industries Announces Management Team Changes

Marco Industries has announced the promotion of Jill Porter and Lindsey Goodsell along with the hiring of building materials industry veteran Mark Eliasson.

“I’m excited about our management team,” said Neil Westgarth, Marco’s President. “All three are leaders with a proven track record and a passion for the growth and success of our company.”

Jill Porter has been promoted to Vice President of Operations. One of the very first Marco employees, she has served in a variety of roles, most recently as Director of HR and Vice President Administrative Services. Through the years, her responsibilities have included overseeing HR, IT, administration, credit, accounting, ERP, and more. In her new role, Porter will oversee all the company’s HR, administration, and manufacturing operations.

Lindsey Goodsell is Marco’s new Vice President of Marketing. Goodsell joined the company in 2015 from Lionsgate Entertainment where she was the Marketing Specialist and then Analyst for the Marketing Research Department. At Marco, her roles have included Marketing Specialist, Creative & Digital Marketing Manager, Sales & Marketing Manager, and most recently, Director of Sales and Marketing. In her new role as Vice President of Marketing, Goodsell will oversee all of Marco’s marketing efforts, from product development and promotion, to branding, market research, and key customer account management.

Marco’s newest hire is Mark Eliasson, who will serve as Vice President of Sales. Eliasson brings a wealth of experience to his position, having started in the building materials industry with CertainTeed, in the insulation group, moving from Territory Manager to National Accounts before joining GAF. At GAF, he grew the company’s business extensively within multiple channels of distribution and held

successive senior level positions within the organization including VP National Accounts and General Manager of the Decking Division. After GAF, Eliasson founded of MDE Sales, a successful sales management consulting business working with multiple manufacturers to launch or manage their products into multiple channels of distribution.

## Carlisle Architectural Metals Joins MRA As National Manufacturing Member

The Metal Roofing Alliance (MRA, [www.metalroofing.com](http://www.metalroofing.com)), the leading nonprofit trade organization representing the residential metal roofing industry in the U.S. and Canada, has announced that Carlisle Architectural Metals (CAM), along with its divisions Drexel Metals and Petersen Aluminum, have expanded their commitment to the MRA as a national manufacturing member.

As MRA’s most influential members, national manufacturing members play a flagship role in helping support and grow the overall residential metal roofing market by advocating for quality standards, providing education and support, and promoting metal roofing as a more sustainable, better performing and longer-lasting solution for homeowners.

“Our manufacturer members represent the biggest and best companies in the industry. They are committed to not only their own success, but also to spearheading growth and innovation for the overall industry through their involvement,” said Renee Ramey, MRA executive director. “Their leadership is a big reason why the residential metal roofing market in the U.S. and Canada is continuing to make tremendous gains.”

A division of Carlisle Construction Materials (CCM), Carlisle Architectural Metals (CAM) consists of two architectural metal roofing and wall brands, Petersen Aluminum and Drexel Metals, which serve various market channels with 15 current locations in the

U.S. As a long-standing member of the MRA, Drexel Metals offers metal roofing systems and custom fabrication. Petersen Aluminum, a leader in architectural metals offering quality applications for commercial and residential design, also now will be represented as part of CAM’s membership with the MRA.

## Flack Global Metals Finalizes Fabral Acquisition

Flack Global Metals (FGM) has announced it has closed on its acquisition of Fabral Metal and Wall Roof Systems from OmniMax International, Inc. Terms of the transaction were not disclosed.

Fabral is a supplier of metal building envelope solutions for multiple end markets including residential, commercial and post frame/ agricultural. FGM is a hybrid organization combining a domestic flat rolled metals distributor and supply chain manager with a financial services firm that focuses on delivering supply and pricing certainty within the metals space.

The Fabral acquisition is the first venture of FGM’s new direct equity investment platform which will invest directly in either full or partial ownership of OEMs where flat rolled products are the principal input to their manufacturing operations. FGM will invest additional capital in equipment, technology and people to enhance Fabral’s capabilities, including implementing the supply chain and risk management practices that have led to FGM’s growth to the 32nd largest steel distributor in the US in just over a decade.

“Our investment platform is the next step for us. Our ability to control our own risk has allowed us the financial position to re-invest in our industry,” said Jeremy Flack, Flack Global Metals Founder and Chief Executive Officer. “We will continue to innovate and prove that enterprise value is created when risk is handled correctly. We believe everyone should be hedging — and those who do will beat those who don’t.” **MR**



# Outstanding Residential Roof

Cornett Roofing, Modern Metal Receive ‘Best Roof’ Honors

**B**eauty, complexity and reliability: It’s a winning combination and the reasons behind why Metal Roofing Alliance (MRA) has declared a re-roofing project, installed by Cornett Roofing and featuring Modern Metal Roofing material, as winner of its Best Residential Metal Roofing Project competition for the final quarter of 2022.

The award-winning metal roof was installed on a 10,000 square-foot home located in Cincinnati, Ohio, after the home’s “30-year” original asphalt shingle

roof failed in just 10 years. In fact, the home, which is only 23 years old, has already had its roof replaced three times.

Given the homeowners wanted to install a rooftop solar system to help increase their energy independence, they couldn’t risk or afford yet another roofing failure. That’s why the decision to go with a quality metal roof made perfect sense. The new 24-gauge powder coated XL Spanish Tile Roof by Modern Metal Roofing has a 50-year warranty, meaning it will outlast even the solar panels. It’s

also lightweight, exceptionally strong and beautiful, mimicking the look of tile to complement the style of the home, but without the need for additional support or reinforcements to support the load of the 20kw system.

Even with the size and complexity of the roof design, it took Cornett Roofing just two weeks to complete the entire metal and solar installation.

“Helping homeowners lessen their dependence on power companies while also supplying a roof that will never need maintenance is one of the greatest accomplishments our company can provide on a daily basis,” said Keith Waller, sales manager for Cornett Roofing. “Whether it’s a 10,000- or a 2,200-square foot home, being able to offer excellent solutions that truly last makes all the effort worth it.”

Even without a solar system, quality metal roofs help homeowners save energy, increase comfort and improve their home’s sustainability. Metal roofs also are the most durable choice for withstanding extreme storms and hail, heavy snow and ice loads, and severe, hurricane-force high winds: important factors when considering Ohio’s regional weather conditions.

## About Metal Roofing Alliance (MRA)

Representing metal roofing manufacturers in the United States and Canada, the Metal Roofing Alliance (MRA, [www.metalroofing.com](http://www.metalroofing.com)) was formed to help educate consumers about the many benefits of metal roofs. The main objective of MRA is to increase awareness of the beauty, durability and money-saving advantages of quality metal roofs among homeowners, as well as to provide support for metal roofing businesses and contractors. **MR**



The Metal Roofing Alliance (MRA) has named Cornett Roofing and Modern Metal Roofing as winners of its Best Residential Metal Roofing Project competition for the final quarter of 2022. PHOTO COURTESY CORNETT ROOFING

# project of the month

Coated Metals Group  
<https://www.cmgmetals.com>



## Ridges and Valleys and Eaves, Oh My!

**F**irst Choice Exteriors fabricated 1 3/4" high standing seam roofing panels for a local home in Pataskala, Ohio. Installed by H.M. Metals, the home features a litany of ridges, eaves, and valleys. Due to the cut up nature of the project, it was a fairly difficult fabrication and install. Despite these challenges, the roof came together beautifully! [MR](#)



### Project Overview

**Location:** Pataskala, Ohio

**Building Size:** 7155 sq. ft.

**Contractor:** First Choice Exteriors

**Installer:** H.M. Metals

**Roof Panels:** First Choice Exteriors 1 3/4" Standing Seam, 26 ga.  
CMG Pre-finished Steel Coil and Flat Sheet, Dark Bronze

**Snow Retention:** CMG ColorGard® Unpunched Crossmember, with S-5! Colorgard



# Get Free Business Exposure Here!

We publish a Project of the Month in each edition of our magazines to promote best design and construction practices. We have received feedback from readers that it's one of their favorite features in our magazines.

If you're a roofer or contractor, you can receive **FREE NATIONAL EXPOSURE** for your business (free PR!) by sending roof details, a component list, and a brief description. The component list should identify manufacturers and models so we can give them proper credit, too!

The general description can include details about what the customer wanted, special elements, any other features that make the project noteworthy.

**These editorial placements are absolutely free!**

## WHAT WE NEED:

- Component List
- Brief Description
- Three to five attractive high resolution images (at least one must be the entire roof).



COURTESY OF BECKERS GROUP

Submission is not a guarantee of publication. We reserve the right to edit content.

**If you have any questions about the Project of the Month, contact:**

Karen Knapstein • [karen@shieldwallmedia.com](mailto:karen@shieldwallmedia.com) • 715-513-6767

# GET MORE INFORMATION ABOUT PRODUCTS & SERVICES SEEN IN THIS ISSUE. HERE'S HOW:



***If you are looking for more information from companies featured in this issue, fill out this form.***

*Mail the completed form to us, and we will have those companies get in touch with you. There's no need to fill out multiple forms; we'll do the legwork for you.*

Name (please print) \_\_\_\_\_

Signature (required) \_\_\_\_\_

Company \_\_\_\_\_

Address \_\_\_\_\_

City \_\_\_\_\_ State \_\_\_\_\_ Zip \_\_\_\_\_

Telephone ( \_\_\_\_\_ ) \_\_\_\_\_

E-mail \_\_\_\_\_ Date \_\_\_\_\_

**Please check one or more boxes to subscribe FREE/Renew for 3 years:**

- Garage, Shed & Carport Builder Magazine*  
  *Frame Building News*  
  *Metal Roofing Magazine*  
 *Rural Builder*  
  *Rollforming Magazine*  
  *Roofing Elements Magazine*  
  *Metal Builder*

I would like to receive my subscription:  By Mail    Digitally

Check this box if you wish to receive our Construction Express newsletter and offers from our partners.

**Email address is required to receive newsletter.**

**CONTACT NAME & EMAIL (OR) NAME & PHONE NUMBER ARE REQUIRED. WITHOUT THIS INFORMATION WE WILL NOT PROCESS THE REQUEST.**

**CHECK WHICH TITLE APPLIES TO YOU:**

- President  
 Owner  
 Partner  
 General Manager  
 Sales Manager/Rep  
 Engineer/Architect  
 Vice President  
 Foreman  
 Installer  
 Other \_\_\_\_\_

**PLEASE CHECK THE PRIMARY CATEGORY THAT DESCRIBES YOUR BUSINESS:**

- Builder, Dealer, Remodeler or Installer  
 Roofing Contractor  
 Metal Roofing Contractor  
 Building Material Dealer/Distributor  
 General Contractor/Remodeler  
 Manufacturer/Rep of Manufacturer  
 Architect/Specifier  
 Construction Consultant/Engineer  
 Building Owner/Developer  
 Other (Please Specify) \_\_\_\_\_

**SELECT A MAXIMUM OF 5 COMPANIES TO REQUEST INFORMATION FROM:**

Company Name: \_\_\_\_\_ PAGE: \_\_\_\_\_

Company Name: \_\_\_\_\_ PAGE: \_\_\_\_\_

Company Name: \_\_\_\_\_ PAGE: \_\_\_\_\_

Company Name: \_\_\_\_\_ PAGE: \_\_\_\_\_

Company Name: \_\_\_\_\_ PAGE: \_\_\_\_\_

I understand that by providing the above information I hereby consent to receive communication regarding my subscription via US Mail, telephone, and e-mail sent by *Metal Roofing Magazine*.

MR APRIL 2023

**ENGAGED IN THE FOLLOWING APPLICATIONS:**

- Gutters/Accessories  
 Institutional  
 Residential  
 Agricultural  
 Commercial  
 Industrial






# CSI: Who Reads Metal Roofing Magazine?

This installment of Construction Survey Insights takes a look at the business sizes of *Metal Roofing* subscribers who responded to the survey, as well as what they do.

Across most of the market niches and parameters, *Metal Roofing* subscribers are very consistent with the responses across all of the collection methods. Obviously *Metal Roofing* readers would have a higher presence in the metal roofing segments.

The one difference that does stand out is there are fewer small businesses (businesses in the \$0-\$2 million gross sales category). The 7% missing from the under \$2 million category are approximately evenly distributed across the three groups in the \$10 million+ range. **MR**

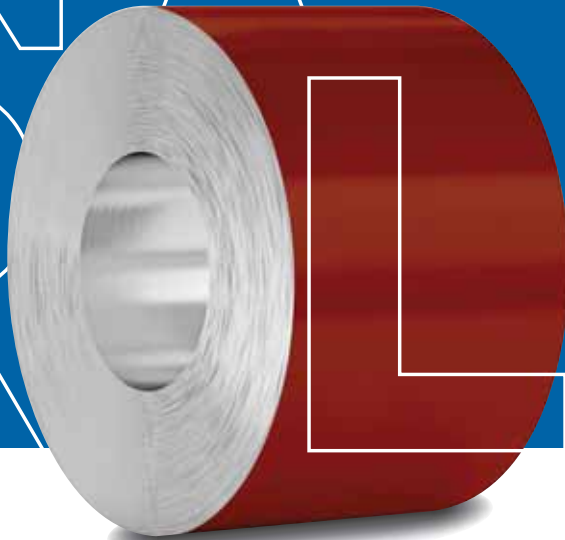
 For more titles, check out  
Shield Wall Media online:  
[www.shieldwallmedia.com](http://www.shieldwallmedia.com)

What is your primary type/ area of construction?	All Respondents	Metal Roofing Subscribers
Roofing	7%	7%
Metal Roofing	20%	31%
Other (Gutters)	0%	0%
Post Frame	23%	21%
Metal Building	20%	19%
Wood Framed (Stick Built)	7%	7%
Modular, Sheds & Carports	1%	0%
Masonry, SIPs & Concrete	3%	4%
Sub-Contractor	1%	0%

In what types/niches of construction do you participate?	All Respondents	Metal Roofing Subscribers
Roofing	33%	38%
Metal Roofing	66%	73%
Other (Gutters)	22%	28%
Post Frame	47%	49%
Metal Building	54%	58%
Wood Framed (Stick Built)	35%	33%
Modular, Sheds & Carports	31%	36%
Masonry, SIPs & Concrete	13%	16%
Sub-Contractor	10%	9%

What is your annual volume in gross sales?	All Respondents	Metal Roofing Subscribers
\$0-2,000,000	30%	23%
\$2,000,000 - 5,000,000	9%	19%
\$5,000,000 - 10,000,000	11%	11%
\$10,000,000 - 20,000,000	14%	17%
\$20,000,000 - 50,000,000	9%	11%
\$50,000,000+	17%	19%

# WE'RE ON A ROLL



## WE SPECIALIZE IN **PAINTED ALUMINUM COIL**

Like our coil, a relationship with Mid South is seamless and catered to your specifications. With over 25 years in the industry, we are painted aluminum coil experts down to our core.

**Trust the specialists and let the good times roll.**

### **ROOFING, SOFFIT, FACIA AND TRIM**

Aluminum coils and  
cut-to-length sheet.



**731.664.2210**  
midsouthalum.com

**MID SOUTH**  
ALUMINUM