

# the idea book

**THE LATEST  
DESIGNS IN  
METAL ROOFING**



# Why **SHARKSKIN**? We Outperform the Competition!

**Tyndall AFB, Hurricane Michael, Ground Zero:  
Although the metal roof was lost, Sharkskin  
Ultra SA® maintained its integrity with no failure  
against 175 mph winds with 200 mph gusts.**

**SEE OUR LATEST "DESIGN UPLIFT PRESSURE" NUMBERS  
go to [www.is.gd/FL40958](http://www.is.gd/FL40958)**



**CBS  
NEWS**  
CBSNEWS.COM

  
**SHARKSKIN®**  
The Ultimate Roof Underlayment



**877.742.7507**  
[www.sharkskinroof.com](http://www.sharkskinroof.com)



**WINNER**

# Is there more than inspiration?

**W**elcome to the 2023 Metal Roofing Idea Book. There is a lot to look for in these annual issues. Looking back it is a good way to see the trends that shaped our industry. Some years the projects that

builders and manufacturers showcase are specific types of roofs. They could be natural metal finishes, new shingle profiles or colors, standing seam or through fastened. Some years the projects take a theme for the building types or styles.

They could be churches and spires, mountain retreats or wedding barns.

As a company Shield Wall Media is venturing into data collection. The analytical side of me wonders if we can gain more than inspiration from the projects in the Idea Book. Is there a story in the nature and number of projects and how they change from year to year?

That bigger question is for another day. For now please enjoy the beauty and craftsmanship displayed in the 2023 Idea Book. If you have a project in the issue, thank you for dedication required to develop a trade into an art form.



Gary Reichert, Publisher  
gary@shieldwallmedia.com



Residence roofed with ProVia's Larkstone Slate metal panels. See the details on page 40.  
PHOTO COURTESY OF PROVIA.

## Help us collect information you need



SCAN QR CODE  
TO TAKE SURVEY

**THE SURVEY CLOSES MAY 31ST.**

**Results will be available  
starting with the July issue  
of Rural Builder.**

[www.surveymonkey.com/r/XL3JHK3](https://www.surveymonkey.com/r/XL3JHK3)

# Mid 2023 Shield Wall Media STATE OF THE INDUSTRY SURVEY



# the **idea book** contents

## PROJECTS

- 10: Residential**  
by Distinctive Metal Roofing
- 12: Nonprofit**  
by Cornett Roofing Systems
- 14: Municipal**  
by AceClamp
- 16: Residential**  
by Kassel & Irons
- 18: Residential**  
by Fine Metal Roof Tech
- 20: Residential**  
by Nu-Worx LLC
- 22: Commercial**  
by McElroy Metal
- 24: Nonprofit**  
by EDCO
- 26: Residential**  
by Green Knight Metal Roofing
- 28: Guest House**  
by Westlake Roofing Solutions
- 30: Municipal**  
by EXCEPTIONAL Metals



- 32: Agricultural**  
by Levi's Building Components
- 34: Residential**  
by Coated Metals Group
- 36: Residential**  
by Rheinzink
- 38: Residential**  
by HiLine Construction
- 40: Residential**  
by ProVia
- 42: Commercial**  
by S-5!
- 44: Residential**  
by Graber Post
- 46: Residential**  
by Premier Roofing
- 47: Residential**  
by Distinctive Metal Roofing
- 48: Municipal**  
by Petersen/PAC-CLAD
- 50: Agricultural**  
by Hixwood
- 51: Residential**  
by Suntuity/Englert
- 53: Residential**  
by Cornett Roofing Systems
- 54: Municipal**  
by MBMA
- 55: Residential**  
by Premier Roofing
- 56: Residential**  
by True Metal Supply





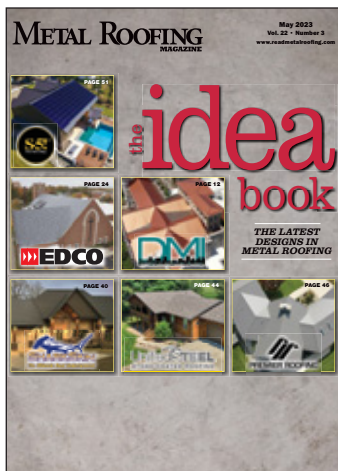
## DEPARTMENTS

- 3 Publisher's Note
- 6 Editor's Note
- 6 MRA Update
- 57 Business Connections
- 60 Events Calendar
- 62 News
- 65 New Products
- 66 Products & Services

**GO TO PAGE 15 TO  
SUBSCRIBE  
TO MORE  
FREE MAGAZINES**

## JUNE PREVIEW

- Roofer Safety
- Hand Shears
- Metal Shingle History



### ON THE COVER:

Cover photos sponsored by S-5!, EDCO Products, Direct Metals Inc, Kirsch Building Products-Sharkskin, Westlake Royal Roofing Solutions, and Premier Roofing.

## INDEX OF ADVERTISERS

Company	Page #
AceClamp.....	39
Acu-Form .....	57, 60
Advanced Architectural.....	31
AppliCad Software.....	25
ASC Machine Tools Inc.....	23, 58
Aztec Washer Company.....	58
Bradbury Group, The.....	57
Deliverance Powered Safety Hammers LLC.....	58
Direct Metals Inc.....	FC, 21, 58
Drexel Metals - Carlisle Construction Group.....	7
Dripstop®.....	BC
Dynamic Fastener.....	13
East Coast Fasteners.....	29
EDCO Products.....	FC
EPDM Coatings.....	37
Everlast Metals.....	58
Golden Rule Fasteners.....	52, 57
Hershey's Metal Meister.....	19, 58
Hixwood.....	39
I Beam Sliding Doors.....	58
Indiana Warm Floors.....	59
Kevmar Manufacturing.....	58
Keymark Industries (SmartBuild Systems).....	59
Kirsch Building Products - Sharkskin.....	FC, IFC
Leland Industries Inc.....	59
Levi's Building Components.....	57
Marion Manufacturing.....	59
Maze Nails.....	17
Metal Exteriors.....	57
Metal Rollforming Systems.....	35
MWI Components.....	27
Petersen / PAC-CLAD.....	9
Pine Hill Trailers.....	59
Planet Saver Industries.....	57
Plyco Corporation.....	59
Premier Roofing.....	FC
ProVia.....	11
Raytec Manufacturing.....	33
RetroFitClip.....	57
Roll Former LLC.....	62
S-5!.....	FC
Safe-Way Garage Doors.....	57
Samco Machinery.....	59
United Steel Supply.....	59
Westlake Royal Roofing Solutions.....	FC

## YOUR PRIVACY IS IMPORTANT TO US

Unrelated third parties often attempt to sell mailing lists for what they say are our publications. You can be assured that WE DO NOT, HAVE NOT, AND WILL NOT EVER SELL OUR SUBSCRIBER LISTS. We will also NOT sell the attendee or exhibitor lists from our shows. We do provide attendee lists to the exhibitors free of charge and as a courtesy for their support, but we NEVER provide this or any other information to independent vendors.

**Gary Reichert,**  
**Publisher, Shield Wall Media**

# METAL ROOFING MAGAZINE

### Managing Editor

Karen Knapstein  
karen@shieldwallmedia.com  
715-513-6767

### Editorial Staff

Linda Schmid, Rocky Landsverk

### Projects Manager

Marcus Josiger  
marcus@shieldwallmedia.com

### Circulation/Subscriptions

Barb Prill  
barb@shieldwallmedia.com  
920-471-4846

### Publisher

Gary Reichert  
gary@shieldwallmedia.com  
715-252-6360

### Director of Sales

Missy Beyer  
missy@shieldwallmedia.com  
920-216-3007

### Executive/Advertising Assistant

Kathy Budsberg  
kathy@shieldwallmedia.com

### Graphic Designers

Tom Nelsen, Kevin Ulrich

Metal Roofing Magazine (ISSN: 1533-8711) (Volume 22, Issue 3) is published seven times per year (March, April, May, July, September, November and December) by Shield Wall Media LLC, 150 Depot St, Iola, WI 54945. Periodical postage paid at Iola, WI, and at additional mailing offices. Canadian Agreement Number: 40665675. POSTMASTER: Send address changes to Metal Roofing Magazine, Barb Prill, PO BOX 255, Iola, WI 54945. Copyright 2023 Shield Wall Media LLC. Metal Roofing Magazine and its logo are registered trademarks. Other names and logos referred to or displayed in editorial or advertising content may be trademarked or copyright. Metal Roofing Magazine assumes no responsibility for unsolicited materials sent to it. Publisher and advertisers are not liable for typographical errors that may appear in prices or descriptions in advertisements. Mailed free to roofing contractors and their suppliers throughout North America. Others may subscribe: \$29.98 for 1 year, \$56.98 for 2 years, and \$80.98 for 3 years.

## ONLINE SERVICES:

- Subscribe FREE to Metal Roofing Magazine
- Archived Stories
- Subscribe to Construction Express e-newsletter



CHECK OUT OUR WEBSITE @  
**www.readmetalroofing.com**

E-MAIL THE EDITOR AT  
karen@shieldwallmedia.com



# Is this the rise of metal 'shingles'?

Welcome to the 2023 Metal Roofing Idea Book. As always, you'll find this special edition packed with metal roofing projects from all over the United States.

As I paged through the final proofs I couldn't help but notice the number of residential metal roof projects that were submitted for this issue. From this small sampling, it would appear as though there are a growing number of homeowners who appreciate metal in disguise. Research is needed to be sure; we'd love it if you would drop us a line or give us a call and let us know what you're experiencing in your area. Are more people looking for metal roofs other than standing seam or through-fastened panels?

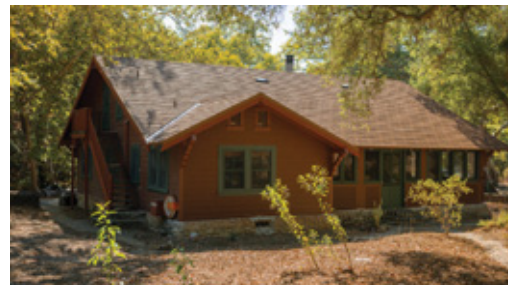
Since this issue is all about roofing projects, you'll have to wait till the next

edition for your next dose of regular metal roofing features and news. But you won't have to wait long; the June/July edition heads off to the printer in a couple weeks, which means it will be landing in your mailbox shortly thereafter.

The next edition has a hearty flashback feature about the history of metal shingles. The re-roofing series of articles by McElroy Metal also continues with its third and final installment: *Nine ways to recover an existing sloped metal roof with standing seam*.

No doubt spring storms are on the way, so you may find the article about lightning protection and metal roofs of interest. It, too, will be in the June/July edition.

Until next time — be well (and don't forget to send me a note about roofing trends in your area). **MR**



COURTESY OF WESTLAKE. SEE PAGE 28.



COURTESY OF PROVIA. SEE PAGE 40.

## MRA UPDATE

# All the Rage

## These Top 3 Curb Appeal Trends are Captivating Homeowners in 2023

What are the latest curb appeal style trends for the new year? With the booming growth in the popularity for metal roofing in the U.S. and Canada, the Metal Roofing Alliance (MRA) is reporting 2023 is all about substance over superficial, and that beauty isn't all about appearance, but performance too. For 2023, the MRA's top three residential metal roofing trends are:

### #1. Homeowners fall for the dark and dramatic

There's just something about the tall, dark and handsome home that is destined to catch the eye. That's why homeowners seeking serious curb appeal are opting for deep shades of dark-gray verging on midnight black for their metal rooftops.

Stark, clean and super modern, the ultimate expression of this look is the use of metal—not just for the roof—but as metal clad siding too. The good news is thanks to high performance coatings, quality metal roofing in dark colors still achieve significant energy savings and better solar emissivity to help keep a home's interior cool and utility bills low. And because it's metal, it also is a great choice for protection in wildfire-prone areas. Paired with a brightly colored front door or garden accents, this look is the dark knight of stand-out 2023 style trends.

### #2. This year is all about allure (of anodized)

Homeowners who want bold never boring curb appeal style don't need to look further than an anodized aluminum metal





## THE DM-ARM HAS YOUR BACK!

*Drexel Metals Association of Regional Manufacturers (DM-ARM) is a comprehensive portable roll former program designed to help you meet building codes and build your brand locally. The Drexel Metals DM-ARM program allows installers and regional manufacturers to grow their businesses by offering better local control, greater profits, freight savings, less scrap, and the ability to provide metal roofing on-demand.*

*As a DM-ARM member, Drexel Metals becomes your “back-office partner”, allowing your team to spend more time in the local market!*



Become a member at  
[www.drexmet.com](http://www.drexmet.com).



### Sell More with the Roofing Passport

Exclusive to DM-ARM members, the Sherwin-Williams® Roofing Passport is a groundbreaking platform that simplifies metal roof estimation and ordering. As a fully automated program, this digital platform enables project estimation in one click. The Sherwin-Williams Roofing Passport creates a powerful link between EagleView's highly accurate roof measurements and SmartBuild's automated estimation software, creating an easy-to-use bidding platform.

Learn more at [www.drexmet.com](http://www.drexmet.com)



1234 Gardiner Lane | Louisville, KY 40213  
[drexelmetals.com](http://drexelmetals.com) | Toll Free: 888-321-9630 | Fax: 877-321-9638





roof. The process of anodizing highlights the metallic depth and natural sheen of organic aluminum alloy, while minimizing color variations. That gives it a rich, dimensional hue that showcases and celebrates the alloy's natural beauty and announces to the neighborhood this isn't

just your run-of-the-mill roof.

The beauty of anodized aluminum is far more than skin deep. That's because anodized aluminum is not a coating. Instead, it is created through an electrochemical process where the aluminum is converted into aluminum oxide, giving it

exceptionally strong, durable and damage resistant properties. Anodized aluminum protects against corrosion and rust, resists nicks and scratching and is one of the most durable surface finishes available. It is particularly well-suited for coastal regions and applications, where corrosion can its toll even on coated materials.

### 3. Forget Bland: Mix and match combinations enchant homeowners

Stamped, stone coated, different patterns, shapes and colors...if you can dream it, it's easy to combine all sorts of possibilities, thanks to the fact that metal roofing comes in more shades, patterns and designs than nearly any other roofing material. As an extremely versatile material, homeowners are using metal's many options to their full advantage and combining different looks and designs to highlight architectural features such as turrets, dormers, porches and outbuildings. For more expensive alloys such as copper, using it as an accent in combination with other metals is a great way to highlight special rooftop features without breaking the bank.

"More homeowners are realizing their rooftops have untapped potential. Why slap a boring roof on when there's an opportunity to not only enhance the performance, but add serious style points to your home? With a skilled, experienced installer, good quality material and some vision and inspiration, the sky is the limit for just how far you go when you choose metal," said Renee Ramey, MRA executive director.

#### About The Metal Roofing Alliance (MRA)

Representing the residential metal roofing industry in the United States and Canada, the Metal Roofing Alliance (MRA, [www.metalroofing.org](http://www.metalroofing.org)) was formed to help educate consumers about the many benefits of metal roofing. **MR**



*These homes, with their dark and dramatic use of metal roof and siding, and performance and sustainability features, are right on trend for 2023. IMAGES COURTESY OF MRA/MCELROY METAL*



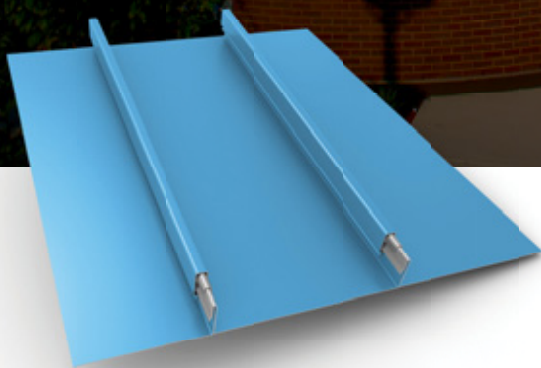


# Whimsical Roofline



**Vibrant Dynamic Blue Snap-Clad metal panels** brighten the playful roof shapes and walls of two interior courtyards, invigorating this mixed-use building that houses a Chicago Public Library, childcare center and community meeting space.

Altgeld Family Resource Center, Chicago    Installing contractor: Progressive Dynamics    Architect: KOO LLC  
Owner: Chicago Housing Authority    Photo: hortonphotoinc.com



**Snap-Clad**  
Metal Roof and Wall System  
Custom Dynamic Blue



View the  
case study  
and video





## PROJECT

# RESIDENTIAL

PRIVATE HOME ■ HARMONY, PENNSYLVANIA

**INSTALLER:**

Distinctive Metal Roofing

**CONTRACTOR:**

Distinctive Metal Roofing

**ROOF SIZE:**

6,100 sq. ft.

**ROOF PANELS:**

Premier Metal Roofing,  
standing seam

**COATING:**

Kynar

**INSULATION:**

Closed/open cell insulation between  
roof deck and ceiling

**FASTENERS:**

Concealed

**SNOW/RAIN MANAGEMENT:**

Snow Guards: Premier Metal Roofing  
Gutters: Distinctive Metal Roofing

**UNDERLAYMENTS:**

Roof Aquaguard and Titanium UDL 30

[www.distinctivemetalroofing.com](http://www.distinctivemetalroofing.com)



A remotely located log home where we coordinated a spray foam insulation installation prior to the installation of our standing seam metal roof in Evergreen.





# HEY ROOFING PRO!

INCREASE YOUR PROFITS WITH  
**PROVIA METAL ROOFING**



ProVia Metal Roofing is **more profitable per square** than asphalt roofing. It's the next generation of metal roofing—a premium stamped panel roof system that elevates your product offering, provides long-term ROI, and boosts your bottom line as well.



DOORS | WINDOWS  
SIDING | STONE | ROOFING

**SCAN TO  
LEARN MORE**



## PROJECT

# NONPROFIT

## SISTERS OF CHARITY OF NAZARETH ■ NAZARETH, KENTUCKY

**INSTALLER:**

Cornett Roofing Systems

**CONTRACTOR:**

Cornett Roofing Systems

**ROOF SIZE:** 90 squares**ROOF PANELS:**

Modern Metal Roofing, 24-ga.,  
Standing Seam and Flat Seam  
Copper

**COATING:**

Kynar, Copper Penny

**VENTILATION:**

Ridge

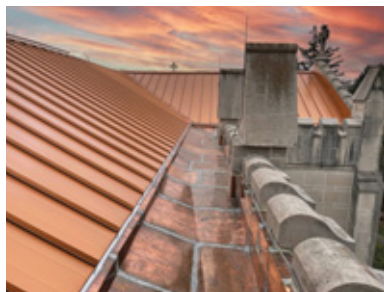
**FASTENERS:**

Direct Metals Inc.

**UNDERLAYMENT:**

Tri-Shield Synthetic  
Underlayment

<https://cornettroofing.com/>



Cornett Roofing Systems was hired to replace a five year old roof that was improperly installed by a previous contractor for this historical church in Nazareth, Kentucky. The church wanted a new roof that would stop the leaking and protect their beautiful architectural designs on the inside of their place of worship. They wanted a roof that would provide a beautiful aesthetic to make the outside as beautiful as the inside as well as to protect the building for many years to come. They chose to install a standing seam roof in a copper penny color. Cornett Roofing paired this with difficult copper flat seam work on various areas of the building to preserve the historical feel and look. The finished product is breath-taking and will continue to protect the church for decades to come.



# Rosie The Riveter says:

You know if it's metal, DYNAMIC FASTENER is there. Whether your challenge is a leaky metal roof (DROP-STOP®), snow retention (DYNA-GUARD®), roof penetrations (DYNA-FLASH®), or fastening to all gauges of steel (D•F® screws), we are your hassle free partner on the job site and on your project manager's desk. This includes our continually expanding line of D•F® rivets!



Rosie The Riveter says:  
Give us a call... you  
can ask for me, I'm your  
D•F Rivet Boss®!

We want to be your rivet supplier!  
What size do you need? Got it!  
What material do you need? Got it!  
What color do you need? Got it!  
What quantity do you need? Got it!  
Do you want your rivets in handy bags of 250? Got it! Our stock level on rivets is over 185 *million* rivets with over a *hundred* different stocked colors for same day shipping.



12V Rivet Tool with  
**FREE** Extra Battery



D•F® Rivets are now available in the most requested color . . . **INVISIBLE**

We stock the 43 ALL S/S rivet in 96 different colors. The iconic picture of Rosie The Riveter, Rivet Boss, Drop-Stop, Dyna-Guard, Dyna-Flash & D•F are registered trademarks of Dynamic Fastener Service Inc.

**DYNAMIC FASTENER 800-821-5448**

## PROJECT

# MUNICIPAL

HENDRICK HUDSON FREE LIBRARY ■ MONTROSE, N.Y.

**ARCHITECT:**

Robert Gabalski, Lothrop  
Associates, LLC

**CONTRACTOR:**

Yankee Construction

**ROOF SIZE:** 1,600 sq. ft. +/-

**ROOF PANELS:**

Original Roofing: Butler  
Manufacturing, MR-24 Roof  
System, 0.032  
Addition Roofing: Englert Series  
2500 Panel System, 24-ga.,  
"Medium Bronze" #R-32.3 - E91  
- SRI 35.6

**UNDERLAYMENT:**

High Temp, self-adhering 40mil,  
slip-resistant with Fire Retardant  
Slipsheet Type II (No. 30)  
asphalt saturated organic felt

**FASTENERS:**

0.024-inch nominal thickness,  
zinc-coated steel sheet

**VENTILATION:**

Original Roofing:  
Metal ridge vent

**SNOW RETENTION:**

AceClamp A2 Snow-Rail System  
with PMC Industries Z3 Bracket

**GUTTERS:**

24-ga. brake-formed Galvalume  
box gutter

[www.aceclamp.com](http://www.aceclamp.com)



The expansion of the Hendrick Hudson Free Library in Montrose, New York, features a sweeping, non-traditional, single planar roof where standing seams are laid out in a pattern where the pitch of the seam is not perpendicular to the roof edge. The new expansion was part of the children's room addition and was designed to reflect and inspire the artistic spirit of the community.

The library's new roof meets up with a previously built fascia. For safety reasons, the specification called for snow guards, but without exact specs on the type or brand that would best match the angles of the new roof.

One of the most substantial problems Yankee Construction encountered, besides the angles, was that the library's requirements called for a significant amount of the roof's usable square footage to be allocated towards the installation of photovoltaic panels. A solution would need to be found to help maximize on available rooftop space, while also allowing the snow guards to maintain their load correctly along the structural wall, which in this case was far from a right angle.

As a result, AceClamp developed the Variable Angled Bracket, which allows for installation of snow retention rails within a variable range.





# SUBSCRIBE NOW!

Shield Wall Media brands are dedicated to serving the information needs of construction professionals.

SCAN TO  
SUBSCRIBE



**SUBSCRIBE ONLINE:** [shieldwallmedia.com/subscribe](http://shieldwallmedia.com/subscribe) or fill out & mail form below.

FRAMEBUILDING NEWS

METAL  
ROOFING  
MAGAZINE

Rural  
Builder

Rollforming  
Magazine

GARAGE • SHED • CARPORT  
BUILDER

ROOFING  
ELEMENTS

Metal  
Builder

## FREE 3-YEAR SUBSCRIPTIONS!

1. Please check one or more boxes, sign & date:

I wish to receive: ☐ Metal Roofing ☐ Garage, Shed & Carport Builder ☐ Metal Builder  
☐ Rural Builder ☐ Frame Building News ☐ Rollforming ☐ Roofing Elements

Signature (REQUIRED): \_\_\_\_\_ Date: \_\_\_\_\_

Print Name: \_\_\_\_\_

Company: \_\_\_\_\_

Address: \_\_\_\_\_

City/State/Zip: \_\_\_\_\_

Phone or Email (REQUIRED): \_\_\_\_\_

☐ Check this box if you wish to receive the email newsletter associated with the magazine subscription(s) above.

I would like to receive my subscription:  
☐ By Mail  
☐ Digitally

SWM2023

2. Choose which title applies:

- ☐ President/Vice President  
☐ Principle/Shareholder  
☐ Sales Manager or Rep  
☐ Foreman/Crew Manager  
☐ Engineer/Architect  
☐ Other: \_\_\_\_\_

3. Describe your business:

- ☐ Builder/Contractor  
☐ Dealer/Distributor  
☐ Manufacturer  
☐ Engineer/Architect  
☐ Other: \_\_\_\_\_

4. Please check all of the types of building or manufacturing you are involved with:

- |                                       |                                      |   |   |
|---------------------------------------|--------------------------------------|---|---|
| <input type="checkbox"/> Post Frame   | <input type="checkbox"/> Residential | <input type="checkbox"/> Metal Roofing          | <input type="checkbox"/> Rollforming      |
| <input type="checkbox"/> Metal Frame  | <input type="checkbox"/> Commercial  | <input type="checkbox"/> Trusses/Columns        | <input type="checkbox"/> Trim & Flashings |
| <input type="checkbox"/> Fabric       | <input type="checkbox"/> Equine      | <input type="checkbox"/> Foundations            | <input type="checkbox"/> Insulation/      |
| <input type="checkbox"/> Agricultural | <input type="checkbox"/> Roofing     | <input type="checkbox"/> Gutters/Snow Retention | <input type="checkbox"/> Moisture Control |



**MAIL TO:**  
Shield Wall Media  
ATTN: Barb Prill  
PO Box 255, Iola, WI 54945

## PROJECT

# RESIDENTIAL

## PRIVATE HOME ■ LAKE MILLS, WISCONSIN

### INSTALLER:

Swita Metal Roofing

### ROOF SIZE:

40 squares

### ROOF PANELS:

Kassel & Irons KasselWood in  
Barkdust and Copper Penny

### COATING:

PPG and Steelscape/Kynar  
500®/Hylar 5000® Specialty  
Printcoat

### VENTILATION:

Isaiah Industries Hi-Flow Ridge  
Vent

### FASTENERS:

Maze Nails/Ringshank Roofing  
Nails

### SNOW MANAGEMENT:

Sieger Snow Guards/MC2 Snow  
Guards

### UNDERLAYMENT:

Isaiah Industries  
RoofAquaGuard UDLX Synthetic  
Underlayment



Restoring a 19th-century Victorian home in Lake Mills, Wisconsin, was a major project.

The homeowners contacted Swita Metal Roofing to remove the old cedar roof and install KasselWood, a galvanized, Kynar®-coated steel roof panel in two colors, Barkdust and Copper Penny. The interlocking, hidden fastener roofing, snow guard system, and vented ridge combine for a complete roofing package. The new roof perfectly captures the home's unique character, capping off a beautiful restoration.

[kasselandirons.com](http://kasselandirons.com)





# AMERICA'S PREMIER SPECIALTY NAIL MANUFACTURER

## MAZE LUMBER

- 1848 Founded by Samuel Maze in Peru, Illinois
- 1886 Purchases First Nail Machine to Produce Nails from Pure Zinc
- 2023 *Maze Lumber is the Oldest Lumberyard in Illinois*

## MAZE NAILS

- 1900 First Manufacturer to Pack Nails in 50 Lb. Boxes
- 1905 First Manufacturer to Pack Nails in 5 Lb. Boxes
- 1914 Produces the First Hot-Dipped Nails by Hand
- 1930 Designs and Launches Spiral Shank Nail Product Line
- 1934 Designs and Launches Ring Shank Nail Product Line
- 1955 Develops Exclusive Stormguard Double Hot-Dip Galvanizing
- 1996 Founded S.S.E., our Collating Division
- 2006 Earns Miami-Dade County Approval on Selected Roofing Nails
- 2008 Certified by Scientific Certification Systems for Recycled Content
- 2011 Fifth Hot-Dip Galvanizing Production Line Installed
- 2011 Highlighted on ABC News, Diane Sawyer's *Made In America*
- 2016 Installs Second Paint Production Line for Trim Nails
- 2023 *EVERY Maze Nail still 100% Made in the USA*



1.800.435.5949 [mazenails.com](http://mazenails.com)



## PROJECT

# RESIDENTIAL

PRIVATE HOME ■ PARK CITY, UTAH

**INSTALLER:**

William Verlander

**MANUFACTURER:**

Fine Metal Roof Tech

**ROOF SIZE:**

7,000 sq. ft.

**ROOF PANELS:**

Fine Metal Roof Tech double-locked standing seam in terne

**FASTENERS:**

Stainless steel

**SNOW GUARDS:**

800 ft., stainless steel

**GUTTER:**

300 ft. European half-round gutters in terne

**OTHER:**

5,000 sq. ft. 7/8" round corrugated wall cladding, terne

[www.finemetalrooftech.com](http://www.finemetalrooftech.com)



**T**his mountain home in beautiful Park City, Utah shows both terne corrugated panels on the walls and terne\* double-locked standing seam on the roof. Paired with stainless snow abatement systems and European half round gutter systems, this gorgeous home will become lovelier with age and patina and stand up to the grueling winters this area can sometimes experience. It will certainly last maintenance-free for generations.

*\* Terne (pure tin over a stainless steel substrate) lends itself to extreme weather environments holding up well against hail and heavy snow loads. As a "living" metal, the tin will weather and change over time with each project developing its own distinctive personality.*





## SIMPLIFY YOUR OPERATION WITH

# v-link

Our Integrated Software Eases  
Steps of Design to Production  
in a Smooth Simplified Process.

*Don't Just Bend Trim.  
**Variobend It!**  
Call Today!*



### DESIGN



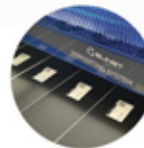
Design Your  
Profile

### CUT



Cut Metal Flats  
with Our  
Slinet Machine

### LABEL



Apply  
Bar Code Labels

### BEND



Scan Barcodes  
and Bend Metal  
Profile with  
Variobend Folder

### TRIM



Create Custom  
Trim Products

**Variobend**  
U.S.A.  
[VariobendUSA.com](http://VariobendUSA.com)

 **Hershey's**  
The **METAL**  
MEISTER LLC  
[info@hersheysmm.com](mailto:info@hersheysmm.com)

**SLINET**  
ASCO machines  
**Toll Free: (877) 289-3030**

## PROJECT

# RESIDENTIAL

PRIVATE HOME ■ DESTRAHAN, LOUISIANA

**INSTALLER:**

Martinez Contracting LLC

**CONTRACTOR:**

Nu-Worx LLC

**RESIDENCE SIZE:** 5,559 sq. ft.

**ROOF PANELS:**

Vicwest True Nature North  
Ridge Slate Metal Roof Tiles

**COATING:**

PVDF

**FASTENERS:**

Vicwest #10x1/2" Pancake  
Head Type 4

**SEALANT:**

JTS1 Joint & Termination  
Sealant

**UNDERLAYMENT:**

GAF Storm Guard

**RAIN MANAGEMENT:**

The deep key ways in North  
Ridge Slate force water down  
the roof into the gutters.

**OTHER:**

Custom A-Frame Chimney Cap  
Fabricated by White-Herrin  
Metals

[www.nuworxllc.com](http://www.nuworxllc.com)



The customer was looking to replace the roof after damage occurred from Hurricane Ida. The metal shingles she was looking to get replaced were discontinued. We found a superior product in Vicwest's True Nature North Ridge Slate Line. The installation went smooth and the customer is extremely happy.

True Nature's North Ridge Slate metal roof tiles feature a thicker profile and shadow line that makes them indiscernible from slate when installed.



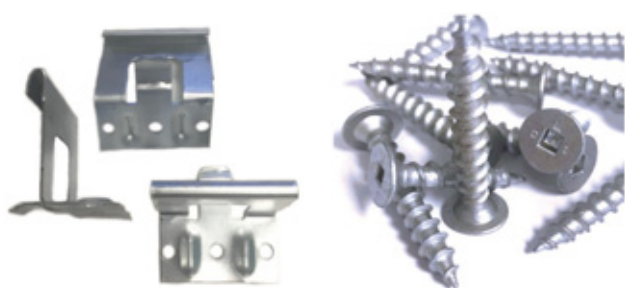




# SINGLE SOURCE

## PANCLIP

## SCAMP



***Whether a metal roof is standing seam or exposed fastener, DMI has the high quality products for a successful roof project.***

- PANCLIP low-profile Pancake & Wafer Head standing seam roof screws & panel clips for SNAP-LOCK & MECHANICAL LOCK profiles.
- SCAMP 304 SS Cap Type 17 & SD Points for Post-Frame & Steel-Frame metal building applications have a 40 year warranty.
- PANCLIP & SCAMP Fasteners meet Dade County, FL specifications for coastal, high-corrosion applications.
- Accessories such as Pipe Flashings, Butyl Mastic & tube sealants, 304 SS Rivets, solid & vented foam closure strips round out the product line.



***Let DMI be the SINGLE SOURCE  
you can rely on for your next metal roof project.***

**CALL 855-800-8878 • [www.directmetalsinc.com](http://www.directmetalsinc.com)**

## PROJECT

# COMMERCIAL

## DORMIE GOLF CLUBHOUSE ■ WEST END, NORTH CAROLINA

**ARCHITECT:**

Sinclair Hille Architects,  
Lincoln, Nebraska

**INSTALLER:**

Grieme Roofing Company,  
Aberdeen, North Carolina

**CONTRACTOR:**

Sampson Construction Co.,  
Lincoln, Nebraska

**ROOF SIZE:**

12,000 sq. ft.

**ROOF PANELS:**

McElroy Maxima 24 ga. panel

**COATING:**

Sherwin-Williams Fluoropon  
PVDF Pre-Weathered Galvalume

**OTHER:**

6,300 sq. ft. flat stock used for  
field fabrication of preformed  
metal trims, gutters, down-  
spouts

[www.mcelroymetal.com](http://www.mcelroymetal.com)



The Dormie Golf Club's goal was to showcase modern, attractive physical amenities indicative of a highly-rated golf destination in an aesthetic that reflected the region's rural character and history. Metal roofing was selected due to its durability and visual compatibility with other materials used for the construction of the clubhouse. The 16,000-square-foot clubhouse features a spacious and stylish summit with vaulted ceilings and a contemporary dining room, anchored by a large, two-sided fireplace.







# ASC MACHINE TOOLS, INC.

PREMIUM QUALITY ROLLFORMING MACHINERY - MADE IN THE USA SINCE 1949



PANEL LINES



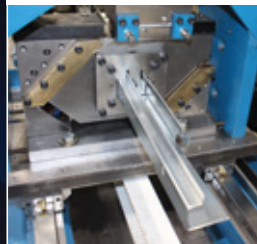
TRIM LINES



DECKING LINES



TRACK LINES



ROLL UP DOOR LINES



CHANNEL LINES



CZ PURLIN LINES



PURLIN STACKER



SEAMING STATIONS



ROLL-UP STATIONS



## PROJECT

# NONPROFIT

WILLOUGHBY CHURCH ■ WILLOUGHBY, OHIO

**INSTALLER:**

Superior Home Improvement & Construction LLC

**ROOF SIZE:**

115 squares

**ROOF PANELS:**

EDCO ArrowLine Slate Style

**COATING:**

70% PVDF, Charcoal Gray Blend

**VENTILATION:**

Quarrix Ridge Vent

**FASTENERS:**

1" & 2" Zip Screws

**SNOW GUARDS:**

Sno Gem 1/2 Carat

**UNDERLAYMENT:**

Titanium UDL 30 Synthetic; for ice & water: Titanium PSU Ice & Water Shield

[www.edcoproducts.com](http://www.edcoproducts.com)



**T**his church had originally had genuine quarried slate as the roofing material. They wanted to go with a product that was close to the look of Slate and they had selected our EDCO ArrowLine Slate style in Charcoal Gray Blend.







# ARE YOU SERIOUS ABOUT METAL ROOFING?

If you're doing 10+ manual take-offs per week, it's time to scale up to professional metal roofing software.



Get your free trial at  
[www.applicad.com](http://www.applicad.com)



## PROJECT

# RESIDENTIAL

PRIVATE HOME ■ AUSTIN, TEXAS

**INSTALLER:**

Green Knight® Metal Roofing

**CONTRACTOR:**

Green Knight® Metal Roofing

**ROOF SIZE:**

8,000 sq. ft.

**ROOF PANELS:**

Western States Metal Roofing 1"  
Snaplock Standing Seam

**COATING:**

Western States Metal Roofing

**UNDERLAYMENT:**

Continental Materials, Inc.  
Secure Grip Max

**SEALANT:**

TiteBond

ALL PHOTOS © GREEN KNIGHT® METAL ROOFING.

[www.greenknight.com](http://www.greenknight.com)



The roof on this home was originally constructed using cement barrel tiles. The tiles were cracked, moldy and filthy and the roof was leaking in several areas. The homeowner desired a more modern appearance for the home and, with the help of the Green Knight® project Consultant, Brett Laughlin, chose a snap lock standing seam option in a beautiful Black Ore Matte paint finish from Western States Metal Roofing.

This home sits on a hill which overlooks downtown Austin, Texas.







Scan to  
visualize!



Contact us: [mwicomponents.com](https://www.mwicomponents.com) | 800-360-6467

**Get ideas flowing with MWI Components' new 3D Visualizer!**

OR talk to IdeaRoom about adding MWI's products to your designer!

## PROJECT

# GUEST HOUSE

**STARR RANCH SANCTUARY**

**■ TRABUCO CANYON, CALIFORNIA**

**INSTALLER:**

McCormack Roofing

**CONTRACTOR:**

McCormack Roofing

**ROOF PANELS:**

Westlake Royal Roofing  
Solutions™ Unified Steel Stone  
Coated Roofing, Granite Ridge  
in English Suede

**UNDERLAYMENT:**

Westlake Royal™ MetalSeal HT  
Underlayment

**INSULATION:**

R-30 Blown in Insulation

<https://westlakeroyalroofing.com>





## Stone Coated Steel Roof Enhances Structure with Fire Protection

**T**he 4,000-acre Starr Ranch is a wildlife sanctuary and regional outpost of the national Audubon Society in Orange County, California. Through the dedication and time of volunteers, the sanctuary aims to protect native bird, among other, animal species along with endangered coastal sage grub.

For decades, many visiting volunteers have stayed overnight in a five-bedroom residence on the protected land. Recently, however, the home's roof had fallen into disrepair, showing serious signs of wear. Woodpeckers had drilled holes, inserting acorns, and mountain mice had infiltrated. Equally serious, the roof needed an upgrade to help protect the structure from the fire risk endemic in the region.

McCormack Roofing was brought in to replace the residence's original 1981 roof. The contractor team suggested Westlake Royal Roofing Solutions™ Unified Steel Stone Coated Roofing for the retrofit. The extremely lightweight material, which was ultimately installed over two layers of underlayment, benefits from the structural strength of steel. The durable, Class A fire rated roof also protects from hail and wind and is recyclable. In addition to installing the roof, McCormack Roofing cleaned out the structure's attic, removed old insulation and blew in replacement R-30 insulation. The end result was a home once again habitable for Starr Ranch volunteers eager to protect the region's environment and species.

# BUILDING CONNECTIONS

East Coast Fasteners produces durable, long lasting fasteners for all combinations of building materials.

- Quick Ship Program
- Extended Warranties
- Colors to match any rollformed steel
- High quality products for any application

East Coast Fasteners...**Building Connections** for the construction industry.



800.558.5895 • [www.plyco.com](http://www.plyco.com)

**The FASTEST, SHARPEST, CLEANEST Drilling Fasteners Available!!**

Ply-Lo Extended • Ply-Lo Extreme • Ply-Lo Driller • Ply-Fast • Metalfast  
Stainless Steel • Ply-Lo Low Profile • Flashers • Closures • Wood Deck

## PROJECT

# MUNICIPAL

## VAL VERDE COUNTY COURTHOUSE ■ DEL RIO, TEXAS

**ARCHITECT:**

Larmour & Watson

**INSTALLER:**

PMR Roofing

**CONTRACTOR:**

PMR Roofing

**ROOF SIZE:**

6,500 sq. ft.

**ROOF PANELS:**

EXCEPTIONAL® Metals' EM BattenLok® HS 24-gauge standing seam roof panels

**FASTENERS:**

Duro-Last #12

**SNOW/RAIN MANAGEMENT:**

Duro-Last Drains

**INSULATION:**

Duro-Fleece 60 mil

**SEALANT:**

Duro-Grip CR 20 HFO Adhesive

**OTHER COMPONENTS:**

- EXCEPTIONAL Metals' EM Craftsman™ Series roof panels
- AllTerm® 6" 2-piece compression metal cleat and cover

<https://exceptionalmetals.com>



When hail damaged the historic Val Verde County Courthouse roof in March 2020, not just any material or contractor could replace the octagonal dome. PMR Roofing, an authorized contractor for the Texas Municipal League (TML) and its insurer, the Texas Association of Counties (TAC), was up for the challenge.

The Texas Historical Committee approved the EXCEPTIONAL Metals' EM Craftsman Series silver metallic. The 20-year warranty from Duro-Last met the guidelines from TML and TAC.







# ADVANCED ARCHITECTURAL

SHEET METAL & SUPPLY

*We service your needs with consistent quality, workmanship and knowledge*

It's part of the reason customers come back to us time after time.

Maximize your profits by decreasing your inventory.

Reduce man hours - let us fabricate, you install.

98% of our American-made products are made-to-order and are manufactured inhouse. Our products are made from domestic metal and custom crafted to your specifications.

*Contact us today to see how we can streamline your process and maximize your profits!*

**(231) 861-0050 | [info@advarchsm.com](mailto:info@advarchsm.com) | [www.advarchsm.com](http://www.advarchsm.com)**



## PROJECT

# AGRICULTURAL

## BARN RESTORATION ■ LYKENS VALLEY, PENNSYLVANIA

### INSTALLER:

Stable Hollow Construction,  
Manheim, Pennsylvania

### CONTRACTOR:

Stable Hollow Construction

### ROOF PANELS:

AB Martin ABM G100 Panel

### COATING:

Sherwin Williams WeatherXL,  
Textured Black

### SNOW MANAGEMENT:

Levi's Building Components  
Snowdefender 4500 in Black  
Textured

### OTHER:

AB Martin Soffit, Black Textured  
Triple 4

[www.levisbuildingcomponents.com](http://www.levisbuildingcomponents.com)



This is a bank barn restoration on a mountain edge property in the Lykens Valley of Central Pennsylvania. The homeowner decided they wanted to restore the barn rather than tear it down. About half of the original barn framework was kept. The foundation of the original barn was left in place.

The homeowner went with a Cypress Wood Exterior and ABM G100 Textured Black with matching Levi's Snowdefender 4500 in Black Textured SuperDurable Powder.

It is always nice to see an old barn restored instead of replaced.







**Raytec Manufacturing**

**RaytecLLC.com**

**METAL PARTS THAT FIT**

**CUSTOM METAL  
FABRICATING**

**QUALITY  
METAL  
PRODUCTS**

- SEAMLESS GUTTER ACCESSORIES
- ROOFING PRODUCTS
- STORAGE SHED TRIM

LASER CUTTING  
CNC PUNCHING  
NOTCHING  
SHEARING  
FORMING

**Hangfast®**

Gutter Hanger



**Hangtite™**

Gutter Hanger  
with Clip



**REAL®**

Gutter Cover



**FLASHING**

- Step
- Apron
- Roll



**Rezist™**



SERVING THE  
Seamless Gutter & Roofing Industry  
FOR OVER 40 YEARS

**RaytecLLC.com | Sales@RaytecLLC.com | 877-800-2500**

## PROJECT

# RESIDENTIAL

## PRIVATE HOME ■ PHOENIX, ARIZONA

**ARCHITECT:**

Bob Bacon, RJ Bacon Design

**INSTALLER:**

Twin City Sheet Metal

**CONTRACTOR:**

Tom Archer Custom Homes & Design, LLC

**ROOF SIZE:**

16,000 sq. ft.

**FASTENERS:**

DB Fastener #10 1 1/2" HEX Screws and 1/8" rivets

**SEALANT:**

Bronze Dow Corning Trademate Silicone Sealant

**ROOF PANELS:**

CMG / Ultra Corrugated Panels & Twin City Sheet Metal / Custom Flush Seam Panels

**COATING:**

CMG / Dark Bronze (custom finish on both sides)

**UNDERLAYMENT:**

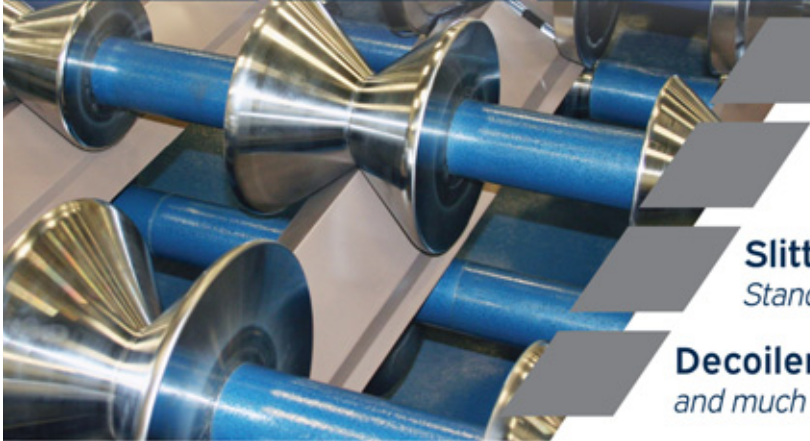
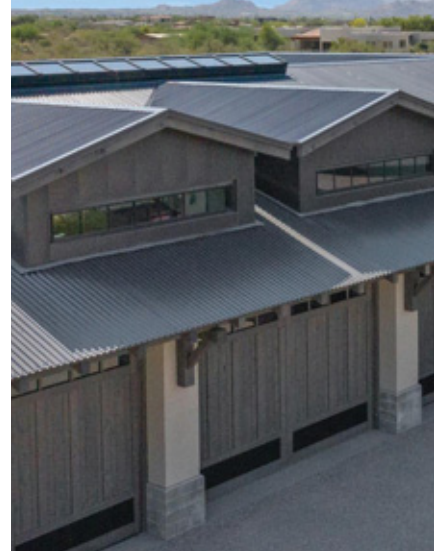
FT Synthetics / FT Platinum HTSA Underlayment

[www.cmgmetals.com](http://www.cmgmetals.com)



**T**his roof features custom fabricated flush panel gabled ends with corrugated panels fastened directly to the exposed timber purlins. To help make the exposed underside of the roof more visually appealing, Twin City Sheet Metal recruited CMG for a custom paint finish. This steel was custom coated in CMG's Dark Bronze finish on both sides, providing a very cohesive look to anyone passing underneath. CMG's Ultra Corrugated panels were used to provide a contemporary aesthetic that draws back to the designs of classic metal roofing.





**Panel Rollformers**  
*Titan, Signature & Patriot*

**Trim Rollformers**  
*Single & Multi Profiles*

**Slitting Lines**  
*Stand Alone, Cut to Length, & Slit to Recoil*

**Decoilers, Upenders, Shears**  
*and much more!*

**The Affordable Rollforming  
Equipment Manufacturer**



A 30 YEAR  
HERITAGE



888.284.6794 | [www.mrsrollform.com](http://www.mrsrollform.com)  
info@mrsrollform.com  
4511 N Freya St. | Spokane, WA 99217

**MRS**  
METAL ROLLFORMING SYSTEMS



## PROJECT

# RESIDENTIAL

## 4/WAY HOUSE ■ TOPANGA, CALIFORNIA

**ARCHITECT:**

Deegan-Day Design & Architecture, Inc.; Los Angeles

**INSTALLER:**

Zinc installed by Atlas Sheet Metal, Irvine, California

**CONTRACTOR:**

Kent Snyder Construction, Newport Beach, California

**ROOF SIZE:**

Appx. 3,000 sq. ft.

**ROOF PANELS:**

Rheinzink panelized standing-seam architectural grade zinc

**FINISH:**

Rheinzink-prePATINA® Graphite Grey

**FASTENERS:**

Stainless steel fasteners and clips

**VENTILATION:**

Vented Ridge Cap

**SEALANT:**

Dow Corning

**UNDERLAYMENT:**

Delta Mat

**SOLAR ATTACHMENTS:**

S-5! PVKIT®

[www.rheinzink.us](http://www.rheinzink.us)



**D**eegan-Day Design & Architecture designed the 4/Way House as a weekend retreat to maximize natural scenic views, while taking a protective stance against the elements including wildfire.

Supporting the project's distinctive appearance and climate-specific performance requirements, the architectural team specified RHEINZINK-prePATINA® graphite-grey architectural-grade zinc on its roof and exterior wall cladding. PHOTOGRAPHER: ©TAIYO WATANABE, ATELIER TAIYO ARCHITECTURE PHOTOGRAPHY; COURTESY RHEINZINK.





**EPDM**  
coatings

PH: 888-525-3002

WWW.EPDMCOATINGS.COM

**FIX ROOF LEAKS ONCE!**

The **ONLY** Liquid BUTYL  
Rubber In The World  
**WITH THESE BENEFITS**

Fully Stocked Ready To Ship



- One Coat-Never a Primer needed
- Proprietary solvent-based system allows for unique chemical cross-linking to occur
- Applies directly to 90% of all roof types
- Great for pitch or flat roof
- Rust inhibitor-adhesion promotor and UV inhibitor
- Built in Mildewcides
- Withstands ponding water 365 days a year
- ASTM certified
- Cool Roof Rated Council
- Custom colors are available
- Call Today for Volume Pricing !!



## PROJECT

# RESIDENTIAL

PRIVATE HOME ■ GREAT FALLS, MONTANA

**ARCHITECT:**

Peter Northcott

**INSTALLER:**

Rick Lieberg

**CONTRACTOR:**

HiLine Construction

**ROOF SIZE:**

5,200 sq. ft.

**ROOF PANELS:**

Montana Steel Stone Coated Steel with hidden fasteners

**FASTENERS:**

2" screw

**UNDERLAYMENT:**

Synthetic

**SEALANT:**

Through the Roof

**OTHER:**

Montana Steel:

- Valley, Hip and Rake Metal
- 1-piece Stone-Coated Drip Edge and Starter
- Hidden fastener Stone-Coated Steel Ridge, Rake and Hip Cap
- Stone-Coated roof to wall pieces
- Stone-Coated Steel Valley Cover



**T**his residence was re-roofed over existing asphalt shingles with a Stone Coated Steel Roof System. The Montana Steel system is an all hidden fastener roof system with interlocking technology.

A unique 12" J Channel was used for the rake, back to back on the hip and back to back with tape to create a valley. All trims are 10'.



[www.montanasteel.com](http://www.montanasteel.com)



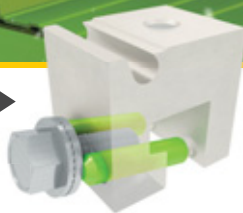


## SNOWTITAN<sup>®</sup> SPANS THE DISTANCE SNOW RETENTION FOR LOW-SLOPE ROOFS & WIDE SPANS

Handles up to 48" spans

### PATENTED NON-PENETRATING SLIDING-PIN CLAMPS

Pins apply equal pressure with  
just a single fastener



### ONE-OF-A-KIND STRONG CLAMPING CLAW

No assembly, lower  
labor, fewer parts



**ACECLAMP<sup>®</sup>**  
Innovative Roofing Solutions™

Orders: 860-773-4144  
[www.AceClamp.com](http://www.AceClamp.com)



715-644-0765 — Fax: 715-644-0994

**Hixwood Metal is the premier source for all your  
steel coil, blank flat stock, and slit coil needs.**



- Striving every day to meet the most stringent demands of our quality minded coil customers.
- We have over 20 smooth and 15 textured colors available in the ever popular BeckryTech H.D.P.E paint system.



**Give us a call for all your coil and building accessory needs!**

## PROJECT

# RESIDENTIAL

PRIVATE HOME ■ BALDWIN, MISSISSIPPI

**CONTRACTOR:**

Kevin Nichols, Cross  
Construction, Booneville  
Mississippi

**ROOF PANELS:**

ProVia 26-ga. Stamped Metal  
Panel in Larkstone Slate

**COATING:**

ProVia GalvaTec™ finish system

**FASTENERS:**

#10 x 1" and #10 x 2" hex  
head screw

**UNDERLAYMENT:**

SharkSkin Ultra; SharkSkin  
Ultra SA along eaves and in  
flashing areas



[www.provia.com](http://www.provia.com)





**T**his new build outside of Tupelo, Mississippi features ProVia stamped panel metal roofing. The homeowners, one of whom works for ProVia, wanted something stronger than the asphalt architectural shingles they had replaced twice on their previous home (once due to hail damage). Metal roofing was their preference, and ProVia's Larkstone Slate profile complemented the home's style and exterior color scheme.

The homeowners wanted a roof that could shield their home from the elements. The high temperatures and humidity in Mississippi often lead to intense storms, and the 26-gauge galvanized steel panels give ProVia roofing a Class 4 impact resistance rating, protecting it from hail and storm debris. ProVia metal roofing uses a highly reflective and emissive GalvaTec™ finish that helps keep the roof cooler in warm climates, and its locking installation system withstands windspeeds up to 180 mph – a big advantage when fierce storms hit.

## PROJECT

# COMMERCIAL

## PARALLEL PRODUCTS ■ NEW BEDFORD, MASSACHUSETTS

**CONTRACTOR/INSTALLER:**

Supplied by Messco Building Supply

**EPC:**

ECS Electric, Inc.

**ROOF SIZE:**

150,000+ sq. ft.

**ROOF PITCH:**

Varies from 1/2:12 to 3:12

**ROOF PANELS:**

Metallic, 24" Double Lock Standing Seam, 24 ga.

**COATING:**

Galvalume, Silver

**INSULATION:**

6" insulation over the purlins w/ a WMP-10 vapor barrier

**MODULES:**

CSUN

**INVERTER:**

Solectria

**MOUNTING/RACKING:**

S-5! PVKIT® (6500);  
S-5-V™ Mini clamp (6500)

[www.s-5.com](http://www.s-5.com)



**P**arallel Products of New England (PPNE) repurposes and recycles common materials such as glass, aluminum and recyclable plastic containers collected through Massachusetts' bottle deposit program. The company recently completed its Duchaine Boulevard project, a center for processing and technology development. The new facility features a standing seam metal roof with 1.9 MW of rooftop solar PV. The EPC contractor recommended the S-5! PVKIT® – a direct-attach™ rail-less solar mounting solution to provide a secure, economical and penetration-free method for attaching the solar modules to the metal roof.





# SHOWTIME

Punch Your TicketS to our next EVENTS!

FROM THE  
PUBLISHER'S OF  
ROLLFORMING  
MAGAZINE



**2023**  
**Construction**  
**Rollforming**  
**Show**

**SEPTEMBER 27-28, 2023**  
Duke Energy Center, Cincinnati, OH  
[constructionrollformingshow.com](http://constructionrollformingshow.com)

ADMIT 1

FROM THE  
PUBLISHER'S  
OF GARAGE,  
SHED &  
CARPORT  
MAGAZINE



**2024**  
**GARAGE • SHED • CARPORT**  
**BUILDER**  
**SHOW**

**JANUARY 24-25, 2024**  
Knoxville Convention Center, Knoxville, TN  
[garageshedcarportshow.com](http://garageshedcarportshow.com)

ADMIT 1

FROM THE  
PUBLISHER'S  
OF FRAME  
BUILDING  
NEWS



**2024**  
**POST-FRAME**  
**BUILDER**  **SHOW**

**JUNE 19-20, 2024**  
Branson Convention Center, Branson, MO  
[postframebuildershow.com](http://postframebuildershow.com)

ADMIT 1

For More Information Contact Gary Reichert:  
[gary@shieldwallmedia.com](mailto:gary@shieldwallmedia.com) ■ PH 715-252-6360

## PROJECT

# RESIDENTIAL

PRIVATE HOME ■ MONTGOMERY, INDIANA

**INSTALLER:**

A&L Construction

**CONTRACTOR:**

Graber Post Buildings

**ROOFING PANELS:**

Westlake Unified Steel™ Stone Coated Roofing, 26 ga.

**VENTILATION:**

Unified Steel™ Ridge Vent;  
RidgeMaster® Plus Ridge Vent

**FASTENERS:**

Westlake Fasteners Climaseal Coated Screws

**GUTTERS:**

Graber Post 6" K style gutters

**UNDERLAYMENT:**

Westlake Royal™ MetalSeal HT SwiftGuard®

**OTHER:**

Westlake Wakaflex® flashing tape around penetrations and flashings



[www.graberpost.com](http://www.graberpost.com)





**U**nified Steel™ Stone Coated Roofing is a lightweight roofing solution with unsurpassed durability, performance, and protection. Backed by one of the most comprehensive, limited fully transferable roofing warranties in the business today, Unified Steel is available in popular profiles and colors to suit any architectural style. As any homeowner knows, when upgrading/making home improvements on a house or business, you don't want to replace them with products that you know will be worn out in less than 15 years. This was just the case for this beautiful home in Montgomery, Indiana. The owners wanted to add an attractive look of asphalt, but wanted the durability and life of steel; they chose the Cottage style product in the color of Timberwood HD. It complimented the house perfectly, and will keep the house protected and dry for many years to come.

## PROJECT

# RESIDENTIAL

PRIVATE HOME ■ SYRACUSE, INDIANA

**INSTALLER:**

Premier Roofing

**CONTRACTOR:**

Premier Roofing

**ROOF SIZE:**

6,000 sq. ft.

**ROOF PANELS:**

Premier Roofing 1" fastener  
flange standing seam

**COATING:**

Sherwin-Williams Textured  
Charcoal

**VENTILATION:**

Premier Roofing PremierVent

**FASTENERS:**

Direct Metals Inc.

**SNOW MANAGEMENT:**

Premier Clamp On Snow Stops

**UNDERLAYMENT:**

Titanium

**SEALANT:**

Titebond Sealant



The customer had ongoing problems with his shingle roof and wanted a roof that is maintenance-free.



[www.premierroofingindiana.com](http://www.premierroofingindiana.com)



## PROJECT

# RESIDENTIAL

## PRIVATE HOME ■ MCKEAN, PENNSYLVANIA

**INSTALLER:**

Distinctive Metal Roofing

**CONTRACTOR:**

Distinctive Metal Roofing

**ROOF SIZE:**

4,330 sq. ft.

**ROOF PANELS:**

Isaiah Industries, Kassel and Irons KasselWood stamped metal shingles

**COATING:**

Kynar, Weathered Cedar

**VENTILATION:**

Soffit/ridge

**FASTENERS:**

Concealed ring shank nails

**SNOW/RAIN MANAGEMENT:**

Snow Blox

**UNDERLAYMENT:**

Titanium UDL 30

[www.distinctivemetalroofing.com](http://www.distinctivemetalroofing.com)



**R**esidential home with KasselWood metal shingles installed over a single layer of asphalt shingles.



## PROJECT

# MUNICIPAL

## PRINCE FREDERICK VOLUNTEER FIRE DEPARTMENT ■ PRINCE FREDERICK, MARYLAND

**ARCHITECT:**

Bignell Watkins Hasser Architects

**INSTALLER:**

Orndorff & Spaid,  
Beltsville, Maryland

**CONTRACTOR:**

S.E. Davis Construction

**ROOF SIZE:**

21,000 sq. ft.

**ROOF PANELS:**

PAC-CLAD Tite-Loc Plus,  
Dark Bronze

**FASTENERS:**

Buildex 12-14 Tech 3,  
#14 Pancake 1.25"

**SNOW MANAGEMENT:**

S-5! ColorGard

**RAIN MANAGEMENT:**

8" shop fabricated box gutter w/  
shop-fabricated 4" x 5" downspouts

**UNDERLAYMENT:**

Carlisle Wip 300 HT

**SEALANT:**

Vulkum 116 Caulking

**OTHER:**

PAC-CLAD Reveal wall and  
soffit panels, Dark Bronze

[www.pac-clad.com](http://www.pac-clad.com)



**D**esigners wanted to make this fire station a landmark to people in the area as they came into town. The building design conveys a welcoming presence with a modern take on traditional architecture of the area. The façade highlights the building's five glass apparatus-bay doors. The doors' curves help balance the otherwise horizontal orientation of the building's long front elevation, as do two flat-roofed tower-style bump-outs that also help define interior functions. PHOTOS COURTESY OF HORTONPHOTOINC.COM







## PROJECT

# AGRICULTURAL

## HOBBY SHOP/GARAGE ■ THORP, WISCONSIN

### CONTRACTOR:

Larson Construction, Knapp,  
Wisconsin

### BUILDING SIZE:

48' x 64' x 16' w/ 16' lean-to

### ROOF PITCH:

4:12

### ROOF PANELS:

Hixwood Super-Rib 100, 28 ga.

### COATING:

Becker's BeckryTech Charcoal

### VENTILATION:

MWI Components Ventilated  
Soffit, Marco Industries Ridge  
Vent

### FASTENERS:

Plyco / East Coast Fasteners

### INSULATION:

Owens Corning fiberglass in  
walls; Applegate cellulose in  
ceiling

### OTHER:

Walls: Hixwood Super-Rib 60 29  
ga., Light Gray. Interior is fully  
lined with Hixwood White Liner  
Panel, 29 ga.

[www.hixwood.com](http://www.hixwood.com)



The owners needed a large building where they could do maintenance on machinery and store their personal vehicles. This a 48' x 64' hobby shop/garage combination building with 16' sidewalls and 16' lean-to provides all the space and shelter they need to fit the bill. Additionally, it's fully insulated and air conditioned!



## PROJECT

# RESIDENTIAL

PRIVATE HOME ■ PISCATAWAY, NEW JERSEY

**ARCHITECT:**

Square Center LLC Architecture  
& Design

**INSTALLER:**

MBL Construction

**CONTRACTOR:**

Suntuity Home

**ROOF PANELS:**

Englert A1500 Snap Lock  
Architectural Standing Seam  
Metal Roof System

**COATING:**

Dark Bronze

**VENTILATION:**

Englert Louvered Z Closures

**FASTENERS:**

Englert 1" Pancake Zinc Screws

**SNOW MANAGEMENT:**

S-5! ColorGard® System

**UNDERLAYMENT:**

Englert High Temp Ice & Water  
Shield

**SOLAR ATTACHMENTS:**

S-5! PVKIT® (in black),  
PVKONCEAL™ Module Skirt

PHOTOS COURTESY OF OLIVER FRAZIER, SUNTUITY SOLAR



Suntuity Home and Englert teamed up to build a one of a kind completely sustainable home in New Jersey. This breathtaking new home is the first self sustaining, LEED Platinum Certified net zero energy project built in central New Jersey and first ever built with ICF Insulated Concrete Forms. The home features 80 rooftop solar modules on a 5,000 sq. ft. Englert metal roof. The roof profile selected is the Englert A1500 snap lock panel system in dark bronze which covers the main roof as well as the outdoor kitchen that sits beside the pool.



[www.suntuity.com](http://www.suntuity.com); [www.englert.com](http://www.englert.com)

# Check Out Our Digital Magazine Websites

[www.ruralbuildermagazine.com](http://www.ruralbuildermagazine.com)

[www.framebuildingnews.com](http://www.framebuildingnews.com)

[www.readmetalroofing.com](http://www.readmetalroofing.com)

[www.rollformingmagazine.com](http://www.rollformingmagazine.com)

[www.garageshedcarportbuilder.com](http://www.garageshedcarportbuilder.com)

[www.roofingelementsmagazine.com](http://www.roofingelementsmagazine.com)

## GOLDEN RULE FASTENERS, INC.

MOST ORDERS SHIP SAME-DAY

- ◆ ROOFING SCREWS
- ◆ DECK SCREWS
- ◆ METAL BUILDING SCREWS
- ◆ RIVETS
- ◆ BUTYL TAPE
- ◆ CAULK
- ◆ PIPE FLASHINGS FOR METAL ROOFING
- ◆ PIPE FLASHINGS FOR SHINGLE ROOFING
- ◆ RETROFIT PIPE FLASHINGS
- ◆ SOLID FOAM CLOSURE STRIPS
- ◆ VENTED CLOSURES
- ◆ RIDGE VENT MATERIAL
- ◆ NUTSETTERS AND BITS
- ◆ PEEL & SEAL

*When you need it fast, call Golden Rule Fasteners!*



Ph: (334) 283-4030

Fax: (334) 283-4032

[www.goldenrulefastenersinc.com](http://www.goldenrulefastenersinc.com) Email: [info@goldenrulefastenersinc.com](mailto:info@goldenrulefastenersinc.com)



## PROJECT

# RESIDENTIAL

## PRIVATE HOME ■ WHITESTOWN, INDIANA

**INSTALLER:**

Cornett Roofing Systems

**CONTRACTOR:**

Cornett Roofing Systems

**ROOF SIZE:** 26 squares

**ROOF PANELS:**

Modern Metal Roofing, 24-ga.,  
Powder Coated Metal Shake  
Series Panels

**COATING:**

Kynar, Colonial Slate

**VENTILATION:**

Soffit/Ridge

**FASTENERS:**

SFS INK

**UNDERLAYMENT:**

Tri-Shield Synthetic  
Underlayment

<https://cornettroofing.com/>



This homeowner desperately wanted a metal roof for her home but was struggling to get approval from her Home Owner's Association. Cornett Roofing Systems introduced the client to the various styles that are manufactured by Modern Metal Roofing. These include: metal shake, metal tile, metal shingle and standing seam. Together the homeowner and Cornett Roofing agreed that the metal shake series or the metal shingle series would be the best options to present to her HOA. The HOA agreed to using either style after seeing previous installations. The home owner made the final decision to go with the Metal Shake Series for her one-story home. This project is unique because it shows how metal roofing has transformed over the years and how much it has changed since regular barn metal roofing. It is apparent that many homeowners are not aware of the various styles now available to simulate traditional roofing and still have to jump through many HOA hoops to get a lifelong roof. This project was a simple, one-story home and just by adding a metal roof the entire look was transformed. The homeowner is beyond pleased with the final look and having the peace of mind that comes with a metal roof.

## PROJECT

# MUNICIPAL

## FIREHOUSE SHELTER ■ BIRMINGHAM, ALABAMA

**ARCHITECT:**

Poole & Company Architects, LLC

**INSTALLER:**

Dunn Building Company

**CONTRACTOR:**

Dunn Building Company

**ROOF PANELS:**

24" x 24 ga SSR

**COATING:**

Kynar 500

**INSULATION:**

Thermalift Insulation System  
(R-32.9)

[www.mbma.com](http://www.mbma.com)



Birmingham's Firehouse Shelter is a \$5.8 million facility designed to house 112 people. Firehouse Ministries was working with an extremely limited budget. In addition, the need to withstand anticipated heavy use made durability a major priority for the new facility. At the same time, the organization wanted to create a warm, welcoming environment, so the building had to offer aesthetics and amenities as well.

The new facility also provides respite care, local food programs and GED classes in a new computer lab.





## PROJECT

# RESIDENTIAL

PRIVATE HOME ■ WAKARUSA, INDIANA

**INSTALLER:**

Premier Roofing

**CONTRACTOR:**

Premier Roofing

**ROOF SIZE:**

5,500 sq. ft.

**ROOF PANELS:**

Premier Roofing 1" fastener  
flange standing seam

**COATING:**

Sherwin-Williams Textured  
Burnished Slate

**VENTILATION:**

Premier Roofing PremierVent

**FASTENERS:**

Direct Metals Inc.

**UNDERLAYMENT:**

Titanium

**SEALANT:**

Titebond Sealant

[www.premierroofingindiana.com](http://www.premierroofingindiana.com)



The customer was getting ready to retire, so they wanted a maintenance-free roof system on their home.

## PROJECT

# RESIDENTIAL

PRIVATE HOME ■ KNOXVILLE, TENNESSEE

**INSTALLER:**

FLOW Roofing, Knoxville,  
Tennessee

**ROOFING PANELS:**

True Metal Supply True Blue  
Tuff-Rib, 29 ga.

**COATING:**

Sherwin-Williams Coil Coatings  
WeatherXL®

**FASTENERS:**

Atlas Building Products Wood  
Ultimate® Fasteners

**UNDERLAYMENT:**

True Metal Supply True  
Synthetic Underlayment

**VENTED CLOSURES:**

Marco Industries LP2

[www.truemetalsupply.com](http://www.truemetalsupply.com)

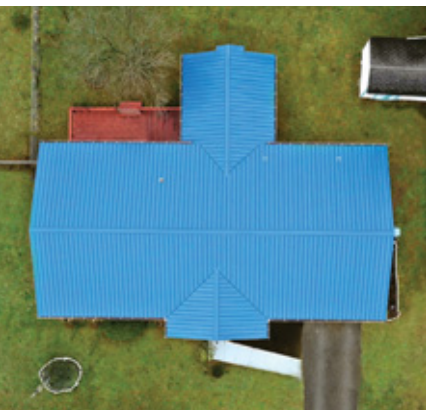
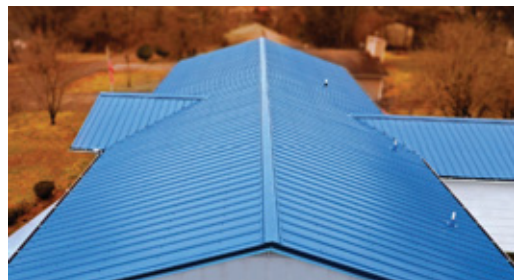


## Residence Revived with True Blue Tuff Rib

While purchasing a metal roof is a great investment, it's not always an easy process, especially if you've only ever dealt with asphalt shingles. When a homeowner in Knoxville, Tennessee, was watching TV, she came across a True Metal Supply commercial. Although she had no knowledge of the industry, the True Metal Supply team assisted in the process: from lining up financing, to determining the right metal roofing option for her needs, to, lastly, finding her a contractor to install the new metal roof.

Because the homeowner needed a cost effective solution that would still offer a lifetime warranty on the

paint coatings — along with matching her home's exterior aesthetic — the True Crew directed her toward True Blue Tuff-Rib. Tuff-Rib is a classic, through fastened metal roofing and siding panel made from the finest American roofing steel. It serves as an excellent residential (and light commercial/agricultural) panel, is manufactured in Knoxville from 29 ga. steel, and maintains the True Durability standard, all while presenting itself as one of the most cost-effective metal roofing options available.





## BUSINESS CONNECTIONS

**Golden Rule**  
FASTENERS  
**QUALITY PRODUCTS  
COMPETITIVE PRICES  
& MOST ORDERS SHIP THE SAME DAY**

- Screws • Closures • Ridge Vent
- Pipe Flashings • Butyl Tape • And much more!

Ph: (334) 283-4030 - FAX (334) 283-4032  
info@goldenrulefastenersinc.com - www.goldenrulefastenersinc.com

*Acu-Form Roll Forming Equipment*  
**MANUFACTURER OF ROLL FORMING EQUIPMENT**

PHONE: (330) 674-4003 EMAIL: WAYNE@ACU-FORM.COM  
FAX: (330) 674-4035 WEBSITE: ACUFORMEQUIPMENT.COM

**METAL OF HONOR 2023**

*Acu-Form*  
ROLL FORMING EQUIPMENT

**LEVI'S**  
BUILDING COMPONENTS

**Did you know...**  
Currently over 75% of our orders are shipped complete same or next day!

If service matters, call (877) 897-7020 or visit [www.levisbuildingcomponents.com](http://www.levisbuildingcomponents.com) today for the Levi's experience!

**METAL OF HONOR 2023**

**Your Single Source Equipment Provider**

- Pre-Cut Rollformers
- Post-Cut Rollformers
- Trim Folders
- Trim Rollformers
- Slit & Recoil Lines
- Controls

**THE BRADBURY GROUP**

1.620.345.6394  
[bradburygroup.com](http://bradburygroup.com)

**METAL OF HONOR 2021**

**RECOILING**  
CALL. CUT. DONE.

**METAL EXTERIORS**

- Precision slitting
- Custom blanking
- 36 color options
- 26 guage steel

**SHERWIN-WILLIAMS**  
Paint Systems  
**WeatherXL**

CALL US: 419-896-2200 [metalexteriors.com](http://metalexteriors.com)

**WRAP THEIR BUILDING UP WITH WARMTH! NEW!!!**

**FAST • EASY • LOW COST**

**RetrofitClip**

[www.retrofitclip.com](http://www.retrofitclip.com) • [retrofitclip@hotmail.com](mailto:retrofitclip@hotmail.com)  
1-800-431-9661 • Manitoba, Canada

**PSI Green Post™**  
Planet Saver Industries

**THE MOST AFFORDABLE, ALL-IN-ONE SOLUTION FOR IN-GROUND POST DECAY AND UPLIFT RESTRAINT**

P (610) 377-3270  
[www.planetsaverind.com](http://www.planetsaverind.com)

Made in the USA

**FASTER THAN EVER**

**SAFE-WAY**  
GARAGE DOORS

CALL US TODAY!  
**(877) 775-1670**  
[SAFEWAYDOOR.COM](http://SAFEWAYDOOR.COM)

**OUR LEAD TIMES WILL BLOW YOU AWAY!**

## BUSINESS CONNECTIONS

Manufacturers of Residential & Commercial Garage Doors



Arthur, IL.  
61911



sales@kevmar.net  
217.543.2828

**DELIVERANCE**  
ANTI-SHOCK SAFETY HAMMERS  
TOUCHLESS™

**ANTI-SHOCK SAFETY HAMMERS**

Drive Nails & Spikes Faster!  
Reduce Repetitive Use Injuries

[www.DeliverancePoweredSafetyHammers.com](http://www.DeliverancePoweredSafetyHammers.com)

**TAKE THE GUESSING OUT OF THE INSTALLATION.**  
Will the pipe flashing you have handle the correct pitch?

The NEW and IMPROVED Master Flash® Roof Pitch Data Calculator  
From the largest to the smallest Pipe Boots Available

<https://rpc.aztecwasher.com>

Master Flash®  
Roof Pitch Data  
Calculator

2023 METAL OF HONOR

PREMIUM QUALITY  
ROLLFORMING MACHINERY

PANEL LINES CZ PURLIN LINES  
TRIM LINES CHANNEL LINES  
SLITTING LINES ROLL UP DOOR LINES

ASC MACHINE TOOLS, INC.  
MADE IN THE USA • EST. 1949  
2023 METAL OF HONOR

[WWW.ASCMT.COM](http://WWW.ASCMT.COM) TEL: (509) 534-6600

**DMI = BUILDING INVESTMENT PROTECTION**

Let DMI complete your building project  
with Code Approved & Warrantied:

HWY & PANCAKE FASTENERS • ANCHORS • PIPE FLASHINGS  
REFLECTIVE INSULATION • POLYCARBONATE PANELS  
SOLID & VENTED FOAM CLOSURES

[www.directmetalsinc.com](http://www.directmetalsinc.com) 855-800-8878

2023 METAL OF HONOR

**Everlast Metals**

ROOF AND WALL SYSTEMS

ASL NS  
SSL DL

CONTACT EVERLAST  
METALS FOR QUICK  
SERVICE ON SLIT COIL,  
FLAT SHEETS AND ALL  
OF YOUR EXTERIOR  
METAL BUILDING  
COMPONENT NEEDS.

OFFERING:

- Heavy Gauge Painted Steel or Aluminum
- Solid or Vented FP & RP Panels
- Double Folder Capabilities for Custom Trim or Hard to Find Wall Panels
- Up to 26 Standard Fluoropon® Colors Available
- Quick Turn Around for Slit Coil
- Ready to Ship Fluoropon® and Polyester Aluminum Flat Sheets
- Eight Concealed Fastener Standing Seam Profiles

PLANT LOCATIONS:  
Lebanon, PA 10 Enterprise Court 24 JR Mains Drive  
Lebanon, PA 17042 Bridgton, ME 04009

FOR MORE INFORMATION CALL: 800-418-5057 OR VISIT US AT [WWW.EVERLASTMETALS.COM](http://WWW.EVERLASTMETALS.COM)

20 YEAR

2023 METAL OF HONOR

**I BEAM SLIDING DOORS**

MADE IN USA

DOORS THAT WORK!

960 E Cemetery Ave, Chenoa, IL 61726  
815-945-3667 • [ibeamdoor.com](http://ibeamdoor.com)  
[ibeamdoor@gmail.com](mailto:ibeamdoor@gmail.com)

Productive  
Trim Solutions

Variobend  
SLINET

Hershey's  
METAL  
MEISTER

877-289-3030  
[info@hershaysmm.com](mailto:info@hershaysmm.com)  
[VariobendUSA.com](http://VariobendUSA.com)

2023 METAL OF HONOR





**THE COMPLETE DESIGN SOFTWARE  
FOR POST FRAME AND  
ALL METAL BUILDINGS!**

[SmartBuildSystems.com](http://SmartBuildSystems.com)  
303.579.6277




**STEEL PRODUCTS FOR  
THE METAL ROOFING &  
METAL BUILDING INDUSTRY**

*Understanding Superior Service*

**512-263-0954 • [unitedsteelsupply.com](http://unitedsteelsupply.com)**



**WE ADD THE VALUE TO THE METAL**




- Automation Systems
- Metal Construction Rollformers
- Coil Processing
- Forming & Fabrication
- Recondition Existing Machines

620-382-3751  
[www.marionmanufacturing.com](http://www.marionmanufacturing.com)



**Performance  
in Post Frame**



**PLYCO**  
CORPORATION

800.558.5895 • [plyco.com](http://plyco.com)



**Radiant Floor Heat!**

- Warm, Silent & Efficient
- Hot Water or Electric
- Tankless Hot Water
- Slabs
- Wood Floors
- Geothermal
- Wood Boilers

935 N. 275 W. Suite B • Angola, IN 46703  
**See us at [www.indianawarmfloors.com](http://www.indianawarmfloors.com)**  
260-668-8836 • 800-700-8830

**SAMCO**  
People. Products. Passion.

**Providing Complete Turnkey Roll Forming Solutions for Over 50 Years**



📞 1 416 285 0619  
🌐 [www.samco-machinery.com](http://www.samco-machinery.com)

**MATERIALS TRAILER**

DESIGNED FOR METAL ROOFING  
AND POLE BARN INDUSTRIES,  
TRANSPORTING BUILDING  
SUPPLIES AND  
RAW MATERIALS



**Pine Hill**  
Driven by You.

[PineHillTrailers.com](http://PineHillTrailers.com) | 717.288.2443

**LELAND Specialty Fasteners**

Master Grippers® • Grippers MDP®      Master Drillers®

Master Tappers®      Master Deckers®



Our Powder Coated paint system allows us to match your painted steel supplier's warranty.

**LELAND**  
INDUSTRIES INC.

Made in Canada

1.800.263.3393  
[www.lelandindustries.com](http://www.lelandindustries.com)

# EVENTS CALENDAR

## May

**May 8-10**

Cold-Formed Steel Engineers Institute (CFSEI) 2023 Annual Expo, Hilton New Orleans Riverside, New Orleans, Louisiana. [cfsei.org](http://cfsei.org)

## June

**June 7-10**

AIA Conference on Architecture Moscone Center, San Francisco, California. <https://conferenceonarchitecture.com/>

## July

**July 13-14**

Florida Roofing & Sheet Metal Expo (FRSA), Gaylord Palms Resort & Convention Center, Kissimmee, Florida. [floridarooft.com](http://floridarooft.com)

## September

**Sept. 23-25**

Western Roofing Expo, Paris Las Vegas, Las Vegas, Nevada. <https://westernroofingexpo.com/>

**Sept. 27-28**

Construction Rollforming Show, Duke Energy Convention Center, Cincinnati, Ohio. [www.constructionrollformingshow.com](http://www.constructionrollformingshow.com)

## October

**Oct. 4-6**

Roofing Contractors Association of Texas (RCAT) Texas Roofing Conference, Marriott Marquis Houston, Houston, Texas. [www.rcat.net](http://www.rcat.net)

**Oct. 18-20**

METALCON, Las Vegas Convention Center, Las Vegas, Nevada. [www.metalcon.com](http://www.metalcon.com)

## January 2024

**Jan. 24-25, 2024**

Garage, Shed & Carport Builder Show, Knoxville Convention Center, Knoxville, Tennessee. <https://garageshedcarportbuilder.com/show-registration/>

*Before making travel arrangements, check with the show producer to confirm there have been no changes to event dates, venue, or show hours. To have events included here, contact Karen Knapstein, 715.513.6767, [karen@shieldwallmedia.com](mailto:karen@shieldwallmedia.com). **MR***



## Manufacturer Of Metal Roll Forming Equipment

- Ag Panels
- Ridge Caps
- Hemmers
- Slitters
- Uncoilers
- Corners
- J Channels
- Rat Guards
- Wrappers
- Slit Lines
- Roll & Tables
- Post Cut Shears
- Custom Options Available



Commercial and residential construction use with D2 tool steel as a standard for our tooling.

Electric, Hydraulic or Mechanical Options

10550 TWP Road 262 Millersburg, OH 44654 P: (330) 674-4403 F: (330) 674-4035 [wayne@acuform.com](mailto:wayne@acuform.com) [acuformequipment.com](http://acuformequipment.com)

## DID YOU KNOW?

It costs less to buy a Business Card ad than it does to have cards printed.

**We even give your "cards" to more than 40,000 potential customers.**



**FOR MORE INFO CONTACT MISSY BEYER:**

[missy@shieldwallmedia.com](mailto:missy@shieldwallmedia.com) • 920-216-3007

**METAL ROOFING**

**Rollforming Magazine**

**Rural Builder**

**BUILDER**

**FRAMEBUILDING**

**ROOFING ELEMENTS**

**Metal Builder**



4TH  
ANNUAL

# 2023 Construction Rollforming Show



**DUKE ENERGY CENTER • CINCINNATI, OH**  
**SEPTEMBER 27-28, 2023**



**FOR MORE INFORMATION CONTACT GARY REICHERT:**  
**[gary@shieldwallmedia.com](mailto:gary@shieldwallmedia.com) • 715-252-6360**  
**[www.constructionrollformingshow.com](http://www.constructionrollformingshow.com)**



## Triangle Fastener Launches Catalog for Roll Formers

Triangle Fastener Corporation of Pittsburgh, Pennsylvania, has announced the release of its new market-specific catalog to target manufacturers of metal roofs, walls, and various other cladding materials.

This Selection Guide consolidates fasteners for attaching through-fastened and concealed-fastened panels and is designed to assist the customer in selecting and specifying the right fastener for the application.

The new catalog includes all the technical information for engineering and highlights inventory management programs that benefit purchasing. The new catalog is available in print and on [www.trianglefastener.com](http://www.trianglefastener.com).

Triangle Fastener is a leading provider of standard and specialty fasteners, sealants, and tools for metal construction industries. They have 23 locations and can provide job-site assistance, fastener recommendations, and product development.



Paul Delahunt

## Delahunt Joins Malco Products, SBC, Board of Directors

Malco Products, SBC, one of the nation's leading solution developers and manufacturers of a variety of high-quality tools for the building trades, announced that Paul Delahunt was recently appointed to its board of directors. The addition of Delahunt to the board builds upon other recent, strategic leadership appointments.

Delahunt is the past president of Renewal by Andersen Corporation, a \$950 million subsidiary of Andersen Corporation, the largest window and

door manufacturer in North America. In his role as president, Delahunt led the fastest growing and most profitable business within the Andersen enterprise, overseeing 4,000 associates including 900 in manufacturing. Before joining Andersen, he held leadership positions at Ecolab Inc., and Snap-On Incorporated.

Delahunt currently holds board positions across a variety of industries and nonprofits. He received an undergraduate degree from the University of Illinois, a master's degree from the University of Michigan and an MBA from the University of Chicago.

"We are very proud to welcome Paul to the Malco board of directors to continue building on our renewed focus on our core capabilities and market-focused planning initiatives," said Rich Benninghoff, president and CEO of Malco Products. "Paul's renowned leadership and expertise in the building industry will have a profound impact on our board as we map out and execute our strategic plans for the next stage of growth at Malco."

"I am excited to join the Malco board and to help Rich and his leadership chart the course for the next chapter in the history of a great Minnesota company and a great American brand," Delahunt added.



Mark Lawson

Scott Slone

## McElroy Metal Announces Personnel Changes

McElroy Metal announced that Mark Lawson, Vice President of Sales, is retiring after 38 years with the company. Scott Slone, the Midwest Regional Sales Manager, who has been with McElroy Metal five years, has been selected as the company's new Senior Director of Sales

**MR**

# VS-150

- 1" & 1-1/2" "Mech Lock" Standing Seam
- Snap Lock Panels & more!
- Quick and Easy profile changeover

Our most versatile, multiple profile machine.....forming seven 1" and 1-1/2" profiles.

## ROLLFORMER.

CHANGING THE SHAPE OF METAL

Ph: 215.997.2511 • Fx: 215.997.5544 • [www.rollformerllc.com](http://www.rollformerllc.com)  
Email John Dumke - [jdumke@rollformerllc.com](mailto:jdumke@rollformerllc.com)

1" & 1 1/2"

STANDING SEAM



# Get Free Business Exposure Here!

We publish a Project of the Month in each edition of our magazines to promote best design and construction practices. We have received feedback from readers that it's one of their favorite features in our magazines.

If you're a roofer or contractor, you can receive **FREE NATIONAL EXPOSURE** for your business (free PR!) by sending roof details, a component list, and a brief description. The component list should identify manufacturers and models so we can give them proper credit, too!

The general description can include details about what the customer wanted, special elements, any other features that make the project noteworthy.

**These editorial placements are absolutely free!**

## WHAT WE NEED:

- Component List
- Brief Description
- Three to five attractive high resolution images (at least one must be the entire roof).



COURTESY OF BECKERS GROUP

Submission is not a guarantee of publication. We reserve the right to edit content.

**If you have any questions about the Project of the Month, contact:**

Karen Knapstein • [karen@shieldwallmedia.com](mailto:karen@shieldwallmedia.com) • 715-513-6767

# Tell 100,000 subscribers about your new product

**If your company has developed a new product for builders or contractors, email a new product announcement to one of the contacts listed below for possible publication in our business-to-business magazines.**

**Include a clear, high resolution image of the product (no logos or advertisements), along with a brief description of your product and the problems it solves.**

**Submission is not a guarantee of publication. We reserve the right to edit all submissions for content, length, and clarity.**



**Metal Roofing Magazine; Roofing Elements Magazine; Rollforming Magazine: Karen Knapstein – karen@shieldwallmedia.com**  
**Rural Builder; Frame Building News; Garage, Shed & Carport Builder: Rocky Landsverk – rocky@shieldwallmedia.com**

**GET GUARANTEED PLACEMENT BY ADVERTISING: Missy Beyer – missy@shieldwallmedia.com • 920-216-3007**





## NEW PRODUCTS

### RugGear Industrial Smartphone

RugGear, a developer and manufacturer of rugged mobile devices for professional use is expanding its product portfolio with a 5G smartphone: equipped with the powerful 8-core Qualcomm® QCM6490 processor from Qualcomm Technologies, Inc., the Android 12 device offers users the ideal basis for smooth mission-critical push-to-talk and -video communication. A clear 6" FHD display, 48 MP main camera, 103 dB amplified speaker, 4400 mAh removable battery, WIFI 6, Bluetooth 5.2, NFC and 16-pin interface for secure peripheral connection complete the feature set. The RG540 supports the new CBRS frequency spectrum for private LTE networks. Especially in the field of public safety and crisis management, process/manufacturing industry and in the logistics sector, the smartphone with 5G technology enables the highest transmission speeds for the most demanding applications.

RugGear's German R&D team designed the RG540 with the most important components for the target customer group in mind: Usability, security, compatibility, and extreme performance. A rugged and modern mobile



device, the RG540 is designed to meet the most demanding requirements in the rescue, fire, police and military, public safety, industrial, maintenance and transport sectors. The RG540 complies with the 5G standard, which supports high-speed (near real-time) data transmission for networking and communication in industrial environments such as M2M, M2P and P2P, maintenance, remote monitoring and process optimization. The 5G smartphone can also be used in company-internal campus networks (stand-alone networks) and constitutes the basis for highly digitalized applications in automation such as remote maintenance, IIOT and augmented reality, i.e., everywhere where voice or video communication and data exchange with minimal latency is required.

[www.ruggear.com](http://www.ruggear.com)

### Boss Magnetic Hammer Cap

The Boss Cap is an American Made magnetic cap that fits all Boss hammers. The patent pending Boss Cap was designed to easily load roofing nails, button cap nails when installing house wrap, and any other shorter metal fasteners. Simply push the cap on the face of the hammer and remove when not in use! With its strong magnet molded into the face of the cap, loading stub nails has never been faster.

[www.bosshammerco.com](http://www.bosshammerco.com)



*The only publication dedicated to the effects of weather and climate on roofing systems.*

*Roofing Elements Magazine* deals with the physical environment and how "Elements" like heat, moisture, wind, and sun affect roofing systems. The Elements need to be considered in every aspect from material choice and design to installation techniques. *Roofing Elements Magazine* provides both industry white papers and institutional knowledge from the experts who learned their trade in the real world.



## 2 WAYS TO SUBSCRIBE!



- Scan Code
- [www.roofingelementsmagazine.com](http://www.roofingelementsmagazine.com) & click on FREE SUBSCRIPTION bar

**EDITORIAL:** Karen Knapstein, [karen@shieldwallmedia.com](mailto:karen@shieldwallmedia.com) • 715-513-6767  
**ADVERTISING:** Missy Beyer, [missy@shieldwallmedia.com](mailto:missy@shieldwallmedia.com) • 920-216-3007

# GET MORE INFORMATION ABOUT PRODUCTS & SERVICES SEEN IN THIS ISSUE. HERE'S HOW:



***If you are looking for more information from companies featured in this issue, fill out this form.***

*Mail the completed form to us, and we will have those companies get in touch with you. There's no need to fill out multiple forms; we'll do the legwork for you.*

Name (please print) \_\_\_\_\_

Signature (required) \_\_\_\_\_

Company \_\_\_\_\_

Address \_\_\_\_\_

City \_\_\_\_\_ State \_\_\_\_\_ Zip \_\_\_\_\_

Telephone (\_\_\_\_\_) \_\_\_\_\_

E-mail \_\_\_\_\_ Date \_\_\_\_\_

**Please check one or more boxes to subscribe FREE/Renew for 3 years:**

- ☐ *Garage, Shed & Carport Builder Magazine*   ☐ *Frame Building News*   ☐ *Metal Roofing Magazine*  
☐ *Rural Builder*   ☐ *Rollforming Magazine*   ☐ *Roofing Elements Magazine*   ☐ *Metal Builder*

I would like to receive my subscription: ☐ By Mail   ☐ Digitally

☐ Check this box if you wish to receive our Construction Express newsletter and offers from our partners.

**Email address is required to receive newsletter.**

**CONTACT NAME & EMAIL (OR) NAME & PHONE NUMBER ARE REQUIRED.  
WITHOUT THIS INFORMATION WE WILL NOT PROCESS THE REQUEST.**

## **CHECK WHICH TITLE APPLIES TO YOU:**

- ☐ President  
☐ Owner  
☐ Partner  
☐ General Manager  
☐ Sales Manager/Rep  
☐ Engineer/Architect  
☐ Vice President  
☐ Foreman  
☐ Installer  
☐ Other \_\_\_\_\_

## **PLEASE CHECK THE PRIMARY CATEGORY THAT DESCRIBES YOUR BUSINESS:**

- ☐ Builder, Dealer, Remodeler or Installer  
☐ Roofing Contractor  
☐ Metal Roofing Contractor  
☐ Building Material Dealer/Distributor  
☐ General Contractor/Remodeler  
☐ Manufacturer/Rep of Manufacturer  
☐ Architect/Specifier  
☐ Construction Consultant/Engineer  
☐ Building Owner/Developer  
☐ Other (Please Specify) \_\_\_\_\_

## **ENGAGED IN THE FOLLOWING APPLICATIONS:**

- ☐ Gutters/Accessories  
☐ Institutional  
☐ Residential  
☐ Agricultural  
☐ Commercial  
☐ Industrial

**SELECT A MAXIMUM OF 5 COMPANIES TO REQUEST INFORMATION FROM:**

Company Name: \_\_\_\_\_ PAGE: \_\_\_\_\_

Company Name: \_\_\_\_\_ PAGE: \_\_\_\_\_

Company Name: \_\_\_\_\_ PAGE: \_\_\_\_\_

Company Name: \_\_\_\_\_ PAGE: \_\_\_\_\_

Company Name: \_\_\_\_\_ PAGE: \_\_\_\_\_

I understand that by providing the above information I hereby consent to receive communication regarding my subscription via US Mail, telephone, and e-mail sent by *Metal Roofing Magazine*.

**MR MAY 2023**

Send to: Barb Prill • P.O. BOX 255 • Iola, WI 54945; [barb@shieldwallmedia.com](mailto:barb@shieldwallmedia.com)



## NEW PRODUCTS



### Stanley® Control-Lock™ Tapes

Stanley®, a leading tapes manufacturer in the world and a Stanley Black & Decker brand, has announced the launch of Control-Lock™ tape measures designed for strength, reach and measuring control. Stanley Control-Lock™ tapes range from 12 ft. to 30 ft. and feature a rugged, yet lightweight compact design equipped with an integrated finger brake\*, providing users with maximum control and protection when extending and retracting the blade.

"As the leading tapes manufacturer, we know that professionals demand tapes they can trust. That is why we are consistently innovating Stanley tapes to enhance the user experience," said Peter Gabriele, Group Product Manager of Tapes at Stanley Black & Decker.

Stanley Control-Lock™ tapes include the following features:

- A lightweight, compact and ergonomic design for maximum comfort and usability
- An integrated finger brake that provides improved control of the blade when measuring and retracting\*
- Pro-grade performance 1" blade width and 12-ft. max reach\*\*
- Protective rubber over-molded casing
- BladeArmor® coating treated to the first 3" for durability and abrasion resistance.

The Control-Lock™ line-up comprises of 12 ft., 16 ft., 25 ft., 8M/26 ft. and 30 ft., tapes sold in recyclable packaging, marking an important step forward in minimizing single use plastic from this packaging style.

\* Finger brake is included on all Stanley Control-Lock™ tapes except for 12-ft. model.

\*\*Max reach based on maximum extension of an average end user.

[www.stanleytools.com](http://www.stanleytools.com)



### Malco Products Expands Line of C-RHEX Drivers

Malco Products, SBC, one of the nation's leading solution developers and manufacturers of a variety of high-quality tools for the building trades, today launched an extension of its line of award-winning Cleanable, Reversible Magnetic Hex Drivers: the Building Construction Series, which

features deeper sockets for installing fasteners with higher head heights such as concrete anchors, pole barn screws and other common fasteners for roofing, siding and gutter applications.

"Contractors asked, and we delivered: we're once again extending our best-selling C-RHEX product offering with a solution specifically designed for the building and construction trades," said Nancy Gunnerson, Malco's director of marketing. "C-RHEX has been a huge hit since its initial introduction, and we're looking forward to continuing our proven track record of designing and delivering the high-quality, niche products that end-users are requesting to make their jobs easier on the jobsite."

The C-RHEX Building Construction Series models are available in six lengths: 2" (MSHC2); 4" (MSHMLC2); 6" (MSHXC2); 8" (MSH2XC2); 10" (MSH3XC2); 12" (MSH4XC2).

Reversible 1/4" & 5/16" hex sockets allow for quick changes between sizes, and the Building Construction Series drivers are designed to work effectively with painted fasteners, as specialized polish in the internal sockets prevents fastener sticking.

End-users can save valuable time and effort by having access to two reversible hex sizes in one driver with color-coded grooves for easy identification. These drivers are built with S2 hardened steel for long life and superior durability, and the protected heavy-duty magnet is easy to clean and doesn't contact the screw, so the fasteners spin true. The magnet will retain its strength for years to come.

These new models join Malco's existing C-RHEX portfolio, which includes 6 mm and 8 mm; 7 mm and 8 mm; 8 mm and 10 mm; 5/16" and 3/8"; 1/4" and 5/16"; and award-winning SAWTOOTH C-RHEX drivers.

[www.malcoproducts.com](http://www.malcoproducts.com)



### Petersen High-Temp Underlayment

Petersen, maker of PAC-CLAD architectural metal cladding systems, now offers PAC-CLAD HT high-temperature, self-adhering roof underlayment, which is designed to provide premium waterproofing protection for a variety of roofing applications. PAC-CLAD HT underlayment offers protection against water and ice damming while withstanding extreme weather conditions.

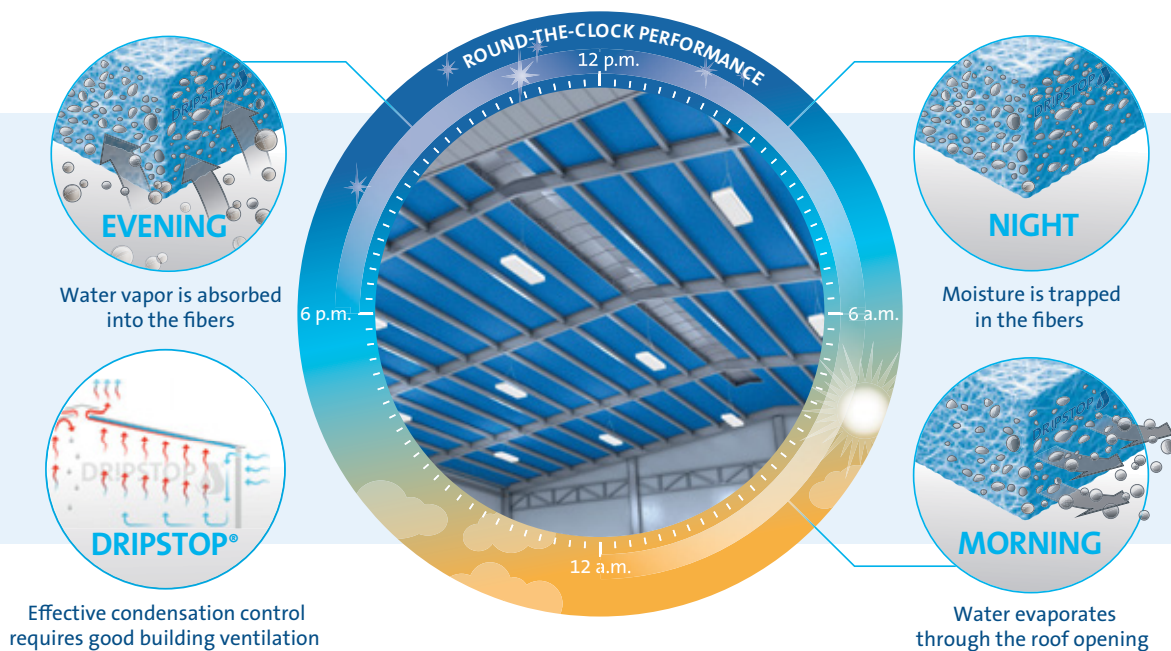
The self-adhering qualities of PAC-CLAD HT reduces labor costs and installation times while providing increased protection compared to that of typical felt roofing underlayments. This strong, 40-mil, skid-resistant, high-tensile-strength rubberized asphalt membrane is designed to withstand temperatures up to 250°F and is available in either black or white. It will not crack, dry out or become brittle, even under the most extreme weather conditions, resulting in permanent protection and low lifecycle costs. The rubberized asphalt is laminated to an impermeable polyethylene film layer.

PAC-CLAD HT is available from all Petersen locations as well as distributors that carry PAC-CLAD products.

[pac-clad.com](http://pac-clad.com) **MR**

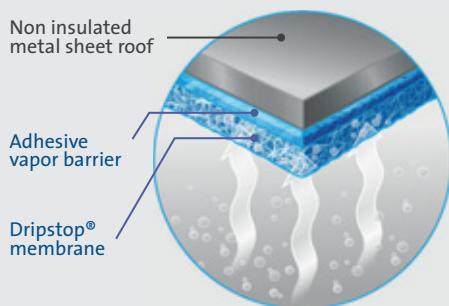


# CONDENSATION CONTROL WHICH INCREASES PROFITS NOT LABOR COSTS



## A Necessity for Any **Metal Roofed Building** That is Not Climate Controlled.

- Post Frame/agricultural buildings
- Steel buildings
- Self-storage
- Workshops/unattached garages
- Open-walled structures
- Carports, truck ports & RV storage



## Better Science Equals Drier Buildings

When condensation occurs, moisture gets stored in the specially designed pockets of the Dripstop® membrane.

- Helps fight corrosion in livestock confinement
- Arrives on-site already on roof panels
- Cuts construction time in half
- Saves money



## Fight Condensation Without Insulation

Ask for it from your preferred steel panel supplier

Write to us [info@dripstop.com](mailto:info@dripstop.com) or call us at: 1-(937) 660-6646

Get more information