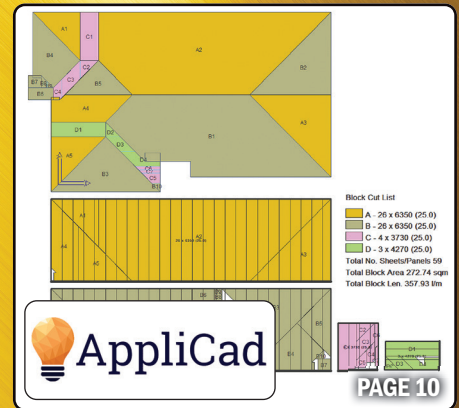


18TH ANNUAL METAL OF HONOR AWARDS



THE NEWEST TEAM MEMBERS IN E-Z GUTTER GUARD PROTECTION.

PREMIUM STAINLESS STEEL GUTTER GUARDS THAT ARE TOUGH AND EASY TO INSTALL.



E-Z-LEAF ELIMINATOR

STAINLESS STEEL TOUGH PREMIUM GUTTER FILTER

Water from the roof easily flows through our uniquely designed water separator and debris lifter.

EASY TO INSTALL! SLIDES RIGHT UNDER THE SHINGLES.

- STAINLESS STEEL FILTER
- CORROSION RESISTANT
- ALUMINUM EDGES
- BEAD LOCKS
- WATER SEPARATOR
- INCLUDES STAINLESS STEEL SCREWS
- FLEXES TO MATCH THE ROOF PITCH

E-Z-LEAF DESTROYER

STAINLESS STEEL TOUGH PREMIUM GUTTER FILTER

Our E-Z-Leaf Destroyer is the only stainless steel filter, on the market, that "snaps" into standard gutters with spring tension.

EASY TO INSTALL! SNAPS RIGHT INTO THE GUTTER.

- STAINLESS STEEL FILTER
- FILTER-FINE MESH
- SNAP-IN INSTALL - THE ONLY ONE ON THE MARKET
- ALUMINUM EDGE
- INVERTED ARCH
- BEAD LOCKS
- PROFILE SLOPES TO SHED DEBRIS

**SEE OUR COMPLETE LINE-UP OF GUTTER GUARD PROTECTION
ONLINE AT E-ZGUTTER.COM**

It's Time To Act

Dear Readers and Advertisers,

In light of the current political events, here and abroad, I am asking for your help.

I am unwilling to see friends and family at risk and remain silent and passive. We need to do what we can to prepare and force our government to prepare for conflict.

We are potentially on the verge of war with another superpower. War would obviously be catastrophic for most of the domestic residential, commercial and agricultural construction industry.

War would obviously be catastrophic. If the conflict remains confined the uncertainty combined with increasing energy prices and general inflation creates a near-perfect storm that would be disastrous for our industry.

There are several things our government needs to do immediately. One of the foremost is to reinstate exploration and drilling on federal land. Petroleum products are critical for a war effort and take time to process to a usable form. It would also undermine our opponents' cash flow and ability to continue its aggressions.

We also need to stop allocating funding to frivolous programs. Our spending-to-GDP ratio is comparable to that during World War II. With this level of debt, we cannot afford to fight a war. We can resume these programs after the conflict. In the concept of guns and butter, it is unfortunately time for guns.

I am not advocating war. Weakness and appeasement have never prevented violence. Consider this quote: "A man unskilled in violence can no more claim to be a pacifist than a eunuch can claim celibacy." We need to be prepared and current policy does not have that result.

During the pandemic we provided a resource to contact your representatives and send pre-written letters. We are in the process of relaunching a similar initiative.

Please do everything in your power to persuade the administration to take the steps necessary to prepare, including opening energy production and reallocation of unspent money from the stimulus programs to our military.

The only thing worse than war is fighting a war you are not prepared to fight.

Speaking out now is not only what is best for our industry, it is the morally right thing to do. Please contact your representatives and become active in any way you can.

Thank you for your support and may God bless those placed in harm's way.

— Gary Reichert, Publisher/CEO

Please contact your representatives by visiting
<https://rollformingmagazine.com/contact-your-representative/>



PREMIUM QUALITY COIL HANDLING & ROLLFORMING MACHINERY



PANEL ROLLFORMING LINES



TRIM ROLLFORMER



PURLIN LINES



PURLIN STACKER



DECKING LINES



CHANNEL LINES



GARAGE & ROLL-UP DOOR LINES



HEAVY GAUGE LINES



GRAIN BIN LINES



CUSTOM DESIGN

ASC MACHINE TOOLS, INC., SPOKANE, WA USA
(509) 534-6600     WWW.ASCMT.COM



CONTENTS

FEATURES

- 6: Ambassador Update**
Three Companies Merge
- 9: Metal of Honor**
36 Companies Receive Award in 2022
- 48: Metal Roofing Flashback**
Asbestos Shingles Replaced with Metal
- 51: Product Feature: Soffit**
Installation Tips & Tricks
- 52: Warranty Protection**
Who Is Responsible When Things Go Awry
- 56: Cool Roofing Technology**
Coatings Prevent Heat Gain
- 61: International Roofing Expo**
Recap: A Glimpse of IRE New Orleans



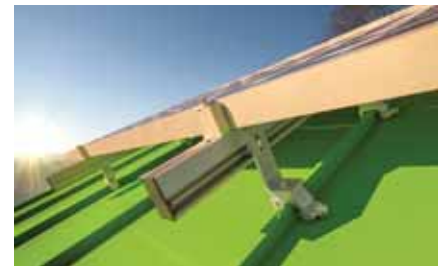
61



9



64



CORRECTION: In the February/March edition of Metal Roofing, AceClamp's Top 10 Product was erroneously labeled as "Snow Retention." It should have been labeled as "Solar Attachment." Metal Roofing Magazine regrets the error.



METAL ROOFING MAGAZINE

Managing Editor

Karen Knapstein
karen@shieldwallmedia.com
715-513-6767

Editors

Linda Schmid, Anthony Brass

Circulation/Subscriptions

Barb Prill
barb@shieldwallmedia.com
920.471.4846

Digital Product and Data Engineer

For help with online Classified Ads & the Business Directory contact:
Steve Duberstein:
steve@shieldwallmedia.com

Publisher

Gary Reichert
gary@shieldwallmedia.com
715.252.6360

Director of Sales

Missy Beyer
missy@shieldwallmedia.com
920-216-3007

Executive/Advertising Assistant

Kathy Budsberg
kathy@shieldwallmedia.com

Sales Assistant

Kathy Welk
kathyw@shieldwallmedia.com

Editorial Assistant

Nikki June

Graphic Designers

Tom Nelsen, Kevin Ulrich

Metal Roofing Magazine (ISSN: 1533-8711) (Volume 21, Issue 2) is published seven times per year (March, April, May, July, September, November and December) by Shield Wall Media LLC, 150 Depot St, Iola, WI 54945. Periodical postage paid at Iola, WI, and at additional mailing offices. Canadian Agreement Number: 40665675. POSTMASTER: Send address changes to Metal Roofing Magazine, Barb Prill, PO BOX 255, Iola, WI 54945. Copyright 2022 Shield Wall Media LLC. Metal Roofing Magazine and its logo are registered trademarks. Other names and logos referred to or displayed in editorial or advertising content may be trademarked or copyright. Metal Roofing Magazine assumes no responsibility for unsolicited materials sent to it. Publisher and advertisers are not liable for typographical errors that may appear in prices or descriptions in advertisements. Mailed free to roofing contractors and their suppliers throughout North America. Others may subscribe: \$29.98 for 1 year, \$56.98 for 2 years, and \$80.98 for 3 years.



MAY PREVIEW

■ Metal Roofing Magazine
IDEA Book: Outstanding
metal roofs

DEPARTMENTS

- 3 Publisher's Note
- 53 Business Connections
- 51 Product Feature: Soffit
- 64 Project of the Month
- 66 Products & Services
- 67 Advertiser Index



ON THE COVER:

Take a closer look at the Metal of Honor winning companies in this edition.

COVER DESIGNED BY KEVIN ULRICH

ONLINE SERVICES:

- Metal Roofing Buyers' Guide
- Subscribe FREE to Metal Roofing Magazine
- Archived Stories
- Subscribe to Roofers' Express e-newsletter



CHECK OUT OUR WEBSITE @
www.readmetalroofing.com

E-MAIL THE EDITOR AT
karen@shieldwallmedia.com



Hixwood, Stanley, Wisconsin. PHOTO COURTESY OF HIXWOOD

Hixwood Merges with Qualiform, Country Metals

By Linda Schmid



Hixwood Metal, Country Metals, and Qualiform Metals, market leaders in metal fabrication and post-frame building kits, are merging. All three companies have made quality in products and service their focus, and now they will work together under the Hixwood name.

The company was begun by Harvey Zimmerman who built post-frame buildings in Pennsylvania. By 1998, he had moved to Wisconsin, and his post-frame business, located on Hixwood Road, was booming. By 2020, Hixwood operated a panel and roll-forming business, and had its own brand of post-frame packages, a shed-building business, and coil sales with distribution throughout the US.

The company has seen a lot of growth in the last few decades, particularly in the last year. Hixwood increased sales by 53% in 2021. This was partly possible because of rising prices, but mainly because Hixwood's owners, Paul and Harvey Zimmerman, saw opportunities in product expansions and new business. With the merger, Hixwood is planning additional growth in the future. As Hixwood's General Manager Paul Zimmerman said, "Hixwood is ready to expand, but we've lacked the capital and resources in recent years to do so as aggressively as we'd like."



They were enabled to pursue these opportunities by Ambassador Supply, their parent company. Ambassador Supply, an investment, management, and holding company, acquired Hixwood in 2020.

Ambassador Supply deals in both agricultural and urban/suburban buildings. In 2021 they earned revenue of \$250 million, split between the markets; in 2022 they expect to reach \$350 million. By 2024 they project \$500 million in revenue.

Ambassador Supply is an affiliate of Ambassador Enterprises, a philanthropic equity firm that focuses on "legacy businesses." Brad Crawford, president and CEO of Ambassador Supply, stated that a legacy company is a small company that has built up their business and equity in their business name. They are known as being down-to-earth and an important part of the community.

As a philanthropic equity firm, Ambassador Enterprises operates two divisions, one for profit and one for non-profit. A portion of the earnings supports missionary work, including education in Liberia and other mission work throughout Africa. They also created a

non-profit mall in Fort Wayne, Indiana where shops can operate without huge rent payments.

The mindset that Ambassador works with is three-fold:

1. Financial. Like every business, they need to be profitable.

2. Cultural. This means the way you treat your employees and your customers is important. If an employee is worked so hard that they have no time to give back to the community, for example as a coach, getting involved with 4H, or whatever way the person cares to participate, then

SUPPLY CHAIN EFFECTING YOUR BUSINESS? WAITING FOR SILICONE?

**WANT A BETTER PRODUCT
THAT COST LESS & HAS SIGNIFICANTLY MORE
BENEFITS & A 30 YR HISTORY OF SUCCESS?**

The **ONLY Butyl Liquid Rubber** In The World
& Its Ready To Ship



Key Benefits

- Our proprietary solvent allows our Liquid Rubber to chemically cross-link to the substrate.
- Rust inhibitor-adhesion promotor-uv inhibitors-mildewcides
- Does not attract dirt unlike silicones; great for pitched and flat roofs
- Withstand temps from -40-250F
- Forms a 100% seamless membrane
- One-Coat Application
- Never a primer needed
- ASTM Tested
- Cool Roof Rated Council



EPDM
coatings
WWW.EPDMCOATINGS.COM
PH: 610.298.1989



SCAN ME

SUPPLIER NEWS

the company is not treating them right. And of course, they want to always deal fairly with customers, too.

3. Faith-based. This does not mean that the people Ambassador works with have to be believers; it does mean that Ambassador employees treat everyone in a way that is compatible with their faith.

Further, the company culture that Ambassador exemplifies is through the lens that everybody in every position matters. It doesn't matter what the CEO does if the truck driver doesn't do his job, and vice versa.

Ambassador Supply is always on the look-out for like-minded companies, and Hixwood is a perfect fit. "Harvey and Paul are salt-of-the-earth kind of guys," per Crawford, and Ambassador helps make their vision reality. Further, he states that Ambassador is generally not a "buy-and-flip" type of company; they usually hold the companies they have acquired.

The merger means that Hixwood is now serving a total of 17 states across the Midwest and the Eastern United States. Customers of Country Metals and Qualiform Metals should expect the same commitment to quality services that they have always experienced, according to Crawford.

"The marketing, website and logos on the trucks have



changed," he said. "Our relationships with customers have not. If anything, this will provide more resources to ensure we meet customer needs."

This is in keeping with Crawford's statement that on the rural side of the business, their aim is to help rebuild and revitalize rural America. He sees Ambassador as being part of a larger movement that has people working to rebuild the Town Square, businesses, and farms, not necessarily to modernize but to impact people in a positive way. That is what it's all about. **MR**



Raytec Manufacturing

RaytecLLC.com

METAL PARTS THAT FIT

CUSTOM METAL FABRICATING

- LASER CUTTING
- CNC PUNCHING
- NOTCHING
- SHEARING
- FORMING

QUALITY METAL PRODUCTS

- SEAMLESS GUTTER ACCESSORIES
- ROOFING PRODUCTS
- STORAGE SHED TRIM

Hangfast®
Gutter Hanger



Hangtite™
Gutter Hanger with Clip



REAL®
Gutter Cover



FLASHING

- Step
- Apron
- Roll



Rezist™



SERVING THE
Seamless Gutter & Roofing Industry
FOR OVER 40 YEARS

RaytecLLC.com | Sales@RaytecLLC.com | 877-800-2500



WINNERS

Congratulations to all of the 2022 Metal of Honor winners!
The Metal of Honor awards were created to allow metal roofing installers an opportunity to honor those who help them most by providing quality products and excellent service.

- ABC Supply Co.
- AceClamp
- AppliCad Software
- Atlas Bolt & Screw
- Building Products Development/ Logan Stampings
- Direct Metals Inc.
- Drexel Metals Inc.
- Dr!pStop
- Dynamic Fastener
- East Coast Fasteners
- Geocel Product Group (Sherwin-Williams Co.)
- Graber Post
- Hershey's the Metal Meister
- Hixwood
- Kirsch Building Products
- Levi's Building Components
- Malco Products
- McElroy Metal
- Metal Rollforming Systems
- MFM Building Products
- MWI Components
- Titanium / Owens Corning
- Petersen/PAC-CLAD
- ProVia
- Rapid Materials
- Reed's Metals
- Roof Hugger
- S-5!
- Sheffield Metals
- Sherwin-Williams Coil Coatings
- Snap-Z
- ST Fastening Systems
- Swenson Shear
- The Garland Company
- Triangle Fastener Corp.
- Union Corrugating Company

These companies have been selected by the readers of *Metal Roofing Magazine* as a top supplier in the industry. You, the readers, nominated who you believe has the most:

- Quality products • Excellent service • Dependable delivery • Competitive prices
-

Many companies were nominated by our readers and the top percent of vote recipients—36 in total—make up the 18th class of honorees.

Congratulations to all of the 2022 winners!

AppliCad Software

METAL OF HONOR AWARDS: 1 ■ WEBSITE: www.appliacad.com ■ EMAIL: enquiries@appliacad.com

Reflections On 30 Years of Hard Work

When we first started this adventure over 30 years ago, we knew very little about metal roofing. Indeed, we knew very little about roofing period! What we were very good at was modelling stuff in a CAD program in 3D — recreating the real world as it might appear so that we can test ideas, measure stuff, visualise the finished result, etc.

At that time in our ‘home’ market of Australia, metal roofing was a very small part of the residential market-place, I am going to say about 17-20%. The vast majority of residential roofing was clay and concrete tile. Now to the present day — about 72% of residential roofing is metal with slight variations in different regions. Over 90% of all commercial/industrial roofing is metal with vast areas of metal cladding to go with that.

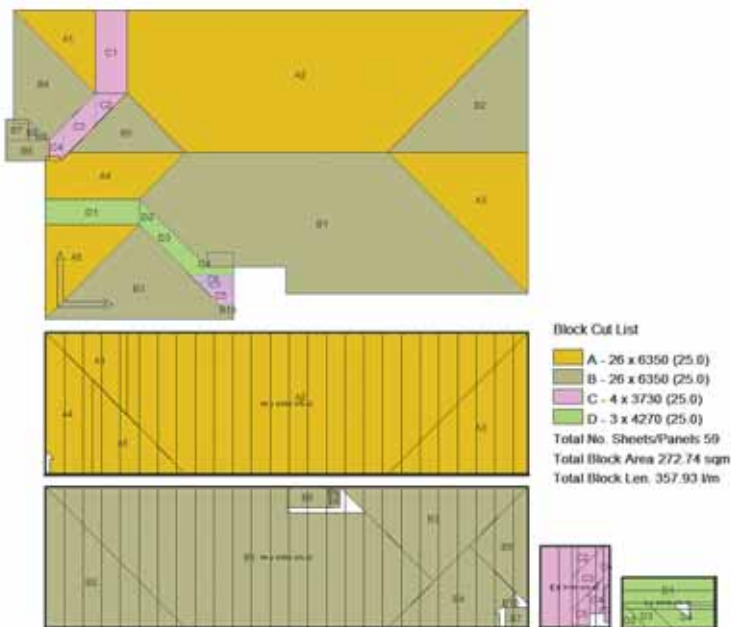
I believe that this incredible expansion of the use of metal was because of the advantages that metal roofing brings in the first instance, but also facilitated by the tools AppliCad created to make estimating and quoting accurate and reliable for even the smallest contractor.

Metal roofing can be more complicated to install and make tight, especially compared to tiles and shingles. You cannot stretch it if it's too short and you spend a lot of time cutting if it is too long and the offcuts are just waste (profit eaters).

AppliCad was the first company in the world to develop roof estimating tools in a 3D CAD environment to replicate the geometry of a roof and then to simulate the application of the roofing materials onto said model so that accurate quantities can be extracted. In the early days, all we could do was report the total area and present costs per square (square metres or square feet) and then a basic material list with an estimate for labour.

This worked very well for years, but roofers are constantly looking for a commercial edge, so we had to find ways to make the take-off a closer representation of what actually happens on the roof. This led to the development of various methods of accounting for the re-use of offcut material, replicating what many installers were already doing in practice — that is flipping sheets at a hip end, one cut, two panels and virtually zero waste. Producing a ‘map’ or panel layout with matching cutting list so that the guys on site did what the estimating department envisioned — everyone working off the same ‘song-sheet.’

But now we needed to improve production, so we extracted the cutting list in a form that can be sent directly to the controller on the roll forming machine. This reduced errors, improved productivity and gave the machine information so it could even whack a label onto each sheet identifying where on the roof each



sheet is to be installed. This further improves accuracy and efficiency both in the factory and on site and has been in use all day, every day for over 20 years.

We didn't stop there and over time, we have developed the most comprehensive tool kit for metal roofing estimators/quantity surveyors in the world allowing them to extract the most accurate information for each and every job in the timeliest way. With sufficient work in the in-tray, most experienced operators using our Roof Wizard software can knock out between 10 and 15 residential estimates a day with detailed labour and material costings and production/fabrication documentation! More complex jobs may take a little longer.

None of this is an accident — it is the result of 30 years of collaboration with our customers all over the world. There is no one way to ‘skin the cat’ and every time we learned something new, or a new function to solve a specific problem was added, it became a new tool for every other user of our software. We have solved problems that a lot of manufacturers/roofers don't even know they have yet!

I am very proud of the work my team has done over such a long period and very proud of the industry recognition we have received from *Metal Roofing Magazine* readers. Thank you to everyone who voted for us. **MOH**

Ray Smith
 Founder/Managing Director
 AppliCad Software

Roof Wizard's Utility

"Thank you for 30 years of trust and collaboration, to get us to where we are."



AppliCad



Home of Roof Wizard,
the World's No1 in roofing
and siding software



Time

Drexel Metals

METAL OF HONOR AWARDS: 16 ■ WEBSITE: www.drexelmetals.com ■ PHONE: 888.321.9630

Drexel Metals Lends a Hand and an ARM

Regional roll formers and metal roofing installers are good at what they do: manufacturing and installing long-lasting metal roofing. But even the best of the best need back-office support to keep projects running smoothly. That's why Drexel Metals created the Drexel Metals-Association of Regional Manufacturers (DM-ARM) program. Since 2011, Drexel Metals has assisted manufacturers and installers with critical details that make a metal roof roll forming business or installing operation successful. Far more than supplying premium products, the DM-ARM program provides local controls, efficiency and freight savings to installers and manufacturers.

Putting the program into practice, one such installer, RLS Metal Systems (RLS), saw the opportunity to alleviate ongoing sales disruptions with another supplier and expand into metal roof manufacturing. RLS partnered with Drexel Metals a decade ago and has since seen the following benefits: seamless transition into manufacturing, quality backed by industry-leading warranties and steady growth bolstered by high customer retention.



Seamless Transition Into Manufacturing

Joining the DM-ARM program, RLS delved into manufacturing with lower overhead and startup costs than they would have had independently. In addition to supplying metals, Drexel Metals conducts warranty specification, system backing and systems testing to sideline substantial costs that RLS members would otherwise incur. With these aspects of the business taken care of, the transition into manufacturing was uncomplicated for the RLS team.

Now able to fabricate coil into metal roofing systems, RLS has increased their business capacities, boasting hundreds of thousands of square feet of aluminum and steel roofing sold and installed. They have also continued to provide their customers with ongoing support and service from Drexel Metals.



Quality Assurance Backed By Industry-leading Warranties

RLS further gained access to a more stable supply of premium materials and time-tested roofing systems —enjoying on-time delivery even for urgent needs. These systems are also backed by Drexel Metals' full array of warranties, including the 35-Year Gold Standard Warranty that covers the entire metal roofing system deck and is transferable from owner to owner during the course of the warranty.

In addition to strong warranties that cover labor, adhesion, chalking and fading, RLS can now depend on the Drexel Metals inspection team to ensure quality installation. This allows RLS to back their work with Weather Tightness Warranties to provide peace of mind from the seams to eaves. Starting with high caliber materials installed with superior tools and backed by leading warranties, RLS can make their contractors' lives easier and deliver excellent results to their customers.

Customer Retention and Steady Growth

A testament to Drexel Metals' ability to keep the supply chain moving even in difficult times, RLS has experienced a high customer retention rate since joining DM-ARM. Similarly, the team saw a steady growth of 50 – 60 percent annually (pre-pandemic) and has achieved a 30-40 percent growth rate during the ongoing pandemic.

While RLS has always been a first-rate roofing installer, their partnership with Drexel Metals has increased their business capacities, making it possible for them to quickly fabricate quality metal roofing systems.

Get a Hand By Becoming a DM-ARM

RLS is just one of the more than 60 Authorized Fabricators throughout the U.S. benefitting from the DM-ARM program. Although headquartered in Louisville, Kentucky, Drexel Metals has expanded across the country, allowing more opportunities to join the DM-ARM program.

For more information, call 888.321.9630 or visit www.drexel-metals.com. **MOH**



THANK YOU!

FOR HELPING DREXEL METALS WIN THE
METAL OF HONOR AWARD 16 YEARS IN A ROW!

Year after year, we stand by our commitment to support the growth of installers, manufacturers and fabricators. With metal roofing on-demand, we offer better local control, greater profits, larger freight savings and less scrap.

As a back-office partner, we allow our certified installers more time in the local market, which gives them an advantage over the competition. As a recognized industry leader, we will continue to set the bar in the roofing industry by equipping our valued partners with the best products backed by the best service.



1234 Gardiner Lane | Louisville, KY 40213
drexelmetals.com | Toll Free: 888-321-9630 | Fax: 877-321-9638

DrexelMetals
Roofing Systems + Custom Fabrication
A CARLISLE COMPANY



Dr!pStop

METAL OF HONOR AWARDS: 2 ■ WEBSITE: www.dripstop.com ■ PHONE: 937.660.6646

As a builder or building owner, you may have received a call that began with: **“It’s raining inside my building!”**

It’s probably condensation. Once the building is up, the remedies are fewer, less effective, and more expensive. *The key is to install panels with a condensation control membrane like DR!PSTOP during construction.*

The reason you might not think about condensation until it is too late is... *You can’t see, touch, or feel it, until it’s already a problem.* Understanding what causes condensation and the solu-

tions can be confusing. However, builders who educate their customers about condensation before starting the job can avoid angry phone calls and problems after the build.

It is a simple scientific fact that just as a glass of ice water sweats on a hot day, bare metal roofing sweats under similar conditions.

When warm, wet air meets a cold surface, condensation forms water droplets.

In most parts of the country, dripping is almost unavoidable due to seasonal climate changes. There are two different ways builders have typically combatted moisture inside metal buildings. Historically, a layer of insulation has been used to minimize the change in temperature—this helps stop humidity from forming water droplets. More recently, builders have found a new, more efficient way to “control” condensation using a felt membrane to “catch” the moisture as it forms overnight, then “release it” as the sun and air move across the metal roofing panels during the day. DR!PSTOP is the world’s most trusted and used condensation control membrane.



When insulation is installed to specifications, it can be an effective solution. A condensation control membrane like DR!PSTOP offers numerous advantages for both the builders and building owners. As the building is erected, DR!PSTOP arrives already installed on the metal panels. Therefore, there is no time spent installing insulation. This increases job site safety for the builder by eliminating blind steps to purlins covered with insulation. It also saves labor typically spent tacking that insulation down and taping the seams. Since no insulation is being used, windy days become much less of a challenge.

Our membrane will not require cleaning or maintenance. Birds will not peck holes in it and it will not sag or fall off. DR!PSTOP is virtually worry-free.

Most condensation control membranes like DR!PSTOP offer noise reduction to cut down on both impact noise and echoes from inside the building.

DR!PSTOP’s specially designed adhesive barrier also helps protect the steel from corrosion. DR!PSTOP on a properly installed and vented metal roof will perform exceptionally 20-plus years down the road!

Ventilation

There are many potential sources of moisture in a metal building:

- Fill dirt/gravel
- Concrete
- Livestock
- Poor drainage
- High ground water table
- Use of heaters, propane, kerosene, etc.
- Snow melt from vehicles, or moisture from washing vehicles
- Washing down floor areas
- Storage of firewood, green lumber, or fresh-cut timber
- Hay storage or other farm commodities

Whatever condensation control option you choose, ensure proper ventilation.

We want to thank our partners and customers for their continued trust and service. DR!PSTOP has served our customers for over 25 years and we look forward to serving for another 25.

MOH

DR!PSTOP
Condensation control



Increase Profits Not Labor Costs

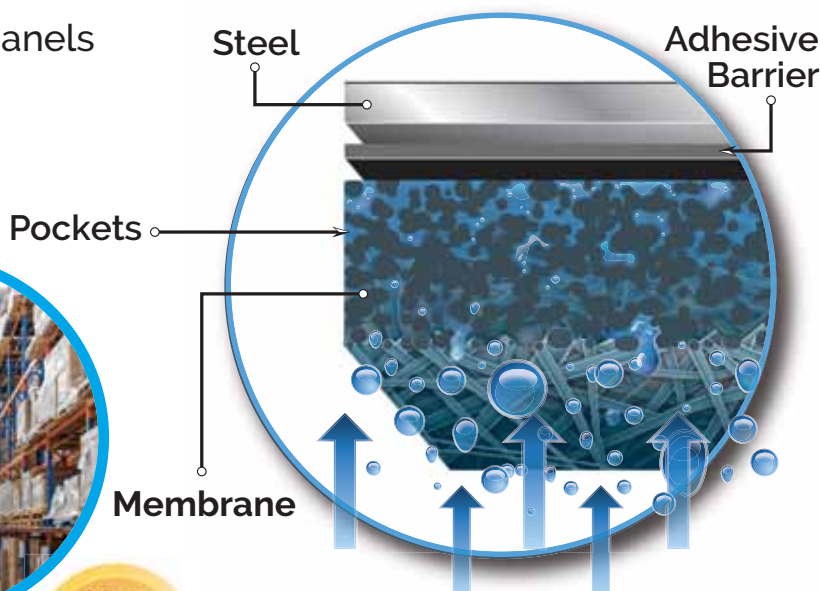
A Necessity for Any Metal Roofed Building That is Not Climate Controlled.

- Post Frame/agricultural buildings
- Steel buildings
- Self-storage
- Workshops/unattached garages
- Open-walled structures
- Carports, truck ports & RV storage

Better Science Equals Drier Buildings

When condensation occurs, moisture gets stored in the specially designed pockets of the DripStop membrane.

- Helps fight corrosion in livestock confinement
- Arrives on-site already on roof panels
- Cuts construction time in half
- Saves money



DR!PSTOP
Condensation control



Fight Condensation Without Insulation

Ask for it from your preferred steel panel supplier

www.dripstop.com or call us at: 1-(937) 660-6646

Dynamic Fastener

METAL OF HONOR AWARDS: 13 ■ WEBSITE: www.dynamicfastener.com ■ PHONE: 800.821.5448

What is the definition of long life? The answer would vary greatly depending upon the subject. For instance, the life expectancy of an African elephant on the Serengeti would be substantially different than that of a mosquito on your forearm.

Unfortunately for the metal roofer, the same nebulous and misleading signals are sent when some of Dynamic Fastener's competitors claim their fasteners have a long life coating. Once again, "long life" is just a relative phrase.

To eliminate unnecessary concerns on behalf of its valued customers, Dynamic Fastener quantifies the meaning of "long life." Since Dyna-Coat premium coating passes the 1,000-hour salt spray test, the company proudly proclaims "1,000 Hour" right next to the word Dyna-Coat. Rarely, if ever, does Dynamic Fastener see its competitors touting the tests that their screws pass. That is a suspicious omission.

To paraphrase the famous commercial, "What's on your fastener?" Removing the uncertainty on this very important topic is easy. Specify Dyna-Coat 1,000-hour salt spray premium coating on all screw requirements.

Dyna-Coat is a premium organic polymer coating designed to provide corrosion resistance for metal fasteners. Fasteners coated with Dyna-Coat exhibit excellent resistance to marring, chipping, and abrasion. The color of the coated fastener is metallic silver. Dyna-Coat employs several forms of corrosion resistance, such as replacement, inhibition, envelopment, and electrochemistry. These coated fasteners also have a strong resistance against acid and alkaline chemicals.

Service

Dynamic Fastener is proud to have been chosen to receive the 2022 Metal of Honor Award by the readers of *Metal Roofing Magazine*. That devotion from readers is not an accident.

The company's success rests on its dedication to service, evident in the following areas:

- Standard orders received by 4 p.m. CST will ship that day more than 99% of the time.
- Dynamic Fastener's buying power enables it to competitively and successfully sell nationwide. The company has more than 45,000 customers representing all 50 states and 15 foreign countries.

Catalog

Dynamic Fastener's free 140-page full-color Tool and Fastener Hand Guide (shown at right) covers

fastener applications, engineering data, availability of types, size ranges, and fastener materials.

The Hand Guide also features Dynamic Fastener's flagship products: D•F® screws, Dyna-Guard® snow retention system for metal roofs, Dyna-Clamps® to accommodate many different profiles of standing seam roofs, and 100 million D•F® rivets in stock, of which over 70 million are prepainted and stocked in bags of 250 pieces.

In addition to discussing screws and anchors, the Guide provides prices and other information relating to flashings, sealants, insulation tapes, safety equipment, hand tools, power tools, and more.

There are seven Dynamic Fastener locations: Kansas City, Missouri (main office); Chicago, Illinois; Houston, Texas; Las Vegas, Nevada; Memphis, Tennessee; St. Louis, Missouri; and St. Paul, Minnesota. **MOH**

DYNAMIC FASTENER 2021



2021 TOOL & FASTENER HAND GUIDE

Over 99% of standard orders received by 4:00 p.m. CST will ship that same day!

MAIN OFFICE	KANSAS CITY	CHICAGO	HOUSTON	LAS VEGAS	MEMPHIS	ST. LOUIS	ST. PAUL
9911 E. 53rd St. Raytown, MO 64133 816-358-9898 Local 800-844-1199 Fax 800-821-5448 NEI	2575 W. LeMoine St. Melrose Park, IL 60160 708-615-1450 Local 708-615-1451 Fax 800-573-7787 NEI	1414 Brittoncore Rd. Houston, TX 77043 713-647-8665 Local 713-647-8635 Fax 800-988-5490 NEI	6455 Dean Martin Dr. "J" Las Vegas, NV 89118 702-566-1555 Local 702-566-0175 Fax 866-936-8665 NEI	3700 Cherry Rd. Memphis, TN 38118 901-369-8000 Local 901-369-0105 Fax 800-727-0288 NEI	12800 Penridge Dr. Bridgeton, MO 63044 314-739-8771 Local 314-739-8691 Fax 800-444-0515 NEI	2316 Territorial Rd. St. Paul, MN 55114 651-644-1212 Local 651-644-1124 Fax 800-755-2426 NEI	



PRICES GUARANTEED UNTIL MARCH 31, 2022 OR WHILE SUPPLY LASTS - SUBJECT TO CHANGE WITHOUT NOTICE

(800) 821-5448

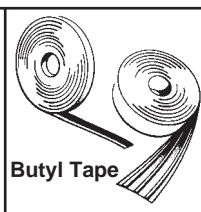
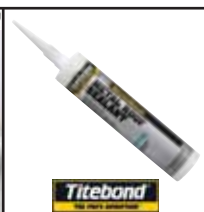
Order online @ www.dynamicfastener.com

© Copyright 2021 D.F.S.

DYNAMIC FASTENER



Everything for the Metal Builder & Roofer®



FREE 140 Page Full Color Tool & Fastener Hand Guide provides prices, engineering data & details product offering.

DYNAMIC FASTENER is specifically geared to handle the needs of the Rural Building Contractor. We provide in-house custom color painting of screws and rivets with just a one or two day (days, *not* weeks) lead time. Over 100 million rivets, mostly pre-painted, & tens of thousands of power tools are stocked and sold at the lowest prices. Highest quality, top name brand fasteners are stocked and sold at the lowest prices. Same day shipment on orders received by 4:00 p.m. CST. We are a supplier to the largest metal building manufacturers.

We want to be **YOUR** source for screws, pre-painted rivets, anchors, flashings, Dyna-Guard® snow retention system, safety equipment, hand tools, power tools and accessories.

7 warehouses to serve your construction needs for tools and fasteners

(MAIN OFFICE)

Kansas City • Chicago • Houston • Las Vegas • Memphis • St. Louis • St. Paul

CALL 800-821-5448 or Order Online @ DYNAMICFASTENER.COM

Call for your Free Full Color 140 Pg. Hand Guide. Better yet, call us for your next tool or fastener requirement. Discover for yourself why your peers enjoy doing business with our company!

Kirsch Building Products

METAL OF HONOR AWARDS: 1 ■ WEBSITE: www.sharkskinroof.com ■ PHONE: 877.742.7507



When Denver University (“DU”) set out to roof the new Dimond Family Residential Village, a building with 250 dorm rooms, a dining area and numerous common areas, they knew they would use metal roofing panels comprised of copper. DU has utilized copper on many of the roofs and external siding applications throughout campus due to its unique aesthetic appeal, exceptional functionality and renowned longevity.

Installing contractor, Superior Roofing, teamed with local manufacturer, Schafer and Co., to install over 30,000 square

jobsite.

Given the extraordinarily long lifespan of copper roofing material and its high level of thermal conductivity, selecting the right underlayment for the project was paramount. The parties involved came to the conclusion that the best possible roof underlayment was Sharkskin Ultra SA®.

Sharkskin Ultra SA® was the underlayment of choice for a number of the features and benefits it provided the project. Because of its superior adhesion, at low temperature, the under-

layment could be installed in Denver during the cold fall and winter months. Its 12-month UV protection meant the interior of the building was protected without interior work delays, even before the copper roof panels had been installed and the roof completed. Sharkskin Ultra SA’s slip-resistant walking surface provided sound footing for roof-

ers and other trades working on the roof. Along with its high temperature resistance under copper panels in a mile-high environment, its high tensile strength and anti-oxidant coating formulation will provide a long term moisture barrier for the roof system.

Sharkskin Ultra SA is also a Green product, its synthetic butyl adhesive contains no VOCs and the engineered woven substrate is produced from polypropylene. In addition, the product is manufactured in the USA. **MOH**



PHOTOS COURTESY OF SCHAFER AND CO.

Why **SHARKSKIN**?

We Outperform the Competition!



Photo courtesy of Tremco,
Contractor Eberhart Roofing
and Waterproofing, Jobsite
Newbury Park, CA



877.742.7507



www.sharkskinroof.com



MFM Building Products

METAL OF HONOR AWARDS: 8 ■ WEBSITE: www.mfmbp.com ■ PHONE: 800.882.7663

Efficient Waterproofing Protection

MFM provides a full lineup of self-adhered underlayments and low-slope roofing membranes to get the project done fast, efficient, and save you money. Count on our 60 years of waterproofing experience to give you peace of mind when the job is complete.

Look to MFM for:

- Granulated ice & water underlayments
- High-temperature underlayments
- Tile and metal underlayments
- Shingle starter membranes
- Low-slope roofing membranes
- Specialty roofing and construction tapes
- And so much more!

All of MFM's products are manufactured in the United States and come with a rock-solid warranty to back it up. It's the way we've been doing business since 1961. Count on MFM to provide the right waterproofing solutions for your business.

Expanding for the Future

In 2021, MFM announced a major Expansion Project to increase our capacity to ensure material is available and ready for our customers. We also added a new R&D Center to introduce several new waterproofing products in 2022.

Visit Our Website

Check us out at www.mfmbp.com to learn more about our products or to request a FREE sample. **MOH**



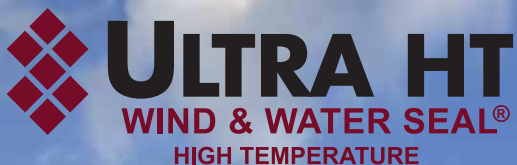
Ultra HT Wind & Water Seal® offers premium performance for both commercial and residential projects. Composed of a high strength, cross-laminated film surface, Ultra HT protects the job before, during and after installation of the final roofing system.



(LEFT) Peel & Seal® is the original, self-adhering low-slope roofing membrane designed that can be left exposed to the elements indefinitely.

(RIGHT) MFM Wind & Water Seal™ offers whole roof protection from ice dams and wind-driven rain. An economical choice for high temp applications.





The best roof protection under the sun.

Regardless of the project, big or small, commercial or residential, Ultra HT is the premium, high temperature, self-adhering underlayment engineered to take on any roof application.

- High temperature rated up to 250°F
- Non-slip, cross-laminated construction
- Self-seals around roofing fasteners
- Split release liner for easy valley installation

Give your project the best protection before, during and after installation of the final roofing system. Peace of mind you and your customer will appreciate.



Visit mfmbp.com for a free sample or call 800.882.7663 today.



Titanium®

METAL OF HONOR AWARDS: 10 ■ WEBSITE: www.titaniumundermetal.com ■ PHONE: 800.567.9727

Titanium Is Tough Under Metal

Titanium® Synthetic and Self-Adhered Underlayment is the premium choice for protection that lasts.

Titanium is the most preferred premium synthetic and self-adhered underlayments brands—and the ideal choice for metal roofing systems. Titanium® underlayments create a durable, tough barrier that provides roof deck protection from eave to peak.

Best Practice

- Like an asphalt roof, when installing a metal roof, we recommend starting with a clean roof deck. Tearing down to the deck is important to help identify any unseen issues.

- **Picture framing:** Best practice for installation would be to use our Titanium PSU30 along the eaves, rakes, and any penetrations, then use Titanium UDL30 or UDL50 on the remaining deck.

Or, based on local codes, a Self-Adhered (SA) underlayment could be required at the eaves. We recommend that a SA product be used on the eaves, rakes, valleys, and penetrations. These are areas where a large amount of water can gather, and this method helps create peace of mind. The use of a synthetic underlayment can be used in the field of the roof.

Titanium Products

Exceptional Durability and Tear Resistance: Even small holes can lead to leaks. We tested the effects of heavy boot scuffing that can occur during installation. Only Titanium UDL30 maintained its strength and didn't leak! This is important because the underlayment is the last line of defense on a roof deck.

UDL30 and UDL50 are tough and durable. From helping to dry the roof before the metal cladding arrives to resisting tears and scuffing from foot traffic and metal panels, they can hold



up to the use and abuse of a metal roof install.

Increased Walkability: The SureFoot® nodular walking surface creates a safe walking surface. Our Titanium PSU30 and UDL30/UDL50 all have the same pattern, which makes it easier to move around the roof deck without having to adjust to different surfaces.

Having the same SureFoot® nodular walking surface provides peace of mind for installers. They do not have to change how they walk as they transition between products, or fear that one product will perform differently under their feet. The nodular walking surface helps to provide great footing, both wet and dry.

High-Temp Performance: PSU30 is high temp rated and has a self-sealing lap



system. This improves the bond between layers, greatly decreasing the risk of leaks. Great products to use under asphalt, metal, and tile. **TitaniumUnderMetal.com**

Customer Loyalty Program: We Reward Loyalty. Visit CLPRewards.com to learn more about how contractors can earn cash back on purchases of Titanium. **MOH**

TITANIUM®



TOUGH UNDER METAL



HIGH-TEMP RATED

Designed to withstand temperatures up to **240°F**.



UV RESISTANCE

Can be exposed to the elements up to **180 DAYS**.



WALKABILITY

Increased walkability with **SUREFOOT® TECHNOLOGY**.

Titanium® Synthetic Underlayment.
The premium choice for protection that lasts.

Contractors trust Titanium® underlayment for roofing projects that demand performance. Sure-Foot® Technology creates a safer nodular walking surface that resists tearing and keeps working to help prevent moisture damage and cracking under tough conditions. Choose one of the most preferred premium synthetic underlayment brands — and the ideal choice for metal roofing systems.



Discover all the benefits of premium synthetic underlayment at TitaniumUnderMetal.com.

PAC-CLAD | Petersen

METAL OF HONOR AWARDS: 17 ■ WEBSITE: PAC-CLAD.com ■ PHONE: 800.PAC.CLAD



PHOTOS: HORTONPHOTOINC.COM

Colorful Façade Revitalizes Neighborhood

The Altgeld Gardens public housing complex on Chicago's far South Side has a long history of both hope and despair. Built to be a community within the larger city for returning black veterans after World War II, severe environmental hazards in the area led to decades of health problems for its residents. Today, the city is revitalizing the development, including the recently completed Altgeld Gardens Family Resource Center as a new gateway facility. A wavy façade, oversized windows and two interior courtyards clad in sky-blue metal wall panels bring a sense of welcome and fun to this 40,000-sq.-ft. community building that houses a Chicago Public Library branch, childcare center offering pre-K education and a community center with meeting rooms.



Designed with Sustainability at Its Core

The original plans for Altgeld Gardens, completed in 1944, were the antithesis of what the term "public housing" often brings to mind. Instead of high-rise towers, its suburban-style streets were lined with two-story row houses featuring quirky

gables. All those hard angles were complemented by the swirling profile of a retail center designed by the modernist Chicago firm of Keck & Keck. The eye-pleasing design was placed directly in the center of what came to be known as the nation's largest concentration of hazardous waste locations, and residents' health suffered severely. Their fight to force local and federal officials to address health issues in this low-income neighborhood is credited as a founding effort in the environmental justice movement.

With that history, it's notable that the new family resource center is designed with sustainability at its core. It's considered "net-zero ready," meaning that, if the Chicago Housing Authority chose to pair the building with a solar array, it would be energy neutral. Designers with the local firm Koo also wanted to ensure playfulness was a part of the plan. That's where both the swoopy exterior and the interior courtyards/light wells come in.



Playful Courtyards

To clad the courtyards, architects opted for metal wall panels installed vertically, to give the confined areas a feeling of added height. Installers with Streamwood, Ill.-based Progressive Dynamics opted for Snap-Clad panels in a custom Dynamic Blue finish. This team also handmade many of the panels in their shop from Petersen-made coil, so the long panels tapered according to the architects' specifications.

Petersen, a Carlisle company, manufactures a wide range of PAC-CLAD architectural metal roofing and cladding products in multiple gauges of steel and aluminum. All are available in full 70% PVDF finish (Kynar) in 46 standard colors that include a 30-year finish warranty. Most colors meet LEED and Cool Roof Rating Council certification requirements. **MOH**

Rustic Design

With a metal roof in a weathered steel finish



A metal roof in a Weathered Steel finish gives this wildlife refuge visitor center a classic farm-style look reminiscent of agricultural buildings seen at the time of President Roosevelt's visit to this area.

Theodore Roosevelt Visitor Center, Onward, MS Installing Contractor: Central Roofing
Architect: John S. Odom Photo: hortonphotoinc.com

PAC-150 (180° seam)
Metal Roof System

WEATHERED STEEL FINISH



CASE STUDY @ [PAC-CLAD.COM/ROOSEVELT](https://www.pac-clad.com/roosevelt)

IL: 800 PAC CLAD MD: 800 344 1400 TX: 800 441 8661 GA: 800 272 4482 MN: 877 571 2025 AZ: 833 750 1935

[PAC-CLAD.COM](https://www.pac-clad.com) | [INFO@PAC-CLAD.COM](mailto:info@pac-clad.com)

ProVia

METAL OF HONOR AWARDS: 1 ■ WEBSITE: www.provia.com ■ PHONE: 800.669.4711

ProVia is pleased and grateful to receive its first Metal of Honor award from the readers of *Metal Roofing Magazine*. Having entered the metal roofing market just a few years ago, ProVia appreciates this recognition from those in the trade.

ProVia's stamped panel metal roofing system is a smart choice for dealers, contractors, and installers. Homeowners love its durability and beauty, and building professionals appreciate its strength, ease of installation, and return on investment.

A few reasons the ProVia Metal Roofing System stands out:

- It's a premium metal roofing product, manufactured with 26-gauge G-90 galvanized steel – 10% more than the industry average – and the GalvaTec™ finish reflects UV rays, protects against fading and corrosion, and is resistant to extreme temperatures.

- The 4-Point Locking System ensures long-standing performance against the harshest weather. The system provides edge-to-edge secure panel placement and field anchoring for protection against wind uplift, heavy wind-driven rain, and snow.

- The system is third-party tested for tensile strength, fire, wind, rain, and corrosion protection. Plus, it's certified to withstand wind speeds up to 180 mph and is approved for High Velocity Hurricane Zones (HVHZ) within Florida, including Broward and Miami-Dade counties.

- It has a limited lifetime non-prorated warranty and an exclusive workmanship warranty through our Installer Training Program.

- The system was designed and developed with the installer in mind – the trim and accessory package is custom-engineered for ease of use, and the pre-formed starter panels are ready to install right out of the box, reducing jobsite labor.



- The embossed panels provide the authentic look of shake or slate and offer great curb appeal that homeowners love.

Consumers want metal roofing systems that aren't so industrial looking, like the vertical exposed fastener and standing seam systems on the market today. Homeowners prefer something more elegant and traditional looking; a beautiful roof that makes their home stand out. ProVia's handsome embossed and variegated panels, in natural earth-tone shades and the texture and look of shake and slate shingles, fit the bill and complement any style of home.

Why Partner with ProVia?

ProVia is a nationally known manufacturer of entry door systems, vinyl replacement windows, vinyl siding, manufactured stone, and metal roofing. ProVia stands for "The Professional Way," and that means we hold ourselves to a higher standard of integrity, accountability, and quality. We focus on manufacturing Professional-Class products for builders and remodeling contractors.

Customers count on ProVia for premium-quality products, manufactured



using progressive technologies combined with old-world craftsmanship. Professionals and homeowners trust in the durability, energy efficiency, security, and long-lasting beauty of our products.

ProVia customers also benefit from resources like our Installer Certification Programs, online design and visualizer tools, how-to video library, and prompt, industry-leading customer service and sales support.

Learn more about ProVia metal roofing by visiting www.provia.com/6reasons or email metalroofing@provia.com.

MOH

HEY ROOFING PRO!

INCREASE YOUR PROFITS WITH
PROVIA METAL ROOFING



ProVia Metal Roofing is **more profitable per square** than asphalt roofing. It's the next generation of metal roofing—a premium stamped panel roof system that elevates your product offering, provides long-term ROI, and boosts your bottom line as well.



DOORS | WINDOWS
SIDING | STONE | ROOFING

**SCAN TO
LEARN MORE**



2022 METAL OF HONOR WINNER

AceClamp® by PMC Industries, Inc.

METAL OF HONOR AWARDS: 8 ■ WEBSITE: www.aceclamp.com ■ PHONE: 860.479.0876

AceClamp® is a market-leading manufacturer of rooftop snow retention and solar mounting systems. Our lab-tested mounting systems save contractors time and money by offering fully assembled clamps/components that simplify installation and reduce labor costs.

Our patented non-penetrating, sliding-pin clamps secure without the need for set screws. A single fastener evenly distributes forces across two push-pins.

While our products are designed primarily for SSMR, we offer asphalt, membrane, and slate solutions. One example of AceClamp's time-saving ingenuity is Color Snap®, a snow rail system that features snap-in ice flags and the ability to match your snow retention to your roof.

Our innovative Solar Snap™ Racking System is coming soon, designed explicitly for shoreline/ island environments that experience harsh weather conditions with high winds up to Cat5. **MOH**



**SOMETIMES
IT'S GOOD
TO JUST
BLEND IN**



INSTALLS IN A SNAP & LETS YOU MATCH
YOUR SNOW RETENTION TO YOUR SSMR!

No Set Screws • Aircraft-grade Aluminum • Pre-Assembled

860-773-4144 | AceClamp.com



**COLOR
Snap®**

by **ACECLAMP®**

2022 METAL OF HONOR WINNER

Atlas Bolt & Screw

METAL OF HONOR AWARDS: 1 ■ WEBSITE: www.atlasfasteners.com ■ PHONE: 800.321.6846

Wow! Atlas Bolt and Screw is honored to have been awarded the Metal of Honor award. Thanks to everyone that voted for us! It's especially rewarding to have been chosen by our customers and peers during what was one of the most challenging years ever for distribution.

Our business mindset and daily focus is that we win and succeed when our customers succeed. Quality products, a strong and dependable supply chain, our national footprint and a team that just "gets it done" have made Atlas the industry leader since 1896.

Being awarded the Metal of Honor for 2021 sets the bar high for 2022 and we look forward to exceeding expectations of providing industry leading products and excellent customer service. As we look to the future, our commitment to you will stay the same — to keep innovating products and to always make sure our customers are the top priority! **MOH**



A large graphic for Atlas Building Products. At the top left is the Atlas Building Products logo, featuring the word "ATLAS" in a large, blue, sans-serif font with a stylized 'A' that incorporates a bolt head, and "BUILDING PRODUCTS" in a smaller, blue, sans-serif font below it. To the right of the logo, the text "YOUR FASTENER AND BUILDING PRODUCT SPECIALISTS" is written in a large, green, sans-serif font. Below the logo and text, there are several images of Atlas products: a large blue-headed screw, a tube of Atlas UniBond adhesive, a yellow circular seal that says "METAL OF HONOR 2022", a small American flag with "MADE IN USA", a QR code, and two small containers of Atlas Fastener Plus. At the bottom, a green banner contains the text "PLEASE CONTACT US FOR ADDITIONAL PRODUCT DETAILS" followed by "WWW.ATLASFASTENERS.COM | INFO@ATLASFASTENERS.COM | (800) 321 - 6846" and "ASHLAND, OH | FLAT ROCK, NC | HOUSTON, TX | SALEM, OR".

2022 METAL OF HONOR WINNER

Direct Metals, Inc.

METAL OF HONOR AWARDS: 2 ■ WEBSITE: www.directmetalsinc.com ■ PHONE: 855.800.8878

Direct Metals Inc. (DMI) supplies fasteners, solid and vented closures, and other building accessories to the commercial, agricultural, industrial, and residential building industries. Key to its objective of bringing value to all its business partners is its commitment to a high level of product quality and customer service. DMI has an extensive network of authorized distributors to whom product is shipped from 2 convenient distribution centers in Fort Myers, Florida, and Plymouth, Indiana.

The core of the DMI product line is its extensive line of 304 SS cap SCAMP and zinc-aluminum alloy head DIRECT SEAL metal roofing fasteners for residential, post-frame, and pre-engineered metal buildings. Coatings and paint systems are now very sophisticated on metal roofing panels. DMI's long-life fasteners provide a 40-year warranty against red rust and match the panel warranties, giving building owners peace of mind that their investment is secure.

There is also a complete line of DMG85 coated PAN CLIP

Pancake and Wafer head screws, panel clips, and painted rivets for standing seam roof systems. The 304 SS SCAMP and PAN CLIP all meet strict Dade County requirements for corrosion resistance. Solid 3' foam closures and vented 10' and 20' rolls provide protection and ventilation in roof systems. A complete line of butyl mastic, tube sealants including the new Geocel Phantom for painted metal roofs, Dade County listed concrete anchors, Florida Building Code approved pipe flashings for metal and shingle roofs, PVC and polycarbonate panels for skylights, and reflective foil insulation round out the product offerings.

Direct Metals Inc. is truly a one-stop shop for all fasteners and accessories on a building project. We would like to thank the readers of *Metal Roofing Magazine* for this Metal of Honor recognition. We will continue to work hard to earn our customer's trust as we continue to pursue our mission of bringing value to all of our business partnerships. **MOH**



Whether your metal roofing or metal building project is new construction or replacement, make sure you specify the most versatile long-life fastener available today—

#12 SCAMP STEELZIP/WOODZIP

- 304SS Cap & EPDM washer combination provides lifetime protection for your metal roof. WOODZIP SCAMP includes a 304 SS/EPDM bonded washer for enhanced strip out prevention in light density wood.
- WOODZIP HI-LO Type 17 thread design is larger than traditional #12 diameter. It is designed for maximum strip out in OSB & other light density wood.
- #12 WOODZIP is an excellent choice for new construction or replacement of #9/#10 fasteners that have loosened.
- 5/16" HWH provides exceptional pullover strength versus a traditional 1/4" HWH on metal to wood screws.



DADE COUNTY LISTED



- STEELZIP self-drilling point is designed to drill 10-16 gauge steel purlins consistently with no "point walking". The 1/4" diameter stitch screw securely fastens 26 gauge side laps & other light gauge trim.
- DMG85 corrosion resistant coating over zinc plating provides additional protection on fastener shank. Meets Dade County, FL requirements for corrosion protection. Both parts are ideal for coastal high corrosion areas & are available in many powder coated colors for additional protection.

855-800-8878

www.directmetalsinc.com

2022 METAL OF HONOR WINNER

East Coast Fasteners

METAL OF HONOR AWARDS: 8 ■ WEBSITE: www.plyco.com ■ PHONE: 800.558.5895

East Coast Fasteners Wins Eighth Metal of Honor

This is getting to be a regular occurrence and that's a good thing. East Coast Fasteners is proud and excited about being recognized by the readers of *Metal Roofing Magazine* as one of the top suppliers in the industry for the eighth time.

It's satisfying to know we're keeping our customers happy. We're committed to providing the highest quality products and service to the commercial construction and post-frame industries with a growing variety of fasteners designed to deliver the best product for each specific project.

Introduced in 2019, East Coast Fasteners received our patent in 2020 for the Ply-Lo Driller design intended to

be more forgiving than other fasteners when installing at a slight angle. The Ply-Lo Driller is available in colors to match virtually any panel as a #10 fastener in lengths of 1", 1½", 2", 2½", and 3".

The Driller is getting great reviews from our customers. Its design drills quickly as well as minimizes dust and pigtails. The Driller has also been designed to reduce the likelihood of "walking," thereby reducing the chance of ruining your panel during installation.

East Coast Fasteners constantly tests and improves its products to ensure we are delivering the best products available in the market. This attention to detail provides the strongest and most effective building components for fastening wood,

aluminum, steel, roof deck, and plywood.

Another recent innovation from the company, introduced in 2018, is its 40-year Ply-Lo fastener, The Ply-Lo EXTREME, a fastener designed for extreme environments. Ply-Lo EXTREME has all the features and benefits of the original Ply-Lo and has a 40-year warranty. Ply-Lo EXTREME is available in #10, #12, and #14 diameters.

East Coast Fasteners has also upgraded the original Ply-Lo fastener—the Ply-Lo EXTENDED is the fastener designed exclusively for the post-frame industry and now has a 12-year warranty.

To find the best fastener or closure for your project, contact an East Coast/Plyco territory manager. **MOH**

BUILDING CONNECTIONS



East Coast Fasteners produces durable, long lasting fasteners for all combinations of building materials.

- Quick Ship Program
- Extended Warranties
- Colors to match any rollformed steel
- High quality products for any application

East Coast Fasteners...**Building Connections** for the construction industry.



800.558.5895 ■ www.plyco.com

The FASTEST, SHARPEST, CLEANEST Drilling Fasteners Available!!

Ply-Lo Extended • Ply-Lo Extreme • Ply-Lo Driller • Ply-Fast • Metalfast
Stainless Steel • Ply-Lo Low Profile • Flashers • Closures • Wood Deck



2022 METAL OF HONOR WINNER

Graber Post Buildings, Inc.

METAL OF HONOR AWARDS: 1 ■ WEBSITE: www.graberpost.com ■ PHONE: 800.264.5013

Graber Post Buildings continues to be a leading material supplier for contractors and wholesalers across the Midwest, Southeast, Mid-Atlantic and Northeast portions of the United States. GPB has seen great success in the last century and has continued to make improvements to handle even more growth in the upcoming years. In the last two years, GPB has built a completely new facility for our truss and laminated column productions. This facility includes the latest equipment and technology available in the industry. This has helped us increase efficiency in production and keep our lead times as low as possible. This expansion also featured 6 buildings to house of the lumber for dry storage. Graber Post also added



a new roll-former in 2019 for our Board and Batten metal panel. This has been a huge hit for the residential side of business and has offered our customers more options than just a standard ag style look.

In 2003 Glen Graber (founder of GPB) purchased a similar company to Graber Post in Versailles, Missouri by the name of Martin Metal. Martin Metal has a very similar business strategy and does most of its business in the Midwest and

Southwest. Together Graber and Martin Metal cover a very wide footprint of the United States and over 85 years of experience in the metal manufacturing and post frame supply business. Each company has its own fleet of delivery trucks for timely and convenient yard deliveries.

Graber Post still operates by a practice that Glen started many years ago, offering the best product at a fair price and providing the best customer service possible. We plan to use this strategy for many years to come and we believe it will work. GPB is always open to new contractors and wholesalers to add to our dealer network. If you have any questions about becoming a partner of GPB, give us a call or visit us online. **MOH**

INTRODUCING M-RIB PANEL



Get the look of a Standing Seam roof with the ease of Ag-Panel installation.

- 29 and 26 Gauge available
- 22 Flat Colors - 6 Frost/Textured Colors
- Cut to the nearest 1/2"
- Can be installed over 2x4 purlins, but 26 gauge is recommend. 29 Gauge is adequate for solid decking.

Lap Detail



Produced at Martin Metal in Versailles, MO with the latest roll forming equipment available from The Bradbury Group.



(812) 636-7355 ■ www.graberpost.com
7716 N. 900 E. Montgomery, IN 47558



2022 METAL OF HONOR WINNER

Hershey's Metal Meister

METAL OF HONOR AWARDS: 1 ■ EMAIL: info@hersheysmm.com ■ PHONE: 877.289.3030

Hershey's Metal Meister LLC is owned and operated by the Hershberger family of central Illinois. Since our family has a background in metalworking and manufacturing, we understand the need for a reliable machine and knowledge-

able, technical support. Our company owns the North American patent rights to Variobend, the most productive folder we have ever seen. Since it is assembled in the USA, parts are readily available.

We strive to deliver in the areas that are important to you as the customer. Our goal is to provide SPEED, ACCURACY, and SERVICE. Contact our team today to ask about Variobend folders! **MOH**



Your Trim Shop Suite

Transform your coils into satisfied customers!



Variobend USA double folder



Variobend USA single folder



NEW! Slinet.
The next generation in coil processing.



INFO@HERSHEYSMM.COM
TOLL FREE: (877) 289-3030
420 PROGRESS DR. MATTOON, IL 61938



Speed. Accuracy. Service.

Don't just bend trim- Variobend it! Call today!

2022 METAL OF HONOR WINNER

Hixwood

METAL OF HONOR AWARDS: 1 ■ WEBSITE: www.hixwood.com ■ PHONE: 715.644.0765

Get It Fast. Make It Last.

Your entire business depends on how fast you can get your metal products and get it built. The Hixwood goal is to help your business grow and that means placing your order accurately, and getting it to you within a day or two whenever we can.

Massive Metal Supply

Hixwood stocks more metal than anyone in the region. You have 35+ metal colors to choose from plus metal options to meet your budget and specifications. Every project is different so we stock everything from metal trim and siding to metal roofing.

Onsite Metal Fabrication

Need something that we don't stock? We have the industry's leading equipment and will get you what you need before the other guys can even get the order to their fabricators in another state.



Experts Who Know Metal

Nothing is worse than trying to place an order with someone who doesn't understand the product. Metal is what we do! We'll place your order accurately and get you your products quickly so you can focus on your business. **MOH**



*Thank you
to all readers
for the nomination of the Metal of Honor award.*

From our grassroots heritage to our current footprint, covering the Midwest to Eastern United States, we are here to serve you! We can meet all your postframe building needs, complete packages OR if you roll your own, we stock the full spectrum of coil.



715-644-0765 — Fax: 715-644-0994



2022 METAL OF HONOR WINNER

Levi's Building Components

METAL OF HONOR AWARDS: 2 ■ WEBSITE: www.levisbuildingcomponents.com ■ PHONE: 877.897.7020

Levi's Building Components® began as a small operation in Bird-in-Hand, Pennsylvania. Founder Levi Fisher developed innovative solutions to common problems facing the metal roofing industry, such as the Snow Defender snow guards and the ReGrip™ screw originally made to replace failing nails.

Levi also developed innovative, time-saving and cost-effective methods for custom painting and color matching roofing fasteners. With a strong and well-established business, Levi's son, Steve Fisher, became the new owner and CEO and brought the company into a period of growth with a rapidly expanding catalog of products and a newly constructed, state-of-the-art facility in 2021.



Today, Levi's Building Components® products can be found on homes and buildings nationwide. Suppliers across the country trust its ability to deliver on consistent product quality, customer ser-

vice and quick shipping. With a large and continuously growing line of products, Levi's Building Components® is the one-stop shop for reliable metal roofing and post frame accessories. **MOH**



WE HAVE INVENTORY!

Experience our industry leading quick ship service!
Over 75% of our orders ship complete same or next day!

Popular Products Include:

FloVent®



Fastgrip®



Snow
DEFENDER®



Call us today about becoming your preferred supplier!

(866) 520-3453 | www.levisbuildingcomponents.com

2022 METAL OF HONOR WINNER

Logan Stampings

METAL OF HONOR AWARDS: 5 ■ WEBSITE: www.loganstampings.com ■ PHONE: 547.722.3101

Providing You With All of Your Precision Metal Products

For over 50 years, Logan Stampings has been providing the highest quality metal building components, clips, parts, and assemblies worldwide. We proudly combine our history in the industry with new technology to allow us the versatility to grow with the ever-changing needs of today's customers.

Our commitment to exceeding our customers' expectations is what makes us a leader in the metal stamping and fabrication industry.

With an impressive 170,000+ square feet of state-of-the-art equipped facilities, we supply metal building components to

everyone from the large metal building manufacturers to the independent, on-site roll-formers.

Logan Stampings manufactures roof clips and accessories for BPD, which offers a full line of clips for standing-seam (roll-formed) panels, including those produced by New Tech Machinery, Englert, Knudson, Quadro Pro, Ultra Seam, and Zimmerman Metals roll-forming machines.

We are very pleased to have been chosen once again as a Metal of Honor award recipient by the readers of *Metal Roofing Magazine*.

The employees of Logan Stampings believe that our success is a direct result

of our personalized service that we give to each and every client—something that can easily be taken for granted in today's fast-paced world. We are problem-solvers and take great pride in using our wealth of knowledge, cultivated over the past 50+ years, to satisfy each client's individual needs.

Proud to Provide Material Manufactured in the USA

Logan Stampings believes in the importance of keeping materials manufactured in the United States. This value is and has always been a central focus of our company and our clients.

MOH

METAL ROOFING MAGAZINE
METAL OF HONOR
2022

Thank You

Supplying clips and accessories for the Metal Roofing industry!

From our entire team - Thank you for awarding us with the Metal of Honor!

547-722-3101
LoganStampings.com

LOGAN
STAMPINGS

LSI GROUP INC.
METAL BUILDING COMPONENTS

ROOF HUGGER

bpd

LOGAN
STAMPINGS

2022 METAL OF HONOR WINNER

Malco Products

METAL OF HONOR AWARDS: 7 ■ WEBSITE: www.malcotools.com ■ PHONE: 320.274.7387

Malco is a leading manufacturer of high-quality, American-made tools that set the standard for efficiency and safety on the job.

Malco's approach to innovation is one of continuous improvement. The original TurboShear® was first introduced in 2003, and Malco has since introduced 16 additional drill attachments and air tools for cutting and fabricating a broad range of building materials and sheet metal, including a full line of TurboShears for the metal roofing trade.

The powerful jaws of the TurboShear® Heavy Duty navigate precise cuts in up to 18-gauge steel, including straight, curved or square cuts. The slender, elongated jaws of the TurboShear® Corrugated Metal easily follow corrugated and trapezoidal profiles of building and roofing panels. And the compact TurboShear® MD double-cut head navigates 90° outside angles and is ideal for cutting through seams.

For more information, visit www.malcotools.com. **MOH**



**Turn your Drill into a
TurboShear!**
FOR CORRUGATED METAL ROOFING

Patent No. 9,649,702



Malco®

360°

TSCM

Malco's Corrugated Metal TurboShear works faster than manual metal roofing shears. This portable attachment fits a drill you already own to make easy cross, lengthwise, and precise circular and square outlet cuts in pattern corrugated metal roofing and (box) pattern metal roofing panels. Featuring elongated blades with compact jaws to create a steep 75-degree offset for a nearly vertical approach when starting a cut.

Drill Not Included.



Malco Products, SBC
Annandale, MN, U.S.A.
www.malcotools.com ©2022



2022 METAL OF HONOR WINNER

McElroy Metal

METAL OF HONOR AWARDS: 17 ■ WEBSITE: www.mcelroymetal.com ■ PHONE: 318.747.8097

McElroy Metal – Promoting a Predictable Outcome

Roofing contractors can increase revenue and profit by adding recover roofing to their sales arsenal with industry-leading recover solutions from McElroy Metal.

Recover solutions from McElroy Metal include efficient methods for metal-over-shingle and metal-over-metal projects and provide a “predictable outcome.”

Everyone likes to know what to expect. McElroy Metal and its contractor partners work hard to present a solution that offers a predictable outcome, putting the customers’ minds at ease.

McElroy’s 138T Shingle Recover sys-



tem provides a long-term and economical solution for commercial building owners and homeowners in need of a new roof. The symmetrical standing seam metal roofing system installs directly over existing shingles with patented clips that help create an energy-saving Above Sheathing Ventilation (ASV) airspace

between the existing roof and new 138T roof panels.

McElroy Metal’s metal-over-metal 238T symmetrical standing seam roofing system provides a long-term solution to existing exposed fastener metal roofs. This method of recover is competitive with a single-ply recover and will last two to four times longer.

With efficient, economical and long-lasting solutions, McElroy Metal offers roofers and building owners long-term solutions that prevent the interruption of activity within the building. McElroy Metal recover systems require no tear-off and therefore, no waste going to the landfill. **MOH**





Discover Recover!
Metal Roof and Wall Panels
A long-term and economical solution!



Increase revenue and profits by adding recover roofing to your sales arsenal with industry leading Metal-Over-Metal and Metal-Over-Shingle Recover Solutions by **McElroy Metal!**

www.mcelroymetal.com • info@mcelroymetal.com



2022 METAL OF HONOR WINNER

Metal Rollforming Systems

METAL OF HONOR AWARDS: 1 ■ WEBSITE: www.mrsrollform.com ■ PHONE: 888.284.6794

Metal Rollforming Systems (MRS) is proud and honored to receive our first Metal of Honor award. MRS has been designing, manufacturing, and selling roll formers and accessories since 1993. We constantly strive to create the best quality roll forming equipment possible.

Metal Rollforming Systems aims to be your one-stop shop for all your roll forming needs, allowing you to save time and money when purchasing a roll former. Along with our complete selection of panel rollformers, we also specialize in custom trim profiles along with all the needed accessories to complete your metal panel needs.

As a leader in the light gauge panel rollforming market we continue to press

the boundaries of what is possible with cutting edge panel design and industry leading innovations. Some of our newer to market profiles include the Quad rib, Board and Batten, and F&J trims. These have all generated great interest in the market place and have helped our customers continue to raise the bar and differentiate themselves.

We pride ourselves on helping our customers both before and after the sale. We believe this is a large of why our customers and the industry continue to recognize and honor us with awards like the Metal of Honor. Our customers' success is our success and our business is based largely on repeat customers and referrals. We are honored that our custom-

ers speak so highly of us. We strive to make the best experience for our customers and to make them confident they've purchased the right roll former from the right company.

Metal Rollforming Systems has grown from a single man building roll formers to a 100-person crew. Our complete in-house design and production allows our team to keep precision control over each aspect of the manufacturing process. This assures us that each roll former is done right and will be reliable for our customers for many years to come.

From our family to yours, thank you for the honor of this award and for the privilege of serving the industry for over three decades! **MOH**



Panel Rollformers

Titan, Signature & Patriot

Trim Rollformers

Single & Multi Profiles

Slitting Lines

Stand Alone, Cut to Length, & Slit to Recoil

Decoilers, Upenders, Shears

and much more!

**The Affordable Rollforming
Equipment Manufacturer**

888.284.6794 | www.mrsrollform.com
info@mrsrollform.com
4511 N Freya St. | Spokane, WA 99217



A 30 YEAR
HERITAGE



2022 METAL OF HONOR WINNER

MWI Components

METAL OF HONOR AWARDS: 15 ■ WEBSITE: www.mwicomponents.com ■ PHONE: 800.360.6467

MWI Components is thrilled to receive the Metal of Honor award!

After another crazy year in the post frame/metal roofing industry, our goal is to continue providing quality products to all types of builders—teaming with them as they tackle new projects requiring metal roofing.

We specialize in roofing accessories and ventilation products, such as Ridg-Vents®, Uni-Vent® and decorative cupolas. Plus, within the last few years, we've started manufacturing foil insulation: Infinity Shield™. Our foil has an extremely beneficial 2" crushed-edge tab, which eliminates measurement guessing when overlapping. Also, there is no seam on 6' and 8' rolls!

Uni-Vent® and Universal Ridge Clips

offer the most convenient method for venting standing seam and corrugated roofing panels. With Uni-Vent® II there is no need to be profile specific, since the product conforms to the rib panel. For those who prefer profile-specific systems, our Uni-Vent® Pro-Series is available for 6" OC 7-rib, 11.66" OC 4-rib or 9" OC. Finally, our Uni-Vent® III provides the same conforming benefits as Uni-Vent® II, but rather than applying to the roof panel (as you would with Uni-Vent® II), this product is applied to the ridge (prior to fastening the ridge). Finally, our Universal Ridge Clip will provide assistance with standing seams by eliminating the need for "Z" closure installation.

Cupolas offer the perfect decoration for

any metal roofing project. We offer 24", 36", 48", and 66" square cupolas along with 48" and 84" octagon cupolas (all models available with window or louvered sides).

MWI also has route trucks in many areas, so customers can conveniently combine products to reduce freight costs, inventory, and challenges.

Thanks to our outstanding customers, we have been able to support the post frame & metal roofing industry for over 35 years while becoming a leading manufacturer/supplier of cupolas, Ridg-Vents®, steel and aluminum soffits, trim, horse stalls, Dutch doors, sliding door track, polycarbonate skylight panels and foil insulation.

Once again, thank you for awarding us with a 2022 Metal of Honor! **MOH**

METAL ROOFING PRODUCTS

- Cupolas
- Labor Saver
- Infinity Shield™ Foil Insulation
- Ridg-Vent® Systems
- Soffit (Steel & Aluminum)
- Ultra-X Closure Strip
- Uni-Seal®
- Uni-Vent® II
- Uni-Vent® III
- Uni-Vent® Pro-Series
- Universal Ridge Clip

GET IN TOUCH

Website: mwicomponents.com

Phone: 800 -360-6467 Ex: 5

Fax: 800-361-3452

Literature/Brochures:

<https://linktr.ee/mwicomponents>



INFINITY SHIELD™

- Single Bubble Foil/Foil
- Double Bubble Foil/Foil
- Single Bubble White/Foil
- Double Bubble White/Foil



METAL ROOFING
METAL OF
HONOR
2022

PHOTO COURTESY OF A.B. MARTIN

2022 METAL OF HONOR WINNER

Reed's Metals

METAL OF HONOR AWARDS: 2 ■ WEBSITE: www.reedsmetals.com ■ PHONE: 800.581.4645

For over 24 years, Reed's Metals, headquartered in Brookhaven, Mississippi, has been an industry leading provider of metal roofing systems, metal roofing panels, pole barns, and pre-engineered steel buildings in the South. Reed's is comprised of 10 locations including 8 manufacturing sites and 2 storefront locations. We have 3 IAS plants which include Brookhaven, Mississippi; Florence, Alabama; and Horseshoe Beach, Florida.

Our offerings include pre-engineered metal buildings, post-frame structures, tube building structures, and storage solutions. Our quality products come with a 45-year industry-leading SMP paint warranty and we have a huge selec-



tion with over 20 colors and 10 metal panel profiles available. Reed's Metals offers Order Today, Pick Up Today on in-stock roofing and supplies and delivery within 72 hours on most products. The continued growth and success of Reed's Metals is due to our dedicated employees and our loyal customers who have chosen and installed our residential,



agricultural, commercial, and industrial products all across the region. Customer service is and will remain our top priority! Most recently, Reed's Metals was awarded a 2022 Metal of Honor Award. We are truly honored. For additional information, please visit www.reedsmetals.com or call today at 800.581.4645. **MOH**



BUYING DIRECT SAVES YOU MONEY.

Order your Pole Barns, Metal Buildings
& Metal Roofs directly from us.
WE ARE THE MANUFACTURER!



We are honored to be named a repeat "Metal of Honor" award recipient for both 2021 and 2022. It would not be possible without the support of our customers. Thank you!

20+
Years of Metal
Manufacturing
Experience
Made In The USA



reedsmetals.com • 800-581-4645

2022 METAL OF HONOR WINNER

Roof Hugger

METAL OF HONOR AWARDS: 7 ■ WEBSITE: www.roofhugger.com ■ PHONE: 800.771.1711

Thank You for choosing Roof Hugger, LLC as a recipient of the 2022 *Metal Roofing Magazine* Metal of Honor Award.

The past 2 years have been challenging for all of us and we have done very well meeting our promised delivery dates, but not always. We thank all of our customers for their understanding when we had unforeseen delays.

Despite the challenges however it was a record year for the retrofit of older buildings. We hope re-roofing of existing metal roofs is part of your product offerings. Retrofit is a steady business that is frequently negotiated work with minimal competitors.

The Roof Hugger framing system makes quoting projects easier, because we can do a preliminary design estimate up front, at no charge. This allows our contractors to accurately quote projects within days not weeks. We work with any existing metal roof panel and the new roof panel of your choice.

If you do public or military work Roof Hugger has extensive experience in meeting their specifications.

Building owners like the Roof Hugger system because it does not disrupt daily operations, is environmentally friendly - keeping old metal roofing materials out of landfills, and allows for the addition of insulation between the old and new roof keeping the building warmer in the winter, and cooler in the summer.

Whether you're a contractor, a design professional or building owner, we look forward to working with you to update your existing metal roof. We have the experience of over 108 million S.F. of retrofitted buildings, including over 4.5 million S.F. of military projects.

We know owners have a number of options for recovering their existing metal roofs. There are surface coatings, liquid roofing, single ply and other make-do systems. None of these lesser systems will provide a new roof demonstrated to meet all wind and snow code requirements plus have up to a 60-year useful life, providing to lowest life time cost, least maintenance and the best platform for future photovoltaic systems.

Get a Quote at www.RoofHugger.com **MOH**

METAL ROOFING MAGAZINE
METAL OF HONOR
2022

Thank you

Supplying Retrofit Metal Roof Subframing Systems For 31 Years.

Thank you for voting Roof Hugger into the 2022 Metal of Honor for Retrofit Roof Products 5 years in a row.

ROOF HUGGER

800-771-1711
RoofHugger.com

LSI GROUP INC.
METAL BUILDING COMPONENTS

ROOF HUGGER

bpd

LOCAN
STAMPINGS

2022 METAL OF HONOR WINNER

S-5!

METAL OF HONOR AWARDS: 12 ■ WEBSITE: www.s-5.com ■ PHONE: 866.468.1334

The Right Way® is not just a slogan—it is our credo and rule of conduct. Having served the industry since 1992 as the original inventor of an all-new and distinctive product category, we have the knowledge, research, engineering, testing, production capability, ingenuity, and expertise to develop and manufacture our products like no other.

Simple Solutions: With 60 issued patents and a track record of 30 years as the industry's leading provider of metal roof attachment technologies, S-5! is dedicated to offering permanent solutions for the life of the metal roof. It's our *only* business.

Continuous Innovation: S-5! continues to innovate new and better solutions and is in a constant improvement, invention/reinvention mode within the space we originally created.

100% Made in the U.S.A.: Made in our own automated facility, S-5! products are sold in 50 countries and installed on 2+ million metal roofs worldwide with never a single documented product or system failure.

Certified Material; Certified Manufacturing: Our manufacturing plant represents state-of-the-art equipment and automation, certified to ISO 9001-15 quality assurance standards.

We use only certified raw material and are regularly audited.

Certified Testing: We use only ISO 17025 accredited testing labs following strict ASTM standards. Accepted by the International Code Council, S-5! established the industry's testing protocols and has conducted 3,000+ individual load tests on every conceivable metal roof profile in numerous gauges and materials.

Warranties: S-5! confidently stands behind its quality assurances with the industry's only lifetime product and performance warranties on all goods sold. **MOH**

ColorGard®

Tested.
Trusted.
Engineered.

S-5!®
The Right Way!®

- Fully engineered systems, Registered PE stamp available in all 50 states
- Proven Performance Since 1992
- Limited Lifetime Performance Warranty available*
- NEW Project Configurator tool to help design projects from start to finish
- Load tested for holding strength on 500+ different roof profiles, materials & gauges

*Visit our website for warranty details



OFTEN IMITATED, NEVER DUPLICATED

The Metal Roof Experts™

888.825.3432 | www.S-5.com

Contact your S-5! distributor to learn more about ColorGard.

ST Fastening Systems

METAL OF HONOR AWARDS: 11 ■ WEBSITE: www.stfasteningsystems.com ■ PHONE: 800.352.4864

ST Advantage...Value Added Innovation

POWDERFUL™
CORROSION DEFENSE
POWDER COAT SYSTEM
Powder Coat Will Look New Many Years Beyond Wet Paint

ZXL™
NO RED RUST
ZXL™ Brand X
No Red Rust 40 Year Warranty ZAMAC Die Cast Molded Head

MB™
MICRO-BIT
SELF DRILL POINT
Multi-Layer Penetration
No Pig Tails
Consistent, Effortless Installation No Point Walking

SteelBinder™
Metal to Metal Fastening Systems
MAXX™ ZXL™
Three Unique Technologies Create A Synergy of Unmatched Performance
ST Advantage

WoodBinder™
Metal to Wood Fastening Systems
KWIKSEAL™ MB™ ZXL™ MB™
Four Unique Technologies Create Synergy of Unmatched Performance
#12 TYPE 17 The OSB Screw
ST Advantage

Specialty Fasteners

Roofjack

Sealants and Tape

Closures

Snow Retention
SnowTrax™

www.stfasteningsystems.com
Call Today! 800.352.4864
Built Strong Through Innovation

ST Fastening Systems
A Division of The Hillman Group

METAL ROOFING METAL OF HONOR 2022

ST Fastening Systems is a leading supplier of threaded fasteners to the pre-engineered metal building and post frame building industries. Product is shipped from two convenient service centers in Tyler, Texas, and Cincinnati, Ohio.

The heart of the ST Fastening product line is the MAXX SteelBinder® self-drilling screw. Its drill point design consistently penetrates high tensile steel with no “point walking.” The KWIKSEAL WoodBinder® MB with micro-bit engineering has a unique drill point that replaces the Type 17 sharp point. The micro-bit is more consistent in its drilling. It will drill multiple thicknesses of steel commonly found in metal roof ridge cap applications more consistently than a sharp point. Metal “pig tails” caused by sharp points are eliminated.

Zinc plating and clear chromate is standard on all metal building and post frame building screws. State-of-the-art Powderful® powder coating paint is an environment-friendly process that uses no chemical solvents and provides a tough barrier coat shell.

For metal roofs offering a 40-year or longer written warranty, the ZXL SteelBinder® and ZXL WoodBinder® MB micro-bit drill point complete the system. Both have a ZAMAC zinc aluminum alloy molded head. A written warranty is available upon request. Pipe flashings, solid and vented foam closures and rolls, wafer and pancake screws for standing seam roofs, and other accessories are available. Rounding out the 2022 ST product line is the #12 T-17 WoodBinder® and ZXL for OSB applications, and the MultiVent20™ ventilation material. Call for more information.

ST Fastening would like to thank the readers of *Metal Roofing Magazine* for awarding it a Metal of Honor award in 2022. **MOH**

2022 METAL OF HONOR WINNER

Snap-Z

METAL OF HONOR AWARDS: 7 ■ WEBSITE: www.snapzvent.com. ■ PHONE: 717.572.0910

The journey began in 2014 when a customer requested an alternative ridge vent. Since what they were looking for did not yet exist, this sparked our desire to engineer and manufacture a revolutionized ridge vent. The new product needed to satisfy the demands of the market and speed up the installation process on a standing seam roof.

Our goal has always been to simplify the installation process for standing seam ridge vents. We make it our highest priority to deliver a quality product that not only meets, but exceeds, the standard expectations in the standing seam roofing industry. We strive to provide innovative, time-efficient products to ease the difficulty of installing standing seam ridge ventilation systems.

Our simple commitment: We follow the commands of Christ and commit to treating you like we want to be treated. We will do our best to deliver fast, quality service, every time you need it.

The Snap-Z product allows installers to vent the peak of a standing seam metal roof in a way that air is allowed to flow, yet water and snow infiltration are restricted. The design of the Snap-Z is unique in the marketplace, a new product designed in-house by Snap-Z to work with 1" open-hem metal ridge caps. It fits between the ribs of standing seam roof panels.

A simple, unique, two-step process makes installation of the Snap-Z a breeze, and saves both time and money with its speed and efficiency: 1. Using

screws, install one Snap-Z on each side of the ridge of the roof. 2. Take the ridge cap and slide it onto the Snap-Z. Then fasten the ridge cap to the Snap-Z with a minimum of three pairs of pop rivets per 10' of ridge cap.

Snap-Z is cut to the length desired by each customer. Product specifications include:

- Net Free Area: Up to 15 square inches per 1 linear foot of ridge
- Snow Infiltration: 0
- Withstands 120mph wind-driven rain
- Withstands winds up to 110mph
- Air Flow: 730 cubic feet per min (per 10' ridge)
- Rib Height: 1", 1-1/2", 1-3/4", 2"

For more information, call us at 717.572.0910 **MOH**



SNAP-Z

**Do It Right
Do It Quick
Reduce Call Backs**

GET A RIDGE VENT THAT LASTS THE LIFETIME OF YOUR ROOF

DURABLE STANDING SEAM ROOF VENTS

"When using SnapZ I don't have to worry about the foam closures blowing out 2 years down the road."

-David Troyer, Elite Contracting LLC



- ✓ Pre-applied butyl tape
- ✓ Pre-cut and Pre-punched
- ✓ Critter-proof
- ✓ Preserves beautiful hidden fastener look
- ✓ Designed to work with 1", 1.5", 1.75", 2" standing seam profiles.

GET A QUOTE TODAY! CALL (717) 572-0910

Email: office@snapzvent.com www.snapzvent.com

Triangle Fastener Corporation

METAL OF HONOR AWARDS: 18 ■ WEBSITE: www.trianglefastener.com ■ PHONE: 800.486.1832

Triangle Fastener Corporation has been supplying a full line of fasteners, sealants, tools, and accessories for the commercial construction industry since 1977. From our 24 locations and 7 paint shops, we specialize in high-performance standard and specialty products used in a wide range of roofing applications.

We offer job site and technical support, inventory management, and delivery programs. Select from a wide array of popular commercial-grade products, including our high-performance TFC SPECIFIC™ brands.

Call us toll-free for more information: 800.486.1832. **MOH**

Corporate Office:

Triangle Fastener Corporation
1925 Preble Avenue
Pittsburgh, PA 15233

Phone:

800.486.1832

Fax:

412.321.7838

Website:

www.trianglefastener.com



ATTENTION BUILDER AND SPECIFIER

TRIANGLE FASTENER offers the largest selection of fasteners, tools and accessories for the metal construction industry.

We stock over 20,000 different standard and specialty items that are available from any of our 24 locations.

Call us toll-free today!



- Standard and Specialty Products
- Engineering Support
- Inventory Management
- Product Training
- Job Site Assistance
- FAST SERVICE!



FASTENERS

- METAL
- WOOD
- CONCRETE
- DRYWALL



SEALANTS

- SEAL
- FLASH
- COAT
- ADHERE



TOOLS

- DRILL
- CUT
- SAW
- INSTALL



800.486.1832
www.trianglefastener.com



2022 METAL OF HONOR WINNER

Union Corrugating

METAL OF HONOR AWARDS: 2 ■ WEBSITE: www.unioncorrugating.com ■ PHONE: 888.685.7663

For three-quarters of a century, Union Corrugating Company, headquartered in Fayetteville North Carolina, has served the metal building components market. Fast forward to 2022, and Union Corrugating Company is proud to celebrate 76 years as an industry leader serving the residential, commercial, and agricultural roofing and siding markets from 10 manufacturing facilities located throughout the central and eastern U.S.

Union Corrugating Company manufactures metal roofing that's more durable, efficient, and sustainable with minimal environmental impact. Our unique distribution system provides the fastest and most reliable deliveries in the industry. Our support network ensures you'll get what you need, when you need it. Your Roof. For Life. On Time and Complete!

We've seen a lot of changes over the years, but one thing remains the same: we are focused on delivering quality products, superior service, and value for our customers. We appreciate



ate our customers, partners, suppliers, and vendors for their loyalty and support during the last 76 years. Most recently, Union Corrugating Company was awarded a 2022 Metal of Honor Award. We are truly honored.

For additional information on Union Corrugating products or services, please call 888.685.7663 or visit www.unioncorrugating.com. **MOH**



*Your Roof. For Life!
On Time and Complete!™*

ON TIME AND COMPLETE!

For All Your Metal Roofing and Metal Building Needs Call

1-888-685-7663



We are honored to be named a repeat "Metal of Honor" award recipient for both 2021 and 2022. It would not be possible without the support of our customers. Thank you!



WWW.UNIONCORRUGATING.COM



Metal Roofing Magazine was born as a supplement to *Rural Builder* magazine in 1999. A few more supplements were published in 2000. In 2001 it was elevated to a stand-alone magazine, and today it is over 20 years old.

This article was published in May 2001, and shows that metal roofing can save homeowners from expensive roof replacements without sacrificing the look and design of an historical roof.

If you have a metal roofing project on an historic building, we'd love to see it and share it with our readers! Contact Karen Knapstein, karen@shieldwallmedia.com, forwarding all the information you have about the materials used, challenges faced, and a few hi-res photos. In the meantime, enjoy a bit of metal roofing history!

Metal Passes A History Test

It took a secret weapon to get Gary Slear the metal roof he wanted.

Slear's apartment building in Lewisburg, Pa., dates from the 1860s, and is one of more than 600 buildings in the picturesque Susquehanna River town that date from the 19th century. Lewisburg takes its heritage seriously, and has set up a review board to approve any alterations to structures in its central historic district.

Slear also takes history seriously, and had already painstakingly rebuilt the four tall Victorian chimneys on the building. But the old asbestos tile roof was a mess: It was cracked and leaking in spots, and the red paint was flaking off. Given the difficulty of accessing the third-story, 12:12 roof, Slear decided right away he wanted to reroof with metal, both for its durability and ease of maintenance.

But when he approached the architectural review board, committee members assumed the asbestos tile had replaced an original slate roof, which they thought should be restored. But Slear had done his homework. He pulled out a 1905 Sanborn insurance map of the town that noted that his building had a wood shingle roof. And wood shingles had since been outlawed as a fire hazard. Impressed by this evidence, the board approved the use of a shingle facsimile.

Slear's roofing contractor, Vince Trego of Vince Trego Exterior Design, also attended the meetings, and produced samples of Tasman Roofing's Decra panels, including the Decra Shingle Plus.

After viewing the stone-coated steel shingles up close, the board approved the entire line for use in the historic district.

Slear and the board also agreed on another matter: the importance of preserving a scalloped, terracotta finial that ran along the roof ridges. "The scalloped ridgeline really makes the building special," says Slear. Several contractors had already passed on the project because of this detail. Trego scoped out the ridge with binoculars and decided he could figure out a way to save it.

Trego used a scissors lift to reach the third-story roof. Removing the asbestos shingles went quickly, passing a snap OSHA inspection of his asbestos removal practices. The crew installed 2x2 battens, which doubled as ladder steps on the steep roof, and then screwed the Shingle Plus panels into the battens from the ridge down.

It turned out the heavy ornamental ridge sections were secured only by their own weight. Trego photographed and labeled the sections, then created a special flashing for the ridge that accommodated the tiles. The detail meant no ridge vents, but the 1-1/2-in. space between decking and shingle is well ventilated at the eaves and hips. The installation was completed in June 2000 after several weeks' work.

Slear is getting a lot of compliments on his high-visibility roof. So far, the shingles are warranted for 50 years to withstand hail and winds up to 120 mph, and have already passed the test of one fierce

FLASHBACK: 2001



Crumbling, discolored, and leaking, this asbestos tile roof is history.
(TREGO PHOTOS)



Tasman's smart metal shingle has a textured appearance that will look good for decades.

winter storm that blew in a window. The Decra Shingle Plus also carries a 25-year appearance warranty on its acrylic-bonded stone chip finish, so Slear figures he won't ever have to deal with his roof again.

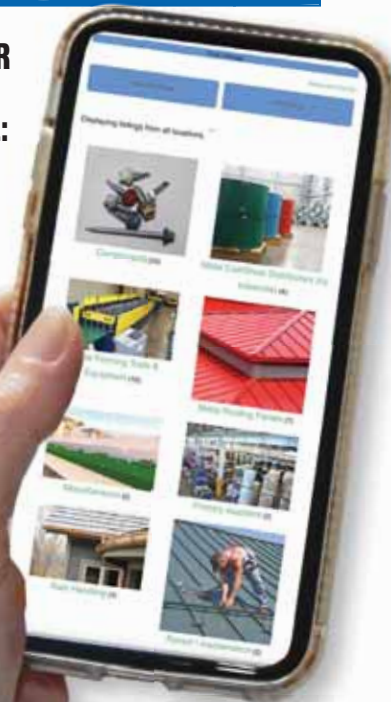
Trego, who's been roofing with Tasman products since 1989, is a true believer in metal shingles. He has installed them on buildings ranging from homes to warehouses in several states, usually bringing his small crew with him. He gets much of his business from builder's shows, where he shows the product in place on a large mock-up roof section. "People have to see and touch it before they're sold," he says.

Trego has other ways to promote his pet product. This spring he plans to donate a roof, including installation, for a Northumberland, Pa., city park gazebo with a decaying wood shingle roof. "I'll only have a couple days to install it," he says. "They use it almost every day in springtime for weddings." All he wants in exchange is a little publicity for his business, and for metal shingles. **MR**

**METAL
ROOFING®**
MAGAZINE

ONLINE BUYERS' GUIDE

SCAN CODE FOR
ONLINE
BUYERS' GUIDE:



www.readmetalroofing.com

**THE BEST ONE-STOP RESOURCE
FOR METAL ROOFING
PROFESSIONALS**

**SIMPLY SCAN
THE QR CODE
ON ANY AD WITH YOUR PHONE
AND CONNECT TO THE
MANUFACTURER.**

Our New Digital Magazine Websites

www.ruralbuildermagazine.com

www.framebuildingnews.com

www.readmetalroofing.com

www.rollformingmagazine.com

www.garageshedcarportbuilder.com

www.roofingelements magazine.com

SOFFIT Tips & Tricks

We asked manufacturers and suppliers of metal soffit about tips and tricks to make soffit installation easier. Here's what they had to say:



www.McElroyMetal.com

McElroy Metal says the most common problems metal roofers have when installing soffit are:

- Having to cut soffit in the field.
- Using the wrong trim for proper detail.

Common mistakes to avoid:

- Avoid cutting the soffit wrong
 - Colors don't match the steel roof.
- The soffit at our company matches every color we sell.

- Cut panels with old saw blades and painted side up. Panels should be cut from the back. We precut our soffit panels to the 1/4"

Necessary tools:

- A good pair of snips
 - A metal circular saw blade
- Tips for easier installation:
- Order precut panels for faster installation
 - Make sure to use vented soffit properly, where required
 - Take care of the painted surfaces.

Tips for Trouble-Free Installation

- Ask the metal supplier if they precut panels to your size. It saves many labor

hours.

- Ask your metal supplier if they have matching steel soffit colors.



www.mwicomponents.com

Vented eaves, achieved with perforated soffit panels, draw in cool air from the outdoors, which can help keep the building cooler and give good airflow. Adequate ventilation also helps prevent ice dams from forming.

When selecting ventilation system components, including perforated soffit:

- 1) consider architectural specifications (i.e. building size/scope)
- 2) Avoid the "bigger is better" mentality. Aim to match the ventilation system to the build's needs. Consult an expert if necessary.

For any ventilation system to function properly, an equal amount of fresh air must be introduced into the space to allow the vent to exhaust the air out through the ridge. Without an equal or slightly greater inlet area, no ridge vent will function properly. In fact, improper ventilation will produce stagnant air. In some cases a lack of intake can even lead to a vacuum at the ridge as air is pulled in. This may result in water and/or snow damage.



www.ReedsMetals.com

Jasson Johnson, Reed's Metals Metal Roofing Specialist and Masters Trainer, shares this advice when installing soffit:

The most common problems metal roofers have installing soffit are:

- Getting level with the Z on the wall.
- Making sure you are keeping the fascia level as you are installing the soffit.
- Fascia that is not level or the fascia going in and out from the building.

The most common tools are hand snips, a level, and a cutting table for multiple sized pieces. "I only use Midwest offset snips," said Johnson. "I have used many through the years. Offset snips keep your hands away from the metal so you are less likely to cut yourself.

"A good set of snips will actually distort the piece you are getting rid of, or throwing away," he continued. "The piece you are keeping will look like it came from the factory, or not distorted."

Tips for Trouble-Free Installation

- Always stay ahead of your measurement as you are installing. Make sure the size you are needing is not getting smaller or bigger on the fascia.
- Always check for level, and don't over tighten. **MR**

Warranties: Who Is Responsible?

Considerations For Metal Roofers

By Tracy Schubert

Warranties are an essential part of selecting the right metal roofing for your customer's home. There are many points of consideration but three of critical importance are the ones for the paint, metal substrate and the installation. The best product in the world has no value if problems show up and there is no one to repair it. There are two important areas of warranty responsibility—manufacturer and installer.

To start down the path that will maximize your customer's experience, make sure they receive a physical copy of all relevant warranties and invite them to read them. Warranties and how issues are corrected when claims emerge are not all equal in scope. Costly disputes can be avoided with a well-documented warranty. Understanding what the manufacturer covers will help you understand what issues may be considered uncovered and looked at by customers as installation related.

Are there clauses that require general continual inspections at certain time intervals to maintain the warranty? If a repair is performed are there recertification/inspection timeline constraints? Make sure the expectations are put in writing.

Failure to perform those inspection/recertification tasks may void a customer's warranty. Does the installation warranty you offer transfer with the sale of the home? If so, does it transfer with or without a fee? What is the time window for the transfer to take place?

What about pro-rated warranties where the coverage of remedies decreases as the acceptable degradation increases? For example, what happens if there is damage over a period of time and a segment needs to be replaced? Is there manufacturer coverage to make sure the look

will match the rest of the aged roof that is intact? How is the degradation amount determined and by whom?

Metal substrates also have warranty considerations. It is very important as an installer to know the manufacturer and make sure they have been in business long enough to support the warranty they are offering your customer. A "Lifetime" warranty from a company that folds in a couple years and recreates itself will not help with warranty issues.

Is there a clause that covers rust or perforations of the substrate? If so, how long will there be coverage? Galvanized steel often has its corrosion protection evaluated in relation to the amount of zinc coating on it. Galvalume can have different thicknesses of its coating alloy of aluminum and zinc.

Coatings also have special warranty considerations. It is important to know the thickness of the paint system being used on your base metal substrate. They are not all the same. Where and when was the paint applied? What degrees of chalk, fade and film integrity are covered for what length of time? The standard for fade is usually measured by ASTM methods. The units of fade are referred to as Delta E or NBS. A Delta E change that can be seen by the naked eye is a 1-2. Generally, fluoropolymer finishes cover fade for a 30-year period with a maximum change of 5 Delta E units. If the paint system is not warranted, it is very possible your customer may encounter greater fade levels.

Chalking forms on the paint's surface due to the decomposition of the resin. Lesser quality finishes are more likely to produce higher amounts of chalk. It is important to consider the environmental stresses that will accelerate this decomposition like heat, moisture, and exposure to UV rays to make sure you are

using the best product for your customer.

What happens if a product is later found to be defective or is damaged and needs repair? Understand if one of the warranties covers the corrective installation costs. It may or may not, and that is important for your customer to know. If rooftop solar panels are installed and need to be removed to do a substrate repair, who takes the solar off to fix the area covered under the warranty repair? Who covers the cost?

Do you have the documented history of warranty fulfillment to give your customer confidence in your installation warranty? Are there examples of when something has gone wrong with an installation and you have made it right? Keep those examples in your back pocket in case you are asked, because it demonstrates your commitment to the type of customer service that results in customer satisfaction.

There are many things to look at when comparing warranties for metal roofing components. Those who respect and responsibly handle their customers will be happy to explain all the protective benefits they offer their clients, both short term and long term for the substantive and aesthetic components of the products they are seeking. Metal roofs are truly a desired investment for those seeking the low maintenance, long-lasting solutions for their homes. It is worth the time to understand exactly what is backing the investment of time and money your customers are putting into their metal roof. **MR**

Tracy Schubert is a book editor at Shield Wall Media, LLC. Schubert has edited more than a dozen books over the course of her career including the 2022 release, *Pro Tips On Your Metal Roof*.

BUSINESS CONNECTIONS

DAY STAR™
High Performance Natural Lighting Systems

Let light in, naturally.

- ✓ Roof Connection Components Included
- ✓ Even, glare-free light distribution
- ✓ Energy Conservation & Efficiency
- ✓ Trouble-free Installation

GIVE US A CALL TODAY!
866-7-DAYSTAR



Golden Rule
FASTENERS

**QUALITY PRODUCTS
COMPETITIVE PRICES
& MOST ORDERS SHIP THE SAME DAY**

- Screws • Closures • Ridge Vent
- Pipe Flashings • Butyl Tape • And much more!

Ph: (334) 283-4030 - FAX (334) 283-4032



PROTECTION YOU CAN COUNT ON!

SSG Classic Snow Stoppers
Made of all stainless steel products.

RMG Premium Snow Stopper
Made out of 14-gauge stainless steel.

MADE IN USA

Contact us and we can give you all the details!
717-209-0418

WE WELCOME WHOLESALERS!



Your Single Source Equipment Provider

- Pre-Cut Rollformers
- Post-Cut Rollformers
- Trim Folders
- Trim Rollformers
- Slit & Recoil Lines
- Controls

THE BRADBURY GROUP

1.620.345.6394
bradburygroup.com



PSI Green Post™
Planet Saver Industries

THE MOST AFFORDABLE, ALL-IN-ONE SOLUTION FOR IN-GROUND POST DECAY AND UPLIFT RESTRAINT

P (610) 377-3270
www.planetsaverind.com

Made in the USA



DMI = BUILDING INVESTMENT PROTECTION

Let DMI complete your building project with Code Approved & Warrantied:

**HWH & PANCAKE FASTENERS • ANCHORS • PIPE FLASHINGS
REFLECTIVE INSULATION • POLYCARBONATE PANELS
SOLID & VENTED FOAM CLOSURES**

www.directmetalsinc.com 855-800-8878



Proudly Serving Customers Since 1998!

REED'S METALS
www.reedsmetals.com

BUY DIRECT AND SAVE!

We are the manufacturer specializing in:

- ▶ Metal Roofing
- ▶ Post Frame & Tube Buildings
- ▶ Pre-Engineered Metal Buildings & Storage Solutions
- ▶ Components and Accessories

**45 Year SMP Paint Warranty
Over 20 Colors Available
Order Today, Pick-Up Today
On In-stock Roofing & Supplies
Delivery within 72 Hours on Most Products**

Call Today 1-800-581-4645




SAFE-WAY
GARAGE DOORS

Make a Statement.

A Lifetime of Quality and Relationships

3814 E. US 30 Warsaw, IN. 46580 • (574) 267-2813



BUSINESS CONNECTIONS



PANEL ROLLFORMER



TRIM ROLLFORMER



SLITTING LINES

PREMIUM QUALITY
ROLLFORMING MACHINERY



ASC MACHINE TOOLS, INC.
MADE IN THE USA • EST. 1949

WWW.ASCMT.COM TEL: (509) 534-6600



PURLIN LINES



DECKING LINES



CHANNEL LINES



UNITED STEEL SUPPLY

STEEL PRODUCTS FOR THE METAL ROOFING & METAL BUILDING INDUSTRY

Understanding Superior Service

512-263-0954 • unitedsteelsupply.com





TOP 10 PRODUCT
2021



LEVI'S
BUILDING COMPONENTS

Did you know...

Currently over 75% of our orders are shipped complete same or next day!

If service matters, call (877) 897-7020 or visit www.levisbuildingcomponents.com today for the Levi's experience!



2021 METAL ROOFING TOP 10 PRODUCT



METAL OF HONOR

TAKE THE GUESSING OUT OF THE INSTALLATION.
Will the pipe flashing you have handle the correct pitch?

The NEW and IMPROVED Master Flash® Roof Pitch Data Calculator
From the largest to the smallest Pipe Boots Available




Master Flash® Roof Pitch Data Calculator

<https://rpc.aztecwasher.com>




TOP 10 PRODUCT
2021



UNION
CORRUGATING COMPANY

*Your Roof. For Life!
On Time and Complete!™*

www.unioncorrugating.com
1-888-685-7663

**Metal Roofing, Metal Panels,
and Metal Building Solutions**

Since 1946, Union Corrugating has been an industry leader serving the residential, commercial, and agricultural roofing and siding markets.




METAL OF HONOR



Fight Condensation Without Insulation

Ask for it from your preferred steel panel supplier

DRIPSTOP
Condensation control

www.dripstop.com or call us at: 1 (937) 660-6646




METAL OF HONOR



I BEAM
SLIDING DOORS

DOORS THAT WORK!

960 E Cemetery Ave, Chenoa, IL 61726
815-945-3667 • ibeamdoor@gmail.com




MADE IN USA

Manufacturer of Roll Forming Equipment



Acu-Form
ROLL FORMING EQUIPMENT

Phone: (330) 674-4003
Fax: (330) 674-4035
Email: acu-form@safecommail.com • Website: acuformequipment.com





SAMCO
People. Products. Passion.

Providing Complete Turnkey Roll Forming Solutions for 50 Years

1 416 285 0619
www.samco-machinery.com

Graham Good Deals

-Log Cabin Siding Wood & Vinyl	-Rebar & Concrete Wire
-1x6 & 1x8 T&G Knotty Pine	-Fence Post & Fence boards
-2x6 T&G SYP & Treated	-Wood Barn Siding
-6" & 8" Cedar Bevel Siding	-Used Guardrail
-Framing & Treated Lumber	-20' & 40' Used Cargo Containers

OUR DIRT CHEAP PRICES ARE POSTED ON OUR WEBSITE OR CALL FOR A DELIVERED PRICE TO YOUR LOCATION



A.W. GRAHAM LUMBER LLC
Website: www.grahamlumber.com
Phone: 1-877-845-9663




3RD ANNUAL Construction Rollforming Show

OCTOBER 26-27, 2022
New Orleans
Ernest N. Morial Convention Center

FOR MORE INFORMATION CONTACT GARY REICHERT: gary@shieldwallmedia.com • 715-252-6360







DID YOU KNOW?

It costs less to buy a Business Card ad than it does to have cards printed.
We even give your "cards" to more than 40,000 potential customers.



Actual Card Size (3.5" x 2")

FOR MORE INFO CONTACT MISSY BEYER:
missy@shieldwallmedia.com 920-216-3007



Cool Roofing Technology

Coatings Designed To Reflect Solar Radiation & Prevent Heat Buildup

By Lon Bauer, Product Development Manager, APV Engineered Coatings

In an effort to reduce operating costs, shrink power plant-generated greenhouse gas emissions, obtain green building certifications, and make building materials last longer, owners and managers of commercial buildings are looking for ways to lower their building's energy consumption. Among the many energy-savings strategies they may use, "cool roofs" have gained considerable traction.

Cool roofs are designed to reflect solar radiation and emit heat more efficiently, to reduce heat build-up (HBU) on the roofing substrate and inside the building, as well as potentially reduce air conditioning loads. Cool roofs can be achieved either by installing solar-reflective materials during initial construction or by refinishing an existing roof with a solar-reflective coating, making cool roofs a winning strategy for new-build and renovation projects alike.

Energy Use in Commercial Buildings

On average, commercial buildings account for 18 percent of the country's primary energy use and 35 percent of its electricity consumption; and the U.S. Environmental Protection Agency

estimates that 30 percent of that energy goes to waste. Because cooling systems consume 15 percent of the electricity used by commercial buildings, property owners can recognize significant savings by reducing the energy required to run them.

Improved energy efficiency does more than help commercial buildings save on operating costs. It can also help them achieve credits toward green building programs such as the U.S. Green Building Council's (USGBC) *Leadership in Energy and Environmental Design* (LEED®) program, the Green Building Initiative's Green Globes™ program, and the International Living Future Institute's Living Building Challenge™. Certifications in these programs provide building owners with a valuable point of differentiation to help them attract and retain tenants.

Improved energy efficiency also helps commercial buildings reduce their contribution to urban heat islands (UHIs), further improving their environmental footprint. UHIs form when trees and other vegetation are replaced with buildings, roads and other heat-absorbing infrastructures that emit heat and make the outside air warmer. According to the Lawrence Berkeley National Laboratory, UHIs can increase air conditioning energy use, impair air quality by accelerating the formation of smog, and aggravate heat-related and respiratory illnesses.

The Science of Cool

For over two decades, commercial buildings have been implementing cool roof technology to reduce energy consumption, improve occupant comfort, reduce maintenance costs and prolong the roof's service life. Just as wearing light-colored clothing can help keep a person cool on a sunny day, cool roofs use solar-reflective surfaces to maintain lower roof temperatures. While traditional dark roofs can reach temperatures of 150°F or more in the summer sun, a cool roof under the same conditions could stay more than 50°F cooler, according to data from the U.S. Department of Energy.

Three material surface properties can be measured to determine how cool or hot a roof is. Better performance in these areas can help to reduce a building's HBU.

Total solar reflectance (TSR) is the fraction of sunlight that a surface reflects. Sunlight that is not reflected is absorbed as heat. Solar reflectance is measured on a scale of 0 to 1. A surface that reflects 55 percent of sunlight has a solar reflectance of 0.55. Most dark roof materials reflect 5 to 20 percent of incoming sunlight, while light-colored materials typically reflect 55 to 90 percent.

Light reflectance value (LRV) is similar and is typically applied to paints and coatings. It is defined as the total quantity of visible and usable light reflected by a surface in all directions and at all wavelengths when illuminated by a light source. LRV runs on a scale from 0 percent to 100 percent. The average blackest black surface has an LRV of approximately 5 percent while the whitest white has an LRV of about 85 percent.

Thermal emittance describes how efficiently a surface cools itself by emitting thermal radiation. It is measured on a scale of 0 to 1, where a value of 1 indicates a perfectly efficient emitter. Nearly all nonmetallic surfaces have high thermal emittance, usually between 0.80 and 0.95.

A roof surface's **Solar Reflectance Index (SRI)** is another metric for measuring coolness. It is calculated from the solar reflectance and thermal emittance values. The higher the SRI, the cooler the roof will be in the sun. For example, a clean black roof could have an SRI of 0 while a clean white roof could have an SRI of 100. Dark roofs usually have an SRI less than 20.

The Cooling Effect of Coatings

Short of physical shading, the best way to achieve a cool roof is by coating it, whether in the factory by the roofing material OEM or applied in the field by a professional coating contractor.

However, not all coatings provide the performance needed to achieve high TSR, LRV and thermal emittance. For example, exterior latex and premium acrylic binders in paints will break down when exposed to solar irradiance, allowing dirt, mold and mildew to infiltrate the coated surface, which reduces TSR and related energy savings. This break down is called film erosion, where the coating chalks and wears away from the substrate and will continue to do so until the coating no longer protects the surface.

More About Cool Coatings

AkzoNobel

AkzoNobel's Cool Chemistry products for roofing applications utilize ceramic and inorganic infrared reflective pigments. These special pigments are designed to reflect infrared energy while still absorbing visible light energy, thus appearing as the same color yet staying much cooler.

When Cool Chemistry coatings are used on metal roofing, the result is a sustainable building material that can lower air conditioning costs, reduce peak energy demand, and help to mitigate urban heat island effects. When used on roofs and walls, the coatings can help reduce air conditioning costs by up to 15 percent in hot climates.

Long term durability needs to go hand-in-hand with the gains in energy efficiency that are possible with solar reflective pigments. AkzoNobel's Cool Chemistry formulations offer the same durability and resin technology as standard versions, along with the benefits of solar reflective pigmentation.

Sherwin-Williams Cool Coatings

Sherwin-Williams explains: Cool metal roofing is one way to mitigate the urban heat island effect. Higher reflectance means lower surface temperatures, reducing ambient air temperatures. Metal roofing is also environmentally friendly due to its durability, recyclability and light weight. Sherwin-Williams cool coatings systems like Fluoropon SR, WeatherXL and Fluorothane SR contain solar-reflective pigments to create a more energy-efficient product. Cool coatings systems help you obtain LEED v4 Heat Island Reduction Roof Credit as well as ENERGY STAR qualification. [www.sherwin-williams.com/] **MR**

Coating systems formulated with polyvinylidene fluoride (PVDF) resin, on the other hand, resist photochemical degradation to deliver better long-term protection. PVDF's incredibly strong carbon-fluorine bonds stand up to film erosion, even under exposure to the elements, allowing its protective properties – including TSR, dirt shedding, algae and mold resistance, color retention and chalking resistance – to last significantly longer. Dirt shedding and algae/mold resistance properties are particularly important as dirty surfaces reduce solar reflectance.

A coating's pigments also play a crucial role in its TSR, LRV and thermal emittance properties. For example, organic pigments can break down over time when exposed to UV energy and the elements. Complex inorganic pigments, on the other hand, contain mixed metal oxides that reflect the sun's rays. In

COVER STORY

comparison to organic pigments, complex inorganics, especially IR-reflective types, and when used in a PVDF-based formulation, are encapsulated by the fluoropolymer for additional protection from the elemental exposure that can break them down and therefore maintaining their color for much longer.

Keeping Your Cool

The sun's heat is one of the biggest contributors to reduced durability and longevity of roofing systems. The right protective coating can help reduce film erosion and heat absorption by reflecting UV and infrared radiation. Such high-performance coatings can also resist buildup of dirt, mold and mildew, keeping them cleaner, reducing the amount of maintenance needed, and allowing the reflective properties to be sustained for longer. **MR**

Lon Bauer is a product development manager at APV Engineered Coatings. Mr. Bauer has over 25 years of expertise in the chemical and coatings industry. Over the course of his career, Lon has received two patents and developed commercialized chemistries including high-performance PVDF coatings under the brand NeverFade® Façade Restoration Coatings with Kynar Aquatec®, specialty bonding primers, functional coatings, textile treatments, industrial inks, adhesives and heal seal coatings for OEM and field applications.

Good – Better – Best

Within the coating industries there are three tiers of products: Good, Better and Best. Pricing and weatherability help to differentiate the tiers.

Polyester coatings are in the **Good tier**. Polyester coatings are used for rain ware, gutter and fascias — places on a building that don't receive 100 percent sunlight.

The **Better tier** is where siliconized modified polyester (SMP) products reside (such as Ceramel, WeatherXL and Ceram-A-Star). These are common in the rural construction industry.

In the **Best tier** are 70 percent polyvinylidene fluoride (PVDF) coatings. These are pricier systems noted for their highest weatherability and flexibility in architectural design, common in high-end residential and high-end commercial buildings. There tends to be much more fluctuation in popular styles and colors as consumers in this category are generally looking for something more unique and specialized.



The only publication dedicated to the effects of weather and climate on roofing.

Roofing Elements Magazine deals with the physical environment and how "Elements" like heat, moisture, wind, and sun affect roofing. The Elements need to be considered in every aspect from material choice and design to installation techniques. **Roofing Elements Magazine** provides both industry white papers and institutional knowledge from the experts who learned their trade in the real world.



3 WAYS TO SUBSCRIBE!



- Scan Code
- www.roofingelementsmagazine.com. Click on FREE SUBSCRIPTION bar
- Fill out & mail blow-in subscription card in this issue.

EDITORIAL: Karen Knapstein, karen@shieldwallmedia.com • 715-513-6767

ADVERTISING: Missy Beyer, missy@shieldwallmedia.com • 920-216-3007

Staying Cool Under Pressure

Cool Coatings Technology Provides Energy Efficiency, Aesthetic Advantages

By Gary Edgar

The Earth is getting warmer. According to a recent study by the National Oceanic and Atmospheric Administration (NOAA), the warming rate has risen by 0.32 degrees Fahrenheit per decade since 1981. The 10 warmest years on record have all occurred since 2005, a sign that the trend is only heating up.

With higher temperatures, commercial buildings with heat-absorbing roofs generate higher-than-normal energy costs, consume more energy and produce more energy-related pollution. This type of increased heat and energy production can lead to alarming increases in smog and ozone.

Newer cool metal coil coatings offer building owners a solution that addresses these significant challenges, while offering architects and designers a wide-range of appealing roofing aesthetics.

The Heat is Off

Innovative cool coatings are driven by infrared reflective (IR) technology that deflects solar heat and resists heat buildup, which helps buildings to stay cooler for longer with less energy for air-conditioning.

Reflective and emissivity degradation data reported by the ORNL revealed that panels exposed in different regions in the United States show only a five percent loss in reflectance for an exposure period of three years for low- and steep-slope roofs with cool coatings.

Other roofing substrates, such as PVC and EPDM, lose reflectance much sooner and require a high degree of maintenance to equal the performance of metal roofing protected with cool coatings.

These types of cool coatings are becoming more important for commercial buildings in urban areas in an effort to reduce the “urban heat island effect.” According to the Cool Roof Rating Council, an urban heat island occurs when a city is hotter than the surrounding areas due to dark surfaces like roofs and roads that absorb heat from the sun and have less shade, vegetation and tree coverage. Higher-than-average temperatures are only exacerbating the effects of these urban hot spots.

But the sustainability advantages of cool roof coatings aren't limited to energy savings.

The high percentage of recycled materials in metal roofing, coupled with the use of cool coatings to protect them, help to achieve LEED ratings, which is of growing importance. In fact, cool coatings are now required by California's Building Energy Efficiency Standards for Residential and Nonresidential Buildings.



PHOTO COURTESY OF PPG BUILDING PRODUCTS

Looking Cool

While keeping a building at comfortable temperatures by reflecting sunlight and absorbing less heat is the primary objective of cool coatings, they also offer great aesthetic opportunities.

Cool coatings can be specified in an array of light, medium and dark colors. New innovations in cool coatings also pair long-lasting color performance with exceptional fade resistance to bring a cohesive and long-lasting aesthetic to a building's metal roof.

This is due, in part, to silicone-modified polyester chemistry that improves weather resistance while maintaining gloss and color fastness longer than conventional coatings.

Specifically, cool coatings like PPG Duranar® VARI-Cool coatings—as part of its ULTRA-Cool® family of products—are produced with special-effect pigments made from silicone dioxide platelets that are specially coated with metal oxides. These pigment particles create color travel, allowing the colors to change subtly depending on the viewing angle and how the light refracts their surface area.

Introduced in 2001 as the metal building industry's first commercialized set of cool coatings, ULTRA-Cool represents a breakthrough in metal roof coatings, as it helps meet regulatory and environmental requirements while providing architects and building owners with a full palette of colors that can create lasting design legacies. **MR**

Gary Edgar is the national coil and extrusion specification manager for PPG Building Products. More information: 1-800-258-6398, ppgindustrialcoatings.com.

3RD ANNUAL Construction Rollforming Show



OCTOBER 26-27, 2022

New Orleans Ernest N. Morial Convention Center



**SCAN FOR
UPDATES**

**FOR MORE INFORMATION
CONTACT GARY REICHERT:
gary@shieldwallmedia.com
715-252-6360**

International Roofing Expo Returns to The Big Easy

By Karen Knapstein

The International Roofing Expo was held February 1-3 at the Morial Convention Center in New Orleans. The show featured nearly 400 exhibitors. But no one quite knew what to expect. With Omicron cases surging in the city, New Orleans passed strict mandates. According to the city's website:

"As of January 12, 2022, the City of New Orleans is under an indoor mask mandate. Masks are required in all indoor spaces outside of your home. The indoor mask mandate will last indefinitely.

"Proof of full vaccination (two doses of a two-dose vaccine series (e.g., Pfizer, Moderna), or one dose of a single-dose vaccine series (J&J) for all eligible individuals five years and older, or a negative COVID-19 PCR, molecular, or antigen test within 72 hours, is required at most indoor venues including dining and entertainment venues, and outdoor events where more than 500 people are in attendance."

Last August, show attendance was way down at IRE in Las Vegas. It was anyone's guess how significant the impact of the mandates would be at IRE in New Orleans. While quite a few exhibitors said attendance was down from a "normal" year, attendance was much better than it had been in Las Vegas. In fact, according to Informa Markets, which sent out a news announcement on behalf of IRE, the event had "10,002 registered professionals."

There was an upbeat feeling throughout the convention center. The vast majority of exhibitors and attendees decided to forgo wearing masks. (In case you're curious, the few who we asked said they weren't concerned because they had either already had the virus or had been vaccinated.)

When queried about his IRE 2022 experience, David Quehl, director of sales and marketing, Direct Metals, Inc., commented: "IRE 2022 was a victim of the city of New Orleans institut-

ing mask mandates AND vaccinations/COVID tests for public venues entry before the show." As a result, attendance was down from previous years, but those in attendance were highly motivated to find new sources of supply to help alleviate long lead

times. The DMI booth was steady and had good opportunities to promote residential and commercial roofing fasteners, flashings and accessories for both shingle and metal roofs. Made in the USA products with better availability than overseas factories were in high demand.

Scott Friese, sales leader at Malco Products, SBC, was enthusiastic about the show: "IRE 2022 was a success! This year's event in New Orleans was well attended, thoughtfully organized, and a great venue to showcase Malco's line-up of professional tools for roofing contractors. Show highlights include supporting training sessions with Rob Balfanz, director of Workforce Development for the Vinyl Siding Institute, and meeting many enthusiastic Malco fans! We look forward to attending next year's show, but NOLA will be tough to beat!"

Georgia Pacific's Mallory Faust was enthusiastic, as well: "As a manufacturer dedicated to customer-focused innovation, IRE was a wonderful opportunity to meet with customers and hear from them what's happening in their world. Visitors to the booth saw

our latest innovation, DensDeck® StormX™ Prime Roof Board, the first gypsum cover board designed to prepare commercial roofs for very severe hail conditions. Everyone we met was also excited to hear a new installment in our 'Four Dimensions of Protection' series will be releasing soon. We're looking forward to another great year!"

Thomas Schwarzer, ASC Machine Tools, summed it up when he said, "Thankfully the attendance of trade shows is getting back to normal or better 'pre-pandemic' status." **MR**



Metal Roofing Magazine once again sponsored the Metal Marketplace.



Dynamic Fastener is a supplier to the largest metal building manufacturers. Find Dynamic Fastener at the Construction Rollforming Show in October.



Sales representative Alex Ramos was on hand to answer questions about Aztec Washer's Master Flash and other products. PHOTOS BY METAL ROOFING STAFF UNLESS OTHERWISE INDICATED.



Chris Cox (center) and Thomas Schwarzer (not shown) manned the ASC Machine Tools space. The company has been serving the metal building industry since 1949. Find ASC Machine Tools at the Construction Rollforming Show in October. PHOTO COURTESY OF THOMAS SCHWARZER.



David Hirte (left) and Brad Shreve were on hand at the AkzoNobel booth. Find AkzoNobel at the Construction Rollforming Show in October.



AceClamp exhibited its new Solar Snap™ heavy-duty racking system, in addition to the company's other mounting solutions. Elmer Cruz demonstrates. Find AceClamp at the Construction Rollforming Show in October.



CIDAN Machinery had steady traffic at its expansive booth. Find CIDAN at the Construction Rollforming Show in October.



There was a lot of interest and heavy foot traffic at the Reed's Metals exhibit, where they featured the company's Metals Masters program. PHOTO COURTESY OF REED'S METALS.



MFM Building Products, which supplies roofers with underlayments and water-proofing membranes, celebrated its 60th anniversary in 2021.



Union Corrugating Company manufactures metal roofing that's durable, efficient, and sustainable.. PHOTO COURTESY OF UNION CORRUGATING



Andrew Mullen (far left) and David Quehl (second from right) address attendee questions in the Direct Metals, Inc. (DMI) booth. Find DMI at the Construction Rollforming Show in October.



MetalForming Inc. offers equipment from Schechtl, Jorns, Schlebach, Krasser, Schroeder Group, and other manufacturers. Among the equipment they exhibited was a Schlebach Quadro portable standing-seam roll former. Find MetalForming at the Construction Rollforming Show in October.



Innovative Insulation exhibited its Super R Deck Barrier, which they said would be less expensive, more tacky, and safer. Find Innovative Insulation at the Construction Rollforming Show in October.



project of the month



Metal Roof Panels Hit the Wall for New Rec Center's Modular Design

Located just north of the Iowa border, the southern Minnesota city of Austin is the base for the headquarters of Hormel Foods, manufacturer of – among many other brands – SPAM canned meat. Austin's latest attraction is devoted to its residents; the new Austin Community Rec Center offers locals an indoor playground, youth center and a relocated YMCA. It features a forward-looking, curvilinear design called out by standing-seam metal panels that wrap around the two most visible elevations.

St. Paul-based BWBR led the design for the new facility. Shida Du, AIA, design leader with the firm, notes the

importance of the site's location alongside the Cedar River in developing the building plan. "The building massing reacts to the riverside topography with a horizontal expression," he says. "The design of both the interior and exterior of the building creates a dynamic composition of transparency, daylight and colors in order to make a place that serves the well-being of the community."

The materials palette for the exterior includes brick in a dark manganese finish and precast concrete panels along with PAC-CLAD metal panels from Petersen, which take a leading role in defining the building's signature appearance. Interestingly, designers opted for standing

Project Overview

Location: Austin, Minnesota

Wall Panels: Petersen PAC-CLAD Snap-Clad Panels

Panel Gauge and Substrate: .040-gauge aluminum, 10", 12", and 16" widths

Roof Panels: Petersen PAC-CLAD Flush Panels, aluminum, 250 sq. ft.

Installer: Schwickert's Tecta America, Mankato, Minnesota

Architect: Shida Du, AIA, BWBR, St. Paul, Minnesota

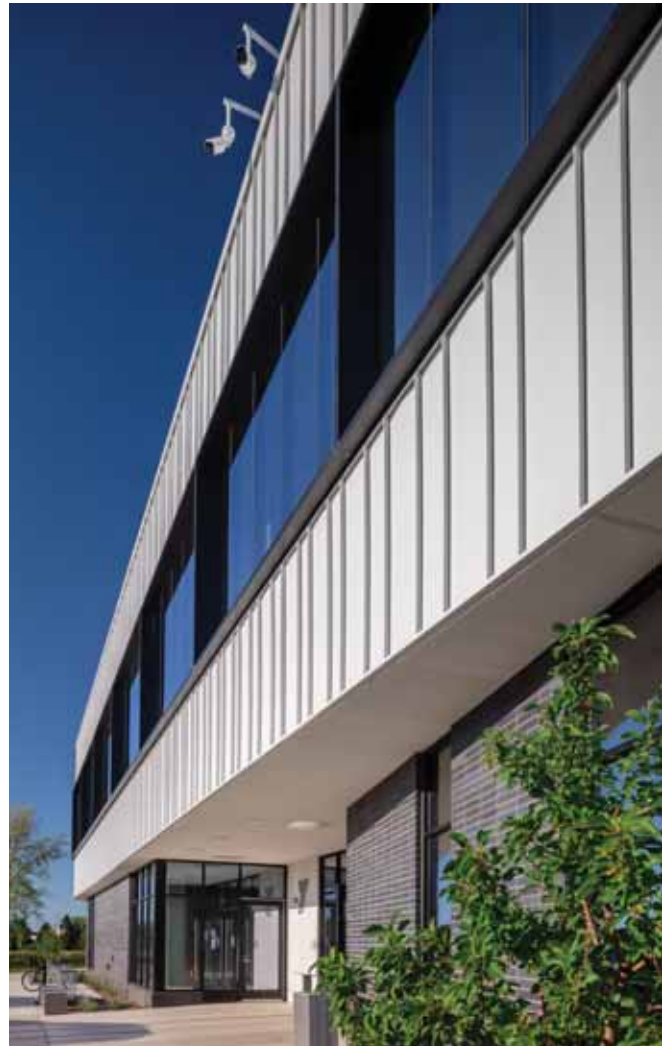


seam panels more commonly used in roofing applications, instead of, say, a more clean-lined wall panel. The panels are installed vertically to emphasize height and provide greater visual interest.

"It is an intentional choice to highlight the volume of the second-floor gym and the racetrack that surrounds it," he says. "The white color provides an energizing contrast to the charcoal-colored brick and precast, while the standing seam at the panel joints provide shadow lines that add subtle texture to the façade."

Du's team turned to Petersen to supply the panels, which were ordered in three widths to increase the sense of texture in their plans. In all, 7,083 sq. ft. of Petersen's Snap-Clad panels in a bone white finish were ordered, in 10-, 12- and 16-in. on-center widths, all in .040-gauge aluminum. An additional 250 sq. ft. of the company's Flush panels were specified as cladding for the rooftop mechanical penthouse.

Mankato, Minnesota-based Schwickert's Tecta America provided installation services for the project. Project man-



ager Tim Sinclair says the job was pretty straightforward for his team, though some added attention was required to ensure the varying widths lined up as designed. [MR](#)

GET MORE INFORMATION ABOUT PRODUCTS & SERVICES SEEN IN THIS ISSUE. HERE'S HOW:



If you are looking for more information from companies featured in this issue, fill out this form.

Mail the completed form to us, and we will have those companies get in touch with you. There's no need to fill out multiple forms; we'll do the legwork for you.

Name (please print) _____

Signature (required) _____

Company _____

Address _____

City _____ State _____ Zip _____

Telephone (_____) _____

E-mail _____ Date _____

Please check one or more boxes to subscribe FREE/Renew for 3 years:

- ☐ *Garage, Shed & Carport Builder Magazine* ☐ *Frame Building News* ☐ *Metal Roofing Magazine*
☐ *Rural Builder* ☐ *Rollforming Magazine* ☐ *Roofing Elements Magazine*

I would like to receive my subscription: ☐ By Mail ☐ Digitally

☐ Check this box if you wish to receive our Builders' Express newsletter and offers from our partners.

☐ Check this box if you wish to receive our Roofers' Express newsletter and offers from our partners.

Email address is required to receive newsletter.

**CONTACT NAME & EMAIL (OR) NAME & PHONE NUMBER ARE REQUIRED.
WITHOUT THIS INFORMATION WE WILL NOT PROCESS THE REQUEST.**

CHECK WHICH TITLE APPLIES TO YOU:

- ☐ President
☐ Owner
☐ Partner
☐ General Manager
☐ Sales Manager/Rep
☐ Engineer/Architect
☐ Vice President
☐ Foreman
☐ Installer
☐ Other _____

PLEASE CHECK THE PRIMARY CATEGORY THAT DESCRIBES YOUR BUSINESS:

- ☐ Builder, Dealer, Remodeler
or Installer
☐ Roofing Contractor
☐ Metal Roofing Contractor
☐ Building Material Dealer/Distributor
☐ General Contractor/Remodeler
☐ Manufacturer/Rep of Manufacturer
☐ Architect/Specifier
☐ Construction Consultant/Engineer
☐ Building Owner/Developer
☐ Other (Please Specify) _____

ENGAGED IN THE FOLLOWING APPLICATIONS:

- ☐ Gutters/Accessories
☐ Institutional
☐ Residential
☐ Agricultural
☐ Commercial
☐ Industrial

**SELECT A MAXIMUM OF 5 COMPANIES
TO REQUEST INFORMATION FROM:**

Company Name: _____ PAGE: _____

Company Name: _____ PAGE: _____

Company Name: _____ PAGE: _____

Company Name: _____ PAGE: _____

Company Name: _____ PAGE: _____

I understand that by providing the above information I hereby consent to receive communication regarding my subscription via US Mail, telephone, and e-mail sent by *Metal Roofing Magazine*.

Valid until June 30, 2022

MR APRIL 2022

Send to: Barb Prill • P.O. BOX 255 • Iola, WI 54945; barb@shieldwallmedia.com

INDEX OF ADVERTISERS

ASK THESE ADVERTISERS ABOUT THEIR PRODUCTS TODAY!

Company	Page #	Company	Page #	Company	Page #
A.W. Graham Lumber	55	Golden Rule Fasteners.....	53	Planet Saver Industries	53
AceClamp.....	28	Graber Post Buildings, Inc.	32	ProVia.....	26, 27
Acu-Form	54	Hershey's Metal Meister	33	Raytec Manufacturing.....	8
AkzoNobel Coatings Inc.....	BC	Hixwood.....	34	Reed's Metals.....	CVR, 41, 53
AppliCad Software.....	CVR, 10, 11	I Beam Sliding Doors.....	54	Roof Hugger	42
ASC Machine Tools Inc.....	3, 54	Kirsch Building Products - Sharkskin....	CVR, 18, 19	Roll Former Corporation.	51
Atlas Fasteners	29	Levi's Building Components.....	35, 54	S-5!.....	43
Aztec Washer Company.....	54	Logan Stampings.....	36	Safe-Way Garage Doors.....	53
Bradbury Group, The.....	53	Malco Products.....	37	SAMCO Machinery	55
Daystar Systems LLC	53	McElroy Metal.....	38	Snap Z.....	45
Direct Metals Inc.....	30, 53	Metal Rollforming Systems.....	CVR, 39	Snow Stoppers LLC.....	53
DrIpstop - FILC.....	14, 15, 54	MFM Building Products.....	CVR, 20, 21	ST Fastening Systems.....	44
Drexel Metals - Carlisle Construction Group...	12, 13	Midwest Enterprises (E-Z Gutter Guard).....	IFC	Triangle Fastener	46
Dynamic Fastener.....	16, 17	MWI Components	40	Union Corrugating.....	CVR, 47, 54
East Coast Fasteners.....	31	Owens Corning / Titanium.....	22, 23	United Steel Supply	54
EPDM Coatings.....	7	Petersen / PAC-CLAD	24, 25		

KNOWLEDGE SELLS

Pro Tips On: Your Metal Roof is a 144-page book designed to teach consumers the benefits of installing a metal roof. Effective communication with their contractor about their roof will result in a quality experience for all involved and result in the roof of a lifetime.

Chapters include: *Metal Roofing Essentials, Climate, Facts, Factors, Fashion & Financing, Look Before You Leap and an Inspirational Gallery* full of the gorgeous, quality completed-project images that motivate serious customers to buy.

NOW AVAILABLE!
AT PROTIPSAFFILIATE.COM



Our Affiliate Program allows you to customize the book to include content specific to your business. One of your pictures will even be on the cover. Use **Pro Tips On: Your Metal Roof** to educate your prospects and build you own credibility as a renowned and reputable metal roofing company.

CONTACT TRACY SCHUBERT FOR DETAILS:
tracy@shieldwallmedia.com • 715-445-1427

- 144 Pages
- Written by industry experts
- Checklist for customers to evaluate their roof needs
- Gallery of beautiful, completed metal roof installations
- Coverage of need-to-know basics, climate factors, myth fact from fiction
- Warranties protections explained
- Beneficial contract inclusions

CERAM-A-STAR® 1050

Proven Performance.

The strongest, most durable and best performing SMP coating technology.

- 7 Protecting your brand and reputation since 2005
- 7 Best in class gloss and color retention for long lasting performance

Made Easy.

Now available in a standard color palette program. CERAM-A-STAR® 1050 Select makes color complexity a thing of the past.

- 7 Reduced complexity to increase operational efficiencies
- 7 Improved availability resulting in quicker turns on projects



Step up to
proven performance
that's **made easy.**

coilcoatings.akzonobel.com/us/ceram-a-star

AkzoNobel