



2021 BUYERS' GUIDE

PRODUCT PROFILES:
METAL ROOFING
SUPPLIES & EQUIPMENT



ASC ASC MACHINE TOOLS, INC.
ADVANCING THE METAL ROOFING INDUSTRY SINCE 2001

PAGE 36



smartbuild systems

PAGE 32



ATLAS
BUILDING PRODUCTS

PAGE 33



EDCO

PAGE 38



SWI
MACHINERY

PAGE 37



us.onduline.com/pro

TUFTEX MASTER SERIES
BY ONDULINE NORTH AMERICA

PAGE 45



METAL ALLIANCE
A Value Added Supplier of Metals

PAGE 33

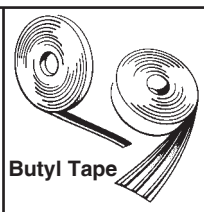
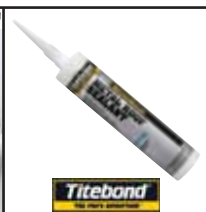


PAGE 43

RapidMaterials

DYNAMIC FASTENER

Everything for the Metal Builder & Roofer®



FREE 140 Page Full Color Tool & Fastener Hand Guide provides prices, engineering data & details product offering.

DYNAMIC FASTENER is specifically geared to handle the needs of the Metal Building Contractor. We provide in-house custom color painting of screws and rivets with just a one or two day (days, *not* weeks) lead time. Over 100 million rivets, mostly pre-painted, & tens of thousands of power tools are stocked and sold at the lowest prices. Highest quality, top name brand fasteners are stocked and sold at the lowest prices. Same day shipment on orders received by 4:00 p.m. CST. We are a supplier to the largest metal building manufacturers.

We want to be **YOUR** source for screws, pre-painted rivets, anchors, flashings, Dyna-Guard® snow retention system, safety equipment, hand tools, power tools and accessories.

7 warehouses to serve your construction needs for tools and fasteners

(MAIN OFFICE)
Kansas City • Chicago • Houston • Las Vegas • Memphis • St. Louis • St. Paul

CALL 800-821-5448 or Order Online @ DYNAMICFASTENER.COM



Call for your Free Full Color 140 Pg. Hand Guide. Better yet, call us for your next tool or fastener requirement. Discover for yourself why your peers enjoy doing business with our company!

Construction Rollforming Show: Bigger and Better in June

Dear Readers, Advertisers, Exhibitors, and Attendees: Regulations issued by the State of Ohio have forced us to postpone the Construction Rollforming Show (CRS), which was scheduled for Cincinnati in December. Several edicts were a challenge, but one we could not overcome was limiting total attendance on the exhibit floor to 300 "patrons." The State decided exhibitor booth personnel counted as "patrons"—last year, attendees and exhibitors totaled between 900 and 1,000.

Rather than offer an unsatisfactory show, we rescheduled the event to June 3-4, 2021. It's still at the Duke Energy Convention Center and the Hilton

Cincinnati Netherland Plaza. Both the venue and the hotel have been extremely supportive and wonderful to work with.

All hotel reservations are cancelled and refunded. We are in the process of issuing refunds to all registered attendees, and should be finished before this issue mails.

Personally, this is difficult for me because I tend to be stubborn and occasionally overly aggressive. My instincts are to push forward, but in this case it would not be the right move for our exhibitors or attendees. Rather than cry in my beer, I take this as a challenge: We will make the June 2021 CRS bigger and better.

We will feature our CRS exhibitors online during the entire month of

December. This is only open to those exhibitors who would have been exhibiting. You have the chance to visit some great manufacturers. The digital show is under the Events tab on www.constructionmagnet.com starting December 1.

We are still 100% on for February's Garage, Shed & Carport Builder Show in South Bend, Indiana. Same dates and same location. Hopefully I will see you there.



Gary Reichert, Publisher

Have A New Product?

If your company has developed a new product for builders or contractors, email a new product announcement to one of the contacts listed below for possible publication in the Construction Magazine Network.

Include a clear, high resolution image of the product (no logos or advertisements), along with a brief description of your product and the problems it solves.

Submission is not a guarantee of publication. We reserve the right to edit all submissions for content, length, and clarity.

- Frame Building News; Garage, Shed & Carport Builder: Karen Knapstein – karen@shieldwallmedia.com
- Metal Roofing Magazine; Roofing Elements Magazine: Jessica Franchuk – jessica@shieldwallmedia.com
- Rollforming Magazine: Sharon Thatcher – sharon@shieldwallmedia.com
- Rural Builder: Jenn Milner – jenn@shieldwallmedia.com



new products
BY RURAL BUILDER STAFF

HORSE STALL LATCH
MVI knows your horse is too smart for its own good, so they designed a new horse stall latch. This latch is a secure retention system incorporated into a new robust door design. Its HORSE PLAY resistant! The easy, low-force activation latch has a concealed latch mechanism, and there's no assembly required. Plus, installation is quick and easy with your horse. Find this horse stall latch in both left and right-hand latch configurations and 14 in more than 28 powder coat options, so you'll be able to match the stall door. — and the traditional metal pig tail latching system. MVI stall latch is available in two sizes: 30" and 42". Call today to add the new horse stall latch to your next stall order: 800.360.4467 or www.mvi.com/products

JOISTPRO METAL CONNECTOR NAIL GUARD
SINCO has added the JOISTPRO metal connector nail guard with increased rigidity to its JoistPro™ line of products. The new JoistPro™ JOISTPRO metal connector nail guard, the latest product launching from its Spokane, Washington, facility, offers a resin/cyberacrylic strap ap-

NEW PRODUCTS

FOUR'S 2200 Series Underlayment
FOUR's Reflective Insulation 2200 Series underlayment is an effective energy barrier that can greatly reduce transfer of radiant heat through roofing. The new 2200 Series underlayment's polyethylene bubble material, sandwiched between a 1.2" white foam insulating mat and a white polyethylene sheet, provides an added R-value of 1.2. When there is an air space between the 2200 Series underlayment and the roof, the system boasts an R-value of 4. While most insulating materials rely on trapping air, the 2200 Series underlayment works by reflecting as much as 96 percent of the radiant energy, dramatically reducing and holding in air-conditioned house air. "It's made in non-cooled manufacturing plants, and utility buildings. It can be used on roofs, applied to rafters or eaves, or rolled out on roof decking or existing shingles prior to installation of metal roofing or siding panels." www.foours.com

Spyder Circular Saw Blades With Metal Cobalt Teeth
Spyder Products has expanded its range of circular saw blades with the re-

base of four new options. Spyder's line of circular saw blades are triple-chippered and have ultra-tough NiCo (Nickel Cobalt) teeth for long-lasting cutting efficiency, alternating tooth level design (ATL) to create clean rip and crosscuts, and an interfacial anti-friction coating. The strong NiCo teeth of Spyder's circular saw blades are triple-chippered and, when combined with the ATL design of application — from framing and general construction to specialty demolition and vibration allowing for rapid door and window opening and closing. Polymer stabilizers reduce noise through the substrate. A 10-pack of 7-1/4" framing/general construction blades are available for professional users. www.spyderproducts.com

Roll-In Miter Gauge and Miter Gauge Frame
Roll-In Miter Gauge and Miter Gauge Frame has introduced a sturdy, easy-to-set and highly precise miter gauge along with a corresponding aluminum fence that mounts easily to the new Roll-In miter gauge. In-

CONTENTS

FEATURES

15: Product Guide

Metal roofing products and suppliers

19: Company Directory

Companies that cater to the needs of metal roofing contractors, plus complete contact details

31: Product Profiles

A closer look at the products you can use to give your customers outstanding results

52: Project of the Month

Historic Texas church's new metal roof is designed to face stormy weather



45



12



37



52

METAL ROOFING MAGAZINE

Managing Editor

Jessica Franchuk
jessica@shieldwallmedia.com
920.224.5146

Editor

Karen Knapstein
karen@shieldwallmedia.com
715.513.6767

Circulation/Subscriptions

Barb Prill
barb@shieldwallmedia.com
920.471.4846

Digital Product and Data Engineer

For help with online Classified Ads & the Business Directory contact: Steve Duberstein:
steve@shieldwallmedia.com

Publisher

Gary Reichert
gary@shieldwallmedia.com
715.252.6360

Executive Assistant

Kathy Budsberg
kathy@shieldwallmedia.com

Graphic Designers

Tom Nelsen, Kevin Ulrich

DEPARTMENTS

- 3 Publisher's Note
- 6 Editor's Note
- 8 Calendar
- 10 Industry News
- 12 New Products
- 56 Ad Index/Classified Ads
- 58 Business Connections

ON THE COVER:

Don't miss the Product Profiles from these featured companies, beginning on page 31: RapidMaterials, ASC Machine Tools, SmartBuild Systems, Atlas Building Products, EDCO Products, SWI Machinery, Tuftex/Onduline North America, and Metal Alliance.



METAL ROOFING MAGAZINE (ISSN: 1533-8711) (Volume 19, Issue 7) is published seven times annually in February, April, May, June, August, October, and December by Shield Wall Media LLC, 150 Depot St, Iola, WI 54945. Periodical postage paid at Iola, WI, and at additional mailing offices. Canadian Agreement Number: 40665675. POSTMASTER: Send address changes to *Metal Roofing Magazine*, Barb Prill, PO BOX 255, Iola, WI 54945. Copyright 2020 Shield Wall Media LLC. *Metal Roofing Magazine* and its logo are registered trademarks. Other names and logos referred to or displayed in editorial or advertising content may be trademarked or copyright. *Metal Roofing Magazine* assumes no responsibility for unsolicited materials sent to it. Publisher and advertisers are not liable for typographical errors that may appear in prices or descriptions in advertisements. Mailed free to roofing contractors and their suppliers throughout North America. Others may subscribe: \$29.98 for 1 year, \$56.98 for 2 years, and \$80.98 for 3 years.

ONLINE SERVICES:

- *Metal Roofing Buyers' Guide*
- Subscribe FREE to *Metal Roofing Magazine*
- Archived Stories
- Metal Roofing Hall of Fame
- Subscribe to *Roofers' Express* e-newsletter



CHECK OUT OUR WEBSITE @
www.constructionmagnet.com

E-MAIL THE EDITOR AT
jessica@shieldwallmedia.com





Forging Ahead With Big Changes

This special end-of-the-year issue of *Metal Roofing Magazine* is all about the very best products and services that are on the market. As you flip through its pages, you'll likely notice a number of changes compared to our previous Buyers' Guide issues. (Not to mention the heavier paper than last year—giving it a catalog-like feel!)

The annual Buyers' Guide in your hands includes a hearty company directory of material and component manufacturers and suppliers, with new QR codes that will lead you to their online listings for even more information. Simply scan a code with your smartphone or tablet to be taken to www.metalroofingmag.com. This issue has the companies' contact info, website,

and a brief description, but many of their online listings also feature product catalogs, photos, videos, and more. As you check out our directory, scan a few codes and see what the online Buyers' Guide is all about.

Next, head on over to page 31 to check out our expanded product profiles section. We added even more categories and profiles than last year, so whether you are in need of business management software, fasteners, ventilation, or anything in between, you'll be sure to find it throughout this section.

Starting next year, we're revamping our product profiles into a more helpful product feature. These features will have tips, tricks, and practical information supplied directly from trade

experts and professionals to best serve our readership. Any advice that can be shared directly from the experts is sure to be beneficial for any roofing contractor. If there's a specific product category that you're dying to know more detailed information about, please, reach out and let me know!

In case you do like the product profiles we used to include in every issue, have no fear! They will return every year in our annual Buyers' Guide. And, if we catch wind of any amazing new products or industry/supplier news, we'll still keep you informed.

Jessica Franchuk, Managing Editor
jessica@shieldwallmedia.com

POLYCARBONATE PANELS AVAILABLE!



TUFTEX **MASTER**
SERIES
 BY ONDULINE NORTH AMERICA

CALL TO ORDER TODAY
540-898-7000

MORE PROFILES & PVC AVAILABLE - US.ONDULINE.COM/PRO

Memorable Metal



"The metal roof really makes this house unforgettable. If it didn't have the metal roof, the design wouldn't have the same impact. The roof is one of the elements that catches people's eyes. The metal roof makes this house very memorable."

-Brandon Ingram, Architect, C. Brandon Ingram Design

Tallahassee Residence Installing contractor: Tallahassee Roofing Architect: C. Brandon Ingram Design
General contractor: Barton Construction Material distributor: ABC Supply Photo: jeffherrphoto.com

Snap-Clad
Metal Roofing System
Mill finish



CASE STUDY @ [PAC-CLAD.COM/TALLAHASSEE-RES](https://www.pac-clad.com/tallahassee-res)



CALENDAR

NOTE: Due to the pandemic, many events have been rescheduled or cancelled. We recommend contacting the show for updates before traveling.

2021 January

12. CANCELLED. Wisconsin Lumber Dealers Leadership Conference. Wisconsin Dells, Wisconsin. www.nlassn.org.

13-15. TRANSITIONED TO VIRTUAL. Construction Safety & Health Conference. safety.agc.org.

2021 February

4-5. 1st Annual Garage, Shed & Carport Builder Show. Century Center. South Bend, Indiana. www.constructionmagnet.com/garage-carport-shed-builder-show-home-page.

9-12. TRANSITIONED TO VIRTUAL.

International Builders Show. www.buildersshow.com.

9-11. TRANSITIONED TO VIRTUAL. ASHRAE Winter Conference & AHR Expo. www.ashrae.org.

2021 March

3-5. Frame Building Expo. Nashville, Tennessee. www.nfba.org.

4-9. International Institute of Building Enclosure Consultants International Convention and Trade Show. Phoenix, Arizona. www.iibec.org.

9-11. Associated Builders and Contractors Convention. Grapevine, Texas. www.abconvention.abc.org.

2021 April

10-14. Association of the Wall and Ceilings Industry Convention &

INTEX Expo. New Orleans, Louisiana. www.awci.org.

14-16. NEW DATES. International Roofing Expo. Las Vegas, Nevada. www.theroofingexpo.com.

2021 June

3-4. NEW DATES. 2nd Annual Construction Rollforming Show. Duke Energy Convention Center. Cincinnati, Ohio. www.constructionmagnet.com/construction-rollforming-registration.

8-10. NEW DATES. World of Concrete. Las Vegas, Nevada. www.worldofconcrete.com.

16-18. NEW DATES. The International Surface Event. Las Vegas, Nevada. www.intlsurfaceevent.com.
MR

BUILD WITH A.B. MARTIN

PREVENT CRUSHING SNOW SLIDES

With Snow Defender™ Snow Guards





Snow Defender™ 4500 Snow Guard



Snow Defender™ 6500 Snow Guard





A. B. MARTIN

ROOFING SUPPLY, LLC

Roofing & Siding • Hardware • Lumber

Ephrata, PA | Newville, PA
717-500-2753
Building Supplies for the Northeast
abmartin.net/catalog



METAL ROLLFORMING SYSTEMS





The Affordable Rollforming Equipment Manufacturer

Metal Rollforming Systems designs and manufactures reliable and affordable rollforming equipment and accessories, making us a leader in rollforming equipment manufacturing. Our unsurpassed technical support is unlike any other in the industry, we work until the job is done. Our customer's success is our success. For more information, please contact us at 509.822.8123 or visit us online.

- Single & Double Deck Rollformers
- Trim Rollformers
- *NEW* Patriot Rollforming Line
- Coil Reels

- Precision Cut Slitting Lines
- Sheet Stackers
- Coil Upenders
- Ridge-Cap Press



509.822.2123 www.mrsrollform.com





SERVICE AND QUALITY ARE THE KEYS TO CUSTOMER SATISFACTION.

At United Steel Supply, we're proud to be the country's largest distributor of Galvalume® and prepainted steel coils. We work hard to ensure that we have exactly what our customers need – along with high-quality products, outstanding service and competitive pricing. It's all part of developing long-term partnerships through customer satisfaction, something we take very seriously. So we're extremely honored to be a Gold Key recipient, because it's voted on by the people who count most – our customers.

Thank you for this honor. We promise to continue to deliver exactly what you need, without sacrificing quality or service. Because at United Steel Supply, your satisfaction is key.

unitedsteelsupply.com | 512-263-0954



©2020 United Steel Supply



METALCON Launches New Initiatives, Delivering Its Commitment to Be the Source for Ongoing Learning

METALCON, the metal construction industry's largest international event for metal construction products, technolo-

gies, and solutions, announced a variety of new initiatives that provide ongoing educational opportunities and essential training for industry professionals.

"We've been working diligently to create meaningful programs for the metal construction industry during this time

of uncertainty," said Judy Geller, Vice President of Tradeshows at METALCON. "We've lined up some of the best in the industry to connect with you virtually and to deliver exceptional programming year-round—and until we meet again in person—for a world-class event next year in Tampa!"

METALCON's new learning opportunities include:

1. METALCON Business Academy: The METALCON Business Academy program offers business-oriented courses for business, sales, and marketing leaders. Session one of six, "Building Your One-Page Strategic Plan," took place on December 2 and was produced in partnership with Danny Kerr of Breakthrough Academy. The remaining five courses will cover topics such as staffing, increasing productivity, and structuring your company for success. The first four sessions will take place virtually via METALCONLive!, with the remaining two in-person at METALCON 2021 in Tampa, where participants can earn a METALCON diploma for completing the program. Virtual classes will also be available on demand.

2. Metal Construction Association (MCA) Presents: Each month, the MCA will present technical topics of interest to you during METALCONLive! On November 18, John Trifonoff, Vice President of East Coast Metal Systems presented "Bring Your MCM to Life with a Quality MCM Fabricator." He delved into what makes one metal manufacturer better than another and revealed the truth behind quality MCM fabricators. He explained what to look for in a metal supplier and how to ensure only quality products are provided for your project. Attendees learned what testing to watch for, what certificates to be aware of, and various utilizations of quality sheet man-



**HIGH TEMP
SELF ADHERING**

ULTRA HT
WIND & WATER SEAL™

**MAX TEMP 250°F
NON-SLIP SURFACE**

Ultra HT Wind & Water Seal™ is the premium high temperature underlayment designed to keep you cool in the most extreme conditions. Discover all the advantages that Ultra HT offers on your next project.

- > Tough, durable cross-laminated top film surface
- > Maximum protection against extreme heat, rain or ice dams
- > Non-slip polymer surface for excellent foot traction
- > Self-adhering and self-sealing for a complete waterproof bond
- > ICC-ES ESR-1737, Florida Building Code FL#11842, Miami-Dade County Approved and CCMC 14048-L

Visit mfmbp.com for FREE Samples and Downloads today.

mfm BUILDING PRODUCTS CORP. (800) 882-7663

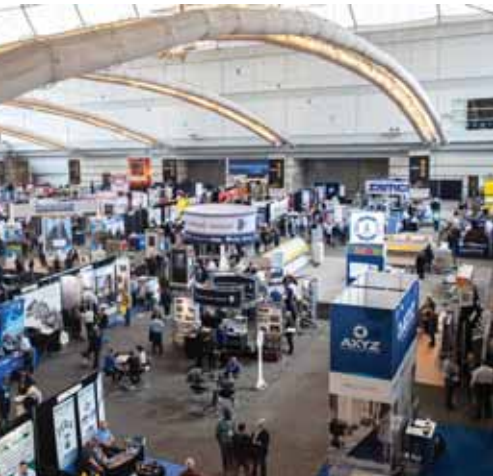
MIAMI-DADE COUNTY APPROVED



ufacturers. Learn more about MCM, its suppliers, and how to bring the MCM to life on your next project!

3. Metal Architecture with METALCONLive!: Metal Architecture with METALCONLive! launches virtually on January 13, 2021 with a four-part series that explores what's on the cutting edge of metal in architecture, innovative uses of metal in design, and sample case studies. Remaining virtual sessions will take place on April 7 and August 11, with the final session taking place live on-site at METALCON 2021.

4. METALFOCUS® Safety Certificate Program: In mid-February, Craig Schaffer, President of Safety Works, Inc.



will teach the METALFOCUS® Safety Certificate Program, a series of 20 one-hour virtual safety courses tailored to supervisors, foremen, crews, and others in the industry. Courses will focus on increasing safety, reducing job site risks, and lowering the risk of regulatory penalties and include: Fall Protection in Steel/Metal Buildings, OSHA's Steel Standard, Job Safety Analysis, Managing OSHA Inspections, Hot Work Permit Operations, and others. Registration fees begin at \$30 per class with discounts available for multiple class registrations.

All courses will be available both "live" and on-demand. METALCON 2021 takes place on Oct. 6-8, 2021 in Tampa, Florida. Visit www.metalcon.com for more information. **MR**

VS-150



- 1" & 1-1/2" "Mech Lock" Standing Seam
- Snap Lock Panels & more!
- Quick and Easy profile changeover
- Buy Now and receive a **FREE** Decoiler

Our most versatile, multiple profile machine.....forming seven 1" and 1-1/2" profiles.



ROLL FORMER CORPORATION

Ph: 215.997.2511 • Fx: 215.997.5544 • www.rollformercorp.com
Email John Dumke - jdumke@rollformercorp.com



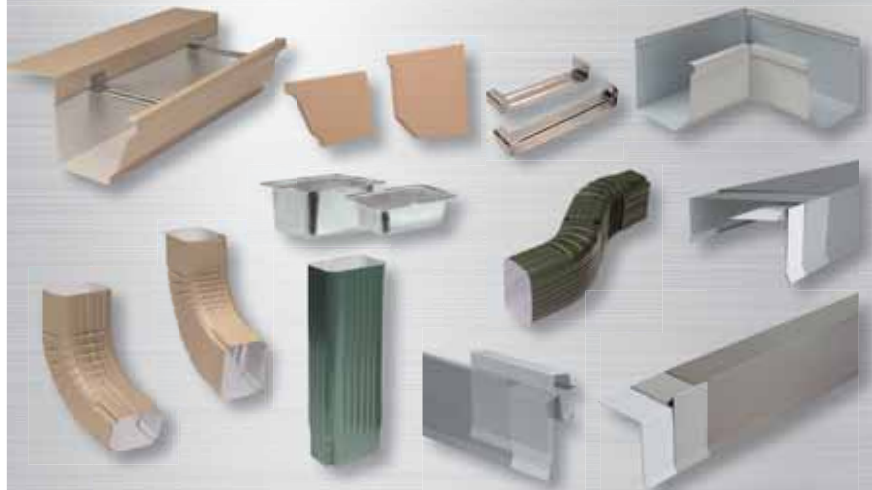
1" & 1-1/2"
STANDING SEAM

ADVANCED ARCHITECTURAL

SHEET METAL & SUPPLY



We service your needs with consistent quality, workmanship and knowledge



It's part of the reason customers come back to us time after time.

Maximize your profits by decreasing your inventory.
Reduce man hours - let us fabricate, you install.

98% of our American-made products are made-to-order and are manufactured inhouse. Our products are made from domestic metal and custom crafted to your specifications.

Contact us today to see how we can streamline your process and maximize your profits!

(231) 861-0050 | info@advarchsm.com | www.advarchsm.com

NEW PRODUCTS

Wolverine's "World's Most Comfortable Safety Toe Shoe"

The Wolverine Bolt is the first ever safety toe athletic shoe with the comfort of Wolverine DuraShocks® and Wolverine DuraSpring™ cushioning, making it the most comfortable safety toe shoe, guaranteed. The outsole is specifically tuned for slip resistance, with extended pads to increase

surface contact with the ground. Wolverine DuraShocks technology absorbs shock and returns energy for all day comfort. DuraSpring cushioning provides long-lasting dynamic cushioning, retaining more than 40% rebound than standard EVA.

Specs and tech include: a breathable stretch mesh upper, a moisture-wicking mesh lining, a removable DuraShocks PU footbed, a DuraSpring



Low Density PU midsole, a Wolverine DuraShocks Dual Suspension Pads outsole, cement construction, a nylon shank, and CarbonMAX® Composite Toe (ASTM F2413-18 M I/75 C/75 EH).

www.wolverine.com



SCREWS FOR METAL ROOFING AND SIDING

The Choice is Yours!

PANEL-TITE BURR BUSTER

- Reduces burrs for better sealing
- "Low Angle" thread keeps the screw tight
- TRI-SEAL® coated for corrosion protection



Panel-to-Wood

BLAZER DRILL SCREWS

- Fast consistent drilling
- VRT® thread resists back-out
- Zinc or stainless steel heads for warranted roofs



Panel-to-Metal

ONCEALOR LOW PROFILE SCREWS

- Largest selection & most specified
- Available in stainless & zinc heads
- FM approved for insulated panels



Concealed Fastener Panels

- FASTENING SYSTEMS AND SOLUTIONS FOR CONSTRUCTION -



TRIANGLE FASTENER CORPORATION
www.trianglefastener.com | 800.486.1832

A New Self-Adhering Fire-Resistant Roof Underlayment

Polystick XFR is a dual-purpose, fire-resistant, and self-adhered waterproofing underlayment. Utilizing ADESO® dual-compound self-adhered technology, Polystick XFR features an SBS (elastomeric) modified bitumen upper and an aggressive self-adhesive bottom compound. Patent-pending Burn-Shield Technology provides superior fire resistance. Featuring a slip-resistant film surface that can be exposed for up to 180 days. With a temperature resistance of up to 265°F, Polystick XFR is ideally suited for high temperature roof covering systems such as steel and copper roofing where fire resistance is required or desired.



www.polyglass.us

Clamp Technology for Nail Strip Metal Roof Profiles

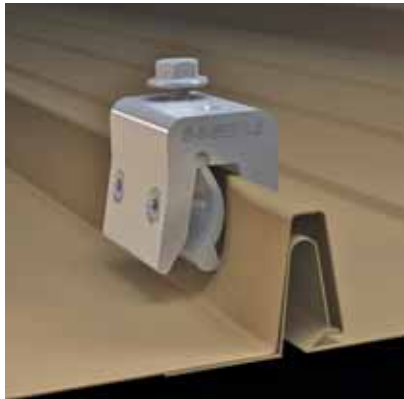
S-5! introduces the newest addition to its line of clamp product solutions, allowing rooftop ancillaries to be attached to standing seam metal roofs.

The NH 1.5 is part of the "N" line of clamps developed for nail strip profiles. Designed specifically for 1½" (38 mm) nail strip profiles with a wider horizontal dimension (> 0.475" and ≤ 0.800"), the S-5 NH 1.5 is an ideal mounting solution for VicWest Prestige, NewTech FF150, and similarly dimensioned profiles.

"More and more panel manufacturers are coming onto the scene with nail strip type profiles,"

NEW PRODUCTS

said S-5! CEO & Founder Rob Haddock. "Although they all look similar, there is a range of dimensioning. This profile is one of the most challenging out there for S-5! quality penetration freedom and affordable production costs. Our S-5! Research & Development team spent months in concept and prototyping to come up with the most versatile, cost-effective, state-of-the-art solution."



The NH 1.5 features an innovative "hinge" and forms to the shape of the seam, preventing damage at the point of attachment, while offering optimal holding strength. The reversible insert allows for superior fit on both wide and medium-width profiles.

For ease of installation, the T-30 Torx setscrews are angled to facilitate tool insertion and improve driver bit withdrawal after screw tensioning. The clamp is available in both standard and Mini sizes and made from 6000 series aluminum, with 300 series stainless steel hardware. The NH 1.5 is engineered for heavy load-critical applications, such as snow retention.

www.s-5.com

New Products continued on page 14




715-644-0765 — Fax: 715-644-0994



"Hixwood Metal is the premier source for all your steel coil, blank flat stock, and slit coil needs. Striving every day to meet the most stringent demands of our quality minded coil customers. We have over 30 smooth and textured colors available in the ever popular BeckryTech H.D.P.E paint system. Give us a call for all your coil and building accessory needs!"



 Raytec Manufacturing

Hangtite™

Gutter Hanger
with Clip



Hangfast®

Gutter Hanger



REAL®

Gutter Cover



FLASHING

Step ■ Apron ■ Roll



Rezist™



[See more at RaytecLLC.com](http://RaytecLLC.com)

CALL (877) 800-2500

Email Sales@RaytecLLC.com

NEW PRODUCTS

Ridgeline Anchor Safety System: The First Permanent, Hidden Anchor System

Falls from roofs are a leading cause of injuries and deaths in the construction industry. The good news is they are preventable! Ridgeline Safety Systems provides fall arrest solutions that make it easy for workers to tie off. The system is comprised of two main components: anchors and ridge hooks. The anchors are attached to the truss before it is set, or as soon as the old ridge is torn off in a retrofit application. These anchors provide an immediate tie-off point. They are permanent and will be covered by the new ridge cap. The Ridge Hooks are used after the ridge cap is on, and provide a tie-off point for workers or repair technicians from any industry with no additional holes in the roof.



www.ridgelinesafety.com

MR

UNI-VENT® PRO-SERIES



9" OC PROFILE

-  Withstands 100 MPH wind-driven rain
-  Use any manufacturers' ridge cap
-  Easy to install; 20' per roll
-  Material is 2" wide with standard thickness of 1"
-  Use on any roof pitch from 2/12 to 20/12
-  Same great performance as Uni-Vent® II



ROLL FORMING EQUIPMENT

10550 TR. 262 Millersburg, OH. 44654
Phone (330) 674-4003 • Fax (330) 674-4035
Email: acu-form@safecommail.com



**Manufacturer of metal forming equipment,
for commercial and residential construction use,
using D2 tool steel as a standard for our tooling.**

- Ag Panel
- Shears
- Slitters
- Hemmers
- Decoilers
- Perforators
- Wrappers
- Coil Upenders
- Roll & Tables
- Trim Machines
- Corners
- Ridge Caps
- J-Channels
- Customer Profiles



Visit us @ www.acuformequipment.com



WANTED!

Contractors and construction professionals cite locating skilled trades people as one of the major challenges to running their businesses.

Readers of Rural Builder, Metal Roofing Magazine, Frame Building News, Rollforming Magazine, Garage, Shed & Carport Builder and Roofing Elements Magazine use our publications to stay current in industry developments and best practices.

REACH THE CONSTRUCTION PROFESSIONALS WHO READ OUR MAGAZINES TO FILL YOUR VACANT POSITIONS.

Gary Reichert – gary@shieldwallmedia.com – 715-252-6360

PRODUCT GUIDE

Your comprehensive source for products and services in the metal roofing industry

HOW TO USE THIS RESOURCE:

The index below is a guide to help you find companies, suppliers, manufacturers, and associations that provide specific products or services for the metal roofing industry. This index is followed by an alphabetical listing. Many companies have included logos and/or descriptions of their businesses to explain their offerings. Companies that have won the 2020 Metal of Honor Awards are marked with Metals of Honor.

Companies that advertised separately in this issue can be found in our ad index on page 56. As an added convenience, the Buyers' Guide is also available online at www.metalroofingmag.com. The online version contains a more comprehensive list of suppliers for each category.



PRODUCT CATEGORIES

COMPONENTS

CLIPS, STANDING SEAM

Dynamic Fastener
East Coast Fasteners
Leland Industries, Inc.
Logan Stampings
Marco Industries
Metal Panels, Inc.
MWI Components
S-5!
ST Fastening Systems

CLOSURE STRIPS

Direct Metals Inc.
Dynamic Fastener
East Coast Fasteners
Leland Industries, Inc.
Marco Industries
MWI Components

FASTENERS

AceClamp
Atlas Bolt & Screw Co., LLC
BECK America
Day Glow Industrial Co., LTD
Direct Metals Inc.
Dynamic Fastener
East Coast Fasteners
Golden Rule Fasteners
Graber Post Buildings
Leland Industries, Inc.
Maze Nails
ST Fastening Systems
Triangle Fastener Corp.

INSULATION

Direct Metals Inc.
Kennedy Insulation Group
Metal Panels, Inc.
MWI Components
rFoil/Coverttech

ROOF FLASHINGS

Advanced Architectural
Sheet Metal & Supply, Inc.

Atlas Bolt & Screw Co., LLC
Direct Metals Inc.
Dynamic Fastener
Leland Industries, Inc.
MFM Building Products
ST Fastening Systems

SEALANTS, CAULKS, & TAPES

Albion Engineering Company
Atlas Bolt & Screw Co., LLC
Golden Rule Fasteners
GSSI Sealants
Marco Industries
Novagard Solutions, Inc.
Triangle Fastener Corp.

SKYLIGHTS, TRANSLUCENT PANELS, & WINDOWS

ABC Supply Company, Inc.
A.B. Martin Roofing Supply, LLC
Direct Metals Inc.
MWI Components
Palram Americas
Shed Windows and More, Inc.
TUFTEX/Onduline North America

UNDERLAYMENTS

Carlisle WIP Products
CertainTeed
DR!PSTOP
Levi's Building Components
MFM Building Products
RoofTopGuard SA
Titanium Synthetic Underlayment

MOISTURE CONTROL & VENTILATION

AG-CO
Direct Metals Inc
DR!PSTOP
Golden Rule Fasteners
Marco Industries
MFM Building Products
MWI Components
Plyco Corporation
ProfileVent

Snap-Z
ST Fastening Systems

COIL & SHEET DISTRIBUTORS

ALUMINUM

Everlast Metals

GALVANIZED & GALVALUME

Everlast Metals
United Steel Supply

STEEL, COLD-ROLLED & WEATHERING

United Steel Supply

METAL FORMING TOOLS & EQUIPMENT

ASC Machine Tools, Inc.
DR!PSTOP
Hershey's Metal Meister
Malco Products SBC
Roll Former Corporation

BRAKES, SHOP

ASC Machine Tools, Inc.
Hershey's Metal Meister

DECOILERS

Acu-Form
ASC Machine Tools, Inc.
Bradbury Group, The
Marion Manufacturing
Metal Rollforming Systems

FASTENING TOOLS (SCREWDRIVERS, STAPLERS, & NAILGUNS)

BECK America
Malco Products SBC

MACHINE CONTROLS

AMS Controls

Hershey's Metal Meister

PANEL & SHINGLE ROLL FORMERS, FIXED

Acu-Form
ASC Machine Tools, Inc.
Bradbury Group, The
Marion Manufacturing
Metal Rollforming Systems
New Tech Machinery
Samco Machinery

PANEL ROLL FORMERS, PORTABLE

Acu-Form
Bradbury Group, The
New Tech Machinery

PANEL SHEARS

Acu-Form
Bradbury Group, The
Marion Manufacturing

SLITTERS, COIL

Acu-Form
Bradbury Group, The
Hershey's Metal Meister
Marion Manufacturing
Metal Rollforming Systems
SWI Machinery

METAL ROOFING PANELS

BATTEN PANELS

ABC Supply Company, Inc.
Graber Post Buildings
McElroy Metal
Petersen | PAC-CLAD

RIBBED PANELS, THROUGH-FASTENED

A.B. Martin Roofing Supply, LLC
ABC Supply Company, Inc.
Everlast Metals

Everlast Roofing
Fabral
Graber Post Buildings
Hixwood Metal Inc.
McElroy Metal
Metal Panels, Inc.

SHINGLE, SHAKE, & SLATE FACSIMILES

ABC Supply Company, Inc.
CertainTeed
EDCO Products
McElroy Metal

STANDING SEAM, MECHANICALLY SEALED

Everlast Metals
Everlast Roofing
McElroy Metal
Metal Panels, Inc.
Petersen | PAC-CLAD

STANDING SEAM, SNAP-LOCK

A.B. Martin Roofing Supply, LLC
Advanced Architectural
Sheet Metal & Supply, Inc.
Everlast Metals
Everlast Roofing
Graber Post Buildings
McElroy Metal
Metal Panels, Inc.
Petersen | PAC-CLAD

MISCELLANEOUS

LIGHTNING PROTECTION

AceClamp

PHOTOVOLTAIC SYSTEMS & ACCESSORIES

AceClamp
S-5!

MISC. BUILDING PRODUCTS

Extrutech Plastics, Inc.
FlexScreen
FootingPad by AG-CO
Kevmar Garage Doors
Safe-Way Garage Doors

PRIMARY SUPPLIERS

COIL COATERS

United Steel Supply

COIL COATING (PAINT) SYSTEMS

AkzoNobel
Sherwin-Williams Coil Coatings
United Steel Supply

STEEL MILLS & SUPPLIERS

Coated Metals Group
Metal Alliance
United Steel Supply

RAIN, SNOW, & ICE HANDLING & MANAGEMENT

GUTTER HANGERS & FASTENERS

Advanced Architectural
Sheet Metal & Supply, Inc.
Day Glow Industrial Co., LTD
Maze Nails

GUTTERS, DOWNSPOUTS, & DRAINAGE

Advanced Architectural
Sheet Metal & Supply, Inc.
EDCO Products

SNOW GUARDS & ICE PREVENTION

A.B. Martin Roofing Supply, LLC
AceClamp
Advanced Architectural
Sheet Metal & Supply, Inc.
Dynamic Fastener
Marco Industries
RapidMaterials
S-5!
ST Fastening Systems

REROOFING & MAINTENANCE

RETROFIT/RECOATING PRODUCTS

Ames Research Laboratories, Inc.
Dynamic Fastener
EPDM Coatings
Filc USA LLC
Nationwide Protective Coating Mfrs.
Roof Hugger

BUSINESS TOOLS & ASSOCIATIONS

AMS Controls
Hershey's Metal Meister

ASSOCIATIONS

Metal Roofing Alliance

BUSINESS MANAGEMENT TRAINING

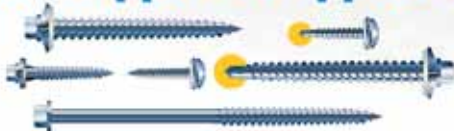
Construction Programs & Results, Inc.

SOFTWARE, ROOF ESTIMATING, & IMAGING

AppliCad USA
SmartBuild Systems

LELAND Specialty Fasteners

Master Grippers® Grippers MDP®



For the post frame building industry
MDP metal panel to wood or light steel girt or purlin.

Master Tappers®



Roof panel to panel - roof sheet to structural A - AB - B points available, type F, type 23, type 1, BP & more. Lengths to 8" available.



AVAILABLE: A325 STRUCTURAL BOLTS

A325 Heavy Hex Structural Bolts assembled and unassembled in our convenient 1/4 Keg Pails. Manufactured in 1/2", 5/8" & 3/4" diameters in lengths from 1-1/4" to 6".

Master Drillers®



Attach metal panel to metal girt or purlin, stitching & structural applications. Lengths to 8" available.

Powder Coating

No FADING • No CHIPPING



Our Powder Coated paint system allows us to match your painted steel supplier's warranty.



1.800.263.3393

www.lelandindustries.com



Made in Canada

092220 126

GREAT IDEAS

ON DESIGN, COMPONENTS AND MATERIALS ARE IN THE IDEA BOOK

The Idea Book profiles more than **25 leading roofing projects**. Each project is presented in depth, explaining the different looks, materials, and components that made it possible. Along with each project is information on the equipment and components that were used such as panels, metal shingles, unpainted metals, underlayment, and fasteners.

You'll find great ideas in The Idea Book. Put it to work for your business.



COMING IN MAY 2021

METAL ROOFING

MAGAZINE

For advertising opportunities:

Gary Reichert: 715-252-6360
gary@shieldwallmedia.com

To submit project features:

Jessica Franchuk: 920-224-5146
jessica@shieldwallmedia.com



FEATURED LISTINGS

We thank these advertisers for their featured listings in the Metal Roofing Buyers' Guide.



Day Glow
www.dayglow.com.TV



www.lelandindustries.com



www.ag-co.com



www.directmetalsinc.com



www.bradburygroup.com



www.roofhugger.com



www.abcsupply.com



www.mfmbp.com



www.plyco.com



Roofing Ventilation & Accessories



www.marcoindustries.com



www.plyco.com



Innovative Roofing Solutions™



www.aceclamp.com



www.advarchsm.com

To view enhanced listings go to www.metalroofingmag.com

COMPANY DIRECTORY



A.B. Martin Roofing Supply, LLC

82 Garden Spot Road
Ephrata, PA 17522
888.606.1094
sales@abmartin.net
www.abmartin.net

We get it. With how busy you are, it's hard to stay on top of lead times and order deadlines. But that doesn't change the fact that your customers are counting on you to deliver a quality finished project on schedule. A.B. Martin is here to help. A.B. Martin stocks and manufactures over 35,000 building products that are ready for immediate shipment when you need it...YESTERDAY! Most of our sales team are former builders who can guide you through challenging client requests with industry expertise. Build with A.B. Martin and you'll get the job done.



ABC Supply Company, Inc.

1 ABC Parkway
Beloit, WI 53511
608.362.7777
jeff.garrow@abcsupply.com
www.abcsupply.com

ABC Supply is the largest wholesale distributor of roofing in the United States and one of the nation's largest distributors of siding, windows, and other select exterior building products.



AceClamp® by PMC Industries, Inc.

87 Spring Lane
Plainville, CT 06062
860.351.0686
info@aceclamp.com
www.aceclamp.com

AceClamp® manufactures fast-installing, precision-



engineered snow retention and solar mounting solutions. We offer unique clamping systems that are compatible with almost any roof type. Our patented non-penetrating "slide-pin" metal roofing clamp eliminates the need for set screws, helping to protect the metal roofing panel's finish from installation damage. Our roofing innovations extend to a wide variety of rail and bar-type snow retention solutions. The Variable Angle Bracket (VAB™) system yields more space on the roof by matching complex angles and contours otherwise impossible for conventional snow retention products. For commercial-duty snow retention applications, try Snow Titan™. Featuring an all-new triangular rail, it's capable of up to 42' spans. Solar Snap™ is an Adaptive Solar Racking System that works on every roof and uses our ever-popular, fully-assembled, non-penetrating clamps. Simply snap-in pre-assembled components along the rail and secure.



Acu-Form

10550 Township Road 262
Millersburg, OH 44654
330.674.4003
acu-form@safecommail.com
www.acuformequipment.com

Acu-Form has been successful in designing and manufacturing machines that consistently provide quality products using D2 tool steel-forming dies, which provide longevity. Most parts are built in-house, giving us superior quality control. Acu-Form machines can be set up to run with electric, hydraulic, or mechanical.



Advanced Architectural Sheet Metal & Supply, Inc

131 West 2nd Street
Shelby, MI 49455
231.861.0050
info@advarchsm.com
www.advarchsm.com

ADVANCED is a family-owned business that continues to be the better solution for commercial roofing and metal building contractors. The dedication and commitment to produce the best products and customer service are top priority. Gutters, downspouts, elbows, offsets, and accessories along with architectural brake



metal are only some of the products available. For more information on our products, please call 231.861.0050 or visit www.advarchsm.com today.



AG-CO

701 West State Street
Saint Johns, MI 48879
paul@ag-co.com
www.ag-co.com

Cupolas by AG-CO are easy to install (only three pieces, including weathervane), low maintenance, and economical. The cupolas come in 13 different top colors, 13 bottom section colors, and 15 different weathervanes. With thousands of combinations, your customers are sure to get a unique and attractive addition to their building!



AkzoNobel

1313 Windsor Avenue
Columbus, OH 43211
800.294.3361
holly.gubics@akzonobel.com
www.akzonobel.com

AkzoNobel has a passion for paint. We're experts in the proud craft of making paints and coatings.



AMS Controls

12180 Prichard Farm Road
Maryland Heights, MO 63043
314.344.3144
sales@amscontrols.com
www.amscontrols.com

AMS Controls is an industry leader in roll-forming control systems, folding machine control systems, and office-to-floor production management software. Our experts can help you find the best solution for your application, which will make your operations more profitable, less wasteful, and safer. Our controls are easy to use for minimal operator training. Our experts are on hand to explain our controls and answer questions about your roll-forming applications.





AppliCad USA, Inc.

1685 West Broadway Street
Oviedo, FL 33469
541.748.0545
enquiries@applicad.com
www.applicad.com

AppliCad software is the world's best-selling software for metal roof estimating. Model the roof in 3D because it provides verifiable accuracy of your estimates.



ASC Machine Tools, Inc.

900 North Fancher Road
Spokane, WA 99212
509.534.6600 ext. 273
509.536.7658
tschwarzer@ascmt.com
www.ascmt.com

ASC has manufactured premium quality coil handling and roll-forming equipment since 1949. Our lines produce: panel, trim, CZ purlin, garage doors, and more!



Atlas Bolt & Screw Co., LLC

1628 Troy Road
Ashland, OH 44805
info@atlasfasteners.com
www.atlasfasteners.com

Atlas Bolt & Screw, the industry leader, has the widest selection of metal wood fasteners, closures, venting, sealing, flashing, and exterior building performance solutions. Headquartered in Ashland, Ohio, with manufacturing and distribution located in Ohio, Texas, Oregon, and North Carolina. "We make the complex simple and the difficult easy."



BECK America

105 Industrial Drive
Muscle Shoals, AL 35661
800.239.8665
info@beck-america.com
www.beck-america.com



BECK America is the Master Distributor for products manufactured by The BECK Group, a leader for generations in pneumatic tool and fastener development and creator of the SCRAIL® Roofloc® Metal Roofing System.



Beckers Specialty Corp.

2526 Delta Lane
Elk Grove Village, IL 60007
847.766.3555
847.766.3595 (fax)
info-beckersspecialty@beckers-group.com
www.beckers-group.com

As a leading worldwide supplier of coil coatings, the Beckers Group has an international organization that ensures global coordination and consistent product standards. Known for setting industry standards for high performance, Beckers products are in use all over the world. Sustainability, design, and innovation are an integral part of its long history spanning 150 years.



THE BRADBURY GROUP

Bradbury Group, The

1200 East Cole Street
Moundridge, KS 67107
620.345.6394
bradbury@bradburygroup.com
www.bradburygroup.com



The Bradbury Group offers quality roll-forming equipment to manufacturers with different manufacturing needs and production levels. Machines can be designed for startup companies, mid-size production companies, and the highest volume level manufacturers that often need more throughput and automation. Bradbury Metal Tile Roofing Solutions (BMTRS) is providing the North American market with a range of options that enable customers to manufacture and sell their own tile designs in a market that offers lucrative growth opportunities. BMTRS specializes in designing and building customized manufacturing equipment for unique metal tile design and production requirements.



CertainTeed

20 Moores Road
Malvern, PA 19355
800.233.8990

www.certainteed.com/metal-roofing
CertainTeed Roofing is a leading manufacturer of roofing products and systems. CertainTeed's Matterhorn Metal Roofing line features three distinct aesthetic profiles (Shake, Slate, and Tile) that expertly replicate the design of classic roofing in the form of tough, lightweight steel panels that are ideal for residential and light commercial applications.



Construction Programs & Results, Inc.

2818 Northeast 292nd Avenue
Camas, WA 98607
360.335.1100
info@markupandprofit.com
www.markupandprofit.com

Since 1999, we've helped thousands of general contractors, builders, remodelers, and specialty contractors build stronger, more profitable businesses.



Construction Rollforming Show

525 Elm St.
Cincinnati, OH 45202
715.252.6360 (Gary)
gary@shieldwallmedia.com
sharon@shieldwallmedia.com
www.constructionmagnet.com/construction-rollforming-registration

Join us for the second annual show to be held June 3-4, 2021, Duke Energy Convention Center, Cincinnati, Ohio. Presented by *Rollforming Magazine*, this show is the only show exclusively devoted to the construction roll-forming industry. The show offers the latest in machines and best business practices for the professional.





Covertech—rFoil Insulation

279 Humberline Drive
Etobicoke, ON M9W 5T6, Canada
416.798.1340
416.798.1342 (fax)
johnstarr@covertechfab.com
www.rfoil.com

rFoil is a single or double layer of polyethylene bubbles bonded to and sandwiched between a highly reflective surface and a white polyethylene sheet. It is ideal for many residential and commercial applications including walls, ceilings, and roofs. Adding rfoil to your construction project improves the insulation value and significantly increases its energy efficiency.



Day Glow Industrial Co., LTD

98 Shunfan North Road,
Dajia District, Taichung City, Taiwan
437101

886.4.268.14303
dayglow@dayglow.com.tw
www.dayglow.com.tw

Day Glow is a specialist maker of Drilling and Tapping screws, since 1996. Located in Taichung, Taiwan. Day Glow has several years' experience in metal building construction, hence realizing the importance of screws. We focus on producing high quality fasteners. Besides standard screws, we also provide customized screw production.



Direct Metals Inc.

1719 Baseline Court
Fort Myers, FL 33905
855.800.8878
513.703.2626
orders@directmetalsinc.com
www.directmetalsinc.com

DMI supplies metal roofing fasteners and building components to the post-frame, steel-frame, commercial, and residential metal roofing industries. Adding value to a building project is of utmost importance. DIRECT*SEAL ZXL and ZAC zinc-aluminum alloy head fasteners and SCAMP 304 SS capped metal to wood and metal to metal screws provide lifetime protection for metal roofs. Fastener threads coated with DMG85 provide corrosion resistance below the roof. DMI has developed a product line of Dade County listed Pancake and Wafer head carbon steel and 304 SS screws and panel clips for standing seam metal roofs. It supplies solid foam closure strips and vented foam RAZORBACK rolls for ventilation that are Florida Building Code approved. For shingle roofs, DMI has helped develop the BULLET BOOT pipe flashing. Available in seven colors, this EPDM flashing has a 35-year warranty and is Florida Building Code approved.



BUILDING CONNECTIONS



East Coast Fasteners produces durable, long lasting fasteners for all combinations of building materials.

- Quick Ship Program
- Extended Warranties
- Colors to match any rollformed steel
- High quality products for any application

East Coast Fasteners...**Building Connections** for the construction industry.



800.558.5895 • www.plyco.com

The FASTEST, SHARPEST, CLEANEST Drilling Fasteners Available!!

Ply-Lo Extended • Ply-Lo Extreme • Ply-Lo Driller • Ply-Fast • Metalfast
Stainless Steel • Ply-Lo Low Profile • Flashers • Closures • Wood Deck



Dura Coat

PRODUCTS
An Axalta Coating Systems Company

Dura Coat Products, Inc.

5361 Via Ricardo
Riverside, CA 92509
951.341.6500
951.341.6505 (fax)

info@duracoatproducts.com
www.duracoatproducts.com

Dura Coat Products offers two high-performance coil coatings. Durapon 70™ is a PVDF formulation with exceptional durability and fade resistance that is also available with thick film primer for the tougher environments. Ceranamel™ XT-40 SMP is a proprietary polymer that is harder, yet more flexible than ordinary coatings. Both are Energy Star compliant. Hydropon is a new air-dry, field-applied, water-base PVDF for recoating old metal roofs and siding.

DYNAMIC FASTENER

Dynamic Fastener

9911 East 53rd Street
Kansas City, MO 64133
800.821.5448

kenwebb@
dynamicfastener.com
www.dynamicfastener.com

Offers same-day shipping of screws, anchors, flashings, safety equipment, hand tools, and power tools, in-house painting of screws and rivets, with one- or two-day lead times. Dyna-Guard snow retention system for metal roofs. Dyna-Clamps are available to accommodate many profiles of standing seam roofs. The company's free 140-page, full color tool and fastener hand guide provides engineering data and also details product offerings.



East Coast

FASTENERS & CLOSURES, INC.

East Coast Fasteners

P.O. Box Q
Elkhart Lake, WI 53020
800.558.5895

tgranitz@plyco.com
www.plyco.com/building-components/east-coast-fasteners

East Coast supplies a variety of Long Life, Fast Drilling construction fasteners that meet your building needs, backed by quick shipping programs to serve our customers. We stand behind our products, we don't just talk about them.



EDCO

EDCO Products, Inc.

8700 Excelsior Boulevard
Hopkins, MN 55343
952.945.2680

sales@edcoproducts.com
www.edcoproducts.com

EDCO's award-winning steel roofing offers timeless beauty and an unmatched quality. Our products are backed with a lifetime, non-prorated warranty.



ENGLERT

Englert Inc.

1200 Amboy Avenue
Perth Amboy, NJ 08861
800.364.5378

732.826.8865 (fax)
info@englertinc.com
www.englertinc.com

For over 50 years, Englert has been providing high-quality metal roofing, wall panels, and gutter systems painted on our own state-of-the-art coil coating line. We also brought manufacturing to the job site with a wide selection of portable roll-forming machines.



EPDM

coatings

EPDM Coatings

494 Bridgeport Avenue, Suite 101-342
Shelton, CT 06484
610.298.1989

702.977.2936 (fax)
info@epdmcoatings.com
www.epdmcoatings.com

Fix roof leaks once with Liquid Rubber, the only liquid EPDM in the world. It provides a new roof at a fraction of the cost. With a 25-year history of success, this one-coat application has been proven in laboratory testing to last three times longer

WITHSTAND THE MOST OUTSTANDING SNOWSTORMS

Commercial-grade snow retention for extreme snow loads and up to 42" seams

TO ORDER:
860-773-4144
www.AceClamp.com

patent pending
SNOW TITAN
Your Rooftop Warrior
by ACECLAMP

than elastomers. Save time and money with a do-it-yourself application. Takes submerged water 365 days a year. Don't forget to ask about volume discounts! EPDM coating was previously awarded Top 10 Product honors by *Metal Roofing Magazine*.

Everlast Metals

Everlast Metals

10 Enterprise Court
Lebanon, PA 17042
800.418.5057

www.everlastmetals.com

Everlast Metals offers architectural metal roofing and wall panel systems, available in 24-gauge steel and aluminum. Everlast Metals offers an extensive color selection of slit coil and flat sheet. Strategically located throughout the New England, Mid-Atlantic, and Midwestern states, Everlast Metals can serve your every need.

FABRAL

METAL WALL AND ROOF SYSTEMS

Fabral

30 Technology Parkway South,
Suite 400
Norcross, GA 30092
800.477.2741



info@fabral.com
www.fabral.com

Fabral is the premier supplier of metal roofing and siding and manufactures one of the most extensive product lines available for post-frame, agricultural, residential, architectural, commercial, and industrial applications. Fabral's total system offering includes a wide selection of standing seam roof profiles and both exposed fastener and concealed fastener panels—available in a variety of substrates, gauges, and colors, and accessories, including CondenStop, underlayment, snow retention, and copper accents.



File USA—makers of DRIPSTOP

10118 Settlement House Road
Dayton, OH 45458
937.660.6646
939.999.3927

info@dripstop.com
www.dripstop.com

For over 25 years, DRIPSTOP has been the absolute best way of dealing with condensation on non-insulated metal roofs. It has been tried and tested in every climate condition across the globe and has proven to be a



simpler and more economical way. The membrane will absorb water caused by condensation, preventing dripping from the roof. DRIPSTOP serves as an added layer of protection in corrosive environments while also improving inside and outside acoustic properties. Both impact and echo noises are reduced significantly. For homeowners, STEEL SHIELD is designed specifically to protect metal panels installed directly on shingles against the abrasion caused by expansion and contraction due to temperature changes. Both DRIPSTOP and STEEL SHIELD are factory applied during the panel production process and show up on the job site already installed on the panels. Saves Time and Money! Ask for both products from your preferred panel provider.

FRAMEBUILDING

Frame Building News

P.O. Box 255
lola, WI 54945
www.constructionmagnet.com
jessica@shieldwallmedia.com

Frame Building News has been devoted exclusively to coverage of the post-frame construction industry for the past 30 years. It has more than 19,000 subscribers, most of which make their living in the post-frame industry. It is published five times a year.



ULTRA WHITE MBI

METAL BUILDING INSULATION

(2600 Series)



- Blocks 96% of Radiant Heat Transfer
- Prevents Interior Condensation
- Class 1 / Class A Fire-Rated (ASTM E84-09 / ASTM E2599-08)
- Puncture and Tear-Resistant
- Unaffected by Humidity
- Will not Promote Mold and Mildew
- Safe, Non-Toxic and Non-Carcinogenic
- Easy to Handle and Install
- UV-Resistant

The rFOIL-2600 is the first reflective bubble insulation to come with an unmatched 10 Year Guarantee against ultraviolet light degradation, delamination, cracking, peeling or flaking.

The guarantee includes new material and up to \$0.75 / sqft for any labor replacement costs.



Call Toll Free: 1-800-837-8961 or 416-798-1340
Email: sales@foil.com Website: www.foil.com

Patented Product

**GARAGE • SHED • CARPORT
BUILDER**

Garage, Shed & Carport Builder Magazine

P.O. Box 255

Iola, WI 54945

karen@shieldwallmedia.com

www.constructionmagnet.com/

subscribe

Garage, Shed & Carport Builder Magazine is the new industry resource for ideas, information, and best practices for the manufacturers and contractors who build Garages, Sheds, and Carports. This is the only industry publication focused exclusively on this unique segment of residential construction.



**GARAGE • SHED • CARPORT
BUILDER
SHOW**

Garage, Shed & Carport Builder Show

120 Doctor M.L.K. Jr. Boulevard

South Bend, IN 46601

715.252.6360 (Gary)

gary@shieldwallmedia.com

www.constructionmagnet.com/garage-

carport-shed-builder-show-home-page

The Garage, Shed & Carport Builder Show takes place Feb. 4-5, 2021 at the Century Center in South Bend, Indiana. This new show is all about small buildings and additions. Whether an add-on or a freestanding building, small buildings face unique design challenges. If you are looking for products catering to this niche or best practices, you should be in South Bend for the show. The show hotel is the DoubleTree by Hilton South Bend and the rate is \$99 per night! Conveniently, it is just 10 minutes from



the South Bend International Airport (complimentary shuttle service is available) and is connected to the Century Center.



Graber Post Buildings

7716 North 900 East

Montgomery, IN 47558

800.264.5013

info@graberpost.com

www.graberpost.com

A leading company in the post-frame industry for roll-formed metal, custom trusses, and metal roofing. Graber manufactures and distributes numerous components for post-frame structures. It is a complete, post-frame building package company, a "One-Stop Shop."



Hershey's Metal Meister, LLC

420 Progress Drive

Mattoon, IL 61938

877.289.3030

info@hersheysmm.com



Discover the advantages of the Variobend USA folding machine! A unique hybrid of European design and American manufacturing; get the best of both worlds! Need parts? No need to look beyond the massive parts inventory at Hershey's! Call today to see how we can help you succeed!



Hixwood Metal Inc.

N14685 Copenhaver Avenue

Stanley, WI 54768

715.644.0765

sales@hixwoodmetal.com

www.hixwoodmetalinc.com

Hixwood Metal Inc. is the premier source for all your coil, blank flat stock, and slit coil needs. We specialize in supplying the industry with products that are at the top of the spectrum. Our 28-gauge .0157 coil with the BeckryTech H.D.P.E. paint system is the most popular. Available in textured or smooth colors. Call us for all your 29-, 26-, and 24-gauge needs also.



Leland Industries, Inc.

95 Commander Boulevard

Toronto, ON M1S 3S9, Canada

800.263.3393



**DON'T
REPLACE!
DON'T
RE-ROOF!**

PERMAKOTE

**YOUR
ROOF!**

AN INNOVATIVE WATERPROOFING & INSULATING ROOFING SYSTEM

15 YEAR LIMITED WARRANTY

WATERPROOFING • SOUNDPROOFING • INSULATING • BEAUTIFYING • PROTECTING

CALL FOR A FREE PRODUCT CATALOG • ASK ABOUT OUR CUSTOM PRIVATE LABELING PROGRAM

NATIONWIDE PROTECTIVE COATING MFRS., INC.

1.800.423.7264 941.753.7500

WWW.ROOFCOATINGS.NET

- Effectively Seals & Prevents Most Leaks
- Space Age Ceramic Insulation
- Saves Up to 40% on Energy Costs
- Environmentally Safe

Partner Since 1999

Member Since 1997

bnelson@lelandindustries.com
www.lelandindustries.com

A domestic manufacturer for the metal roofing and cladding industry. Leland produces a complete line of screws for metal to metal and metal to wood frame structures. Lengths to 8" are available and all fasteners are plated with Leland's exclusive JS1000. Powder coating is available in colors to match any panel color.



Levi's Building Components

137 Newport Road
Leola, PA 17540
877.897.7020
717.656.2558 (fax)
sales@levisbuildingcomponents.com
www.levisbuildingcomponents.com
Known for quality products, quick shipping, and expertly filled orders, Levi's Building Components is a wholesale supplier and one-stop for all your metal roofing needs including snow guards, fasteners, and a multitude of accessories. Check out our extensive line of fasteners, including Fastgrip, Metalgrip, ProCap, and ProZ, and our variety of snow retention guards in our Snow Defender line available in 40-plus color offerings. Levi's can help you complete your building project on time with quality, long-lasting components.



Roofing Ventilation & Accessories

Marco Industries

4150 S. 100th E. Avenue, Suite 301
Tulsa, OK 74146
800.800.8590
info@marcoindustries.com
www.marcoindustries.com



We make the best roofing ventilation and accessories for metal roofs—period! With the most tested and certified products on the market, you can trust our solutions to perform in even the harshest conditions, protecting your roof and everything underneath. Only Marco offers the Weather-Tite System, a comprehensive line of metal roofing solutions that offers easy installation, remarkable building ventilation, lower utility costs, extreme durability, and outstanding warranties. If it's not proven, it's not Marco.



Marion Manufacturing

201 South Coble Street
Marion, KS 66861
620.382.3751
kkukuk@marionmanufacturing.com
www.marionmanufacturing.com
Marion Manufacturing adds the value to the metal. Contact us for all your roll-forming needs.



Maze Nails

P.O. Box 449
Peru, IL 61354
800.435.5949
lisa@mazenails.com
www.mazenails.com



In business since 1848, Maze Nails has been helping build America for over 170 years. From start to finish, you can be assured the mission of the Maze Nail mill is to provide top quality nails. Maze offers an entire line of post-frame nails for metal roofs and framing. Our full line of specialty nails also includes stainless steel, copper, and aluminum nails in addition to our Hot-Dipped Galvanized nails. We are currently manufacturing plastic sheet collation, wire weld, and plastic stick collated nails to fit all the major manufacturers' pneumatic guns. Trust the leader in Specialty Nails—Maze Nails! 100% Made in the USA.

Your Trim Shop Suite

Transform your coils into satisfied customers!



Variobend USA double folder



Variobend USA single folder



NEW! Slinet,
The next generation in coil processing.



INFO@HERSHEYSMM.COM
TOLL FREE: (877) 289-3030
420 PROGRESS DR MATTOON, IL 61938



Speed. Accuracy. Service.

Don't just bend trim- Variobend it! Call today!



McElroy Metal

1500 Hamilton Road
Bossier City, LA 71111
800.562.3576
info@mcelroymetal.com

McElroy Metal markets metal roofing, siding, and substructural products.



Metal Alliance

2120 Southwest Poma Drive
Palm City, FL 34990
844.638.2548
orders@metalalliance.com
www.metalalliance.com

Metal Alliance is a premier supplier of quality prime grade metal coil and flats for the architectural metal product industry. Our deep relationships with mills around the world and logistical know-how allow us to deliver superior metals on budget and on time, regardless of order size. With over 50 in-stock colors and warranties up to 50 years, we're the metal partner you can count on. Metal Alliance is also the Exclusive Provider of DuPont™ Tedlar® PVF Film for metal roof and wall panels.

Tedlar® is a registered trademark of affiliates of DuPont de Nemours, Inc. and is used under license by Titan Steel Corporation and its affiliates.



Metal Panels, Inc.

131 S. 147th E. Avenue
Tulsa, OK 74116
918.641.0641
913.766.7200
contact@metalpanelsinc.com
www.metalpanelsinc.com

Metal Panels Inc. provides quality manufactured metal roofing and siding products for the metal roofing, metal building, and post-frame industries.



Metal Rollforming Systems

4511 North Freya Street
P.O. Box 6246
Spokane, WA 99217
833.284.6794
bill@mrsrollform.com
www.mrsrollform.com

Metal Rollforming Systems (MRS) manufactures and sells the highest quality American-made roll-forming equipment and accessories available at prices that cannot be beat. With 26 years in business and more than 50 different product lines, including panel roll formers, trim roll formers, slitters, upenders, profiled shears, and more. MRS has the equipment, knowledge, and support to help you and your business be successful.



Metal Roofing Alliance (MRA)

P.O. Box 2799
Longview, WA 98632
410.534.6900
www.metalroofing.com

The MRA is focused on educating consumers and increasing homeowner awareness of the advantages of quality metal roofing.



MFM Building Products

525 Orange Street
Coshocton, OH 43812
740.622.2645
info@mfmbp.com
www.mfmbp.com

MFM Building Products manufactures a number of self-adhering roofing underlayments designed for use under metal roofing systems where high heat is generated. MFM also produces Peel & Seal, which can be used for metal roof repair, seam sealing, and general waterproofing. All of our products are manufactured in the U.S. and are backed by MFM's 60-year history in the industry. Free samples are available by visiting www.mfmbp.com.



Midwest Enterprises

P.O. Box 189
Saint Clair, MO 63077
800.748.7736
636.629.3177 (fax)
sales@e-zgutter.com
www.e-zgutter.com

Midwest Enterprises offers the hardest working guards in the business, with an innovative design for every type of gutter and debris load. Midwest Enterprises manufactures a wide variety of painted, brushed aluminum, powder coated, and copper gutter guard protection products and sells them nationally through a wide network of distributors. E-Z Gutter Guard Protection products are engineered for higher performance under heavy rain and wind, with special channels and bends engineered-in to add strength, help water drop through faster, and help keep the guards tightly in place.



MWI Components

1015 32nd Avenue West
Spencer, IA 51301
800.360.6467
info@mwicomponents.com
www.mwicomponents.com

MWI Components: leading manufacturer/supplier of products for the post-frame industry with cost-competitive, quality products, shortest lead-time, and best customer service.



Nationwide Protective Coating Mfrs., Inc.

7106 24th Court East
Sarasota, FL 34243
800.423.7264
941.753.1773 (fax)
info@natcoat.net
www.nationwidecoatings.com

Nationwide Protective Coating Mfrs., a leader in the elastomeric ceramic paints and coatings industry, has had a long standing commitment to "Green"

products. We manufacturer over 100 ecofriendly, water-borne roof, wall, and floor paints and coatings right here in the U.S. and ship worldwide. We have everything you need to get your project done!



New Tech Machinery

16265 East 33rd Drive,
Suite 40
Aurora, CO 80011
800.574.1717
info@newtechmachinery.com



New Tech Machinery manufactures the world's finest portable roof panel and gutter machines. We offer high-quality equipment and unmatched customer service.

Novagard

5109 Hamilton Avenue
Cleveland, OH 44114
800.380.0138
216.881.8111
products@novagard.com



Novagard provides metal roof silicone sealant products for construction professionals. ISO 9001:2015 and IATF 16949:2016 (both QMS with Design); WBE & WOSB.



Onduline North America/Tuftex

4900 Ondura Lane
Fredericksburg, VA 22407
540.898.7000
info@onduline-usa.com

us.onduline.com/pro
Available direct from the manufacturer, TUFTEX brand polycarbonate and PVC panels offer a variety of solutions for your garage, shed, carport, or other home projects. TUFTEX is made in the U.S. by Onduline North America. Polycarbonate panels are backed by a 10-year warranty. All panels are lightweight, easy to install, and also available in 9" OC Ag Panel and 12" OC R Panel profiles (38" wide, 36" of coverage, and lengths from 2½' to 24'). Distribution opportunities available. Contact our U.S.-based customer service team for more information at 540.898.7000.



Paragon Computing Solutions, LLC

1069 Red Run Road
Stevens, PA 17578
866.971.0940
sales@goparagon.com
www.goparagon.com
Paragon Computing Solutions helps building supply companies break from disjointed systems by delivering streamlined software that increases your output.



Petersen Aluminum | PAC-CLAD

1005 Tonne Road
Elk Grove Village, IL
60007
800.722.2523
info@pac-clad.com
www.pac-clad.com



Petersen, a Carlisle company, manufactures PAC-CLAD metal cladding products in multiple gauges of steel and aluminum, including standing seam roof panels, hidden- and exposed-fastener wall panels, soffit panels, perforated metal, coil and flat sheet, fascia, coping, and composite panels. All are available in 70% PVDF finish in 45 standard colors.



Plyco Corporation

P.O. Box 386
500 Industrial Drive
Elkhart Lake, WI 53020
800.558.5895
tgranitz@plyco.com
www.plyco.com
Since 1951, Plyco has been a leading supplier of products to the post-frame, metal-frame, and commercial construction industries. Plyco manufactures a full line of products including metal walk doors, windows, horse stall systems, ventilation products, fasteners, and closures. For many builders, Plyco provides one-stop shopping for their building component needs.



Prassas Metal Products, Inc.

1411 West 190th Street, Suite 360
Gardena, CA 90248
800.294.3427
310.217.4533
310.217.4530 (fax)
pmpsteel@yahoo.com
www.pmpsteel.com
Prassas Metal Products, Inc. (PMP Steel) is a 30-year-old steel trading and coated coil distributor specializing in pre-painted and acrylic Galvalume coil. PMP Steel supplies coated coil to a wide variety of industry applications, such as residential roofing, metal buildings, carports, roll-up, and residential garage doors. We stock a full line of industry-standard colors for ValsparXL, Akzo1050, and a 40-year "Cool" SMP system. For shed, garage, and carport manufacturers, we stock 21 colors of 29-gauge Regular Polyester PPGL coil, along with a full range of Acrylic Galvalume coil thicknesses (22- to 29-gauge) and widths. Coil processing is available.



Raytec Manufacturing

544 Gristmill Road
Ephrata, PA 17522
877.800.2500
717.445.0511 (fax)
sales@raytecllc.com
www.raytecllc.com

Raytec has been serving the rain gutter industry since 1956. Manufacturers of Hangtite and Hangfast hidden gutter hangers, the company is committed to exceeding your quality and customer service expectations. East Coast, Midwest, and Northwest warehouses ensure fast deliveries. Most orders ship in 24 hours.



Roll Former Corporation

140 Independence Lane
Chalfont, PA 18914
215.997.2511
215.997.5544 (fax)
info@rollformercorp.com
www.rollformercorp.com
Roll Former Corporation offers the most productive and cost effective roll-forming equipment for the metal roofing and architectural sheet metal industries. Since 1978, we have been leading the industry with our innovation and service.

Rollforming Magazine[®]

Rollforming Magazine

P.O. Box 255
Iola, WI 54945
715.252.6360 (Gary)
gary@shieldwallmedia.com
www.constructionmagnet.com



Rollforming Magazine launched in Fall 2018 to provide professional users of construction roll-forming equipment access to information about the industry: best practices, safety, technical information, available products, and more. Originally a quarterly magazine, in 2021, it will publish six times annually.



Roof Hugger, LLC

142 Whitaker Road
Lutz, FL 33549
800.771.1711
sales@roofhugger.com
www.roofhugger.com



Roof Hugger, founded in 1991, has provided nearly 100 million S.F. of retrofit framing systems for metal roofs of all types, throughout the U.S., Canada, Guam, the Caribbean and beyond. Roof Huggers are 10' long, high strength, structurally correct, 16-gauge, 0.060" min., G-90, 50 KSI, "Z-shape" sub-purlins, specifically notched to let the ribs of any existing metal panel pass through the vertical leg of the "Z." This unique, highly tested retrofit system allows any new metal roof to be installed over an existing metal roof without its removal, saving time and money and allowing for wind load, snow load, and thermal upgrading of the existing building.



Roofing Elements Magazine

P.O. Box 255
Iola, WI 54945
715.252.6360 (Gary)
gary@shieldwallmedia.com
www.constructionmagnet.com



COMING THIS WINTER – Roofing Elements Magazine! The magazine will deal with the physical environment and how "elements" like heat, moisture, wind, and sun affect roofing. The elements need to be considered in every aspect from material choice and design to installation techniques. *Roofing Elements* is going to provide both industry white papers and institutional knowledge from the experts who learned their trade in the real world. We are finalizing the publication dates and editorial schedules for our newest addition.



RooftopGuard SA

805 West 5th Street, Unit 10A
Landsdale, PA 19446
267.263.2308
267.263.2389 (fax)
sal@uspnderlayment.com
www.uspnderlayment.com
RooftopGuard SA™ Ice & Water Protector is our premier self-adhering, synthetic-based, high-temperature roofing underlayment. At 59" wide, you get quicker coverage; a 20°F to 260°F service range; a 5" selvage edge (ideal for valleys); for use under all roofing claddings, yet weighing only 56 lbs.

Rural Builder

Rural Builder

P.O. Box 255
Iola, WI 54945
715.252.6360 (Gary)
www.constructionmagnet.com



Rural Builder provides the news, features, products, and how-tos geared toward builders of primarily low-rise agricultural, small retail, municipal, and residential structures. Published eight times annually, *Rural Builder* serves a horizontal market targeting all types of low-rise construction in cities of 250,000 or less population.



S-5! Attachment Solutions

8750 Walker Road
Colorado Springs, CO 80908
info@s-5.com
www.s-5.com



S-5! zero-penetration clamps attach ancillary items to standing seam metal roofs without violating the integrity of the roof or the roof's warranties. The patented clamps mount snow-retention and wind-performance systems, solar arrays, signs/banners, light fixtures, gas piping, stack/flue bracing, walkways, HVAC, lightning protection, equipment screens, conduit, condensate lines, and more.



Samco Machinery

351 Passmore Avenue
Toronto, ON M1V 3N8, Canada
416.285.0619
info@samco-machinery.com
www.samco-machinery.com
Samco Machinery, an ISO 9001-certified company, specializes in roof panel, roof tile, and roof deck roll-forming lines. Our solutions also place special emphasis on innovative and complete material handling systems.



Sherwin-Williams Coil Coatings

1101 South 3rd Street
Minneapolis, MN 55415
888.306.2645
coilhelp@sherwin.com
www.sherwin.com
Sherwin-Williams Coil Coatings (formerly Valspar) has been a leader in the art and science of coatings that excel in both beauty and function. Our expansive range of superior coatings comes to life through a full palette of colors and textures to meet the most demanding environmental requirements, conditions, and designs.



Snap-Z, Glick Metals LLC

330 Swamp Road
Morgantown, PA 19543
717.572.0910
888.696.4457 (fax)
info@standingseamroofvent.com
www.standingseamroofvent.com

Most standing seam ridge vents are too complicated to install, wasting valuable time and energy. With SNAP-Z, installation is easy, and you can relax knowing that it won't fail over the lifetime of the roof and will vent adequately, which in turn gives you satisfied customers and no callbacks. Always working to improve, SNAP-Z has undergone rigorous testing by independent labs to ensure that their standing seam ridge vent will withstand the worst elements and maintain the beautiful hidden fastener look that everyone wants.



ST Fastening Systems

6357 Reynolds Road
Tyler, TX 75708
randy.floyd@hillmangroup.com
www.stfasteningsystems.com



ST Fastening Systems manufactures steel-frame and post-frame fasteners for agricultural, industrial, commercial, and residential metal roof and sidewall applications. Product strengths are drill point quality and corrosion resistance, as shown by the WOODBINDER MB drill point and ZXL zinc-aluminum alloy molded head. Both are enhanced by a powder coating paint system. Solid and vented closure strip systems, pipe flashings, and other accessories round out the product line.

TITANIUM®

SYNTHETIC ROOFING UNDERLAYMENT

Titanium Synthetic Roof Underlayment

1 Owens Corning Parkway
Toledo, OH 43659
419.248.7984
info@owenscorning.com
www.choosetitanium.com

Titanium Synthetic Underlayment: the premium choice for protection that lasts. Contractors



trust Titanium for roofing projects that demand performance. Sure-Foot Technology creates a safer nodular walking surface that resists tearing and keeps working to help prevent moisture damage and cracking under tough conditions. Choose one of the most preferred premium synthetic underlayment brands—and the ideal choice for asphalt and metal roofing systems.



Triangle Fastener Corp.

1925 Preble Avenue
Pittsburgh, PA 15233
800.486.1832
216.299.6495
sales@trianglefastener.com
www.trianglefastener.com



Triangle Fastener Corporation (TFC) is a leading supplier of standard and specialty fasteners, tools, sealants, and accessories for the commercial construction industry. A complete line of fasteners for metal-to-metal, metal-to-wood, drywall, and concrete anchoring is available from each of its 23 locations. TFC has eight in-house painting facilities that custom color-match fasteners to exact requirements with delivery in three days or less. TFC offers job site and technical assistance, inventory management programs, and product development. Our new PANEL-TITE® with the patent-pending BURR-BUSTER® point is engineered to reduce burrs and provide more resistance to back-out! TFC market-specific catalogs can be found on the company's website and are complete with products and technical information on a wide variety of fastening systems solutions. Visit our website to learn more.



United Steel Supply

248 Addie Roy Road, Suite C200
Austin, TX 78746
512.263.0954
will@unitedsteelsupply.com
unitedsteelsupply.com



United Steel Supply furnishes Galvalume, galvanized, and pre-painted steel coil for metal roofing and siding applications to the agricultural, commercial, industrial, and residential markets, both domestically and for export.



Ventco

115 Lismore Avenue
Glenside, PA 19038
800.300.9515
215.887.7975 (fax)
customerservice@ventcoinc.com
www.profilevent.com



The Revolutionary Ventilation System for Commercial and Residential Metal Roofs. Built on proven technology since 1998, our specially designed equipment precisely cuts the panel profile into the surface. Working at optimum performance within varied roof pitches from 2:12 to 20:12, ProfileVent is custom cut to fit the individual panel profile. ProfileVent's compatibility with a steep roof pitch makes it uniquely suitable for these applications, without sacrificing ventilation performance. Maintain the ridge line appearance without the need to raise the ridge cap to accommodate the vent.

DID YOU KNOW?

It costs less to buy a Business Card ad than it does to have cards printed. We even give your "cards" to more than 40,000 potential customers.



**Actual Card Size
(3.5" x 2")**

**FOR MORE INFO CONTACT GARY REICHERT:
gary@shieldwallmedia.com 715-252-6360**





Your Vote Counts!

TAKE A MINUTE TO SUBMIT YOUR VOTE TODAY.

Help decide the Top 10 Products of 2020! Below is a list of products for the metal roofing industry displayed in the pages of *Metal Roofing Magazine* throughout 2020. Let us know which ones you liked the most. We'll announce the winners in the February/March 2021 issue. You can also find an interactive form online at <https://bit.ly/2ITxlgB>

- A. B. Martin Roofing Supply** - metal roofing panels and accessories
- AceClamp** - solar racking solution & snow retention system
- Acu-Form** - panel and trim roll formers
- AG-CO** - easy-install cupolas
- Ames Research** - Blue Max waterproof coating
- ASC Machine Tools** - Alpha Series panel roll-forming line
- Boral Steel** - stone-coated metal shingles
- The Bradbury Group** - roll formers & shears
- Building Products Development** - roof clips
- CertainTeed** - metal shingles and underlayments
- County Line Concepts** - Ridge Line precise cutting tool
- Covertch rFOIL** - underlayment and metal building insulation
- DECRA Roofing Systems** - Villa Tile metal shingles
- Direct Metals** - metal roofing panels & translucent skylights
- Dr!pStop** - condensation control
- Drexel Metals** - 175S Snap Lock metal roofing panels
- Dynamic Fastener** - fasteners, sealants, and snow guards
- E-Z Gutter Guard** - E-Z-Hydroclean gutter protection
- East Coast Fastener** - Ply-Lo series of fasteners
- EDCO Products** - shake-and slate-look metal shingles
- Englert Inc.** - MetalMan gutter machine & rollformers
- Everlast Metals** - concealed fastener metal wall panels & standing seam metal roofing panels
- The Garland Company** - metal edge system & standing seam panels
- Graber Post Buildings Inc.** - standing seam metal roofing panels
- GSSI Sealants** - Premier Butyl Sealant Tapes
- GutterSupply.com** - Metal Roof Panel Machines
- Hershey's Metal Meister, LLC** - Variobend USA folding machines
- Isaiah Industries** - Country Manor Shake aluminum roofing
- John Stortz & Son, Inc.** - AccuSeamer
- Kennedy Insulation** - VerSola Insulation
- Leland Industries** - Mini Drill Point roofing and siding screws
- Levi's Building Components** - ridge vents, underlayment, and snow retention
- Malco Tools** - tools for metal roofing contractors
- Marco Industries** - YetiGuard snow and ice management
- Metal Rollforming Systems** - double-deck roll former
- MFM Building Products** - premium underlayment
- MWI Components** - ridge vents, cupolas, skylights, and metal roofing accessories
- Northwestern Ohio Foam Products** - MicroFoil
- Owens Corning Titanium** - Synthetic Roof Underlayment
- Palram Americas** - SUNSKY polycarbonate panels
- Paragon Computing Solutions** - Paradigm software products
- Petersen Aluminum** - metal wall & roofing panel systems
- Plyco Corporation** - ridge vents, insulation, cupolas, and metal roofing accessories
- Prassas Metal Products Inc.** - prepainted Galvalume coil
- Ramco Supply** - Super-Loc metal roofing panels
- Rare Manufacturing** - Slate metal shingles
- Raytec Manufacturing** - hidden gutter hangers
- Rocky Mountain Snow Guards** - Blizzard III+ snow retention system
- Roll Former Corporation** - panel perforators & roll-forming machines
- Roof Hugger** - retrofit sub-purlins
- Royal Crowne** - Cupolas
- Rustgo** - Mobile Work Platform
- S-5!** - snow guard solutions & solar attachments
- SFS** - snap-lock panel clips
- Sheffield Metals** - 2.0" Mechanical Seam metal roofing panels
- Sherwin-Williams** - coil coatings & sealants
- Snap-Z** - standing seam ridge roof vent
- ST Fastening Systems** - fasteners, ridge vents, & snow guards
- Swenson Shear** - SnapTable Pro
- TAMKO MetalWorks** - steel shingles
- Titebond** - WeatherMaster Metal Roof Sealant
- Triangle Fastener Corporation** - fasteners
- Underlayment Specialties Plus** - RoofTopGuard SA Ice & Water protector underlayment
- United Steel Supply** - Galvalume steel coils
- Varco Pruden** - SSR System
- Ventco** - ProfileVent

Please return this form by December 27, 2020

Send to:
Jessica Franchuk at jessica@shieldwallmedia.com

Or mail to:
Shield Wall Media • P. O. Box 255 • Iola, WI 54945

PRODUCT PROFILES

Your comprehensive source for products and services in the metal roofing industry

Shadow Gray roof from
A.B. Martin Roofing Supply.
Photography by Shad Eash,
ShadBoost.com



The following pages of this year's Metal Roofing Buyers' Guide feature products that metal roofing contractors need to make good roofs and buildings great.

Whether you're looking for a bet-

ter way to hold things together, light up an interior with natural light, add aesthetics with a custom roof color, or keep moisture out and heat in, you'll find a solution here.

Each listing includes product infor-

mation and a snapshot of the product, plus a website address, phone number, or email address where you can find additional information.

Categories are listed alphabetically in the table of contents below.

TABLE OF CONTENTS

32	Business Tools & Professional Resources
33	Coils and Coatings
33	Fasteners
36	Machines, Tools, & Equipment
38	Metal Roofing Panels
40	Retrofit and Recoatings

41	Sealants, Caulks, & Tapes
43	Snow, Ice, & Rain Handling & Management
45	Translucent Panels and Skylights
47	Underlayments
48	Ventilation, Insulation, & Moisture Control
51	Miscellaneous Building Products



AppliCad USA Inc.

AppliCad has developed software for simplified roof modeling in 3D that results in comprehensive cladding material and labor take-off, client proposals, and job planning. The software creates complete material lists, cutting lists, workshop details, supplier orders, and a labor summary at the click of a mouse button. With 25+ years experience and software in 148 countries, AppliCad knows how to do estimates for metal roofing and wall cladding, including all associated trim and accessory items.

www.applicad.com



Construction Programs & Results, Inc.

Since 1999, Michael Stone's books, articles, and training have helped thousands of contractors of all types build stronger, more profitable businesses. Stone is the author of the best-selling books *Markup and Profit*; *A Contractor's Guide Revisited* and *Profitable Sales, A Contractor's Guide*, and has more than five decades of experience in the building and remodeling industry.

www.markupandprofit.com



Metal Roofing Alliance

Representing the residential metal roofing industry in the United States and Canada, the Metal Roofing Alliance (MRA) was formed to help educate consumers about the many benefits of metal roofing. The main objective of the MRA is to increase awareness of the beauty, durability, and money-saving advantages of quality metal roofing among homeowners, as well as to provide support to the residential metal roofing industry.

www.metalroofing.com



SmartBuild Systems

SmartBuild is a software system that empowers users to create custom designs for post-frame structures. SmartBuild uses cutting-edge technology to deliver complete 3D interactive input in a user-friendly web-based environment. Users are guided through a simple, menu-driven set of prompts to design any custom building. SmartBuild automatically creates framing, sheathing and trim cut lists, material lists, pricing, and drawings to make ordering materials streamlined.

www.smartbuildsystems.com

EMAIL YOUR INFORMATION TO OUR READERS

- **REACH:**
Rural Builder, Frame Building News, Garage, Shed & Carport Builder, Metal Roofing Magazine, Rollforming Magazine and Roofing Elements Magazine readers
- **TIMING:**
Send when you want to coordinate with product releases, special events or trade shows
- **RESPONSE:**
Prospects can click on the ad and respond to you immediately
- **ACCOUNTABILITY:**
You get a report showing how many readers received, opened and clicked on your DEBs



MENTION THIS AD & YOUR SECOND DEB IS HALF PRICE

CONTACT: Gary Reichert • gary@shieldwallmedia.com • 715.252.6360

COILS & COATINGS

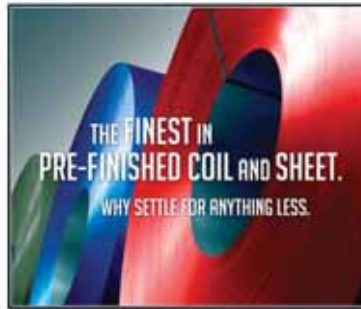
SUPPLIES & SOLUTIONS



AkzoNobel

AkzoNobel is a leading global paints and coatings company. We supply industries and consumers worldwide with innovative products and are passionate about developing sustainable answers for our customers. Our coil coatings provide beautiful topcoats, durable surfaces, innovative applications, Green benefits, and cost savings as to other substrates and coating options.

www.akzonobel.com/ccna



Coated Metals Group

Coated Metals Group (CMG) is a leading manufacturer of pre-finished steel products for the construction industry. CMG manufactures the highest quality architectural building products available at extremely competitive prices. Whether it is slit coil, flat sheets, pre-formed panel systems, or rainware, CMG products are manufactured efficiently and to exacting standards our customers have come to expect. As a leading supplier of pre-finished steel, our focus is customer service.

www.cmgmetals.com



Metal Alliance

Metal Alliance is a premier supplier of prime grade metal coil and flats for the architectural metal product industry. Our deep relationships with mills around the world and logistical know-how allow us to deliver superior metals on budget and on time, regardless of order size. Offering Galvalume®, aluminum, and copper, over 50 in-stock colors, and warranties up to 50 years, we're the metal partner you can count on. Metal Alliance is also the exclusive provider of DuPont™ Tedlar® PVF Film for metal roof and wall panels. Contact us today at 844.638.2548.

Tedlar® is a registered trademark of affiliates of DuPont de Nemours, Inc. and is used under license by Titan Steel Corporation and its affiliates.

www.metalliance.com



United Steel Supply

United Steel Supply provides high quality flat rolled steel coils. We offer superior customer service, competitive pricing, and just-in-time delivery, allowing us to achieve the highest level of customer satisfaction. United Steel Supply offers Galvalume®, galvanized, and prepainted steel coils for metal roofing and siding applications to the agricultural, commercial, industrial, and residential markets.

unitedsteelsupply.com

FASTENERS

NAILS, SCREWS, CLIPS, & CLAMPS



Atlas Fasteners

AccuDRYve System Technology includes a screw gun and fastener that automatically stops driving the fastener when properly seated for a leak-proof seal. The fastener washer is engineered to deflect with proper force to disengage the clutch and stop driving the fastener. Dual-thread design prevents metal from the panel extruding up, cutting the washer, and ensuring that the metal panel is flush to the substrate before seating.

www.atlasfasteners.com



Metal Alliance

Metal Alliance is a premier supplier of prime grade metal coil and flats for the architectural metal product industry. Our deep relationships with mills around the world and logistical know-how allow us to deliver superior metals on budget and on time, regardless of order size. Offering Galvalume®, aluminum, and copper, over 50 in-stock colors, and warranties up to 50 years, we're the metal partner you can count on. Metal Alliance is also the exclusive provider of DuPont™ Tedlar® PVF Film for metal roof and wall panels. Contact us today at 844.638.2548.

Tedlar® is a registered trademark of affiliates of DuPont de Nemours, Inc. and is used under license by Titan Steel Corporation and its affiliates.

www.metalliance.com



United Steel Supply

United Steel Supply provides high quality flat rolled steel coils. We offer superior customer service, competitive pricing, and just-in-time delivery, allowing us to achieve the highest level of customer satisfaction. United Steel Supply offers Galvalume®, galvanized, and prepainted steel coils for metal roofing and siding applications to the agricultural, commercial, industrial, and residential markets.

unitedsteelsupply.com



BECK America

The SCRAIL® RoofLoc® system was developed to install metal roofing and façades quickly and efficiently. Two times faster than collated screws and eight times faster than bulk screws, this performance could only be achieved through the combination of the pneumatic Roofing Installation Tool and the patented SCRAIL® RoofLoc®. The tool design allows for excellent ergonomics and tool balance, which promotes better ease of use, even on the longest, toughest jobs.

www.beck-america.com

FASTENERS

NAILS, SCREWS, CLIPS, & CLAMPS



Day Glow Industrial Co. Ltd.

Day Glow Industrial has been a specialist maker of drilling and tapping screws since 1996. Located in Tai'Chung, Taiwan, Day Glow has several years of experience in metal building construction, and hence realizes the importance of screws. We focus on producing high-quality fasteners, from standard screws to customized screws.

www.dayglow.com.tw



Direct Metals Inc.

Direct Metals Inc. (DMI) is a fastener manufacturer and master distributor of a wide range of building fasteners engineered for the metal roofing and post-frame building markets. DMI has a full line of post-frame fasteners, panel clips, clip fasteners, pipe flashings, and ventilation, and a full line of metal roofing accessories.

www.directmetalsinc.com



Dynamic Fastener

Dynamic Fastener offers same-day shipping of screws, anchors, flashings, safety equipment, hand tools, power tools, and the Dyna-Guard Snow Retention System. Available in-house painting of screws and rivets, with one- or two-day lead time. The company's free 140-page, full-color tool and fastener hand guide provides engineering data and details in addition to product offerings.

www.dynamicfastener.com



East Coast Fasteners

East Coast Fasteners produces durable fasteners for all combinations of building materials. The Ply-Lo Extreme line of fasteners is designed for extreme environments. The Ply-Lo Driller is the latest innovative addition to the company's fastener line, designed to save contractors time and money. The patented Ply-Lo Driller features a design intended to be more forgiving than other fasteners. This means the tip is designed to reduce the likelihood of "walking" when fasteners are driven at a slight angle. Less walking means quicker and easier installation as well as a reduction in material damage and waste. East Coast has fasteners available in colors to match virtually any panel in lengths of 1", 1½", 2", 2½", and 3".

www.plyco.com



Golden Rule Fasteners

Golden Rule Fasteners stocks a wide variety of fasteners for residential metal roofing, metal buildings, agricultural buildings, storage sheds, and carports. Whether you need fasteners for roofing, siding, or trim, mill finish or color matched to your painted panels, #9, #10, #12, #14, or 5/16 diameter, we probably have what you are looking for. Our extensive inventory allows us to ship most orders the same day that they are received. Whether you are looking for a primary supplier or a good backup supplier for those hot orders, we are eager to assist you. Give us a call at 334.283.4030 or email us at grfast@centurytel.net.

334.283.4030



Leland Industries Inc.

Mini Drill Points (MDPs) are the solution when fastening panels into wood or lightweight steel. MDPs deliver clean-cut holes with no pig tailing, with industry leading pullout values. MDPs can drill up to 16 gauge and will not fracture Fiberglass or PVC panels. The High Hex Head provides stability during installation and our Flow Cone Washer will never leak. MDP's Low Profile Head is ideal for residential applications. MDPs can be powder coated to match the color and warranty of your panel.

www.lelandindustries.com



Logan Stampings

Logan Stampings and Building Products Development (BPD), Logansport, Indiana, are two of the most well-known names in the metal building and metal roofing market. Products include standing seam roof clips and accessories for a multitude of metal roof systems. While BPD is the ideal source for any contractor roll forming panels at a job site, Logan is the premier source for metal building and roofing manufacturers. Their inventory levels enable them to offer same-day shipping with most stock orders.

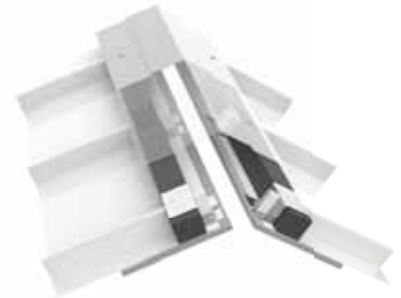
www.loganstampings.com



Maze Nails

Maze is the exclusive manufacturer of Stormguard double hot-dipped galvanized nails with a lifetime warranty against rust. Maze offers a full line of specialty nails in bulk for hand driving and in collated sticks and coils for popular pneumatic nailers. Maze also offers painted rubber washer nails for corrugated roofing and siding. Maze post-frame nails meet the all-important ASTM F 1667 specification. In addition, Maze manufactures nails for fiber cement siding products, cedar and redwood sidings, fencing, decking, and roofing.

www.mazenails.com



MWI Components

MWI Components' Universal Ridge Clip is a 22-gauge galvanized clip that provides a large fastening area for any style ridge cap on a standing seam roof. With this clip, no fasteners penetrate the panel where they will be exposed to the weather, and no fasteners need to penetrate the standing seam.

www.mwicomponents.com



S-5!

The S-5 NH 1.5 clamp is designed specifically for 1½" nail strip profiles with a wider horizontal-base dimension (≥ 0.475" and ≤ 0.800") and is ideal for mounting anything to VicWest Prestige, NewTech FF150, and similarly-dimensioned roof profiles. Featuring an innovative reversible "hinge" insert that forms to the shape of the seam to prevent damage, the NH 1.5 allows for a superior fit on nail strip profiles, while offering optimal holding strength. Learn more on our website.

www.s-5.com



ST Fastening Systems

WoodBinder® fastening systems advance the thermal qualities, moisture control, and structural integrity of the building envelope, increasing the life cycle and value of metal buildings. ST's Dual Solution Engineering is designed to match your roofing systems with both Kwikseal® MB professional and ZXL™ long-life (40-year warranty) solutions. The long-life ZXL is the only molded ZAMAC head with an encapsulated EPDM sealing system featuring a multi-layer barrier coating. The DurasealPlus® clear and the Powderful™ powder coatings deliver three times the UV/Rust protection of wet paint. The WoodBinder #12 T-17, the OSB Screw added to the system last year to address the need for greater strip-out strength in OSB board, is also available in both a professional and long-life ZXL version.

www.stfasteningsystems.com



Triangle Fastener Corp.

PANEL-TITE® BURR-BUSTER: Engineered to reduce burrs and provide more resistance to back-out! The BURR-BUSTER® point is specifically designed to extrude the metal as it penetrates, minimizing burrs. These fasteners have low-angle threads that help keep the screw from loosening. All fasteners can be painted with our Kalida-Kote paint finish to your exact color match.

www.trianglefastener.com

MACHINES, TOOLS, & EQUIPMENT

ROLL FORMERS, GUTTER MACHINES, & JOB SITE SOLUTIONS



Acu-Form Equipment

Acu-Form is a manufacturer of metal forming equipment such as the Ag Panel, Post Cut Shear, Uncoiler, Corner, J-Channel, Ridge Cap, Rat Guard, Hemmer, Slitter, Wrapper, etc. We also make machines to your specs. Our goal is to meet and exceed our customers' expectations. Our number one priority is to send our customer a durable, top-performing machine that will give you years of trouble-free service.

www.acuformequipment.com



AMS Controls

AMS Controls develops advanced hardware and software technologies that increase profitability and productivity for the metal forming industry. AMS Controls' customers include some of the largest metal processing operations, including those producing metal buildings, metal roofing, light-gauge framing, fenestration, custom roll-formed parts, HVAC ductwork, and more. With over 14,000 installations at more than 4,500 locations worldwide, AMS Controls sets the standard for operational efficiency in the metal form.

www.amsccontrols.com



ASC Machine Tools

The ASC Alpha Series® is a revolutionary panel roll-forming line featuring heavy duty cast stands with cast bearing blocks. The close-coupled pre-cut front end minimizes the equipment footprint to a total length of approximately 40'. The additional slitter pass and belt conveyor option allows the economic production of flat sheets and trim blanks—both exiting at a convenient height of approximately 30". The Alpha Series is also available as a post-cut line featuring a rugged hydraulic post-cut shear to produce panels down to 1' in length.

www.ascmt.com



The Bradbury Group

The Bradbury B.O.S.S.™ Series is a state-of-the-art roll former and closed-loop servo shear with speeds up to 300 FPM and an accuracy of 1/16". The B.O.S.S.™ can be close coupled to a new or existing roll former and is the leader in high production panel line roll forming.

www.bradburygroup.com



Hershey's Metal Meister

Wouldn't you like to have the same kind of quality and service that you strive to deliver to your customers? Variobend USA is the answer to your quest for speed, accuracy, and service in a trim folder. With European design coupled with American manufacturing and service, Variobend USA folders are built with you in mind. Look no further! Contact Hershey's today to experience it for yourself! Need more proof? We are happy to let you talk with Variobend USA owners. Email or call 877.289.3030.

info@hersheysmm.com



Malco Products SBC

Malco Tools TurboShear for Corrugated Metal: Cut corrugated mild steel with ease! This versatile and portable TurboShear easily attaches to any drill to make easy cross cuts, fast lengthwise cuts, and even circular and square outlet cuts in large or small pattern corrugated metal roofing and most trapezoidal (box) pattern metal roofing panels. Visit our website for more information!

www.malcotools.com



Marion Manufacturing

Marion Manufacturing adds value to the metal by designing, fabricating, and installing custom manufacturing and production machinery. Marion specializes in metal-forming equipment such as roll formers, uncoilers, shears, stackers, etc. Marion Manufacturing also offers a full-service machine shop and re-tooling and service on other brands of equipment.

www.marionmanufacturing.com



Metal Rollforming Systems

Metal Rollforming Systems (MRS) designs and manufactures industry-leading roll-forming equipment and accessories. MRS' product lines consist of single- and double-deck roll formers, single- and multi-trim roll formers, slitters, and more. MRS takes great pride in customer support both before and after the sale.

www.mrsrollform.com



New Tech Machinery

The revolutionary SSQ II MultiPro Roof Panel Machine is the latest iteration of the best-selling, most advanced, accurate, multi-profile machine. It can produce 15 different roofing or wall panel profiles and features optional notching and angle cutting capabilities. With this user-friendly machine, one person can change tooling in 45 minutes or less.

www.newtechmachinery.com



Roll Former Corporation

Roll Former Corporation now offers two perf units: the Stand Alone Perf Unit with two sets of perf dies for up to 24"-wide flat stock, and the Ag Panel Perforator for ventilation needed on your 3/4" by 5-rib-wide ag panels. Complete with four sets of perf dies for this 38"-wide popular panel. It can also perforate "flat stock" so you can post process the rest of your ventilated trim products. 26- to 29-gauge ag panels or 24-gauge max flat stock. Call us today at 215.997.2511 or visit us online.

www.rollformercorp.com



Samco Machinery

Samco Machinery's high-efficiency roll-forming shake tile line produces tiles and shingles to the desired length. Parts are pre-stamped and embossed and then sheared to the desired length before being fed into the roll former to form the sides for the locking function. Key features include a fully programmable servo feeder for different lengths, a 600-ton hydraulic press to stamp the embossing and step features, and a powered launching conveyor to continuously move forward and align pre-cut parts with the roll former.

www.samco-machinery.com



SWI Machinery

Minimize waste and maximize efficiency with our Marxman Plus Automatic Slitter. With eight pairs of auto setting slitting blades, automatic part nesting, waste minimization software, and the capability to run up to 150FPM, the Marxman Plus is outfitted with all the features to take your production to the next level. It's also possible to connect an offline label printer to the Plus so that labels can be printed for manual application by the operator.

SWImachinery.com

METAL ROOFING PANELS

STANDING SEAM, EXPOSED FASTENER, & METAL SHINGLES



A.B. Martin Roofing Supply

Do you need an extraordinary look for that special project? Get Aged Metal rustic panels with a 40-year finish warranty. The dual-coat Kynar finish has been increasingly popular for exterior and interior projects. Made to custom lengths in all types of panels—including the 1¼" and 2½" corrugated panels, ABM Panel, and 16½"-wide ABSeam Panel. Get inspiration at www.abmartin.net/aged-metal. Order today!

www.abmartin.net



ABC Supply Company, Inc.

ABC Supply Company, Inc. is the largest wholesale distributor of roofing in the United States and one of the nation's largest wholesale distributors of select exterior and interior building products. The company carries a broad portfolio of steep- and low-slope roofing materials, insulation, and accessories. This includes products such as asphalt, concrete, clay, slate, and composite roof shingles; cedar shakes; metal roofing; single ply, built-up, and modified bitumen roofing, and more.

www.abcsupply.com



CertainTeed

Matterhorn® Metal Roofing by CertainTeed offers the classic looks of shake, slate, and barrel tile in a durable, lightweight form with superior wind, fire, and impact resistance. Engineered from deep-drawn steel, Matterhorn comes in a variety of rich colors, including solar-reflective "cool roof" colors capable of lowering rooftop temperatures. Matterhorn roofs boast a 50+ year life expectancy, combining convenience and natural beauty into a worry-free solution for residential and light-commercial applications.

www.certainteed.com



EDCO Products

EDCO Products metal exterior building products are the most durable materials available. They can withstand the most extreme weather conditions—hail, wind, snow, and ice—while maintaining their original look for years to come. Our products, including metal roofing, siding, soffit, fascia, and trim, consistently outperform many other materials available today. We back up this performance with the industry's only true lifetime, non-prorated warranty that includes material and labor, in addition to hail and fade protection.

www.edcoproducts.com



Everlast Metals

A leader in the high-performing metal architectural roof and wall systems, Everlast Metals builds on a foundation of uncompromising product quality. Servicing the New England, Mid-Atlantic, and Midwest markets, Everlast Metals offers an extensive color selection of 24- and 26-gauge steel and .032 and .040 aluminum while maintaining its industry-leading structural and performance testing and commitment to continuous improvement.

www.everlastmetals.com



Everlast Roofing, Inc.

The next generation of metal roofing and siding begins with Everlast Roofing's commitment and loyalty to provide the industry with quality products that can withstand even the harshest environments. Everlast's panels are created with AZM® technology and the best paint system on the market combined with our exclusive Heat Forming™ and CECI®. Offering products to the agricultural, commercial, architectural, and residential markets, Everlast Roofing looks forward to partnering with you on your next build.

www.everlastroofing.com



Fabral

For more than 50 years, Fabral has been providing contractors and builders with top-quality building products. Fabral recently introduced new colors, textures, and designs to its portfolio. With an expanded portfolio and dedicated customer service values, Fabral is bound to become your provider of choice.

www.fabral.com



Graber Post Buildings, Inc.

Graber Post Buildings is excited to announce the release of the Board & Batten siding panel. It provides the classic look of wooden board and batten with the strength and longevity of a steel siding system. We offer this in all 28 color options in 26 gauge. Call us today for pricing on your next project!

www.graberpost.com



Hixwood Metal Inc.

No matter what the size of your next project, Hixwood has your back. We run the largest, most efficient machines in the industry. Whether you need roof panel, wall panel, or trim, we will get you what you need—fast. Whether you are looking for custom metal on a commercial, industrial, recreation, or agriculture building, we will trim for any application and any size. No one does metal like Hixwood. We stock more, bend faster, and cut closer.

www.hixwoodmetalinc.com



McElroy Metal

Build with the Best. As an industry leading manufacturer of metal roofing, metal siding, and substructural components, McElroy's products are specified and installed on projects ranging from single family homes to multimillion dollar commercial projects. McElroy Metal's extensive product line paired with our contractor network makes us the ideal choice for any project.

www.mcelroymetal.com



Metal Panels Inc.

Metal Panels Inc. (MPI) offers over 19 profiles of quality metal roof and wall panels, all available in durable finishes and energy-saving cool colors. Builders can expect one of the quickest turnaround times in the industry, with project managers on hand to help with custom orders. Exposed and hidden fastener panels, custom trim, accessories, and flat sheets are available from our locations. MPI services a Midwest, seven-state region through our manufacturing centers in Oklahoma and Kansas.

www.metalpanelsinc.com



Petersen | PAC-CLAD

Petersen's Snap-Clad metal roof system features architectural aesthetics and structural performance. Snap-Clad panels offer a 1 3/4" leg height and a continuous interlock for improved wind resistance. A concealed-fastener clip system allows for thermal expansion/contraction while providing extraordinary hold-down strength. Snap-Clad panels come in 46 standard colors with a 30-year non-prorated finish warranty. Most colors meet LEED®, ENERGY STAR®, and cool roof certification.

www.pac-clad.com

RETROFIT & RECOATINGS

SUPPLIES & SOLUTIONS



Ames Research Laboratories, Inc.

Blue Max® liquid rubber sealant is a versatile, highly adhesive elastomeric waterproof coating for use on wood, metal, concrete, vinyl, rubber, and cinder blocks. Use as a primer in roof coating projects for years of protection and longevity. With 1200% elongation, Blue Max® resists cracking and peeling, remains flexible in extreme temperatures, is eco-friendly, ultra-low VOC, non-toxic, water-based, and made in the USA.

www.amesresearch.com



Dynamic Fastener

Drop-Stop® sealer was designed for application to metal roofs and problem areas such as gutters and expansion joints. Drop-Stop® can easily be applied over sloped, contoured surfaces and will give long-lasting, colorful protection. Made from select synthetic rubbers, Drop-Stop® is applied as effortlessly as heavy-bodied paints and stretches and recovers to bridge roof joints in which thermal movement can be expected. With a 1,500 PSI tensile strength and 600% elongation capabilities, the product can single-handedly tackle most metal repairs.

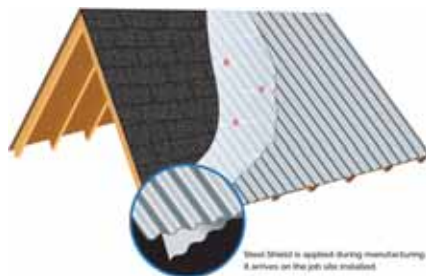
www.dynamicfastener.com



EPDM Coatings

Don't reroof, recoat and save thousands. Only contractor-grade products as low as 80 cents a square foot. Also the only liquid EPDM rubber in the world. Over a 26-year history of success. For a sales packet and pricing, call 610.298.1989 or visit us online.

www.epdmcoatings.com



Filc USA LLC

Steel Shield is specifically designed for the installation of steel panels directly over asphalt shingled roofs. The exceptionally durable membrane protects the underside of the steel roofing panels against abrasion due to temperature change expansion. Steel Shield saves the time and money typically spent when applying an additional vapor barrier, while eliminating the need for furring strips. Steel Shield can also reduce the need for walking boards since it is factory applied during the panel production process and shows up installed on the panels. From the makers of DripStop.

www.dripstop.com



Nationwide Protective Coating Mfrs., Inc.

The PERMAGARD® Roof Coating System is a waterproofing acrylic, insulating ceramic protective Elastomeric Roof Coating System. PERMAGARD® is an Energy Star-certified coating providing many benefits to a property owner, including the ability to refinish and restore even completely covered rusted roofs with a coating, eliminating the need to reroof and the cost and mess associated with it. PERMAGARD® will stand up to the harshest conditions and provide cost-effective solutions for years to come, make PERMAGARD® the go-to waterproofing coating for new or old metal roofs!

www.roofcoatings.net



Roof Hugger

Roof Huggers are 10' long, tested, high-strength, structurally correct, 16-gauge, 0.060" min., G-90, 50 KSI, "Z" shaped sub-purlins, specifically notched to let the ribs of any existing metal panel pass through the vertical leg of the "Z." This unique retrofit system allows any new metal roof to be installed over an existing metal roof without its removal, saving time and money, and allowing for thermal upgrading of the existing building.

www.roofhugger.com

SEALANTS, CAULKS, & TAPES

SUPPLIES & SOLUTIONS



Albion Engineering Company

Quickly seal exposed fasteners on metal roofs with the Spot-Pro Extension Nozzle (1032-G02). Applies a consistent dab of sealant to each screw head without bending over. The Spot-Pro nozzle has an integrated spring-loaded check-valve and will not drip or dispense sealant until it is activated by pressing against the screw head. For greatest versatility, use with Albion combo gun B12B30HJ (dispenses 30oz. Bulk, 20oz. Sausage, or 10oz. Cartridge).

www.albioneng.com



Golden Rule Fasteners

Golden Rule Fasteners stocks butyl tape in 3/8" wide, 3/4" wide, 1" wide, and 2" wide; EPDM and silicone pipe flashings; Durasil translucent silicone sealant; foam closure strips; and Hip & Valley expanding foam tape to help your customers make sure the weather stays on the outside of their buildings. Most orders ship the same day. Give us a call at 334.283.4030 or email us at grfast@centurytel.net.

334.283.4030



GSSI Sealants Inc.

GSSI manufactures premier elastomeric butyl rubber sealant tapes. We have been producing tapes for a wide range of industries and applications for more than 30 years. Our MB-10A is a premier elastomeric butyl rubber sealant designed to meet the critical requirements of metal building applications.

www.gssisealants.com



Marco Industries

Marco's Weather-Tite™ Metal Roof Sealant stands up to the elements better than all other sealant technologies. Our eco-friendly polymer sealant offers a waterproof seal against water, wind, dust, dirt, and other infiltrations. It adheres to almost any common building materials and comes in more than 30 standard colors. Marco's Weather-Tite™ Metal Roof Sealant is tack-free in one hour, is paintable (excluding translucent), and is ideal for use on a wide variety of products.

www.marcoindustries.com



Novagard Solutions, Inc.

NovaFlex Metal Roof Sealant, a neutral cure silicone sealant, has excellent adhesion to all types of metal, provides permanent flexibility, and does not shrink or crack. It is a low-odor material and cures to a medium modulus, flexible, and durable rubber-like solid. It can be used on metal roofs, panels, and gutters. It is used most frequently as a seam sealant or joint filler in metal roof systems.

www.novagard.com



Triangle Fastener Corp.

APS 500 Advanced Polymer Sealant is engineered to produce superior adhesion to metal, coated metals, wood, masonry, PVC, and most common construction materials. It is a class 50 sealant that provides exceptional movement capabilities compared to other class 25 sealants. It is UV-resistant, paintable, and provides long-life performance. It is formulated to install in temperatures as low as -32°F and can be made in more than 100 colors.

www.trianglefastener.com

17TH ANNUAL METAL OF HONOR AWARDS

Vote & Be Heard!

TAKE A MINUTE TO SUBMIT YOUR VOTE TODAY.



In April, *Metal Roofing Magazine* will present its **Metal of Honor Awards** for the 17th time. Help us determine the suppliers who do the best job of providing the services and products you need to successfully run your business.

CRITERIA TO CONSIDER WHEN MAKING YOUR CHOICES:

- Quality of customer service
- On-time delivery
- Within budget
- Product quality
- Warranty procedures
- No surprises

SELECT UP TO THREE SUPPLIERS:

1. _____
2. _____ [CLICK HERE TO VOTE ONLINE!](#) _____
3. _____

PREVIOUS WINNERS *(Choose from this list or nominate a new company)*

A.B. Martin Roofing Supply
ABC Supply Co.
AceClamp
AkzoNobel Coatings
Berridge Manufacturing
D.I. Roof Seamers
Drexel Metals
Dura Coat
Dynamic Fastener
East Coast Fasteners
EDCO Products
Englert
Everlast Metals
Fabral
Fall Protection Distributors

Isaiah Industries
Leland Industries
Logan Stampings
Malco Products
Maze Nails
MBCI
McElroy Metal
Metal Plus
Metal Sales Manufacturing Corp.
MFM Building Products
Morin
MWI Components
New Tech Machinery
Owens Corning

Petersen Aluminum/PAC-CLAD
PPG Industries
RapidMaterials
Roof Hugger
S-5!
Sheffield Metals
Sherwin-Williams Coil Coatings
Snap-Z
Sno Gem
ST Fastening Systems
Swenson Shear
Triangle Fastener Corp.
Ventco
Zimmerman Metals

Please return this form by December 31, 2020

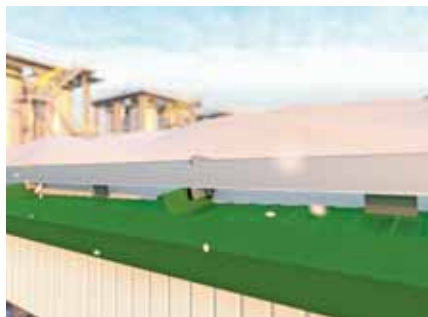
Send to:
Jessica Franchuk at jessica@shieldwallmedia.com

Or mail to:
Shield Wall Media • P. O. Box 255 • Iola, WI 54945

TO VOTE ONLINE:
constructionmagnet.com/metal-of-honor-voting

SNOW, ICE, & RAIN HANDLING & MANAGEMENT

SUPPLIES & SOLUTIONS



AceClamp®

The AceClamp® Snow Titan is AceClamp's strongest and easiest snap-together snow-retention system on the market. The cantilever "gripping claw" offers the latest in clamping mechanisms for easy installs with confident gripping power. The triangular rail handles extreme snow loads with confidence. The patented "sliding-pin" design AceClamps help protect the panel and warranty and come standard with any of our A2 style Snow Titan snow-retention systems.

www.aceclamp.com



Advanced Architectural Sheet Metal & Supply

ADVANCED Architectural continues to manufacture in-house and provides consistent, excellent customer service with their quality gutters, downspouts, elbows, and gutter accessories as well as brake metal to roofers and contractors nationally. Their team concept with dedication, quality control, and commitment goes above and beyond with every customer. ADVANCED has been serving the industry for over 25 years.

www.advarchsm.com



Dynamic Fastener

Dynamic Fastener's Dyna-Guard snow retention system is designed to be used on virtually any style metal roof. Dyna-Guard is an 8' long extruded aluminum rail with a T-shape profile. Dyna-Guard is installed by attaching non-ferrous clamps or mounts to a metal roof and bolting or screwing the system to clamps or mounts. Eight Dyna-Clamps with round-point stainless steel set screws and Sno-Dams are also offered. Sno-Dams attach to the back of Dyna-Guard and inhibit snow and ice from sliding underneath.

www.dynamicfastener.com



RapidMaterials

RapidMaterials offers a wide range of snow retention solutions, perfect for attaching to metal roofs. Our roofing attachments from S-5! can fit virtually any metal roof profile, and they are both durable and easy to install. The sudden and unexpected release of snow from the roof can be dramatic, posing a serious threat to property and passers-by. Homeowners can rest assured that a snow retention system from S-5! is a quality product, backed by industry testing and time-proven integrity.

www.rapidmaterials.com



S-5!®

Designed and engineered on a site-specific basis, ColorGard by S-5! is the trusted snow guard solution for any metal roof. ColorGard is manufactured with 100% non-corrosive metals and is simple and easy to install with surprising affordability. Extensively tested for load-to-failure results, ColorGard provides the safety and serviceability you need while complementing the look of your roof, with a clean appearance and perfect color and finish-matching, designed to last the life of the roof.

www.s-5.com



ST Fastening Systems

ST Fastening Systems offers Snow Trax snow retention guards for exposed fastener roofs and the MRC Snow Trax roof clamp for standing seam roofs. The Snow Trax is 16-gauge 304 stainless steel available in more than 20 powder coated colors. Its adhered rubber gasket eliminates the need for additional sealant. The MRC is extruded aluminum, and a colored rail slides through the clamp grooves to provide maximum protection from snow and ice.

www.stfasteningsystems.com

LOOKING AHEAD...

METAL ROOFING MAGAZINE

From the publishers of *Rural Builder*, *Metal Roofing Magazine*, *Frame Building News*, *Rollforming Magazine*, *Garage, Shed & Carport Builder* and *Roofing Elements Magazine*.

The only publication exclusively for metal roofers in the construction industry.

SUBSCRIBE FOR FREE!

ISSUES:

FEBRUARY / MARCH 2021

- State of the Industry
- **Advertising Deadline:** January 18, 2021

APRIL 2021

- Metal of Honor Awards
- **Advertising Deadline:** March 2, 2021

MAY (IDEA BOOK) 2021

- The Idea Book - Featured Projects
- **Advertising Deadline:** April 5, 2021

JUNE / JULY 2021

- Summer Trade Shows (Western Roof & Florida)
- **Advertising Deadline:** May 3, 2021

AUGUST / SEPTEMBER 2021

- Fall prevention and safety during installation
- **Advertising Deadline:** July 5, 2021



SUBSCRIBE: www.constructionmagnet.com/subscribe or see the subscription card in this issue

ADVERTISING: Gary Reichert, gary@shieldwallmedia.com • 715-252-6360

EDITORIAL: Jessica Franchuk, jessica@shieldwallmedia.com • 920-224-5146

TRANSLUCENT PANELS & SKYLIGHTS

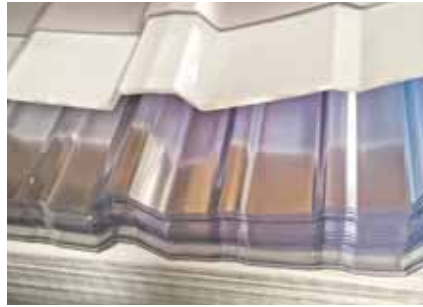
SUPPLIES & SOLUTIONS



ABC Supply Company, Inc.

ABC Supply Co. Inc. is the largest wholesale distributor of roofing in the United States and one of the nation's largest wholesale distributors of select exterior and interior building products. The company carries the top brands and latest products in replacement and new construction windows, skylights, and glass doors. Since 1982, ABC Supply's sole focus has been serving professional contractors.

www.abcsupply.com



Direct Metals Inc.

Direct Metals Inc. (DMI) distributors have the flexibility to offer many choices in daylighting options including profiled and flat monolithic translucent panels. Profiled panels are available in different strength ratings and thicknesses: 1.0mm, 1.5mm, and 2.0mm. Custom panel profile-matching technology is available to your customers, where DMI can create a custom translucent panel using your CAD drawing (minimum orders apply). All panels are co-extruded with UV protection and offer a 10-year warranty against loss of light transmission due to yellowing and against hail damage.

www.directmetalsinc.com



MWI Components

Natural light can't be understated. When it comes to natural daylight, MWI's Polycarbonate Skylight is perfect for roofs or vertical sidelights. Naturally lit buildings create pleasant, improved environments for livestock. Plus, they have significantly lower running costs with higher energy efficiency than buildings relying on artificial light. Discover a multitude of profiles in a variety of lengths and colors (Clear, Opal, Soft White, and Solar Gray). MWI's Polycarbonate Skylight: practical, cost-efficient, ideal for your next project.

www.mwicomponents.com



Palram Americas

Palram continues to expand its SUNSKY Polycarbonate Panel line, allowing builders to offer more daylighting and side lighting options to their customers. With Palram's proprietary MetalMatch Technology, Palram can match virtually any corrugated metal panel profile available, with minimal order requirements. Palram also offers a complete line of AG-TUF and DURACLAD PVC liner panels for interior use.

www.palram.com/us



Shed Windows and More, Inc.

Shed Windows and More specializes in windows, skylights, and decorative windows that are the specific sizes needed for outdoor buildings such as sheds, playhouses, and chicken coops. We also offer windows, garage door windows, and decorative windows that are sized for home installation. Our doors are of the highest quality, backed with 5-star customer service, excellent Google reviews, and quick shipping.

www.shedwindowsandmore.com



TUFTEX/Onduline North America

Available direct from the manufacturer, TUFTEX brand polycarbonate and PVC panels offer a variety of solutions for your garage, shed, carport, or other home projects. TUFTEX is made in the USA by Onduline North America. Polycarbonate panels are backed by a 10-year warranty. All panels are lightweight, easy to install, and also available in 9" OC Ag Panel and 12" OC R Panel profiles (38" wide, 36" of coverage, and lengths from 2½' to 24'). Distribution opportunities available. Contact our US-based customer service team for more information.

us.onduline.com/pro

INTRODUCING THE PREMIER ISSUE OF



The only publication dedicated to the effects of weather and climate on roofing.

Roofing Elements Magazine will deal with the physical environment and how “Elements” like heat, moisture, wind, and sun affect roofing. The Elements need to be considered in every aspect from material choice and design to installation techniques. *Roofing Elements Magazine* will provide both industry white papers and institutional knowledge from the experts who learned their trade in the real world.



**MAILING
FEBRUARY
2021**

Editorial in This Premier Issue:

- Temperature effects on fasteners; expansion/contraction of screws and nails
- Roofing installs during cold weather, when replacement can't wait
 - Safety; material handling/storage,
 - Effects of ice/cold on roof anchoring systems; temperature effects on components
- Moisture effects on adhesives and sealants; applying/curing when wet
- Insulation considerations for extreme temperature environments
- Snow and ice management for metal roofs



3 WAYS TO SUBSCRIBE!



- Scan Code
- www.constructionmagnet.com/subscribe
- Fill out & mail blow-in subscription card in this issue.

ADVERTISING: Gary Reichert, gary@shieldwallmedia.com • 715-252-6360

EDITORIAL: Jessica Franchuk, jessica@shieldwallmedia.com • 920-224-5146

UNDERLAYMENTS

SUPPLIES & SOLUTIONS



Carlisle WIP Products

WIP 300HT roofing underlayment from Carlisle WIP Products offers some of the best physical properties in the industry. With unparalleled performance at temperatures up to 250°F, WIP 300HT is the ideal choice for use under metal roofs and in high-temperature applications. To learn more about Carlisle's full line of underlayments, visit the website.

www.carlislewip.com



CertainTeed

WinterGuard® Metal is a universal high-temperature underlayment suitable for metal, shingle, slate, or mechanically fastened tile roof applications. Its self-adhering design allows it to apply easily and stick well to most surfaces, while its split-release backing is designed for quick installation. Slip-resistant and pliable during application, WinterGuard Metal provides superior leak protection as well as traction for added contractor safety, saving the contractor time and hassle.

www.certainteed.com



Levi's Building Components

Contractor-friendly Roloshield™ is lightweight, stronger than felt, and faster to install. Polypropylene synthetic roofing underlayment covers more roof with less rolls. Lays flat, water-resistant, and superior drapability. Speedy installation with printed nailing pattern. Extended UV resistance for install on sunny days and a cooler working surface. Class A fire-rated and Code Approved. New lineup has an added slip-resistant layer for every product level. All four products have ICC and Miami-Dade approvals; new lineup ranges from economical to high-end with code-compliant quality from Plus to Extreme.

www.levisbuildingcomponents.com



MFM Building Products

Premium HT Wind & Water Seal™ is a self-adhering underlayment composed of a high-grade, reinforced polyester fabric laminated to a high-temperature rubberized asphalt adhesive. It is engineered for whole roof coverage under tile and metal roofing systems where extreme heat is generated. The membrane is self-sealing around fasteners and has a slip-resistant surface. The 60 mil underlayment comes in a 36' x 67' roll size, has 180-day UV exposure rating, and a 30-year warranty. Premium HT meets ASTM D1970, Florida Building Code 11842, and is Miami-Dade County approved. More information online.

www.mfmbp.com



RoofTopGuard SA

RoofTopGuard SA Ice & Water protector is our premium, self-adhering, synthetic-based, high-temperature roofing underlayment. Its 59" width gives the contractor quicker coverage. Can be installed in temperatures as low as 15°F. The 5" selvedge edge is ideal for valleys. RoofTopGuard SA Ice & Water protector can be used under all roof claddings, weighing only 56 lbs.

www.uspunderlayment.com



Titanium Synthetic Roof Underlayment

Titanium Synthetic Underlayment: the premium choice for protection that lasts. Contractors trust Titanium Synthetic Underlayment for roofing projects that demand performance. Sure-Foot Technology creates a safer nodular walking surface that resists tearing and keeps working to help prevent moisture damage and cracking under tough conditions. Choose one of the most preferred premium synthetic underlayment brands—and the ideal choice for asphalt and metal roofing systems. Discover all the benefits of premium synthetic underlayment.

www.choosetitanium.com

VENTILATION, INSULATION, & MOISTURE CON

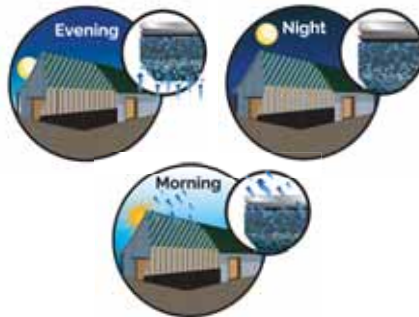
VAPOR BARRIERS, RIDGE VENTS, REFLECTIVE INSULATION, & MORE



Direct Metals Inc.

The HYPERVENT Vented foam strip is designed for use in ridge cap applications where ventilation is important. Treated with heat and UV-resistant coating, the universal nature of the product allows quick installation to the ridge cap or direct to the metal roof panel. The full width adhesive helps to provide a secure installation even in cold weather climates.

www.directmetalsinc.com



DripStop (Filc USA)

DripStop, from Filc USA, helps fight condensation without insulation. Specially designed air pockets store condensation and hold it until conditions change and it evaporates back into humidity. DripStop arrives at the job site already on the steel, saving time and money by removing one step of the building process. It eliminates the need for insulation while also helping fight corrosion by adding another layer of protection from the corrosive elements found in livestock confinement.

www.dripstop.com



Golden Rule Fasteners

Golden Rule Fasteners stocks profile-specific 25' rolls and 3' sticks of ridge vent for metal roofs as well as 20' rolls of non-profile-specific ridge vent. Let us help you source your ridge vent, screws, rivets, butyl tape, silicone sealant, pipe flashings, and more all in one place, where most orders ship same day. Give us a call at 334.283.4030 or email us at grfast@centurytel.net.

334.283.4030



Kennedy Insulation Group

Versola Insulation is manufactured with the highest quality raw materials available. Preventative components to safeguard against deterioration and degradation are added at levels higher than industry standards. Our state-of-the-art bubble lamination machine produces seamless rolls up to 6' in width. Reflective insulation is *all* we do! Made in the USA.

www.kennedyinsulationgroup.com



Marco Industries

As North America's leading ventilation manufacturer, Marco Industries offers superior roof ventilation your way, with products tailored to fit specific performance requirements and budgets. Our ventilation products feature an exclusive nonwoven polyester material that delivers extreme durability and breathes to help prevent moisture absorption. All ventilation products offer a 40-year limited warranty, easy one-person installations, and two full beads of M63, Marco's proprietary adhesive, for superior hold.

www.marcoindustries.com



MFM Building Products

WindowWrap® PSX-20 is a patented, self-adhering 25 mil waterproofing flashing tape constructed of a tough, aluminized, multi-layer polymer film. It is coated with a specially formulated rubberized asphalt to stand up to UV exposure. WindowWrap® PSX-20 effectively stops water leaks around windows and doors while reducing outdoor noise and air infiltration. The aggressive adhesive securely bonds the window flange to the exterior wall, and the rubberized asphalt self-seals around nails and staples.

www.mfmbp.com



MWI Components

MWI offers a large color palette with over 100 colors for ridge vents to match most roll formers' metal panels. Additionally, MWI supplies Uni-Vent® II and Uni-Vent® III (to ventilate with a ridge cap) and manufactures two high and three low profiles of Ridg-Vents® for outstanding ventilation. To prevent rust stains and for ease of handling, the vents have no raw metal edges. MWI is also the industry's leading manufacturer of steel and aluminum soffit. Pre-cut or special cut lengths are available, and sizes range from 7" to 144".

www.mwicomponents.com



Plyco Corporation

Plyco manufactures and distributes a variety of ventilation products designed to meet most airflow requirements. The MVE-100 is a low profile unit, 10' in length with 12 square inches of free air space per lineal foot. The MW100-25 has a higher profile than the MVE and is open at the top. The ventilator has an internal diverter to direct rain off to the side and out onto the roof. The MW100-35 has the same design as the 25 series with increased free air space of 36 square inches per lineal foot. The FMW100-35 is of the same design as the 35 series but the diverter is made from translucent fiberglass to allow light into the building ridge while keeping the rain out.

www.plyco.com



ProfileVent

ProfileVent® is a single-layer ridge vent roll. It's a strong, durable, modified polyester, non-woven, non-wicking, fiber-based matting, designed specifically for metal roofs. ProfileVent is specifically cut to fit more than 50 standing seam and through-fastened metal roofing panels—more than any other ventilation system manufacturer. After 30 years and more than 1 million installations, the company is still waiting for its first callback. ProfileVent is Class A Fire-Rated, so it will not burn.

www.profilevent.com



rFoil/Covertch

rFOIL-2600 series is designed to control heat gain/loss in all types of post-frame buildings. It blocks 96% of radiant heat transfer; is guaranteed not to delaminate, crack, peel, or flake; and carries an unmatched 10-year guarantee on material and labor. rFoil contains UV inhibitors and anti-oxidants for long-term durability, is tested to ASTM G-155 for UV resistance and facing surface degradation, has better thermal value and condensation control than fiberglass insulation, and boasts a class 1/A Fire Rating and passes NFPA-286 full room burn test.

www.rfoil.com



Snap-Z

Most Standing Seam Ridge Vents are too complicated to install, wasting valuable time and energy. With Snap-Z, installing a ridge vent is easy, and you can relax knowing that it won't fail over the lifetime of the roof and will vent adequately, which in turn gives you satisfied customers and no callbacks. Always working to improve, Snap-Z has undergone rigorous testing by independent labs to ensure that their standing seam ridge vents will withstand the worst elements and maintain the beautiful hidden fastener look that everyone wants.

www.standingseamroofvent.com



ST Fastening Systems

ST Fastening Systems supplies its MultiVent, MultiVent10, and MultiVent20 closures for those applications requiring airflow on metal roofs. Open cell foam MultiVent, 3' in length, woven polyester MultiVent10, 10' in length, and MultiVent20, 20' in length, allow as much as 98% free airflow through the material. However, they prevent wind-driven rain from penetrating the material when compressed. The designs are universal for all three, with adhesive applied for easy field installation. MultiVent can be used on angled roof applications and MultiVent10 and MultiVent20 for ridge cap applications.

www.stfasteningsystems.com



PHOTO COURTESY OF STOUTZUS STRUCTURES

GARAGE • SHED • CARPORT
BUILDER
SHOW

CENTURY CENTER • SOUTH BEND, INDIANA
FEBRUARY 4-5, 2021

PRESENTED BY SHIELD WALL MEDIA,
 PARENT COMPANY OF GARAGE, SHED & CARPORT BUILDER MAGAZINE

SPONSORED BY:



FOR MORE INFORMATION CONTACT GARY REICHERT:
gary@shieldwallmedia.com • 715-252-6360

MISCELLANEOUS BUILDING PRODUCTS

SUPPLIES & SOLUTIONS



AG-CO

FootingPad brand isolated post footings has introduced a 20" diameter footing. With over 300,000 sold, FootingPad has reduced the labor cost in thousands of buildings. These composite footings are lightweight and easy to use, saving labor and equipment wear and tear. The new 20" FootingPad has a load capacity of over 6,500 pounds and joins a line of four other sizes, with the largest, 24", carrying loads over 9,300 pounds! See our website or call 800.522.2426.

www.footingpad.com



Extrutech Plastics, Inc.

The Extrutech Plastics "stay-in-place" concrete form for poured walls is pre-cut to project specifications and snaps together with a double-spline E-locking system. The Extrutech FORM offers an easy-to-clean sanitary surface on both sides. The product creates a structural wall system that is builder- and customer-friendly for use in dairies, car washes, or food facilities. Initially designed for 6" poured walls, it is also now available for 8" walls.

www.epiplastics.com



FlexScreen

FlexScreen is the world's first and only flexible window screen. No bulky aluminum frame to bend, dent, or break; no paint to color match, chip, or scratch; and no complicated, flimsy hardware. Our innovative, effortless, and sleek design installs and removes in seconds, hides inside the window's screen track for an uninterrupted view, and is durable enough to last a lifetime. FlexScreen is revolutionizing the window industry with our patented, simple, problem-solving design.

www.flexscreen.com

A WHOLE NEW EXPERIENCE!

METAL ROOFING 2021 ONLINE BUYERS' GUIDE



TAKE A LOOK FOR YOURSELF!

www.metalroofingmag.com

OR SIMPLY SCAN THE QR CODE

ON ANY AD WITH YOUR PHONE AND PICK AN OPTION TO CONNECT TO MANUFACTURERS.



Kevmar Garage Doors

Kevmar Door is a manufacturer of specialty garage doors. Our products are sold across the United States and Canada, with deliveries via company trucks in the Midwest. The Kevmar product line includes a high value line of pan-type stamped steel doors for the shed industry.

www.kevmarmfg.com



Safe-Way Garage Doors

Safe-Way Door is a leading manufacturer of quality residential, commercial, and industrial overhead garage doors in steel, wood, and aluminum. Headquartered in Warsaw, Indiana, Safe-Way Door also operates facilities in Tennessee and Missouri with distribution throughout North America and Canada. Residential and commercial doors are available in multiple configurations including polyurethane and polystyrene insulated, uninsulated, and up to 11 colors in steel, and multiple powder coat colors in aluminum.

www.safewaydoor.com

project of the

St. Patrick's Church, Galveston, Texas



ALL PHOTOS BY WWW.BUEWANISTARTOGRAPHY.COM

Aluminum Panels Protect Church From Future Hurricanes

Historic Texas church's metal roof was designed to face the area's stormy weather

For building owners in the island city of Galveston, Texas, good design isn't only about aesthetics—it's also about survivability. Their city was nearly wiped off the map in the devastating hurricane of 1900, so every renovation decision comes down to a balance of beauty and resilience. The new metal roof installed on the city's historic St. Patrick Church meets both criteria, helping to secure the structure's landmark status for

decades to come.

Members of this church are well aware of their island home's vulnerability. They lost their first sanctuary to storms in 1871, just a year after it was built. That wooden structure was replaced with a grand Gothic masonry church in 1877. However, that building was, in turn, destroyed when its massive spire—then the tallest in Texas—collapsed onto the sanctuary during the Great

Project Overview

Location: Galveston, Texas

Building: St. Patrick's Church

Roofing Contractor: Morgan Roofing, LLC

Roofing Panel: Petersen PAC-CLAD Snap-Clad
.040-gauge aluminum panels in Silver metallic finish

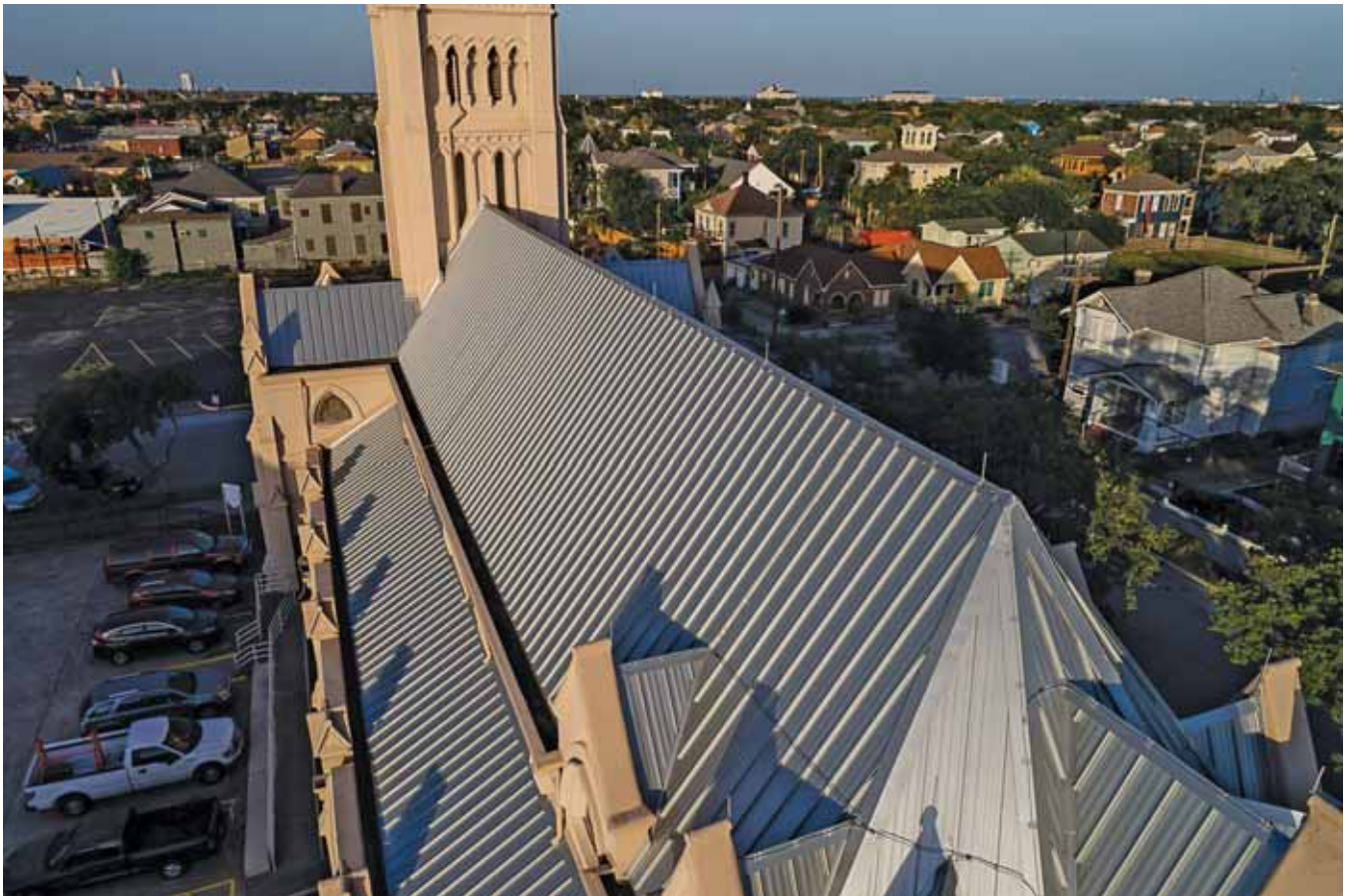
Hurricane of 1900. The current church was completed in 1902 to be every bit as grand (though with a shorter spire).

Just five years later, the parish decided to heed the City of Galveston's call to raise the elevation of all structures as part of a broad flood-prevention effort. A crew of 100 men turned manual screw jacks to lift the church by 5". This move saved the church from certain flooding during Hurricane Ike in 2008, according to Reverend John Bok, a parish priest.

"When they elevated this church, they saved it," he said in a Federal Emergency Management Agency (FEMA) case study on the hurricane. "Without their work, we would have had terrible damage inside our church, not only in Hurricane Ike, but in other storms, too."

So, given this stormy history, it's not surprising that, when it came to replacing the building's aging asphalt-shingle roof, church administrators were every bit as concerned about performance as looks. This is what led them to the local firm of Morgan Roofing, LLC, and Snap-Clad aluminum roofing panels from Petersen's PAC-CLAD lineup in a silver metallic finish. According to Morgan





Roofing's owner, David Morgan, installing the 9,000 square feet of .040-gauge panels was a labor-intensive process. "It was a particular kind of job. It was unusual in that we only do four or five jobs like this per year—it was a fairly complicated roof," he said. "When you work on historic buildings, the buildings tell a story. You'll uncover something and say, 'Well, yes, this needs to go here.'"

The building's gutter system offers one example of the complications installers faced. The box-style gutters are built into the parapet walls surrounding the roof, with downspouts connecting at varying intervals along the gutters' full length. "To re-create the existing piece, it took 47 breaks in one piece of metal," Morgan shared.

The roof's steep slope also required some creative thinking once panel installation began. This included designing some of their own equipment to improve both safety and efficiency. "We had to build 'chicken ladders' to hook over the ridge of the building," Morgan said, citing one such example. "That way, four guys could work on the panels at once."

One easy decision for the roofers, Morgan said, was the choice of PAC-CLAD aluminum panels for the job. Given the severe weather Galveston so frequently experiences, the warranty was important and, "When you're doing a 100-year roof, you want to do a good job." **MR**





Thank You

*to our advertisers
and subscribers for making
2020 another successful year.
We couldn't have done
it without you.*

*May 2021 bring you prosperity,
happiness and good health.*

INDEX OF ADVERTISERS

SCAN THESE ADVERTISERS' QR CODES TO GET IN TOUCH WITH THEM TODAY!

Company	Page #
AB Martin	8
Ace Clamp	22
Acu-Form	14
Advanced Architectural	11
ASC Machine Tools	CVR, 58
Atlas Fasteners	CVR
Aztec Washer Company	58
Bradbury Group, The	58
Direct Metals	58
Dr!pstop - FILC	60
Dynamic Fastener	IFC
East Coast Fasteners	21
Edco Products	CVR
Express Barns	59
Extrutech Plastics	58
Golden Rule Fasteners	58
Hawkeye Flat Roof Solutions	58
Hershey's Metal Meister	25
Hixwood Metal Inc.	13
Leland Industries Inc.	16, 59
Marion Manufacturing	56
Metal Alliance	CVR
Metal Rollforming Systems	8
MFM Building Products	10
MWI Components	14
Nationwide Protective Coatings	24
New Tech Machinery	59
Onduline	CVR, 6
Petersen Aluminum	7
Precision Metal Craft LLC	59
Rapid Materials	CVR
Raytec Manufacturing	13
rFoil Insulation Products - Covertch	23
Roll Former Corporation	11
Safeway Door	59
Smartbuild	CVR
SWI Machinery	CVR
Triangle Fastener	12
Union Corrugating Co	59
United Steel Supply	9, 58



MARION MANUFACTURING

- Automation Systems
- Metal Construction Rollformers
- Coil Processing
- Forming & Fabrication
- Recondition Existing Machines

WE ADD THE VALUE TO METAL

1-888-865-8740 www.marionmanufacturing.com

got news?

If you have news you think belongs in *Metal Roofing Magazine*, feel free to send us a press release (and high-resolution image if applicable) for consideration. This is a no-cost editorial opportunity for all metal roofing-related businesses.

Send us news of your:

- Milestone anniversary
- New product, material, or service
- New program for the advancement/betterment of the trade
- Outstanding achievement
- Business location change/expansion
- Accolades/awards
- Staff promotion/staff addition
- Public service work/engagement
- Trade association involvement
- Branding changes
- Sponsoring/exhibiting at a trade show
- Merger/acquisition
- Case studies
- Joint projects with an industry partner

Send us a notice of your successful completion of a challenging or unusual project and you may see it featured as a Project of the Month. We would also need 4-5 high-resolution images and details about the products used in the project.

Got questions? Call 920-224-5146 or email jessica@shieldwallmedia.com

News announcements and projects to be considered for Project of the Month placement can also be mailed to Metal Roofing, ATTN: Jessica Franchuk, PO Box 255, Iola, WI 54945.



GET MORE INFORMATION ABOUT PRODUCTS & SERVICES SEEN IN THIS ISSUE. HERE'S HOW:



If you are looking for more information from companies featured in this issue, fill out this form.

Mail the completed form to us, and we will have those companies get in touch with you. There's no need to fill out multiple forms; we'll do the legwork for you.

Name (please print) _____

Signature (required) _____

Company _____

Address _____

City _____ State _____ Zip _____

Telephone (_____) _____

E-mail _____ Date _____

Please check one or more boxes to subscribe FREE/Renew for 3 years:

Garage, Shed & Carport Builder Magazine *Frame Building News* *Metal Roofing Magazine*

Rural Builder *Rollforming Magazine* *Roofing Elements Magazine*

I would like to receive my subscription: By Mail Digitally

Check this box if you wish to receive our Builders' Express newsletter and offers from our partners.

Check this box if you wish to receive our Roofers' Express newsletter and offers from our partners.

Email address is required to receive newsletter.

CONTACT NAME & EMAIL (OR) NAME & PHONE NUMBER ARE REQUIRED.

WITHOUT THIS INFORMATION WE WILL NOT PROCESS THE REQUEST.

SELECT A MAXIMUM OF 5 COMPANIES TO REQUEST INFORMATION FROM:

Company Name: _____

Company Name: _____

Company Name: _____

Company Name: _____

Company Name: _____

I understand that by providing the above information I hereby consent to receive communication regarding my subscription via US Mail, telephone, and e-mail sent by *Metal Roofing Magazine*.

Valid until February 26, 2021 MR DEC 2020/JAN 2021

CHECK WHICH TITLE APPLIES TO YOU:

- President
- Owner
- Partner
- General Manager
- Sales Manager/Rep
- Engineer/Architect
- Vice President
- Foreman
- Installer
- Other _____

PLEASE CHECK THE PRIMARY CATEGORY THAT DESCRIBES YOUR BUSINESS:

- Builder, Dealer, Remodeler or Installer
- Roofing Contractor
- Metal Roofing Contractor
- Building Material Dealer/Distributor
- General Contractor/Remodeler
- Manufacturer/Rep of Manufacturer
- Architect/Specifier
- Construction Consultant/Engineer
- Building Owner/Developer
- Other (Please Specify) _____

ENGAGED IN THE FOLLOWING APPLICATIONS:

- Gutters/Accessories
- Institutional
- Residential
- Agricultural
- Commercial
- Industrial

BUSINESS CONNECTIONS

★★★★ PREMIUM QUALITY ★★★★★

ROLLFORMING MACHINERY

PANEL ROLLFORMER
TRIM ROLLFORMER
PURLIN ROLLFORMER
CUSTOM ROLLFORMER

ASC MACHINE TOOLS, INC.

MADE IN USA
SINCE 1949

DMI = BUILDING INVESTMENT PROTECTION

Let DMI complete your building project with Code Approved & Warrantied:

HW & PANCAKE FASTENERS • ANCHORS • PIPE FLASHINGS
REFLECTIVE INSULATION • POLYCARBONATE PANELS
SOLID & VENTED FOAM CLOSURES

www.directmetalsinc.com 855-800-8878

Wall and Ceiling Panels and FORMS

- Sanitary - Smooth - Bright White
- Easy to Clean - Non-Porous
- Perfect for Non - Food Contact Surfaces
- For Corrosive or High - Moisture Areas
- Quick Installation - Cut to the Inch Panels

View our New FORM Panel video on our website.

888-818-0118 • www.epiplastics.com • info@epiplastics.com

EPI EXTRUTECH PLASTICS, INC.

TAKE THE GUESSING OUT OF THE INSTALLATION.

Will the pipe flashing you have handle the correct pitch?

The NEW and IMPROVED Master Flash® Roof Pitch Data Calculator
From the largest to the smallest Pipe Boots Available

Master Flash® Roof Pitch Data Calculator

aztec washer company <https://rpc.aztecwasher.com>

THE BRADBURY GROUP

Your Single Source Equipment Provider

bradburygroup.com
 + 1.620.345.6394
bradbury@bradburygroup.com

UNITED STEEL SUPPLY

STEEL PRODUCTS FOR THE METAL ROOFING & METAL BUILDING INDUSTRY

Understanding Superior Service

512-263-0954 • unitedsteelsupply.com

Golden Rule FASTENERS

QUALITY PRODUCTS
COMPETITIVE PRICES
& MOST ORDERS SHIP THE SAME DAY

- Screws • Closures • Ridge Vent
- Pipe Flashings • Butyl Tape • And much more!

Ph: (334) 283-4030 - FAX (334) 283-4032

BUSINESS OPPORTUNITY!

ADD CONKLIN®

ROOFING SYSTEMS

to your business for additional income.
Call Enos Miller today to join our team of successful contractors.

855-527-2842

BUSINESS CONNECTIONS

LELAND Specialty Fasteners

Master Grippers® • Grippers MDP® Master Drillers®

Master Tappers® Master Deckers®

Our Powder Coated paint system allows us to match your painted steel supplier's warranty.

LELAND
INDUSTRIES, INC.

1.800.263.3393
www.inlandindustries.com

Made in the USA

NTM
New Tech Machinery
A MACELLA COMPANY

THE WORLD'S FINEST PORTABLE ROLLFORMING MACHINERY & EQUIPMENT

800.574.1717 newtechmachinery.com

f t in y

EXPRESS BARN'S
COMPLETE PACKAGE SOLUTIONS

Post Frame Packages Delivered to your Job Site

expressbarns.com • 785-214-4609
info@expressbarns.com

Let us prove to you that we can save you time and money. We want to be your Partner in Post Frame!

DYNA-CUT
Metal Panel Shears

HRB-36

Powered and Manual Shears to meet your metal cutting needs.

- Replaceable tool steel blades with the profile of your choice
- Simply change the blade set to switch from straight to angle cut
- Cuts a 3/12 - 5/12 angle
- Heavy duty toggle clamp holds panel to ensure a quality cut

Manufactured by:
Precision Metal Craft LLC
10075 E 72nd ST, Reed City, MI 49677
231-832-4222

SAFE-WAY
GARAGE DOORS
Make a Statement.

1958 **60** Years 2018

A Lifetime of Quality and Relationships

3814 E. US 30 Warsaw, IN. 46580 • (574) 267-2813

UNION
CORRUGATING COMPANY

Your Roof. For Life.™

Open up your camera app and hold it over the QR code for a direct link to our product offerings!

Call for a FREE Quote!
1-888-685-7663

Since 1946, Union Corrugating has been an industry leader in providing metal roofing products, supplies, and wall systems for residential, commercial and agricultural applications.

Construction Rollforming Show

Duke Energy Center Cincinnati, OH
June 3-4, 2021

FOR INFORMATION CONTACT GARY 715-252-6360

2021
GARAGE • SHED • CARPORT
BUILDER SHOW

CENTURY CENTER • SOUTH BEND, INDIANA
FEBRUARY 4-5

FOR INFORMATION CONTACT GARY 715-252-6360

Stop the Dripping from Condensation

From the Largest Ag Building to the Smallest Carport...



Keep Everything Under Your Roof Dry.

A Necessity for Any Metal Roofed Building That is Not Climate Controlled.

From livestock to equipment, you can trust DripStop to protect and keep the contents of your building dry.

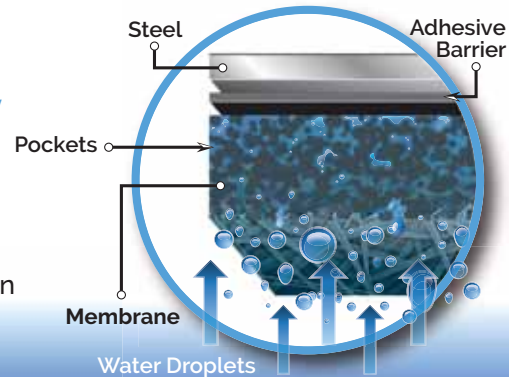
Areas of use:

- Post Frame/agricultural buildings
- Self-storage
- Carports, truck ports & RV storage
- Steel buildings
- Workshops/unattached garages
- Open-walled structures

Better Science Equals Drier Buildings

When condensation occurs, moisture gets stored in the specially designed pockets of the DripStop membrane.

- Helps fight corrosion
- Stops bird nesting
- Saves money
- Durable, rip & tear resistant
- Easy to clean
- Cuts down on time of construction



Ask for it from your preferred steel panel supplier

Visit our website at www.dripstop.com or call us at: 1-(937) 660-6646